

MANUFACTURED TERMINAL SECTION (FLARED)

STA. 15+38.96, 45.60 LT - STA. 15+75.33, 55.21 LT
 STA. 16+54.42, 43.93 LT - STA. 16+92.66, 33.90 LT

STEEL BEAM GUARDRAIL

STA. 16+92.66, 33.90 LT - STA. 20+72.70, 40.00 LT 437.5

REMOVAL AND DISPOSAL OF GUARDRAIL

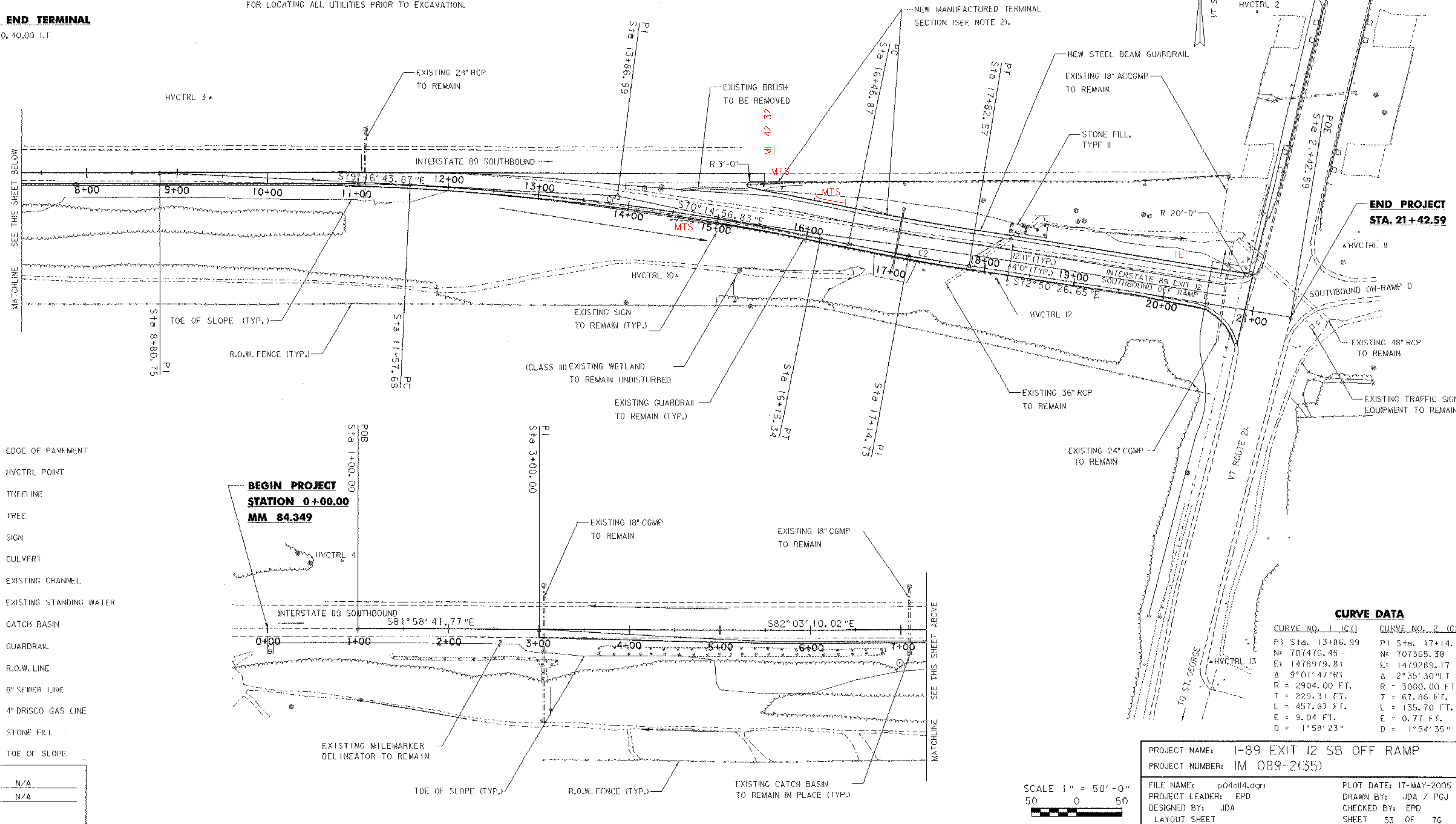
STA. 15+23.84, LT 42.74 - STA. 15+75.33, 55.21 LT 521

TRAILING END TERMINAL

STA. 20+72.70, 40.00 LT

NOTES

- STATIONS AND OFFSETS OF RELOCATED, REMOVED AND NEW SIGNS, IN ADDITION TO NEW PAVEMENT MARKINGS, ARE SHOWN ON THE SIGNS & PAVEMENT MARKINGS SHEET.
- GUARDRAIL TO BE PAID FOR UNDER ITEM 621.20, "STEEL BEAM GUARDRAIL". MANUFACTURED TERMINAL SECTION (M.T.S.) TO BE PAID FOR UNDER ITEM 621.505, "MANUFACTURED TERMINAL SECTION (FLARED)". SEE VTRANS STANDARD C-19 FOR M.T.S. DETAILS.
- THE CONTRACTOR SHALL CONTACT DIG-SAFE AND REQUEST MARKING OF ALL BURIED UTILITIES WITHIN THE PROJECT LIMITS PRIOR TO ANY EXCAVATION. LOCATION OF EXISTING UTILITIES SHOWN ARE APPROXIMATE AND MAY NOT SHOW ALL EXISTING UTILITIES. THE CONTRACTOR SHALL BE RESPONSIBLE FOR LOCATING ALL UTILITIES PRIOR TO EXCAVATION.
- NO UTILITIES ARE TO BE DISTURBED WITHOUT PRIOR WRITTEN CONSENT FROM THE UTILITY OWNER. ANY DAMAGE TO EXISTING UTILITIES AS A RESULT OF CONTRACTOR'S OPERATIONS SHALL BE REPAIRED TO THE SATISFACTION OF THE OWNER AT THE SOLE COST OF THE CONTRACTOR.
- THE CONTRACTOR SHALL CONTACT THE TOWN OF MILLISTON AND APPROPRIATE UTILITY COMPANIES RELATIVE TO UTILITIES, ARRANGE AND ATTEND A PRE-CONSTRUCTION MEETING TO DISCUSS UTILITIES.
- THE CONTRACTOR IS RESPONSIBLE FOR THE INITIAL AND CONTINUED COORDINATION WITH UTILITY OWNERS TO ENSURE THAT THE SCHEDULING OF UTILITY WORK RESULTS IN THE SMOOTH PROGRESSION OF THE PROJECT.



LEGEND

- EDGE OF PAVEMENT
- HVCTRL POINT
- TREE LINE
- TREE
- SIGN
- CULVERT
- EXISTING CHANNEL
- EXISTING STANDING WATER
- CATCH BASIN
- GUARDRAIL
- R.O.W. LINE
- 8\"/>

DATUM

VERTICAL: N/A
 HORIZONTAL: N/A

BEGIN PROJECT
 STATION 0+00.00
 MM 84.349

CURVE DATA

CURVE NO. 1 (C1)	CURVE NO. 2 (C2)
PI Sta. 13+86.99	PI Sta. 17+14.73
N: 707476.45	N: 707365.38
E: 1478919.81	E: 1479289.17
Δ: 9°01'47\"/>	

PROJECT NAME: I-89 EXIT 12 SB OFF RAMP
 PROJECT NUMBER: IM 089-2(35)

FILE NAME: p04all4.dgn
 PROJECT LEADER: EPD
 DESIGNED BY: JDA
 LAYOUT SHEET

PLOT DATE: 17-MAY-2005
 DRAWN BY: JDA / PCJ
 CHECKED BY: EPD
 SHEET 53 OF 76

