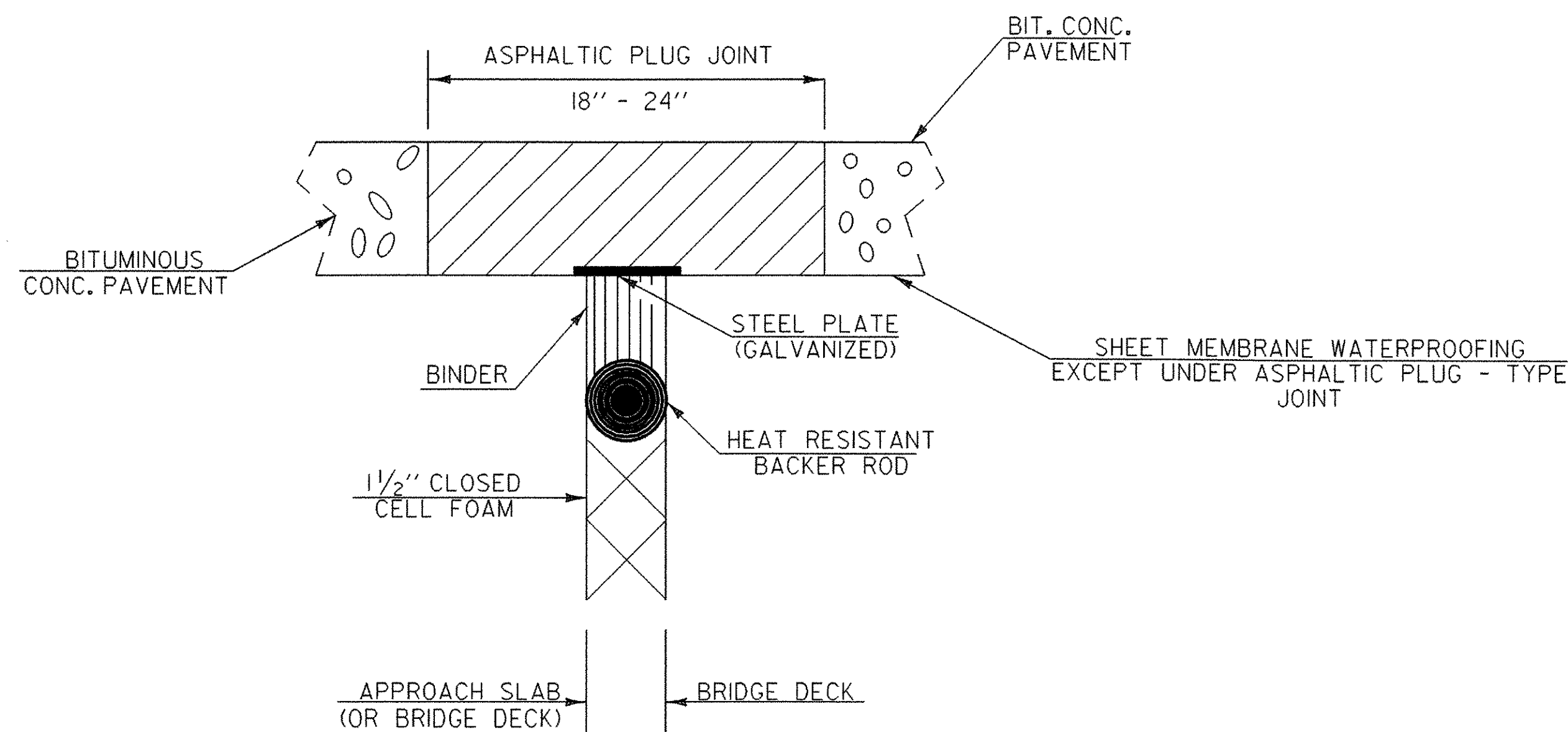


**ASPHALTIC PLUG - TYPE
JOINT DETAIL
REMOVAL OF UP TO
2" DETERIORATED CONCRETE**

NOTES:

- UPON ENCOUNTERING UP TO 2" AVERAGE OF DETERIORATED CONCRETE, THE CONTRACTOR SHALL REMOVE THE DETERIORATED MATERIAL AND REPLACE IT WITH THE ASPHALTIC PLUG JOINT MATERIAL AS DIRECTED BY THE RESIDENT ENGINEER.
- REMOVAL OF THE DETERIORATED CONCRETE WILL NOT BE PAID SEPARATELY BUT WILL BE CONSIDERED INCIDENTAL TO THE UNIT BID PRICE FOR THE ITEM 516.10. THE ADDITIONAL PLUG JOINT MATERIAL BELOW THE DESIGN DEPTH TO REPLACE THE DETERIORATED CONCRETE WILL BE CONSIDERED INCIDENTAL TO THE UNIT BID PRICE FOR THE ITEM 516.10.
- THE STEEL PLATE IN THE ASPHALTIC PLUG JOINT MAY BE OMITTED AS SHOWN IN THE DETAIL ABOVE IF DIRECTED BY THE RESIDENT ENGINEER.

* REFER TO SPECIAL PROVISIONS FOR BASIS OF PAYMENT



**ASPHALTIC PLUG - TYPE
JOINT DETAIL**

LOCATION

NOTE: REFER TO NOTE UNDER DETAIL AT TOP.

TOWN	BRIDGE	EXISTING CONDITION AS PER BRIDGE INVENTORY	TREATMENT	LENGTHS
RICHMOND M.M. 73.55 STA. 3883+42	BR. # 52S 3 SIMPLE SPAN	2 1/2' +/- OF EXISTING PAVEMENT WITH MEMBRANE ON BRIDGE	5 PLUG JOINTS REQUIRED COLD PLANE 1 1/4''	5 @ 38'
RICHMOND M.M. 74.00 STA. 3907+01	BR. # 53S 3 SIMPLE SPAN	2' +/- OF EXISTING PAVEMENT WITH MEMBRANE ON BRIDGE	6 PLUG JOINTS REQUIRED COLD PLANE 1 1/4''	6 @ 32'
RICHMOND M.M. 77.10 STA. 4070+00	BR. # 55S 3 SIMPLE SPAN	3' +/- OF EXISTING PAVEMENT WITH NO MEMBRANE ON BRIDGE	6 PLUG JOINTS REQUIRED COLD PLANE 1 1/4''	6 @ 32'
RICHMOND M.M. 78.41 STA. 4140+06	BR. # 56S 3 SIMPLE SPAN	3' +/- OF EXISTING PAVEMENT WITH NO MEMBRANE ON BRIDGE	6 PLUG JOINTS REQUIRED COLD PLANE 1 1/4''	6 @ 32'
RICHMOND M.M. 78.53 STA. 4146+64	BR. # 57S 4 SPAN BRIDGE	3' +/- OF EXISTING PAVEMENT WITH NO MEMBRANE ON BRIDGE	6 PLUG JOINTS REQUIRED COLD PLANE 1 1/4''	6 @ 42'
RICHMOND M.M. 78.75 STA. 4157+90	BR. # 58S 3 SPAN CONTINUOUS 2 FINGER PLATE JOINTS	3' +/- OF EXISTING PAVEMENT WITH NO MEMBRANE ON BRIDGE	2 PLUG JOINTS REQUIRED COLD PLANE 1 1/4'' UP TO AND BEYOND FINGER PLATE JOINTS	2 @ 30'
RICHMOND M.M. 78.98 STA. 4170+01	BR. # 59S 3 SIMPLE SPAN BEAM BRIDGE	3' +/- OF EXISTING PAVEMENT WITH MEMBRANE ON BRIDGE	3 PLUG JOINTS REQUIRED COLD PLANE 1 1/4''	5 @ 32'
WILLISTON M.M. 83.96 STA. 4432+98	BR. # 61S 3 SIMPLE SPAN BEAM BRIDGE	3' +/- OF EXISTING PAVEMENT WITH NO MEMBRANE ON BRIDGE	COLD PLANE 1 1/4'' UP TO AND BEYOND FINGER PLATE JOINTS	2 @ 31'
WILLISTON M.M. 84.99 STA. 4487+52	BR. # 63S 3 SIMPLE SPAN ROLLED BRIDGE	3' +/- OF EXISTING PAVEMENT WITH MEMBRANE ON BRIDGE	1 PLUG JOINT REQUIRED COLD PLANE 1 1/4''	2 @ 38'
SO. BURL. M.M. 87.205 STA. 4604+45	BR. # 65S 3 SIMPLE SPAN	3' +/- OF EXISTING PAVEMENT WITH MEMBRANE ON BRIDGE	1 PLUG JOINT REQUIRED COLD PLANE 1 1/4''	2 @ 46'
SO. BURL. M.M. 87.327 STA. 4610+89	BR. # 66S 3 SIMPLE SPAN	3' +/- OF EXISTING PAVEMENT WITH MEMBRANE ON BRIDGE	1 PLUG JOINT REQUIRED COLD PLANE 1 1/4''	2 @ 31'
				TOTAL 1,530'

NOTE: EXISTING PAVEMENT THICKNESSES ARE BASED ON BRIDGE INSPECTION AND FILE INFORMATION WHICH HAVE NOT BEEN FIELD VERIFIED.

RESIDENT ENGINEER SHALL AT HIS/HER DISCRETION, SAW CUT THE FIXED JOINT AND FILL WITH HOT POURED MATERIALS.

NOT TO SCALE

**PROJECT
TYPICAL
SHEET 2**

PROJECT NAME: BOLTON - SO. BURLINGTON

PROJECT NUMBER: AC IM 089-2(36)

FILE NAME: /pave/04all4/04all4.dgn

PROJECT LEADER:

DESIGNED BY:

IPARM NAME: p04all4p+2.i

PLOT DATE: 17-MAY-2005

DRAWN BY:

CHECKED BY:

SHEET 8 OF 76