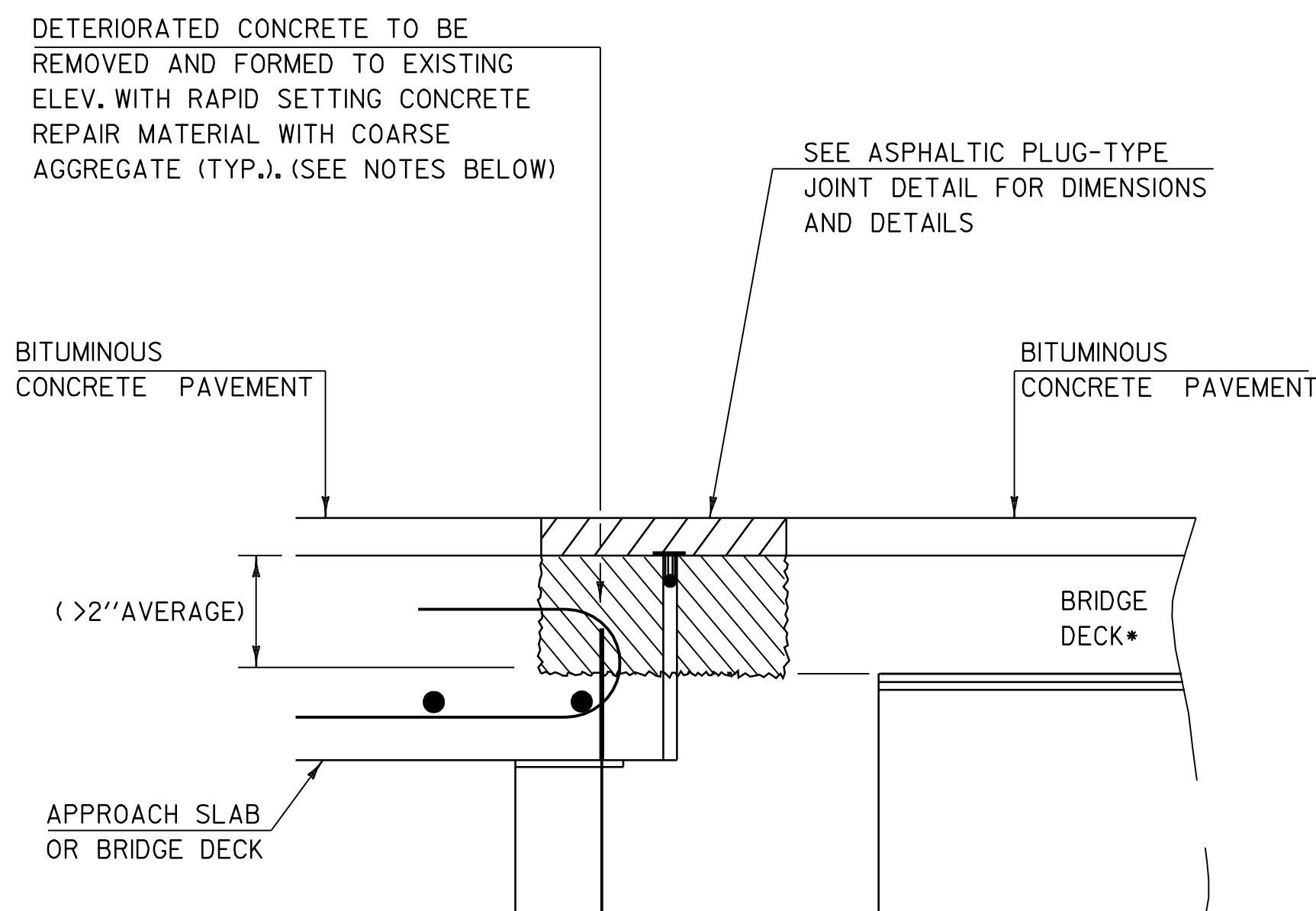


**ASPHALTIC PLUG TYPE JOINT DETAIL**

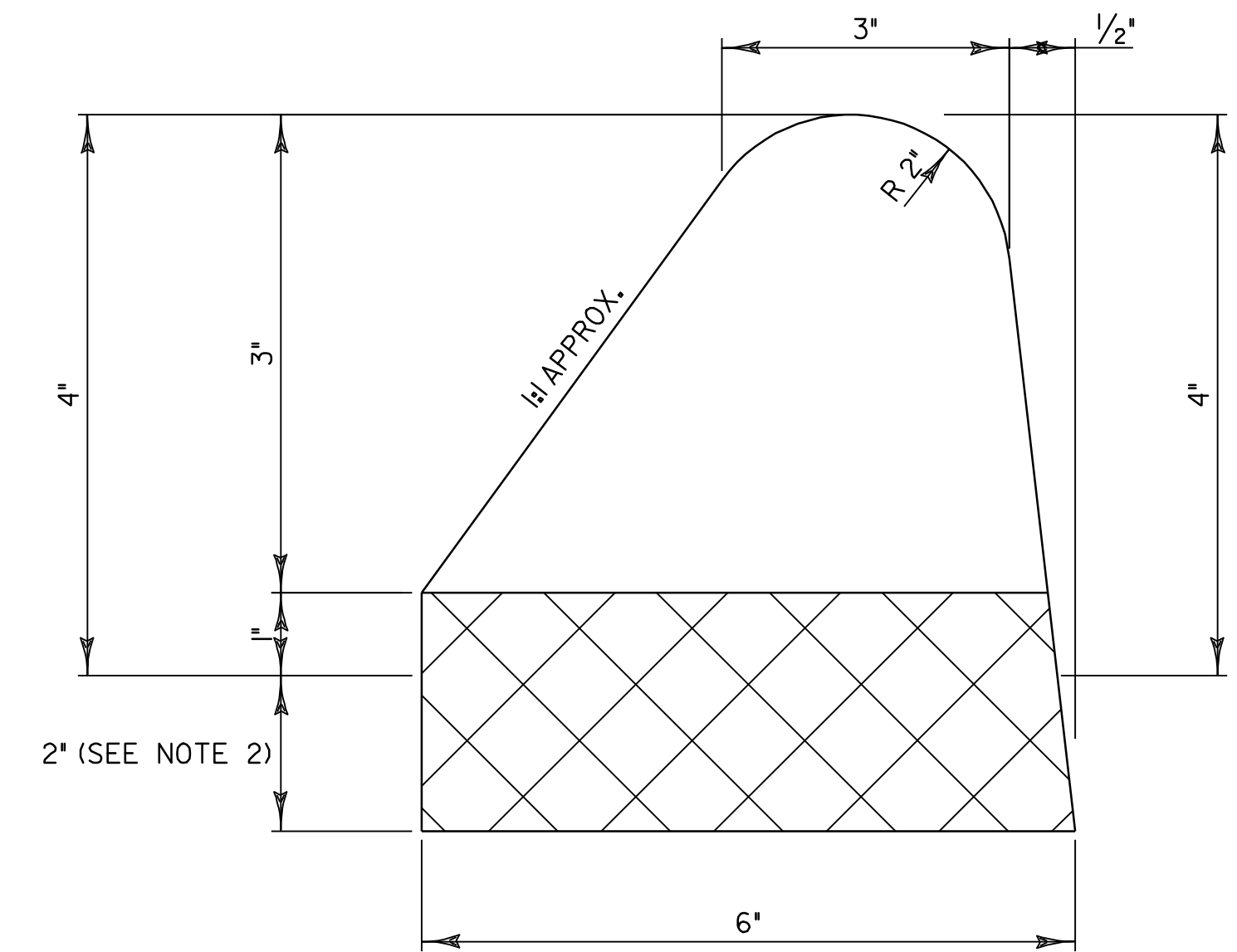


\*BRIDGE DECK REINFORCEMENT NOT SHOWN FOR CLARITY

**ASPHALTIC PLUG-TYPE JOINT DETAIL  
REMOVAL OF >2\"**

**NOTES:**

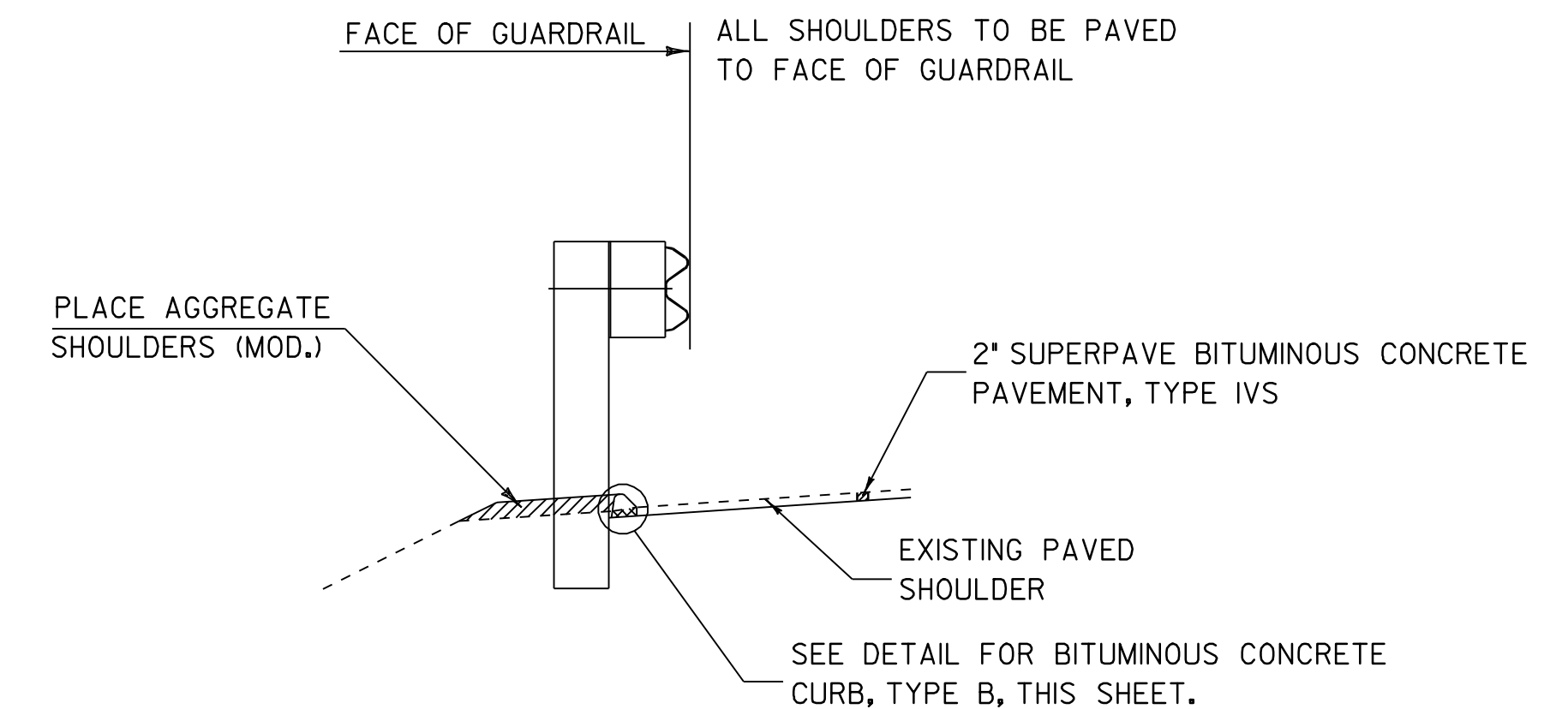
1. UPON ENCOUNTERING GREATER THAN 2\"
2. REMOVAL OF THE DETERIORATED CONCRETE WILL BE INCLUDED IN THE UNIT BID PRICE FOR ITEM 580.20 "RAPID SETTING CONCRETE REPAIR MATERIAL WITH COARSE AGGREGATE".
3. THE STEEL PLATE IN THE ASPHALTIC PLUG JOINT MAY BE OMITTED ONLY IF THE REPAIRED SURFACE IS SO IRREGULAR IT WILL CAUSE VERTICAL MOVEMENT AND IT IS DIRECTED BY THE RESIDENT ENGINEER.



**DETAIL FOR BITUMINOUS CONCRETE CURB, TYPE B**

**NOTE:**

1. BITUMINOUS CONCRETE CURB IS TO BE PLACED PRIOR TO THE INSTALLATION OF GUARDRAIL AND THE PLACEMENT OF THE WEARING COURSE OR AS DIRECTED BY THE RESIDENT ENGINEER.
2. MATCH 2\"
3. IN AREAS OF EXISTING BRIDGE CURB, BITUMINOUS CONCRETE CURB SHALL BE TRANSITIONED INTO THE EXISTING BRIDGE CURB AS DIRECTED BY THE RESIDENT ENGINEER.
4. REMOVAL OF EXISTING CURB TO BE PAID FOR UNDER ITEM 616.41, "REMOVAL OF EXISTING CURB". NEW CURB TO BE PAID FOR UNDER ITEM 616.31, "BITUMINOUS CONCRETE CURB, TYPE B".



**TYPICAL SECTION AT GUARDRAIL  
(EXISTING STEEL BEAM WITH CURBING)**

**NOTE:**

1. AN ESTIMATED QUANTITY OF BITUMINOUS CONCRETE CURB, TYPE B, IS INCLUDED IN THE QUANTITIES TO REPLACE DAMAGED OR MISSING CURB, AS DIRECTED BY THE RESIDENT ENGINEER. THIS ITEM WILL ALSO BE USED WHERE D'S ARE BEING REHABBED ALONG EXISTING BITUMINOUS CURB. AT THESE LOCATIONS, FOUR-FEET OF CURBING WILL BE REPLACED AT THE DI. SEE DETAIL FOR BITUMINOUS CURB, TYPE B, ON THIS SHEET.
2. THE CROSS HATCHED AREA SHALL BE CONSIDERED INCIDENTAL TO ITEM 616.31, "BITUMINOUS CONCRETE CURB, TYPE B".

**DETAILS ARE NOT TO SCALE**

**NOTES:**

1. UPON ENCOUNTERING UP TO 2\"
2. REMOVAL OF THE DETERIORATED CONCRETE WILL NOT BE PAID SEPARATELY BUT WILL BE CONSIDERED INCIDENTAL TO THE UNIT BID PRICE FOR THE ITEM 516.10. THE ADDITIONAL PLUG JOINT MATERIAL BELOW THE DESIGN DEPTH TO REPLACE THE DETERIORATED CONCRETE WILL BE CONSIDERED INCIDENTAL TO THE UNIT BID PRICE FOR THE ITEM 516.10.
3. THE STEEL PLATE IN THE ASPHALTIC PLUG JOINT MAY BE OMITTED AS SHOWN IN THE DETAIL ABOVE IF DIRECTED BY THE RESIDENT ENGINEER.

**BRIDGE  
LOCATION  
AND  
DETAIL  
SHEET**

PROJECT NAME: COLCHESTER - GEORGIA  
PROJECT NUMBER: IM 089-3(59)

FILE NAME: p04g030.DGN  
PROJECT LEADER: EPD  
DESIGNED BY: JDA  
PLOT FILE:

PLOT DATE: 12-OCT-2010 16:38  
DRAWN BY: RHB/SJB  
CHECKED BY: EPD  
SHEET 4 OF 22