

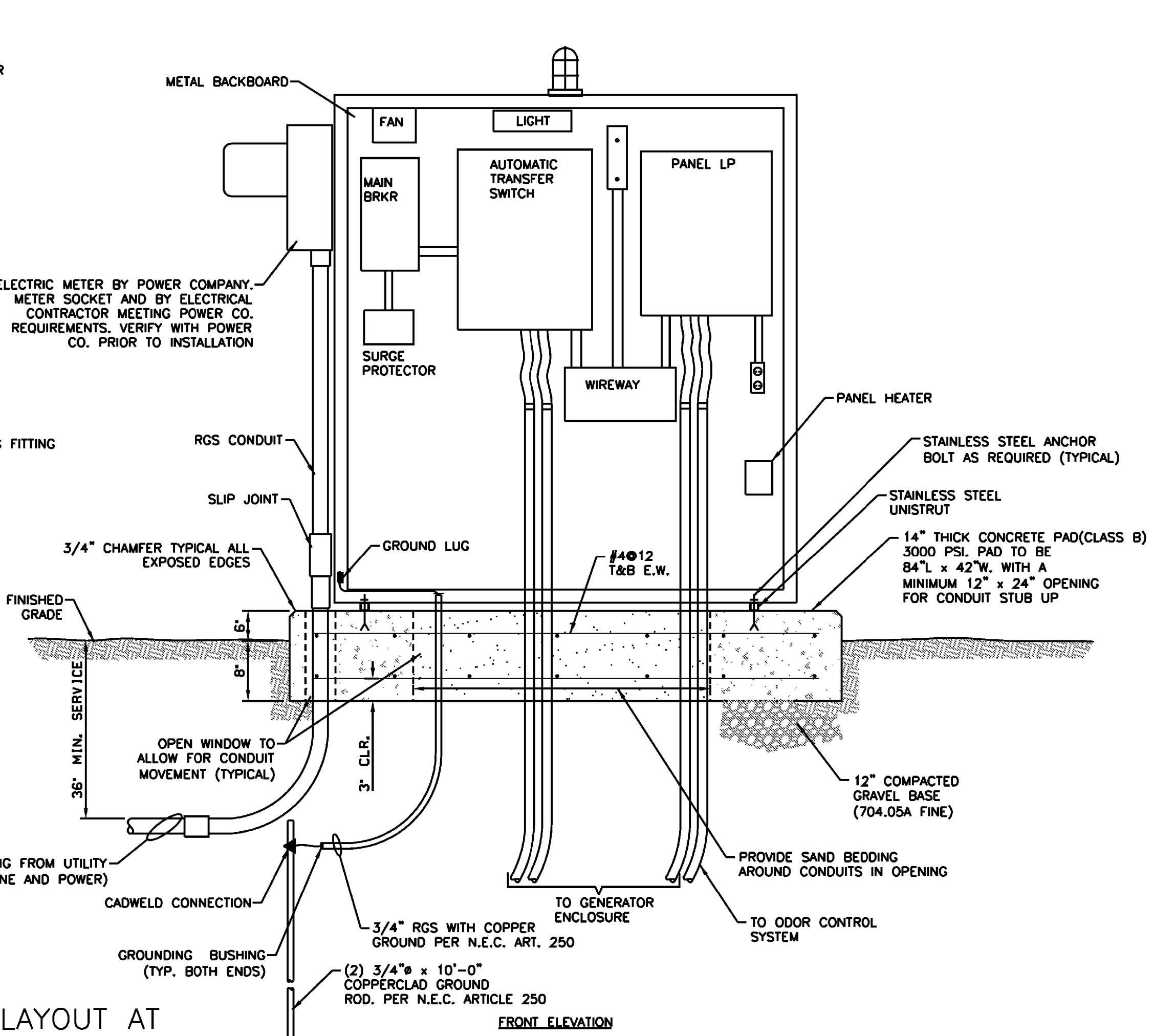
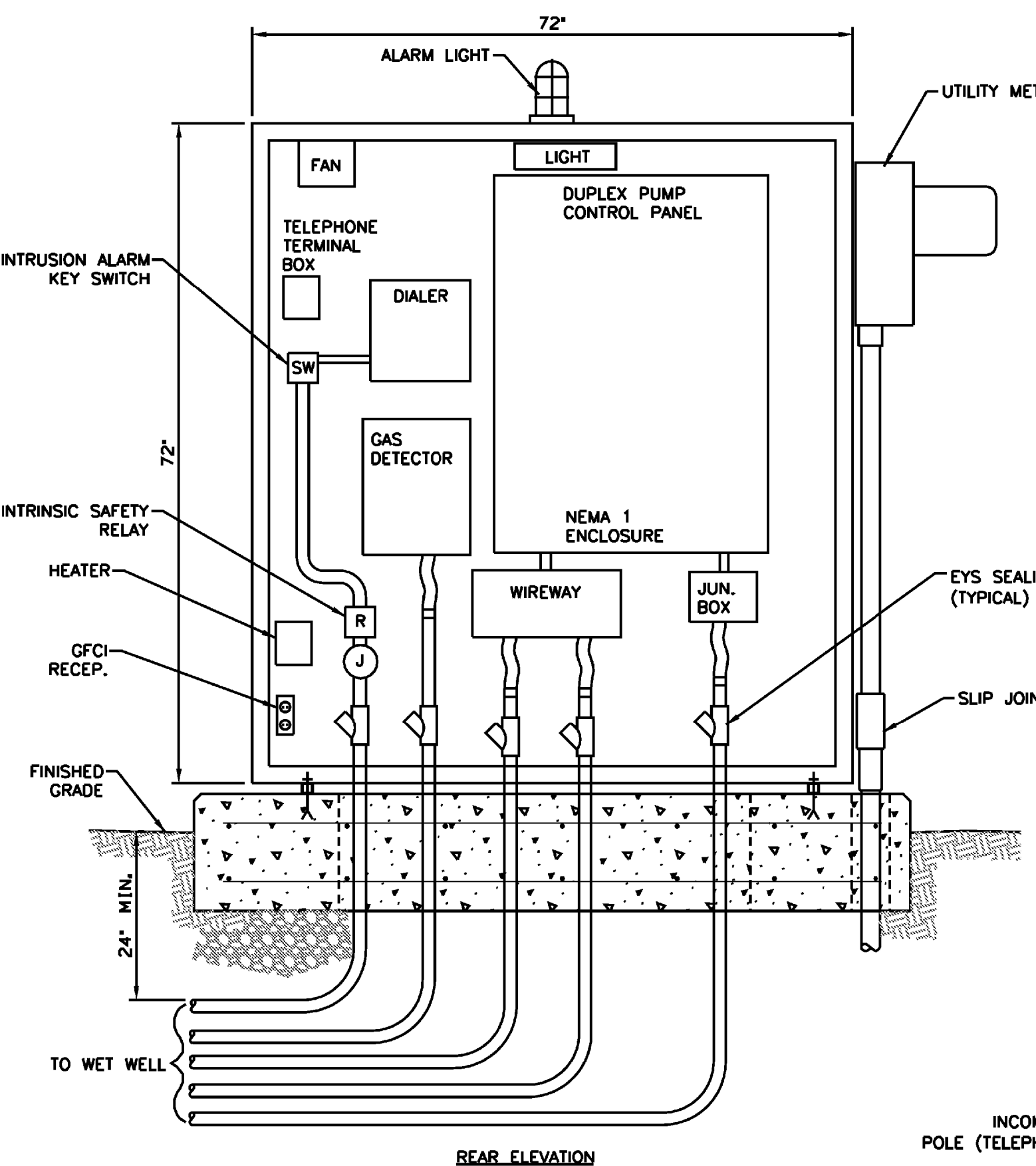
BUS	100 AMPERE	PANEL No. LP		LOCATION MOUNTING	SERVICE CABINET
PANEL RATING	TO KAIC			DRAWING No.	55 OF 70
SUPPLY VOLTAGE	208/120 VOLT				
SERVICE	1Ø, 3W WITH GROUND				

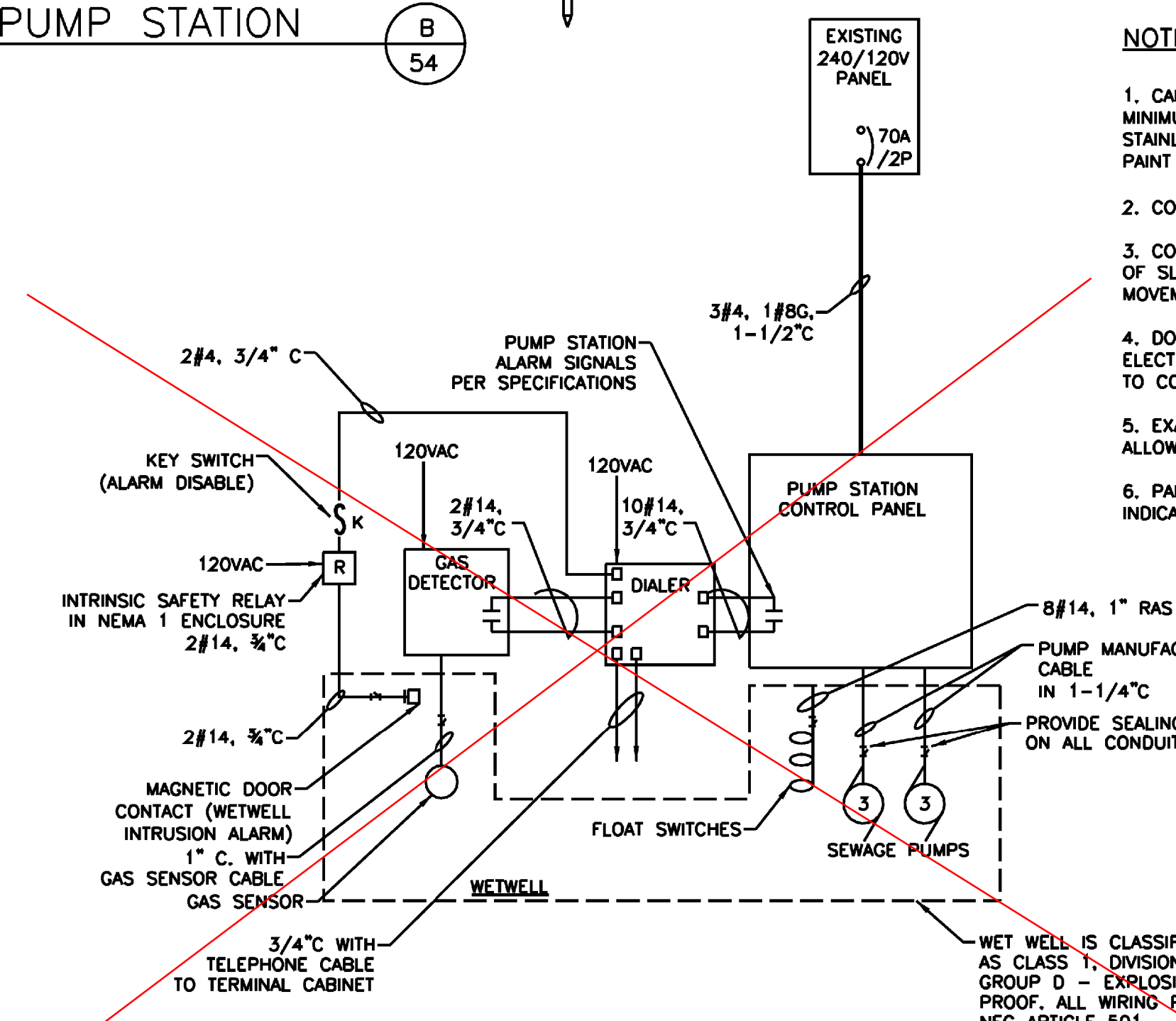
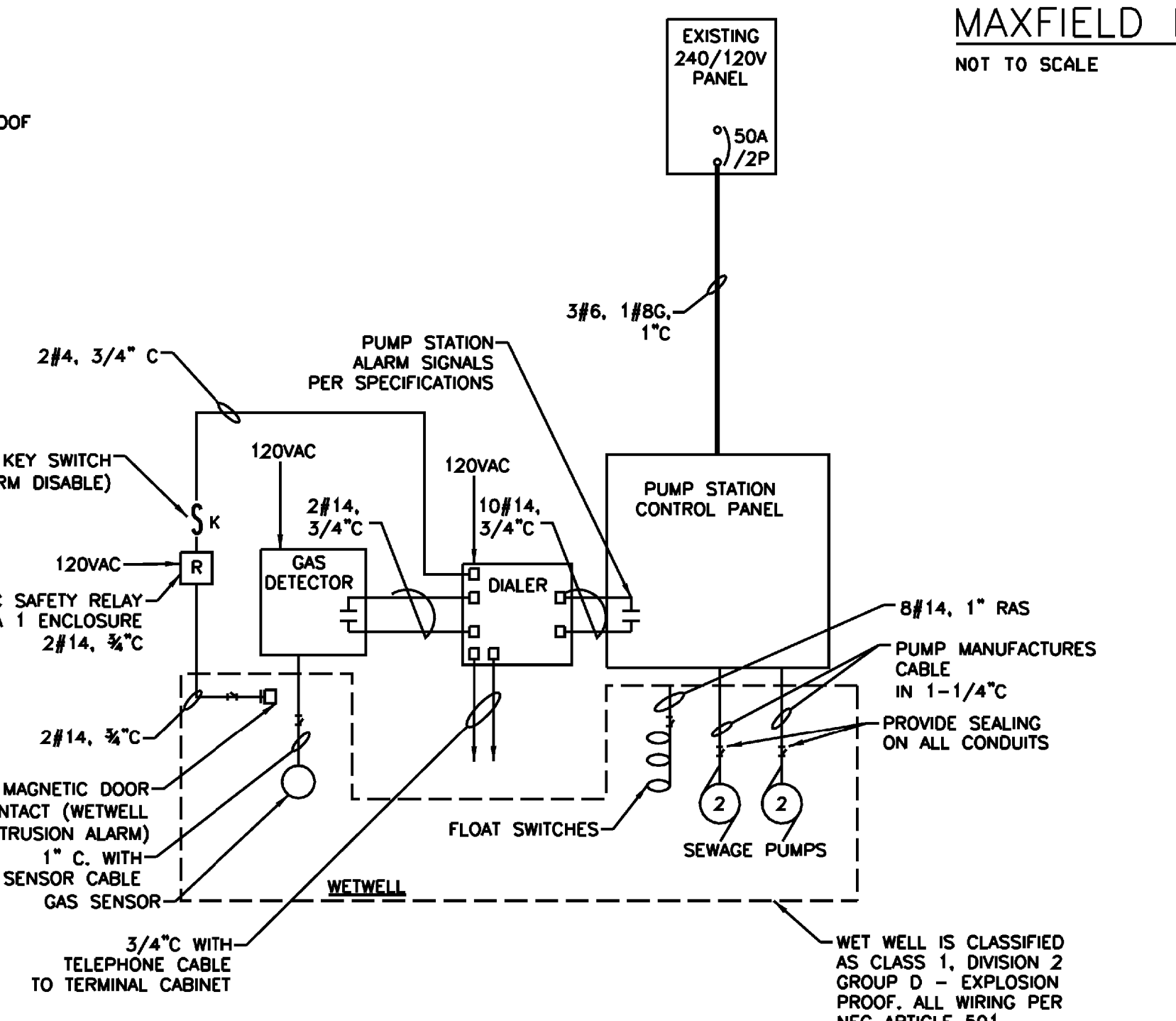
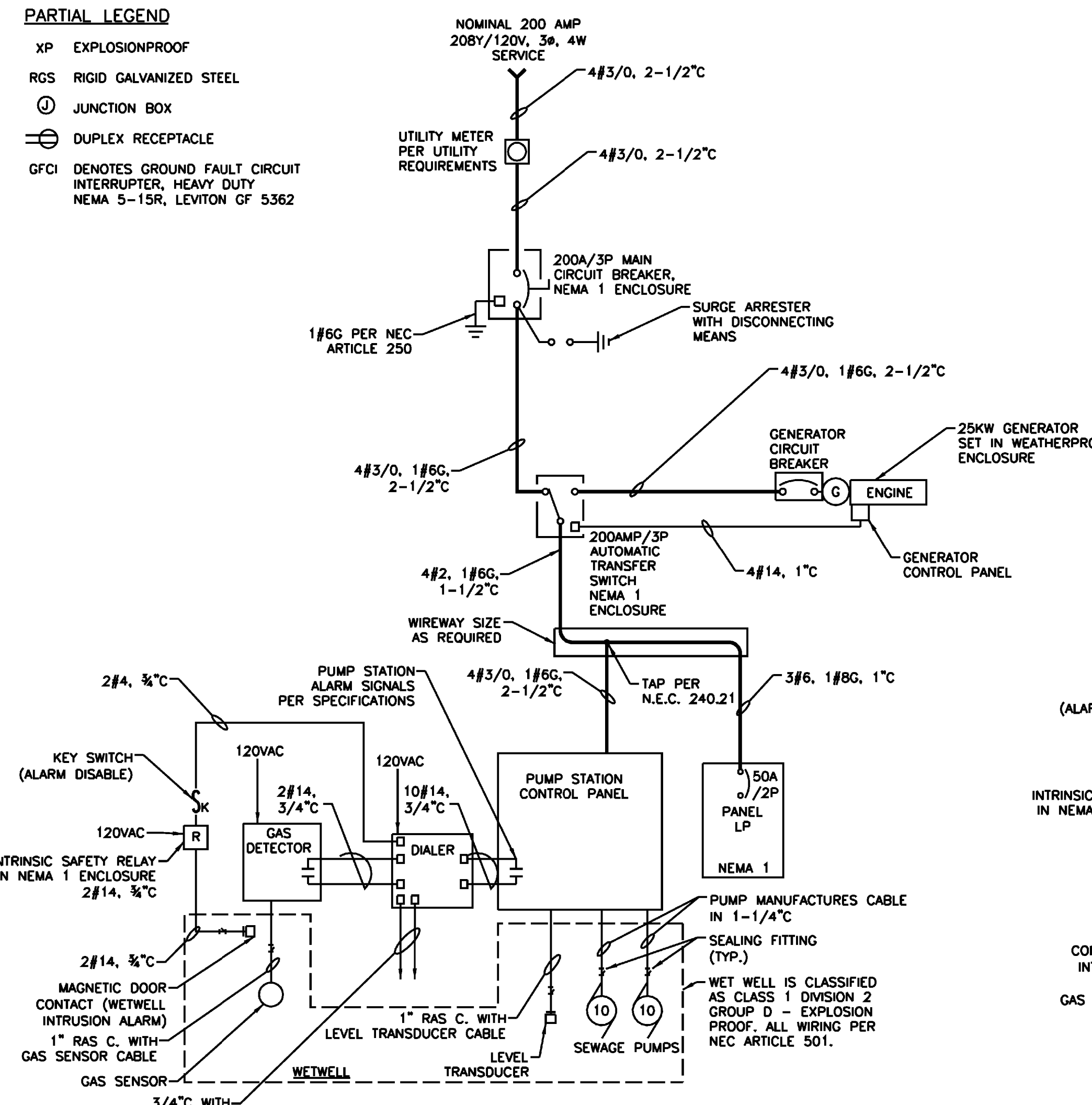
WIRING	COND	DESCRIPTION	VA OR W	BREAKER	CKT. NO.	CONDUCTOR	POLE	A	NO.	POLE	A	NO.	POLE	A	NO.	DESCRIPTION	COND	WIRING
2#12, 1#12C	3/4"	PANEL LIGHT, RECP, HTR	542	1	15	1	1	2	2	2	1500	1500				BLOCK HEATER	1"	4#10, 1#10G
2#12, 1#12C	3/4"	GAS DETECTOR/CONTROLS	1130	1	20	5	1	20	6	1	200	200				BATTERY CHARGER	1"	2#10, 1#10G
2#12, 1#12C	1"	EXHAUST FAN		1	20	7	1	20	8	1	20	200				ODOR CONTROL	1"	2#10, 1#10G
2#12, 1#12C	3/4"	FUTURE SCADA PANEL		1	20	9	1	20	10	1	20	200				SPACE		
		DIALER	100	1	20	11	1	20	12	1	20	200				SPACE		
		SPARE		1	20	11	1	20	12	1	20	200				SPACE		
TOTAL 1			1772		100													
TOTAL 2			1700		2170													
TOTAL 1 + 2			3472		2270													
CONN. LOAD TOTAL			4972															
AMPERES			24															

MAIN BREAKER	50A/2P	MAIN LUGS	
FEEDER ENTRANCE	TOP	ENCLOSURE TYPE	NEMA 1
FEEDER SIZE	3#6, 1#8G, 1"	ACCESSORIES	
SOURCE	ATS		
PANEL TYPE	BOLT-ON		



- PARTIAL LEGEND**
- XP EXPLOSIONPROOF
  - RGS RIGID GALVANIZED STEEL
  - ⊕ JUNCTION BOX
  - ⊖ DUPLEX RECEPTACLE
  - GFCI DENOTES GROUND FAULT CIRCUIT INTERRUPTER, HEAVY DUTY NEMA 5-15R, LEVITON GF 5362



- NOTE:**
1. CABINET TO BE U.L. LISTED, 72"x72"x36" DEEP MINIMUM WITH DOUBLE DOOR EACH SIDE, NEMA 3R RATED, STAINLESS STEEL OR ALUMINUM CONSTRUCTION, GREEN PAINT AND DRIP SHIELD.
  2. CONDUIT TO BE MIN. 24" BELOW GRADE.
  3. CONDUITS SHALL STUB UP THROUGH WINDOW IN CENTER OF SLAB OR THROUGH A SLEEVE IN THE SLAB TO ALLOW MOVEMENT OF SLAB.
  4. DO NOT RIGIDLY CONNECT UNDER GROUND CONDUIT AND ELECTRICAL DEVICES. PROVIDE FLEXIBLE CONDUIT FROM DEVICE TO CONDUIT WITH ENOUGH SLACK TO ALLOW FOR SLAB MOVEMENT.
  5. EXACT PANEL SIZE TO BE DETERMINED BY CONTRACTOR TO ALLOW PROVIDED EQUIPMENT TO FIT INSIDE PANEL.
  6. PANEL DOORS AND HARDWARE ARE NOT SHOWN TO CLEARLY INDICATE INTERIOR ELECTRICAL EQUIPMENT.

**MAXFIELD PUMP STATION SINGLE-LINE DIAGRAM**  
NOT TO SCALE

**REST AREA PUMP STATION SINGLE-LINE DIAGRAM (SOUTH BOUND REST AREA)**  
NOT TO SCALE

**REST AREA PUMP STATION SINGLE-LINE DIAGRAM (NORTH BOUND REST AREA)**  
NOT TO SCALE



PROJECT NAME:	HARTFORD REST AREAS
PROJECT NUMBER:	IM BLDG(10)
FILE NAME:	...u04a026pi1-Elec_Details.dgn
PROJECT LEADER:	JTM
DESIGNED BY:	WHH
ELECTRICAL DETAILS II	
PLOT DATE:	5/19/2008
DRAWN BY:	JSK
CHECKED BY:	JTM
SHEET	55 OF 70