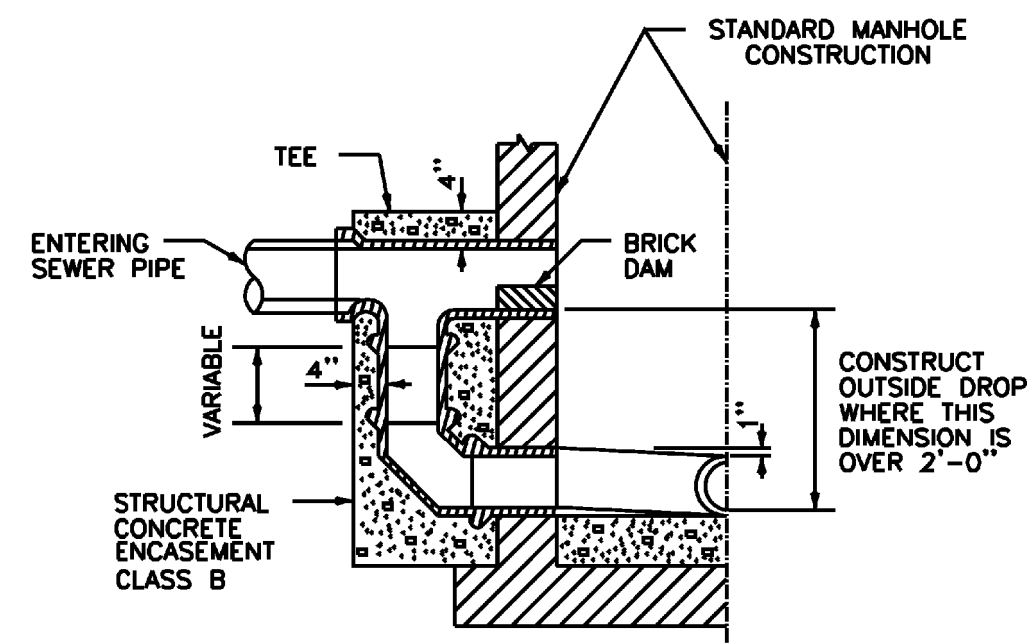
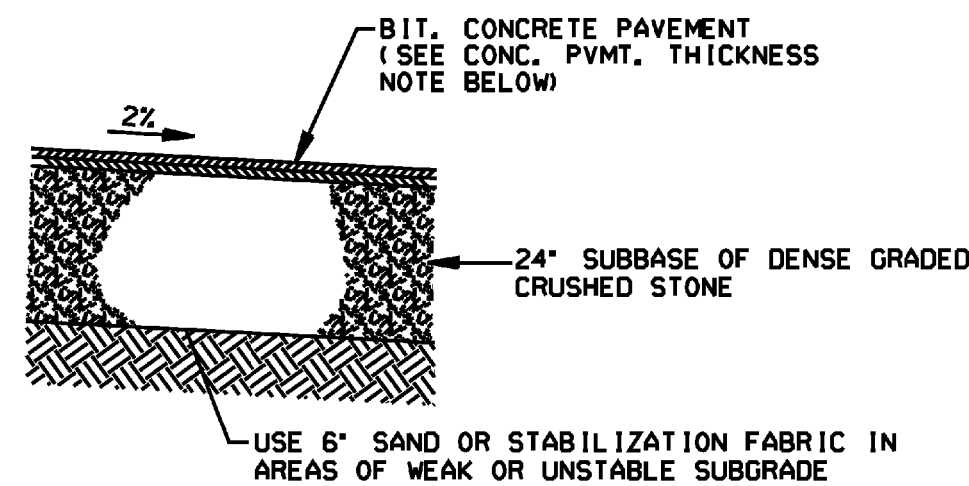


BUILDING SERVICE CLEAN OUT DETAIL
NOT TO SCALE



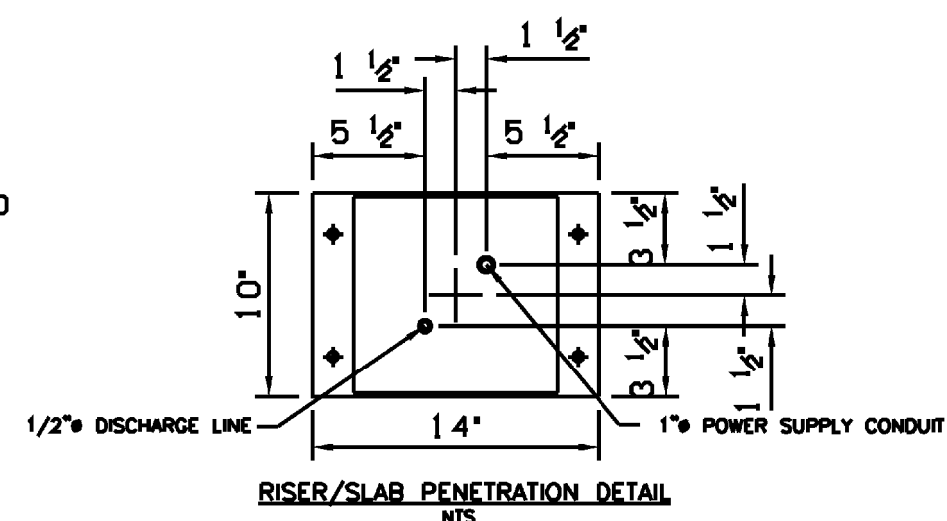
OUTSIDE MANHOLE DROP DETAIL
NOT TO SCALE



TYPICAL PAVEMENT SECTION
NOT TO SCALE

NOTE:
MATERIALS TO COMPLY WITH VERMONT AGENCY OF TRANSPORTATION STANDARD SPECIFICATIONS FOR CONSTRUCTION.

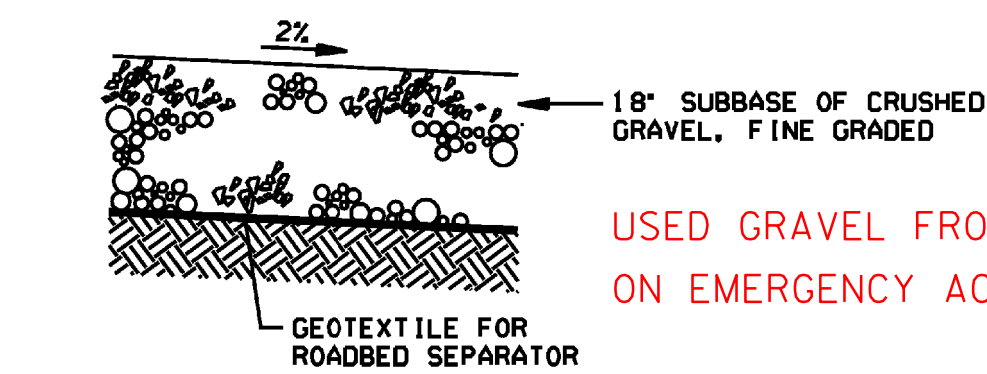
BITUMINOUS CONCRETE PAVEMENT THICKNESS NOTE:
 • 4" PERMANENT TRENCH PAVEMENT;
 • 2" TYPE III WEARING COURSE
 • 2" TYPE II BINDER COURSE



RISER/SLAB PENETRATION DETAIL
NOT TO SCALE

NOMENCLATURE

- ① CONTROL BOX ASSEMBLY (W/PUMPS)
- ② OVERFILL SIGHT TUBE ASSEMBLY
- ③ #2" FILL PIPING ASSEMBLY
- ④ #1/2" HTI SUCTION PIPING ASSEMBLY
- ⑤ CALIBRATION STAND ASSEMBLY
- ⑥ PUMP(S)
- ⑦ 14" X 10" SS PIPE STAND RISER
- ⑧ 36" X 24" X 48" SS PIPE/UTILITY TANK STAND
- ⑨ 1,500 GALLON TANK: 7'-2" DIAMETER, 6'-2" HIGH



TYPICAL GRAVEL ACCESS ROAD SECTION
NOT TO SCALE

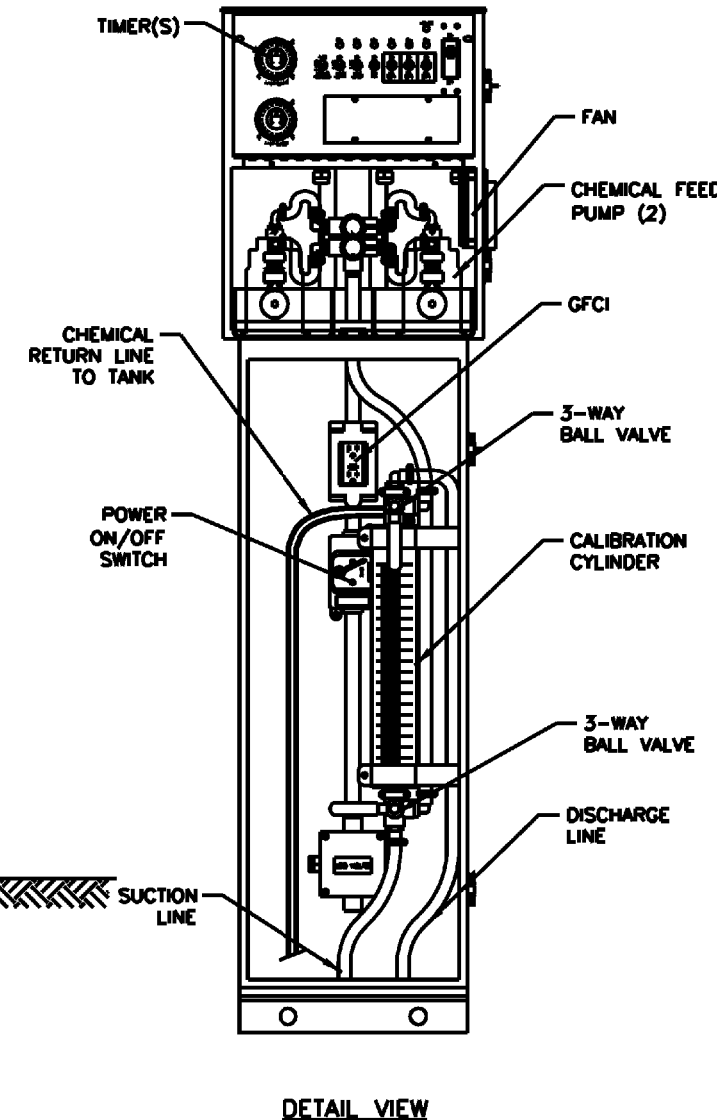
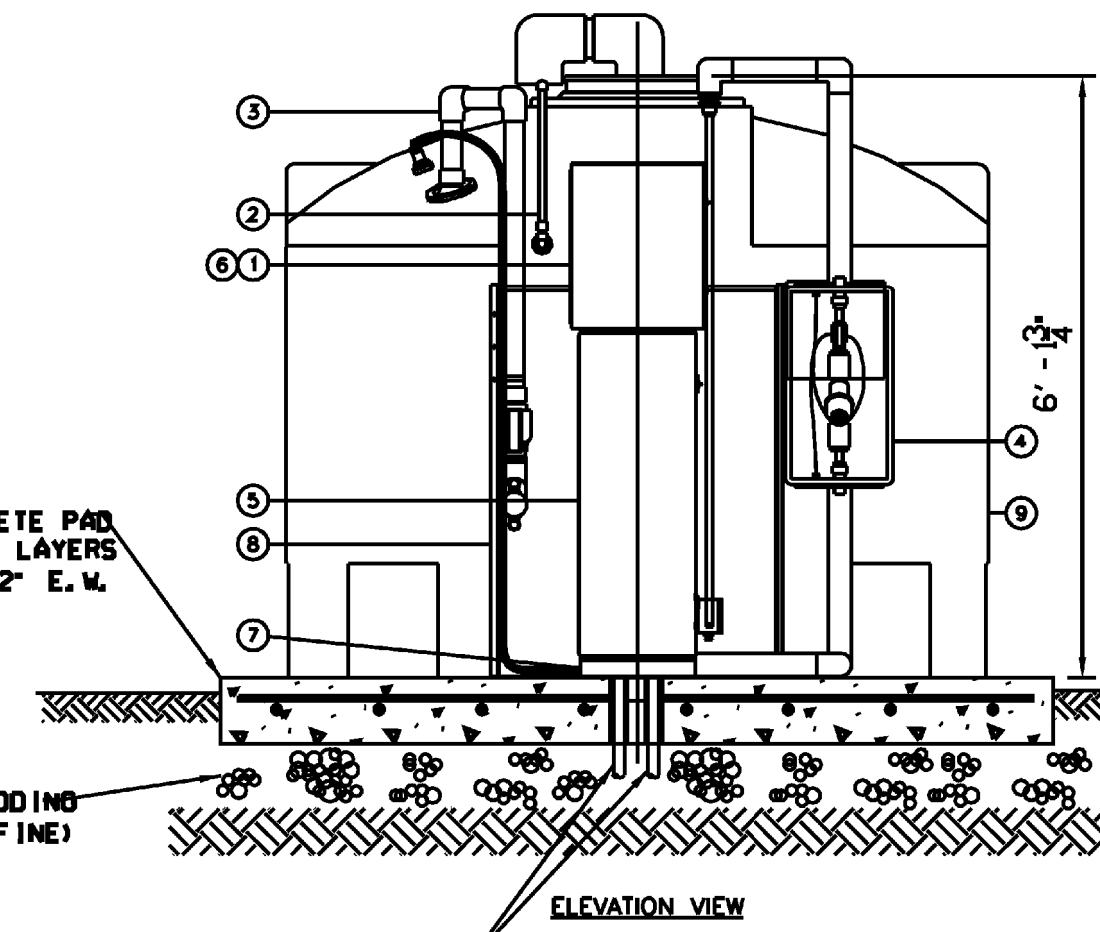
USED GRAVEL FROM MELISH ROAD ON EMERGENCY ACCESS ROAD

USED INSIDE DROP @ REQUEST OF TOWN OF HARTFORD

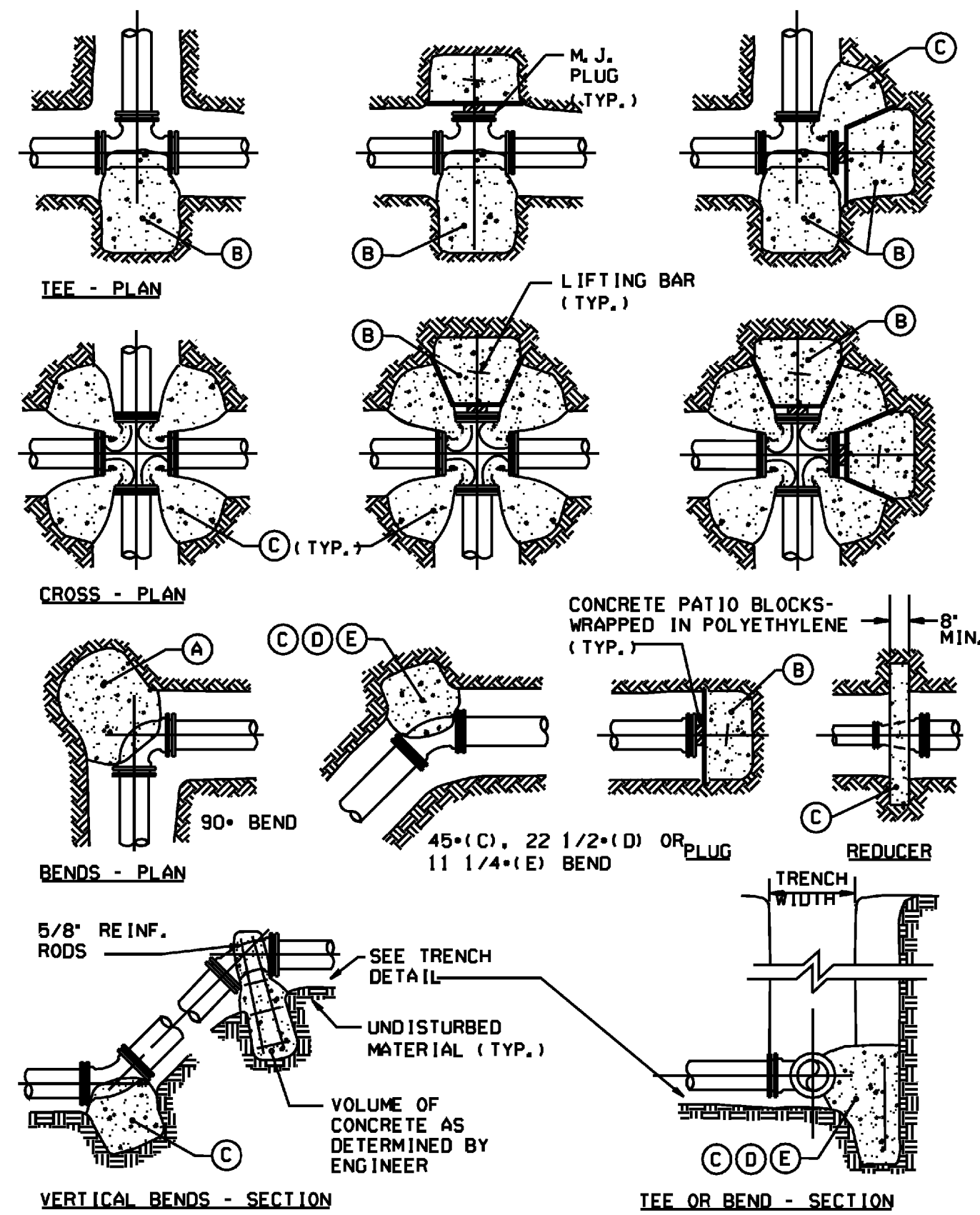
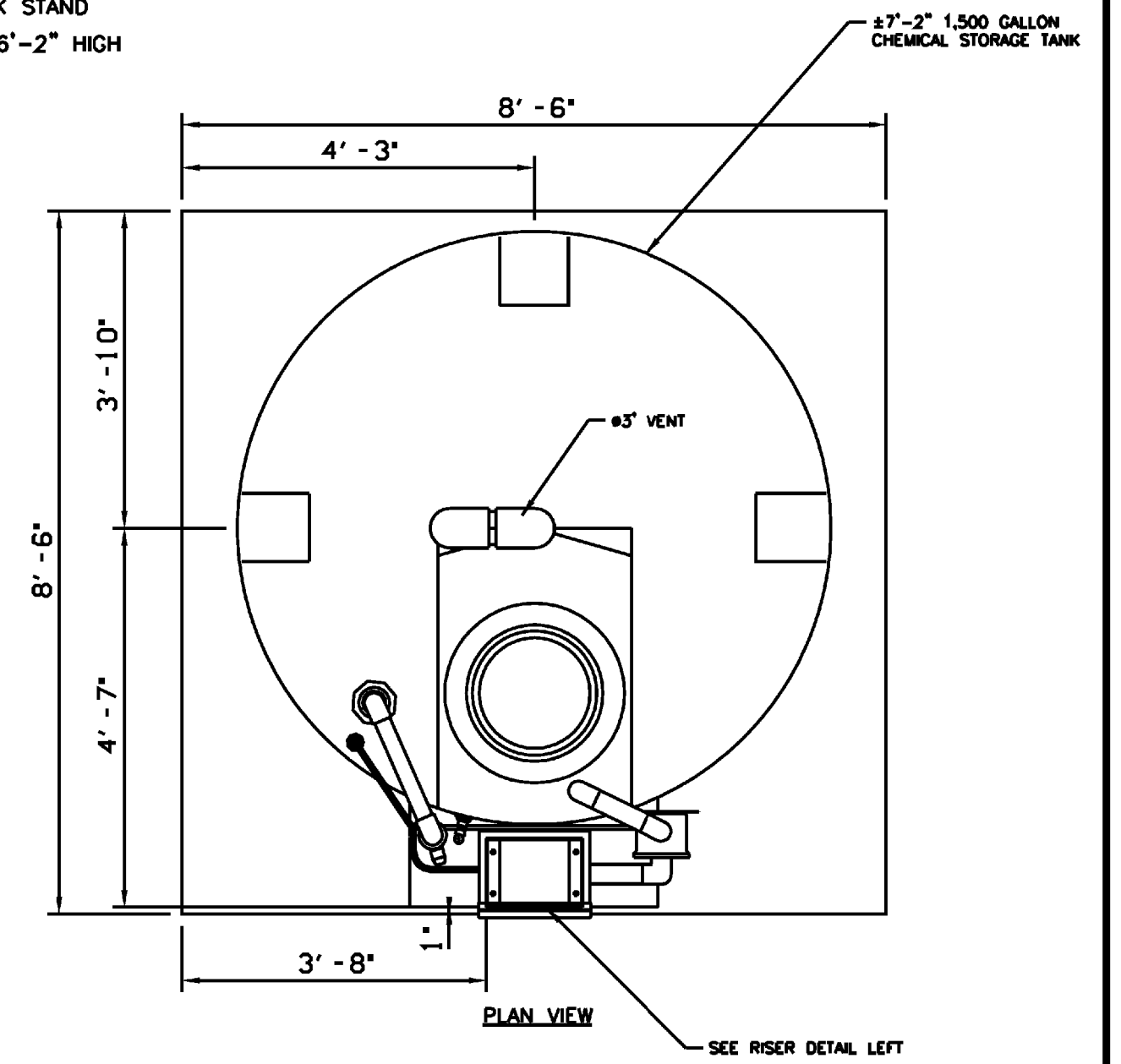
12" THICK CONCRETE PAD REINFORCED WITH 2 LAYERS #5 @ 12" E.M.

12" LAYER CRUSHED GRAVEL BEDDING 704,05A (FINE)

TWO (2) 4" STEEL SLEEVES CAST INTO SLAB FOR DISCHARGE LINE AND POWER SUPPLY



BIOXIDE TANK DETAIL
SCALE: 1/2" = 1'-0"



THRUST BLOCK DETAILS
NOT TO SCALE

THRUST BLOCK SCHEDULE SQUARE FEET OF CONCRETE THRUST BLOCKING BEARING ON UNDISTURBED MATERIAL		
REACTION TYPE	PIPE SIZE	
	4"	6"
(A)	0.89	2.19
(B)	0.65	1.55
(C)	0.48	1.19
(D)	0.25	0.60
(E)	0.13	0.30

OTHER TEST PRESSURES FOR THE ABOVE REACTIONS: SQUARE FEET OF CONCRETE THRUST BLOCKING FOR OTHER TEST PRESSURES IS DIRECTLY PROPORTIONAL TO THE ABOVE TABLE. FOR INSTANCE, AT 200 PSI TEST PRESSURE FOR ABOVE NUMBERS DOUBLE.

NOTES:

- THRUST BLOCKS SHALL BE CONSTRUCTED WITH CLASS B CONCRETE. POUR THRUST BLOCKS AGAINST UNDISTURBED MATERIAL. WHERE TRENCH WALL HAS BEEN DISTURBED, EXCAVATE LOOSE MATERIAL AND EXTEND THRUST BLOCK TO UNDISTURBED MATERIAL. NO JOINTS SHALL BE COVERED WITH CONCRETE.
- ON BENDS AND TEES, EXTEND THRUST BLOCKS FULL LENGTH OF FITTING.
- PLACE CONCRETE PATIO BLOCKS IN FRONT OF ALL PLUGS BEFORE POURING THRUST BLOCK.
- REQUIREMENTS OF THE ABOVE TABLE PRESUME MINIMUM SOIL BEARING OF 1 TON PER SQUARE FOOT, AND MAY BE VARIED BY THE ENGINEER TO MEET OTHER CONDITIONS ENCOUNTERED.
- MEGALUG RETAINER GLANDS ARE REQUIRED FOR ALL MECHANICAL JOINTS. THESE GLANDS DO NOT REDUCE THE REQUIREMENTS FOR THRUST RESTRAINT.
- ALL FITTINGS SHALL BE WRAPPED IN POLYETHYLENE OR BUILDING PAPER PRIOR TO INSTALLATION OF CONCRETE RESTRAINT.
- THREADED ROD SHALL BE ANSI A242 F150 PIPE RESTRAINT NUTS TO MATCH AWWA C111. THREADED RODS AND NUTS TO BE FIELD COATED WITH BITUMINOUS PAINT.
- THRUST RESTRAINT IS REQUIRED FOR ALL TEES, BENDS, REDUCERS, CAPS, PLUGS, OR CROSSES. 9. INSTALL LIFT HOOKS INTO THRUST BLOCKS AT END CAPS AND PLUGS.



PROJECT NAME: HARTFORD REST AREAS
 PROJECT NUMBER: IM BLDG(10)
 FILE NAME: \\u04026pit-Sewer_Details.dgn PLOT DATE: 5/19/2008
 PROJECT LEADER: JTM DRAWN BY:
 DESIGNED BY: CHECKED BY: JTM
 SEWER DETAIL SHEET 2 SHEET 52 OF 70