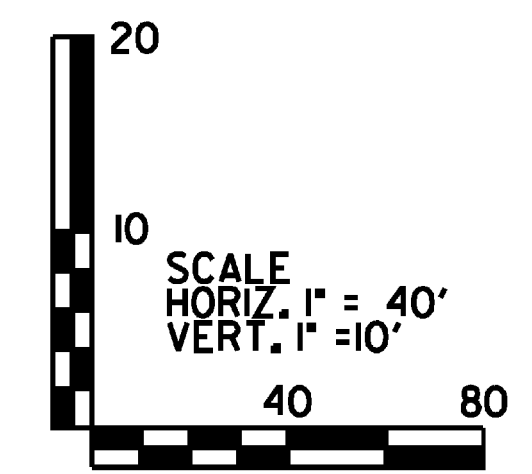
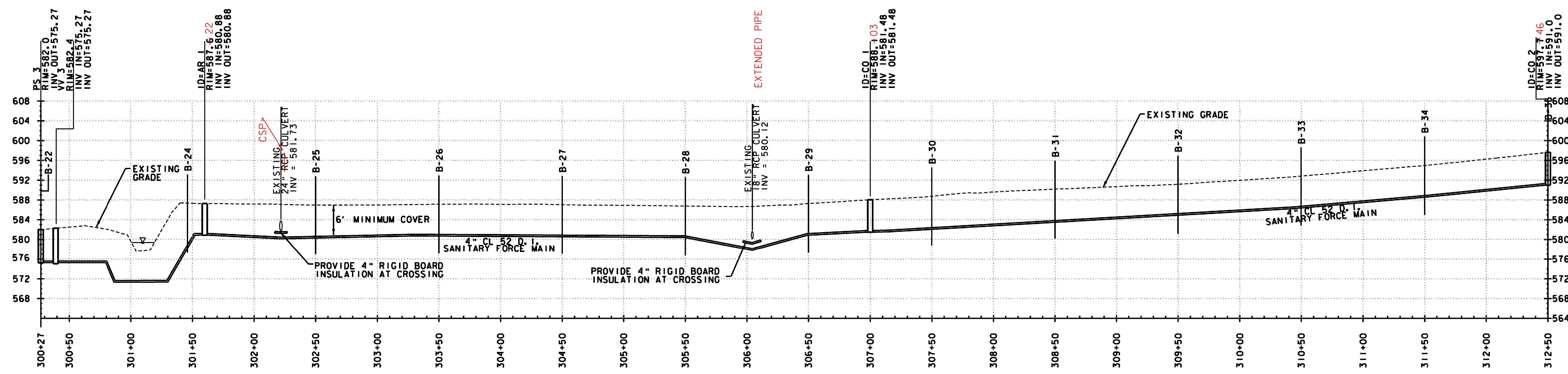
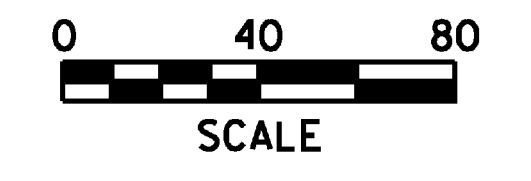
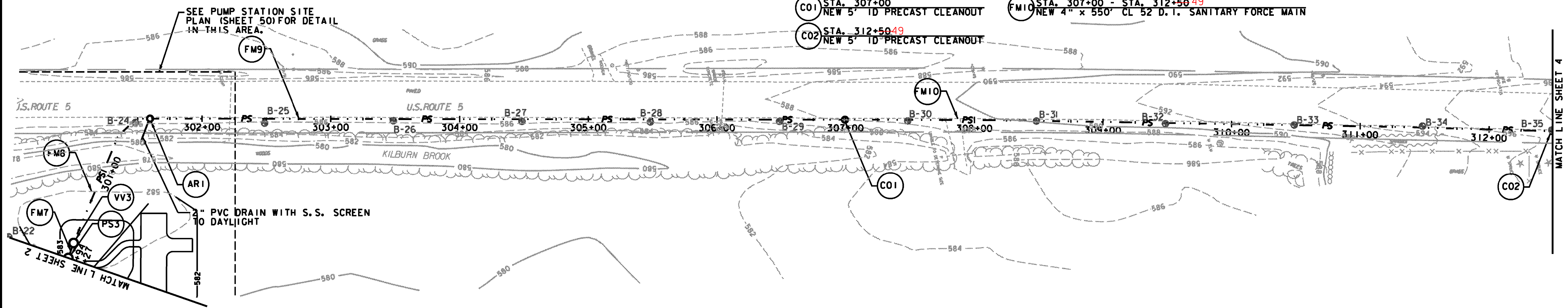


**SANITARY SEWER SYSTEM**

- |   |   |
|---|---|
| <b>STRUCTURES</b>                                   | <b>PIPES</b>  |
| PS3 STA. 300+27 = STA. 216+94<br>NEW PUMP STATION   | FM7 STA. 300+27 - STA. 300+39<br>TWO (2) NEW 4" x 12' CL 52 D.I. SANITARY FORCE MAINS |
| VV3 STA. 300+39<br>NEW VALVE PIT                    | FM8 STA. 300+39 - STA. 301+60.61<br>NEW 4" x 121' CL 52 D.I. SANITARY FORCE MAIN      |
| AR1 STA. 301+60.61<br>NEW 5" ID PRECAST AIR RELEASE | FM9 STA. 301+60.61 - STA. 307+00<br>NEW 4" x 540' CL 52 D.I. SANITARY FORCE MAIN      |
| CO1 STA. 307+00<br>NEW 5" ID PRECAST CLEANOUT       | FM10 STA. 307+00 - STA. 312+50.49<br>NEW 4" x 550' CL 52 D.I. SANITARY FORCE MAIN     |
| CO2 STA. 312+50.49<br>NEW 5" ID PRECAST CLEANOUT    |   |



PROJECT NAME: HARTFORD REST AREAS  
 PROJECT NUMBER: IM BLDG(10)  
 FILE NAME: ...plot files\04a026pl+wt\dgnPLOT DATE: 5/19/2008  
 PROJECT LEADER: JTM DRAWN BY: PZA  
 DESIGNED BY: MEHP CHECKED BY: JTM  
 PLAN & PROFILE SHEET 3 SHEET 39 OF 70