

GPS CONTROL POINTS

HVCTRL #1

HART NB REST
 NORTH = 409150.486
 EAST = 1681279.058
 ELEV. = 472.727

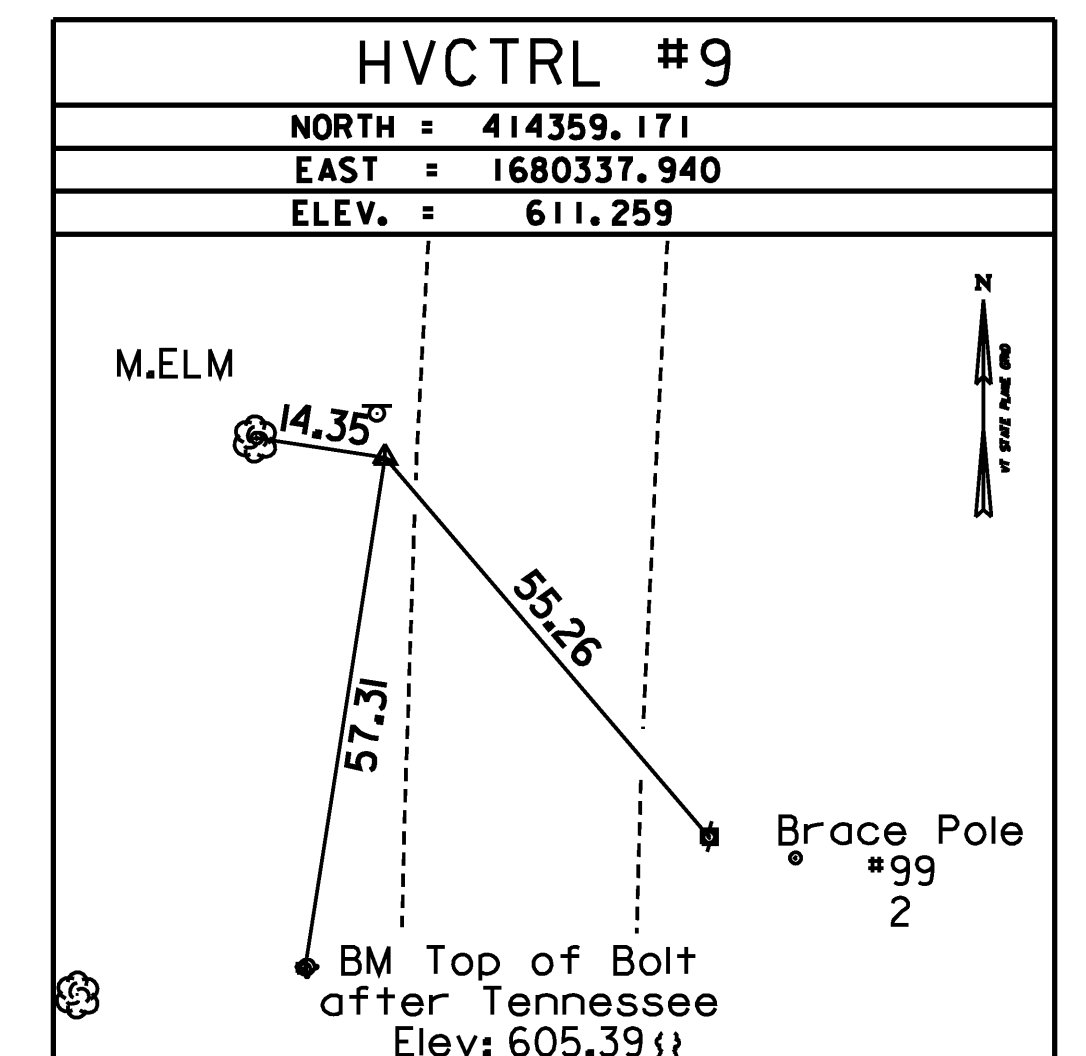
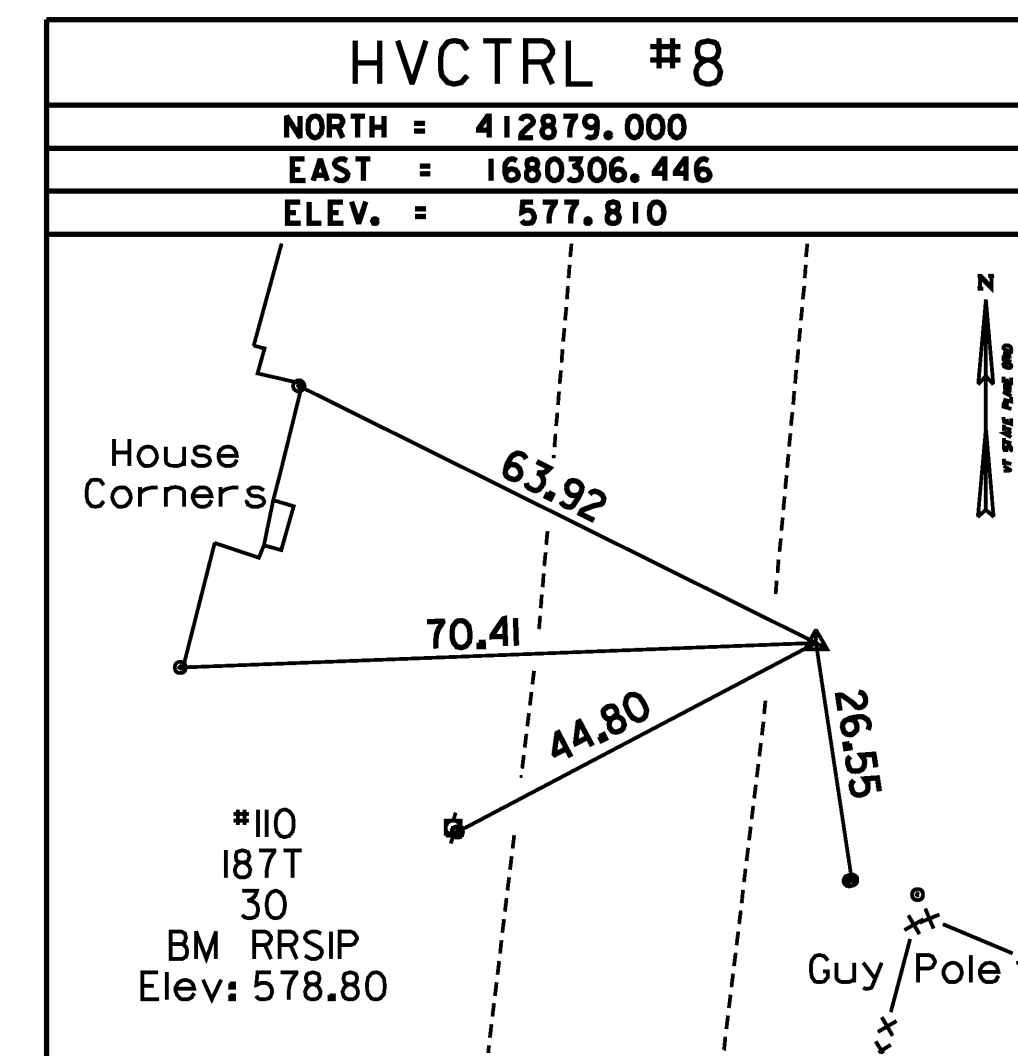
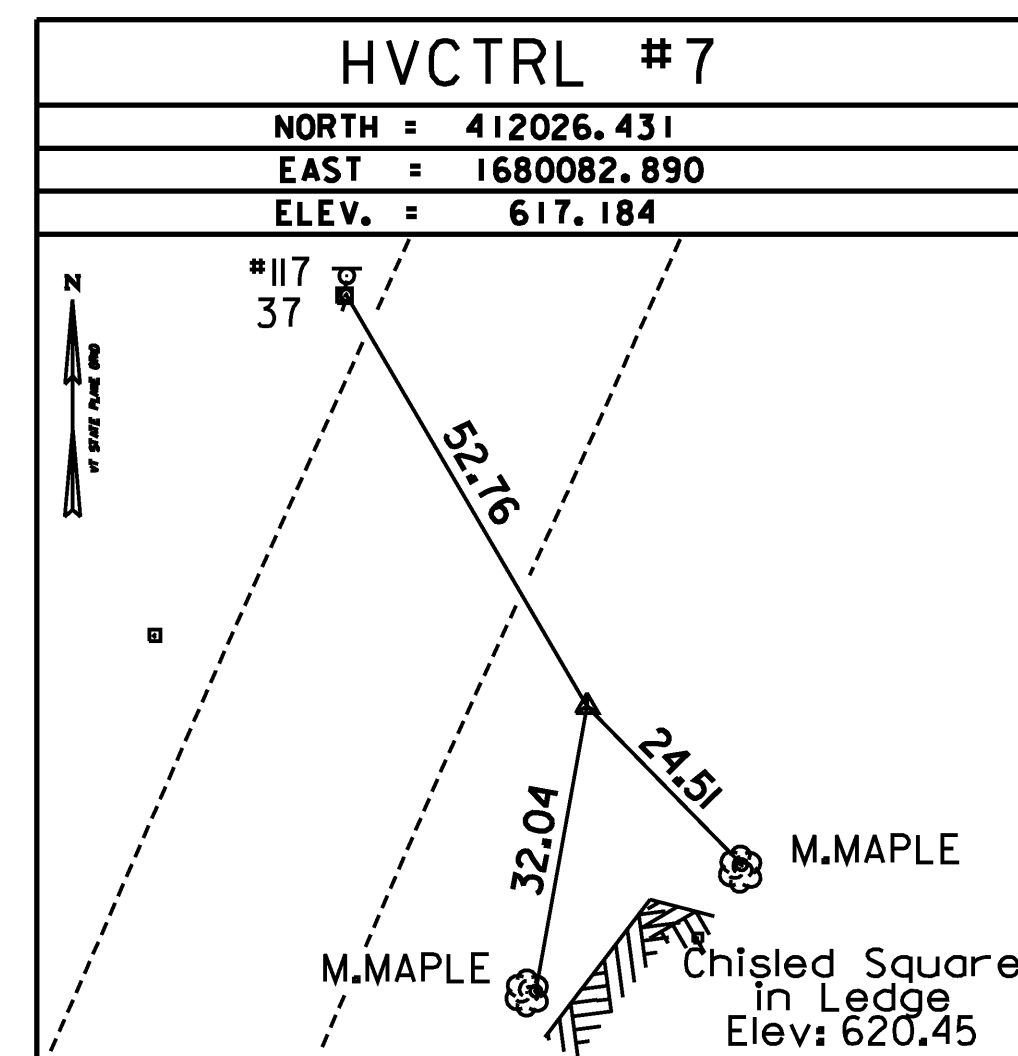
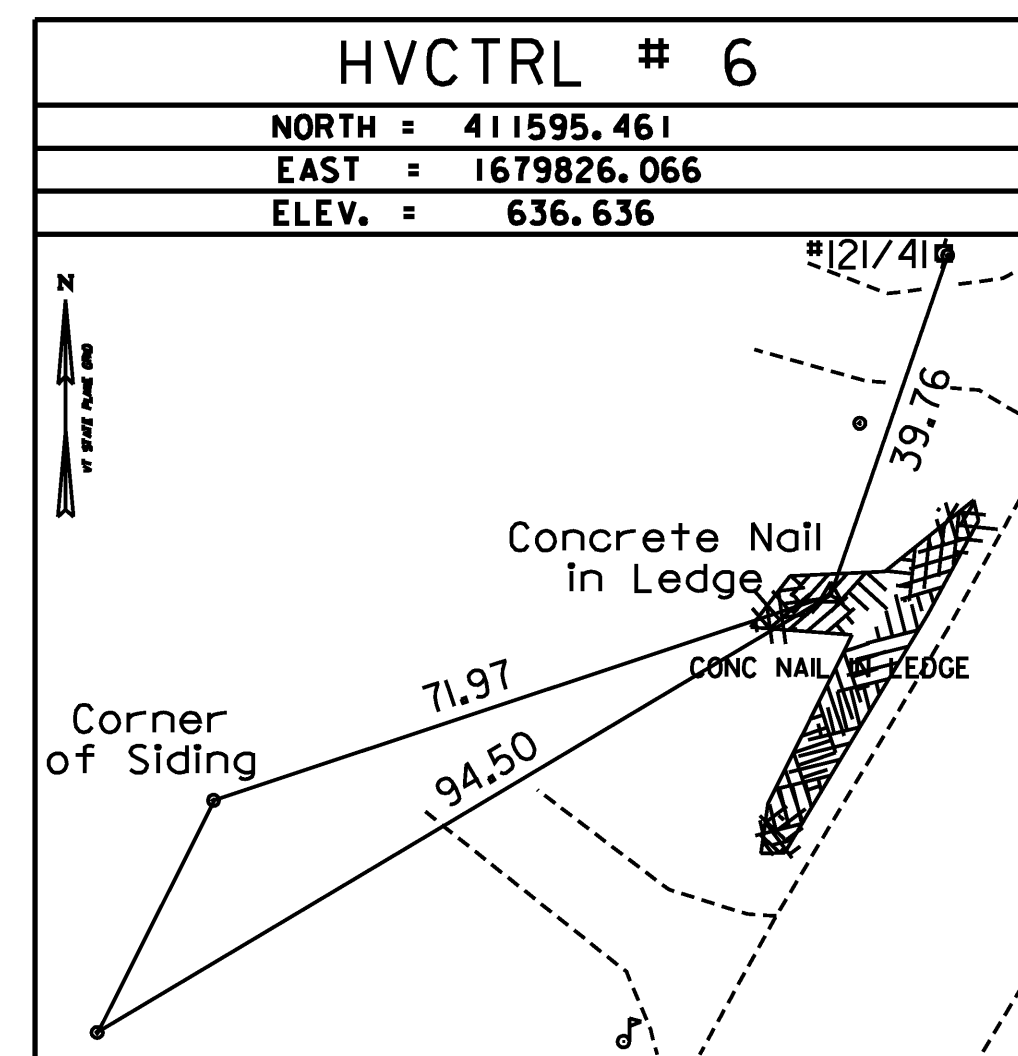
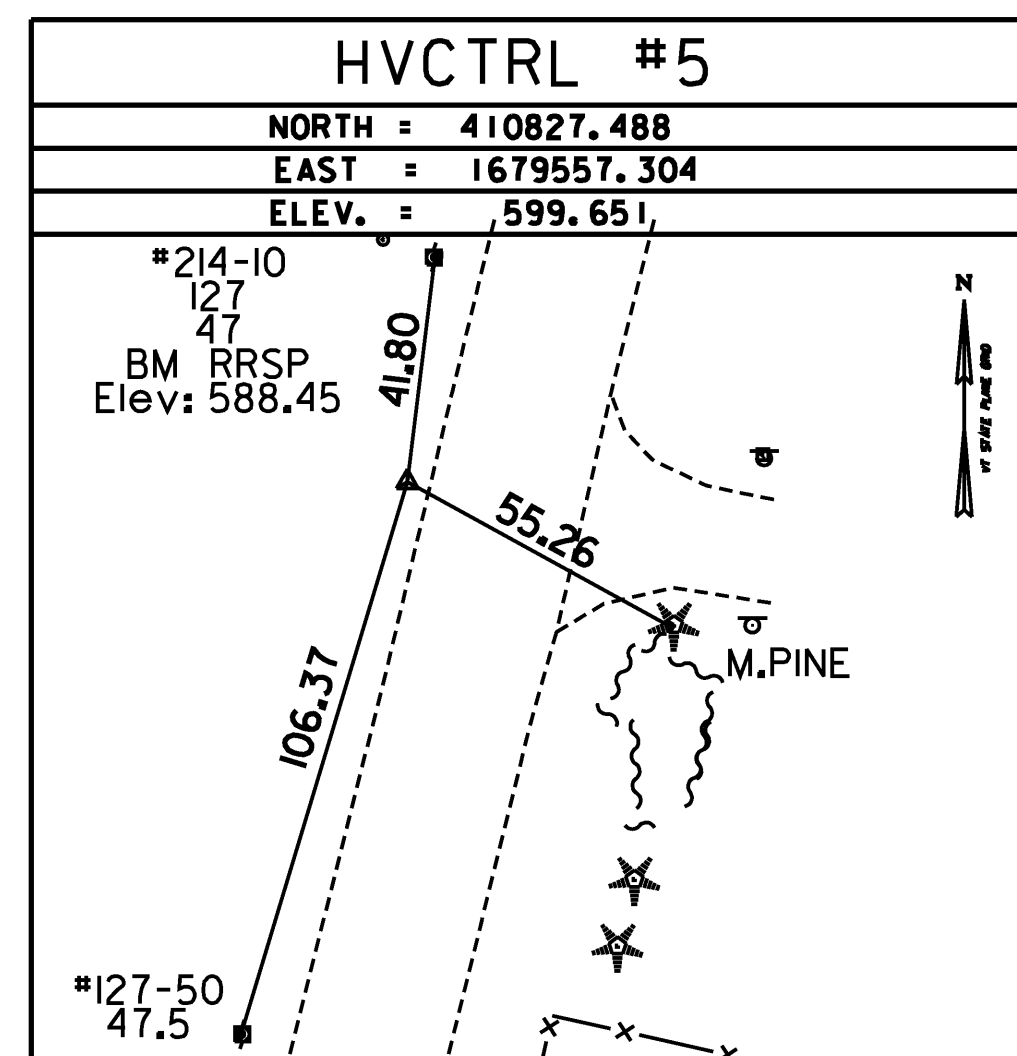
Described by Vermont Geodetic Survey (CHR)
 General Location, Hartford, VT. The mark is located in the northeast tip of the grassy region formed by the I-91 northbound southeast edge of pavement and the paved truck inspection parking area at the I-91 north bound Hartford rest area, adjacent to mile marker 68.40. The mark is set about 1ft above the ground surface in the top of a massive sloping rock outcrop which projects about 3.3 ft above ground surface on the southeast side. It is 30.8 ft southeast of and about 4.9 ft lower than the I-91 northbound southeast edge of pavement, 23.3 ft west northwest of the truck inspection parking area west northwest edge of pavement, 49.5 ft southwest of lumen #10, 57 ft southwest of the center of a 24" square metal drain, 107.9 ft north northeast of of lumen #9, and 6.6 ft northwest of a fiberglass witness post.

HVCTRL #2

HART NB REST AZ MK
 NORTH = 407788.053
 EAST = 1680680.975
 ELEV. = 480.797

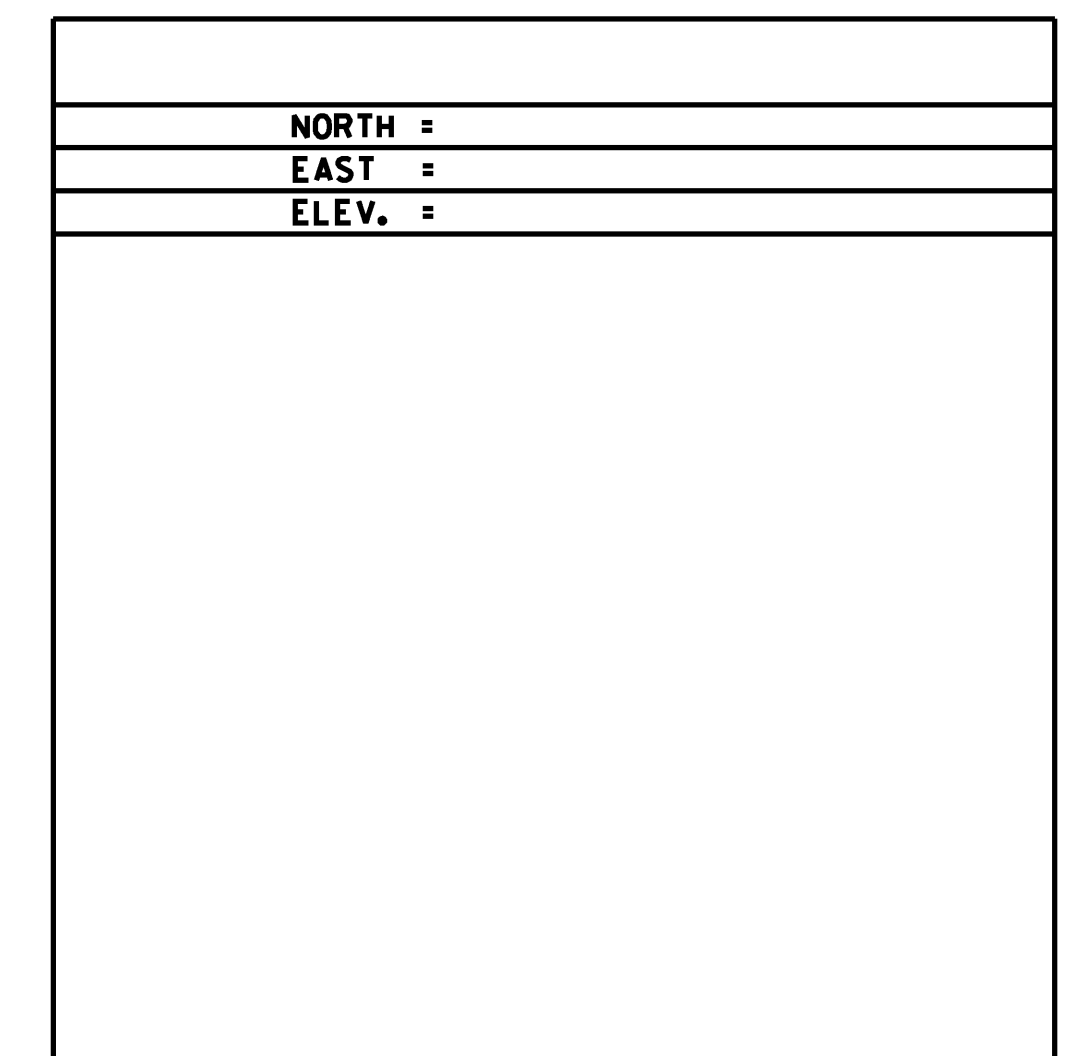
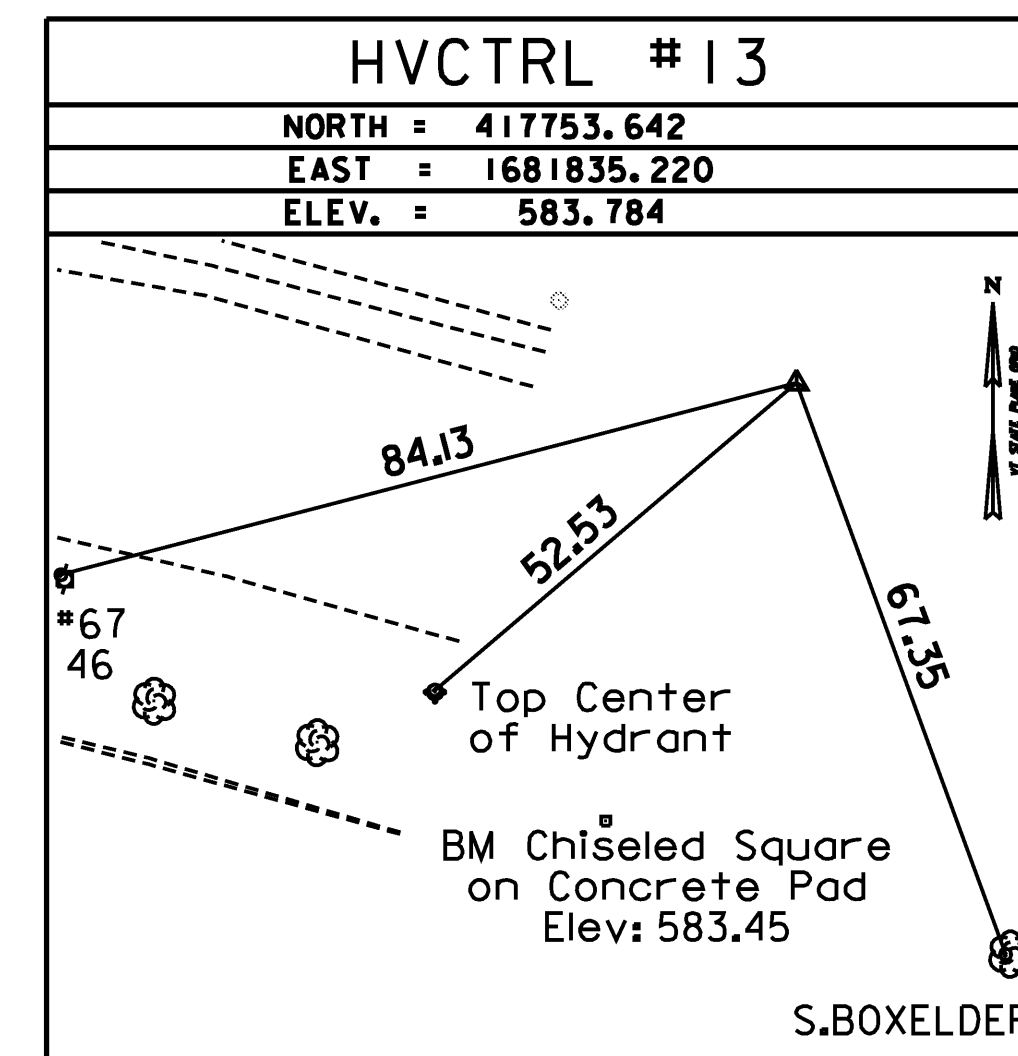
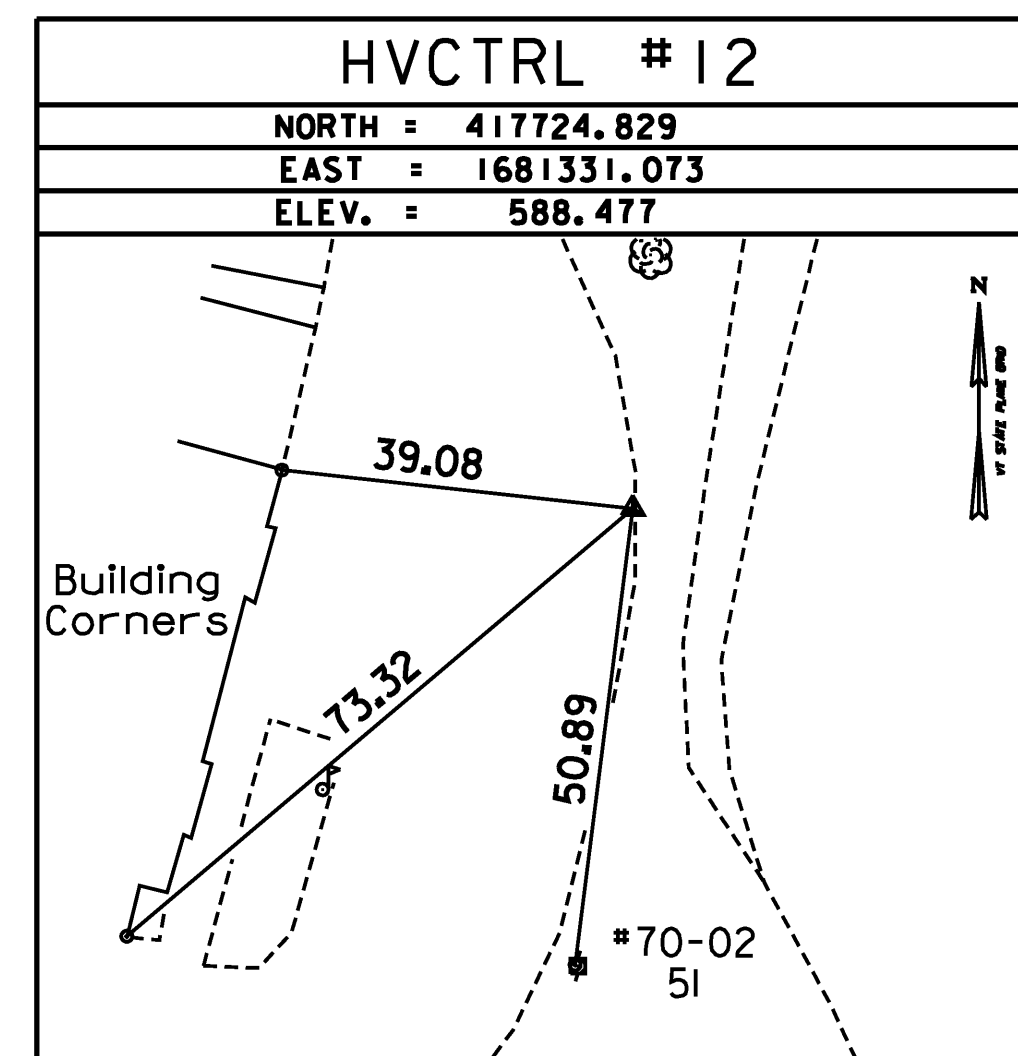
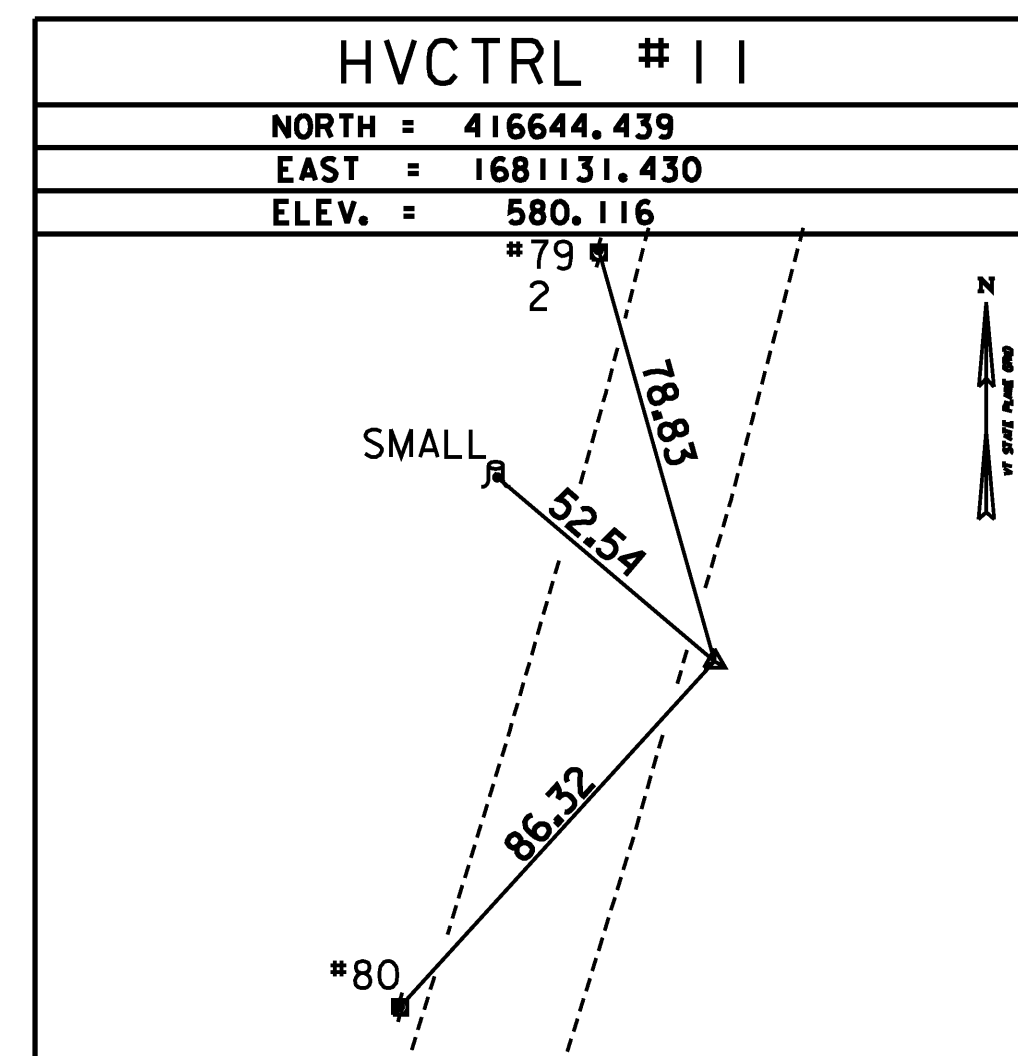
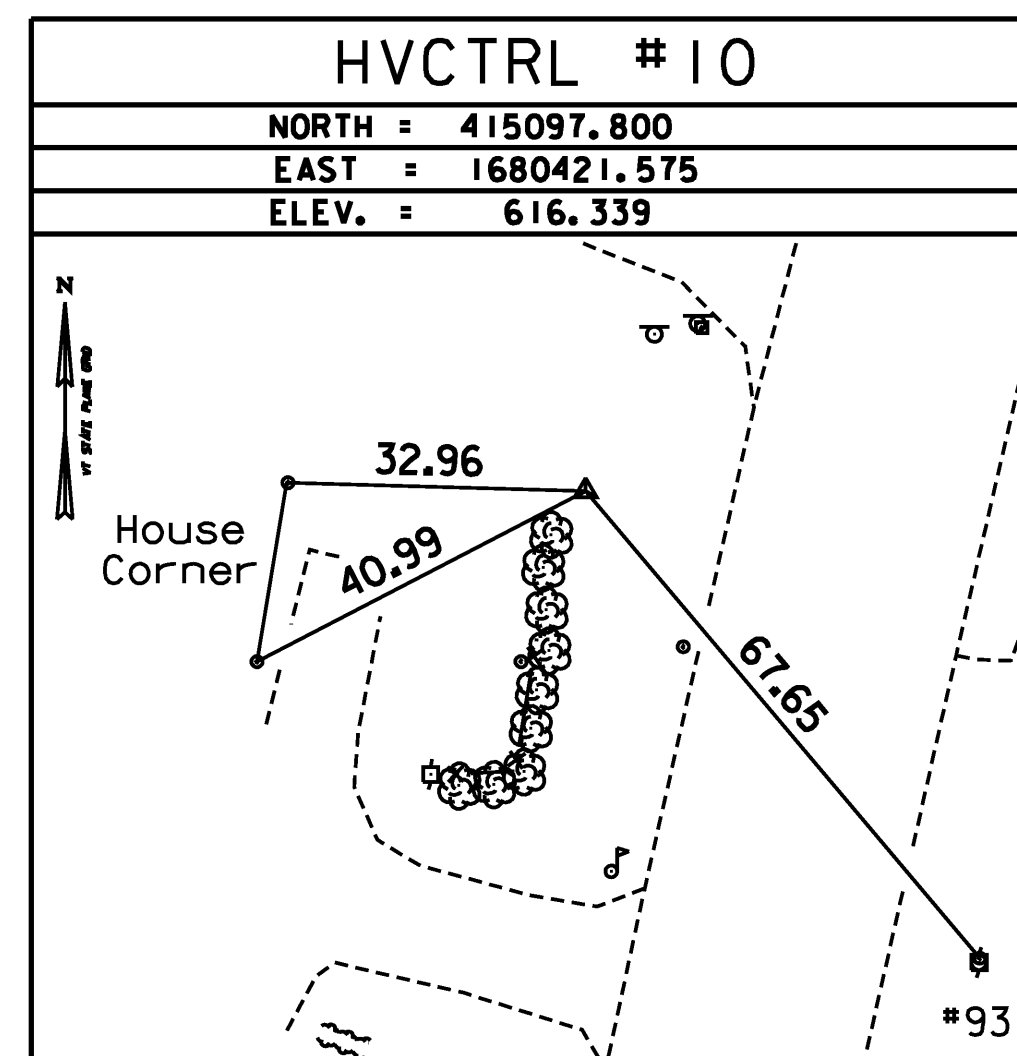
Described by Vermont Geodetic Survey (CHR)
 General Location, Hartford, VT. To reach from the I-91 southbound bridge over I-89 southbound at exit 10 (I-91), go south along I-91 southbound for 1.5 mi. to the site of the mark on the left in the median, about 0.1 mi. southwest of the I-91 southbound Hartford Rest Area. The mark is set 4" below ground surface in the top of a 12" diameter concrete monument. It is 45.6 ft east of and about 3.3 ft higher than the I-91 southbound east edge of pavement, 88.6 ft west northwest of the I-91 northbound west northwest edge of pavement, 327.8 ft south southwest of the center of the east (outlet) end of a 24" diameter concrete culvert, and 1ft west of a fiberglass witness post.

TRAVERSE TIES



• Main Traverse Completed 12/13/06 by R. Gilman P.C. & S. Hisman

TRAVERSE TIES



DATUM	
VERTICAL	NAVD 88
HORIZONTAL	NAD 83(CON)
ADJUSTMENT	COMPASS



PROJECT NAME:	HARTFORD REST AREAS
PROJECT NUMBER:	IM BLDG(10)
FILE NAME:	... \plot files\ x04026pit -t1.dgn
PROJECT LEADER:	JTM
DESIGNED BY:	
HORIZONTAL & VERTICAL CONTROL	
DATE:	5/19/2008
DRAWN BY:	R. BULLOCK
CHECKED BY:	
SHEET	7 OF 70