

INDEX OF SHEETS

SHEET NO.	DESCRIPTION
1	TITLE SHEET
2	LAYOUT SHEET
3-4	QUANTITY SHEETS
5-6	BORING LOG SHEETS
7	HORIZONTAL & VERTICAL CONTROL
8-19	EXISTING CONDITIONS SHEETS
20	EROSION PREVENTION AND SEDIMENT CONTROL NARRATIVE
21-22	EROSION PREVENTION AND SEDIMENT CONTROL DETAILS
23-35	EROSION PREVENTION AND SEDIMENT CONTROL PLANS
36-49	PLAN AND PROFILE SHEETS
50	PUMP STATION SITE PLAN
51-52	SEWER DETAIL SHEETS
53	PUMP STATION DETAILS
54-56	ELECTRICAL SITE PLAN AND DETAILS SHEETS
57	CONSTRUCTION APPROACH SIGNING SHEET
58	TRAFFIC CONTROL NOTES
59-69	TRAFFIC CONTROL SIGNING SHEETS
70	TRAFFIC SIGN SUMMARY SHEET

VAOT STANDARDS

SHEET NO.	DESCRIPTION	DATE
D-20	HIGHWAY CROSSINGS FOR UNDERGROUND UTILITIES	03-03-03
E-100	CONSTRUCTION APPROACH SIGNS	01-02-04
E-100A	SIDE ROAD CONSTRUCTION - APPROACH SIGNS	01-02-04
E-101	CONSTRUCTION SIGN DETAILS	05-30-03
E-102	CONSTRUCTION SIGN DETAILS	06-30-03
E-102A	CONSTRUCTION SIGN DETAILS	05-01-04
E-103	MAINLINE TRAFFIC CONTROL DIVIDED HIGHWAY ONE LANE CLOSED	03-01-04
E-106	TRAFFIC CONTROL MISCELLANEOUS DETAILS	03-01-04
E-107	DELINEATION, BARRICADES AND DETOURS FOR CONSTRUCTION AREAS	06-30-03
E-107A	BREAKAWAY BARRICADE DETAILS	08-08-95
E-108	CONSTRUCTION ZONE LONGITUDINAL DROP OFFS	08-18-95
E-110	MAJOR MAINTENANCE OPERATION LANE CLOSURE	08-08-95
E-111	MINOR MAINTENANCE OPERATIONS	03-11-97
G-18	PRECAST CONCRETE TEMPORARY TRAFFIC BARRIER	06-01-94

STATE OF VERMONT AGENCY OF TRANSPORTATION



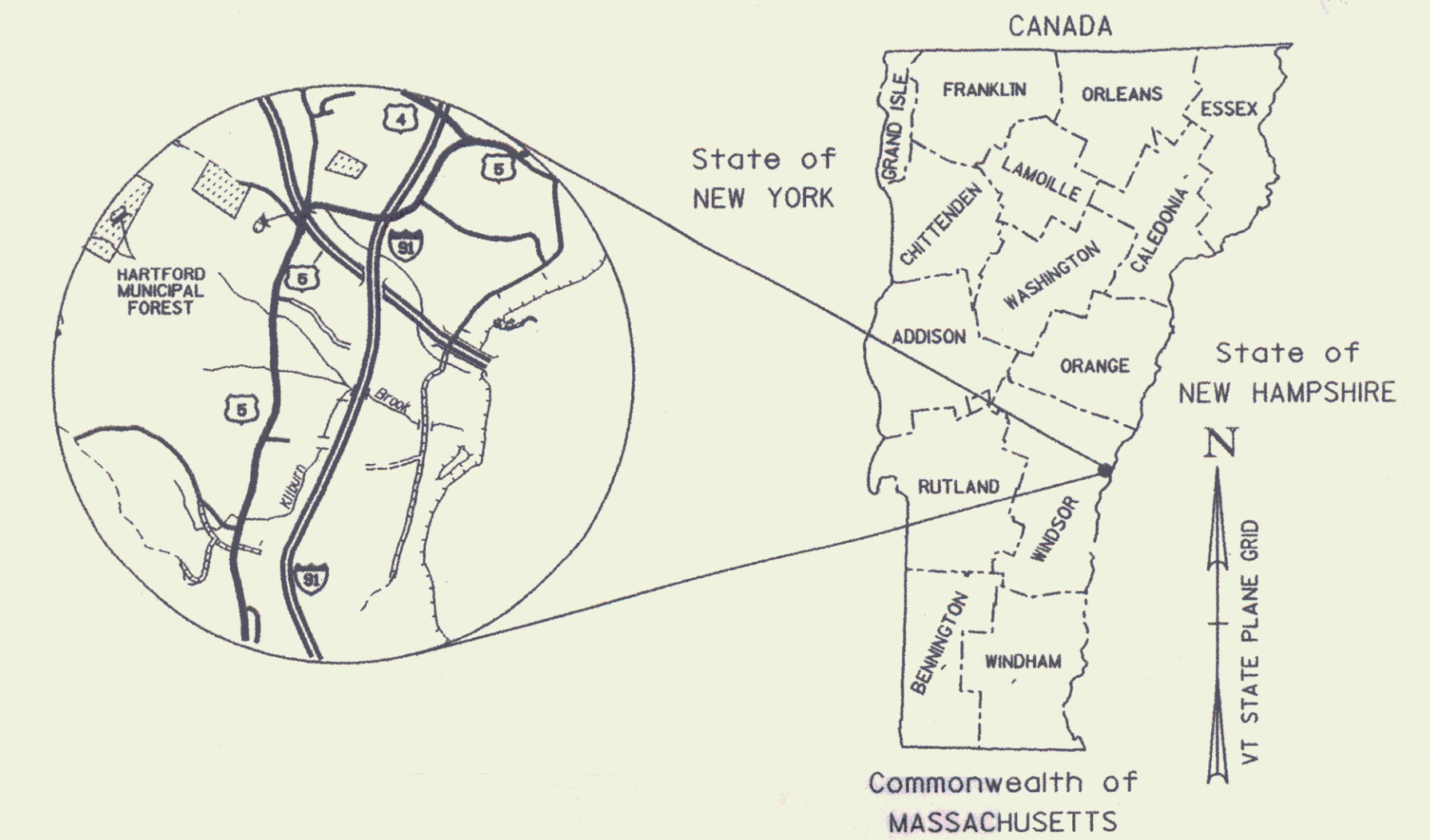
PROPOSED IMPROVEMENT

TOWN OF HARTFORD
COUNTY OF WINDSOR

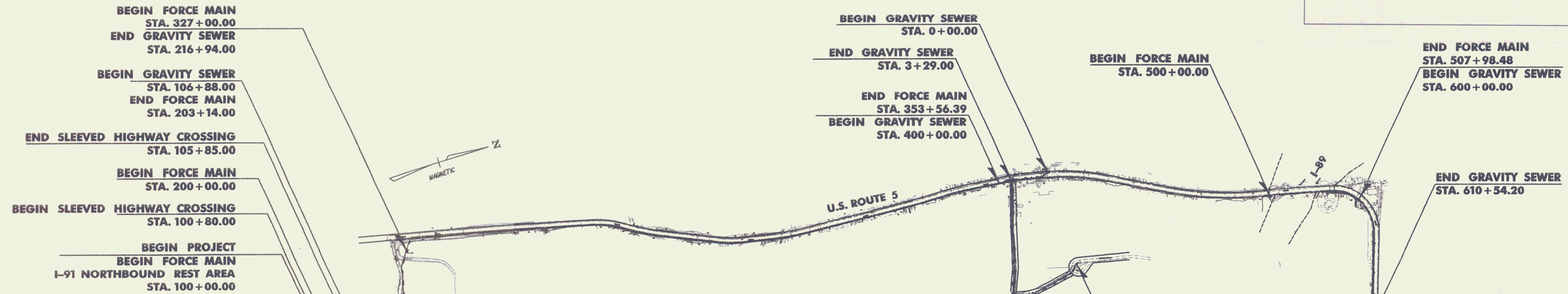
I-91 HARTFORD REST AREA SEWER SERVICE

THIS PROJECT IS LOCATED IN THE TOWN OF HARTFORD ON U.S. ROUTE 5
WORK TO BE PERFORMED UNDER THIS PROJECT
INCLUDES CONSTRUCTION OF GRAVITY AND PRESSURE SEWERS,
PUMP STATIONS, AND A SLEEVED HIGHWAY CROSSING

LENGTH OF PROJECT:
SLEEVED HIGHWAY CROSSING = 485 LF
FORCE MAIN = 6,672 LF
GRAVITY SEWER = 4,532 LF
TOTAL LENGTH = 11,689 LF



RECORD PLANS	
CONTRACTOR:	J.P. SICARD - BARTON, VT
RESIDENT ENGINEER:	CHRIS BARKER
CONSTRUCTION BEGAN:	AUGUST 19, 2008
CONSTRUCTION COMPLETE:	OCTOBER 26, 2010
RECORD PLANS BY:	CHRIS BARKER & JENNA HYDE
I HEREBY CERTIFY THAT ALL THE CONSTRUCTION REQUIRED BY THIS SET OF DRAWINGS HAS BEEN ACCOMPLISHED AS INDICATED HEREIN.	
BY:	<i>[Signature]</i> RESIDENT ENGINEER
DATE:	10/29/12
NOTE: Any further information concerning final quantities, amounts or other details relative to this project may be found at Central Files in the electronic archives.	

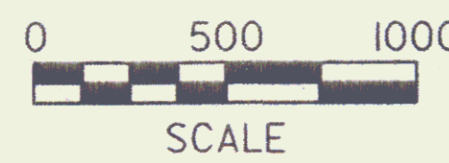


CONVENTIONAL SYMBOLS

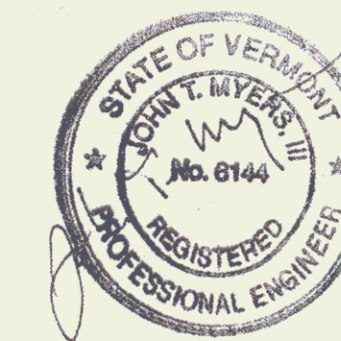
COUNTY LINE	
TOWN LINE	
LIMITS OF ACCESS	
POINT OF ACCESS	
FENCE LINE	
STONE WALL	
TRAVELED WAY	
GUARD RAIL	
RAILROAD	
SURVEY LINE	
CULVERT	
POWER POLE	
TELEPHONE POLE	
TREES	
CONTROL OF ACCESS	
PROPERTY LINE	
R.O.W. TAKING LINE	
SLOPE RIGHTS	
TOP OF CUT	
TOE OF SLOPE	

SURVEYED BY : VTRANS
SURVEYED DATE : 2007

DATUM
VERTICAL: NAVD 88
HORIZONTAL: NAD 83 (CON)



THESE PLANS ARE SUBJECT TO SUCH ENGINEERING CHANGES AS MAY BE REQUIRED BY THE FEDERAL HIGHWAY ADMINISTRATION OR THE DIRECTOR OF PROGRAM DEVELOPMENT.
CONSTRUCTION IS TO BE CARRIED ON IN ACCORDANCE WITH THESE PLANS AND THE STANDARD SPECIFICATIONS FOR CONSTRUCTION DATED 2006, AS APPROVED BY THE FEDERAL HIGHWAY ADMINISTRATION ON JUNE 15, 2006 FOR USE ON THIS PROJECT, INCLUDING ALL SUBSEQUENT REVISIONS AND SUCH REVISED SPECIFICATIONS AND SPECIAL PROVISIONS AS ARE INCORPORATED IN THESE PLANS.



Stantec Consulting Services Inc.
55 Green Mountain Drive
South Burlington VT U.S.A.
05403
Tel. 802.864.0223
Fax. 802.864.0665
www.stantec.com

DEPARTMENT OF TRANSPORTATION FEDERAL HIGHWAY ADMINISTRATOR	
APPROVED <i>[Signature]</i>	DATE 5/29/08
DIRECTOR OF PROGRAM DEVELOPMENT	
APPROVED <i>[Signature]</i>	DATE 5-19-08
PROJECT MANAGER :	
PROJECT NAME :	HARTFORD REST AREAS
PROJECT NUMBER :	1M BLDG (10)
SHEET 1 OF 70 SHEETS	