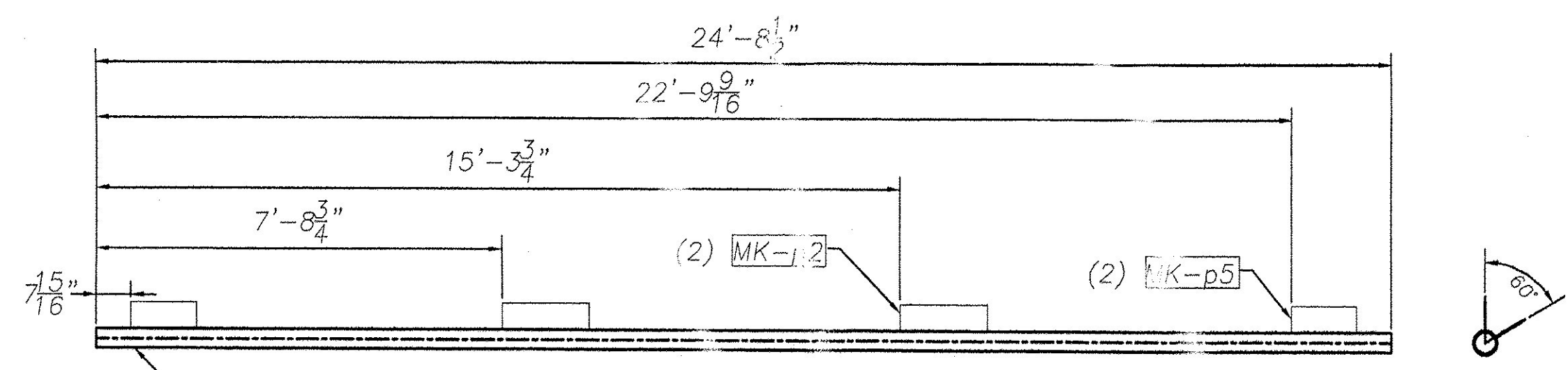
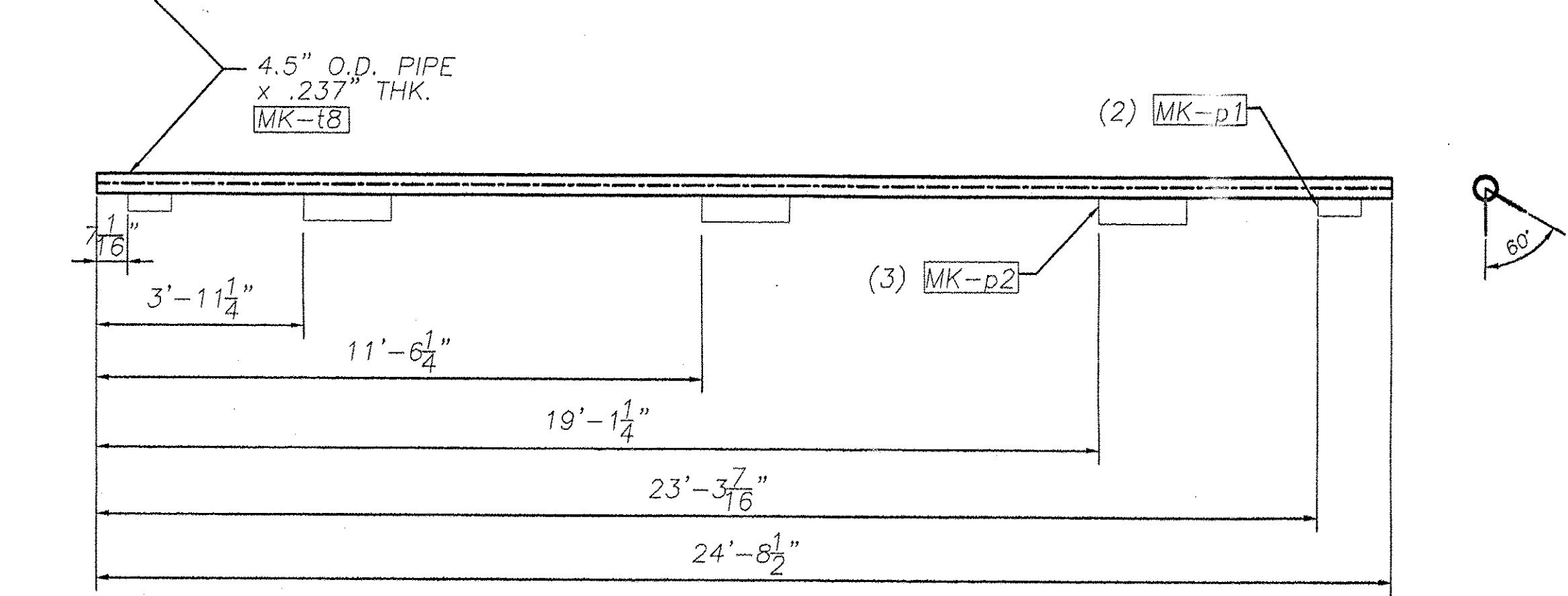


MK-RA7

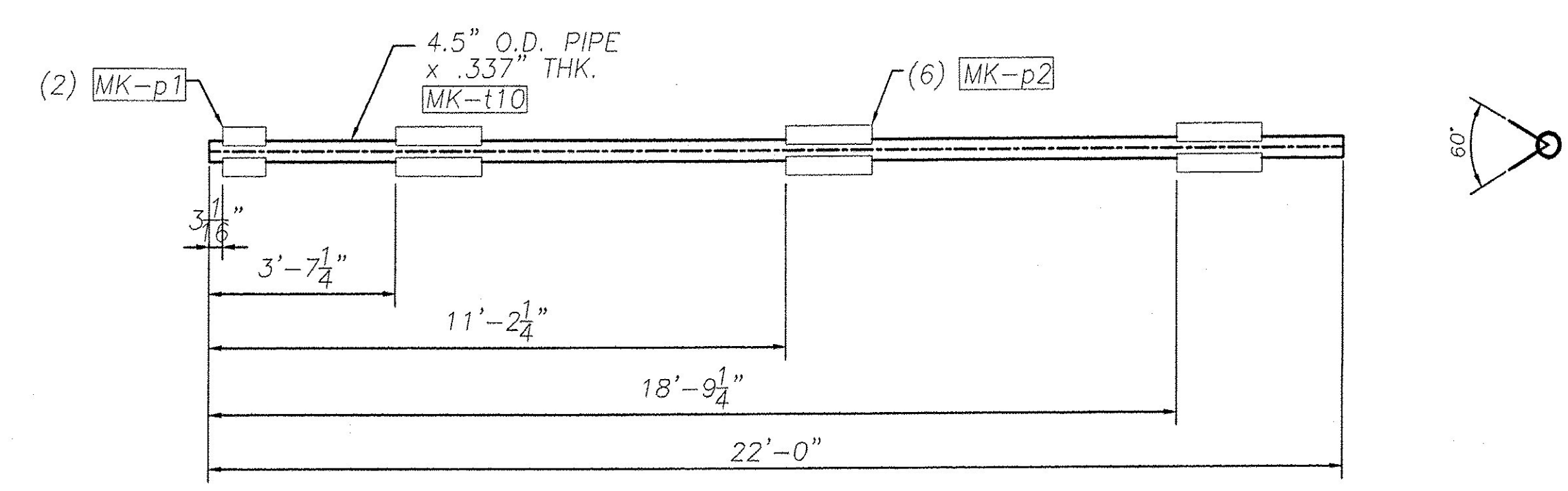


MK-RA8

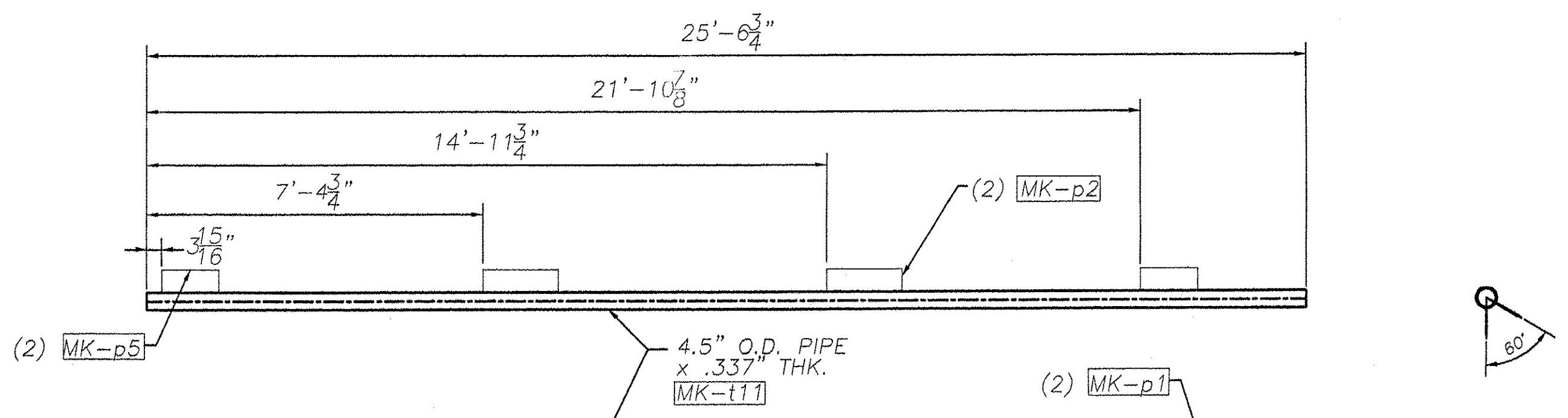


MK-RA9

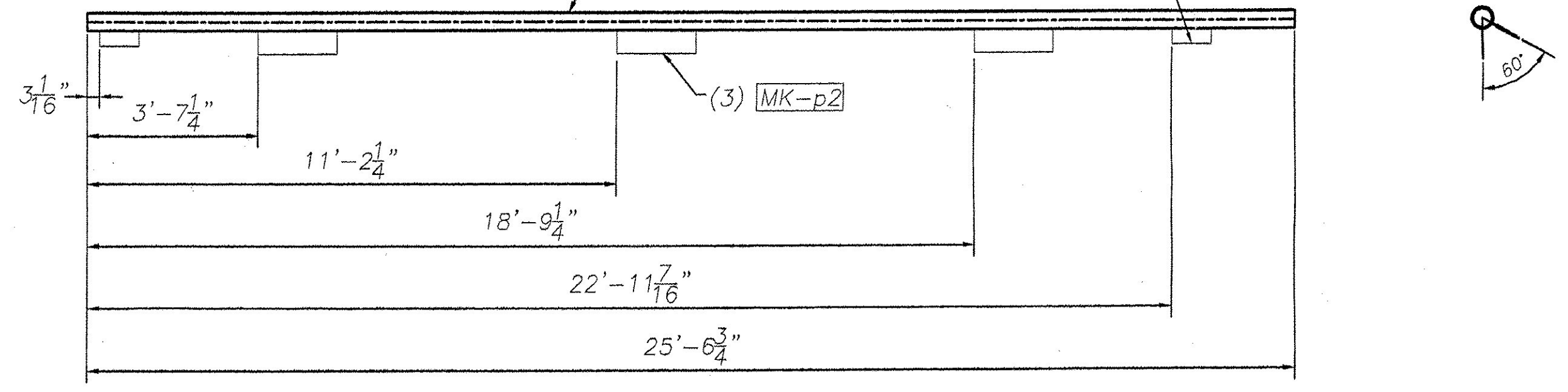
TRUSS 3



MK-RA10



MK-RA11



MK-RA12

TRUSS 4

REVISIONS		
No.	Remarks	Date
0	Initial submittal	

Handwritten signature

RECEIVED
 OK'D BY _____ OK'D BY _____
 SEP 05 2006
 REQUESTANT _____ APPROVED _____
 BY *WJ* DATE 9/6/06



HIGHWAY SAFETY CORP.
 GLASTONBURY, CT

TRI-CHORD SIGN STRUCTURE
 I-89 SB EXIT 14W RAMP "C"
 CHITTENDEN COUNTY, VERMONT
 CITY OF SOUTH BURLINGTON
 PROJECT No. ACIM 089-3(37)

DESIGN: MHM
 CHECKED: _____
 DATE: 8/29/06
 SCALE: NTS
 HSD REFERENCE NO.: 1557
 GENERAL CONTRACTOR: _____
 SUB CONTRACTOR: F.R. LAFAYETTE
 SHEET NO.: 7 of 10