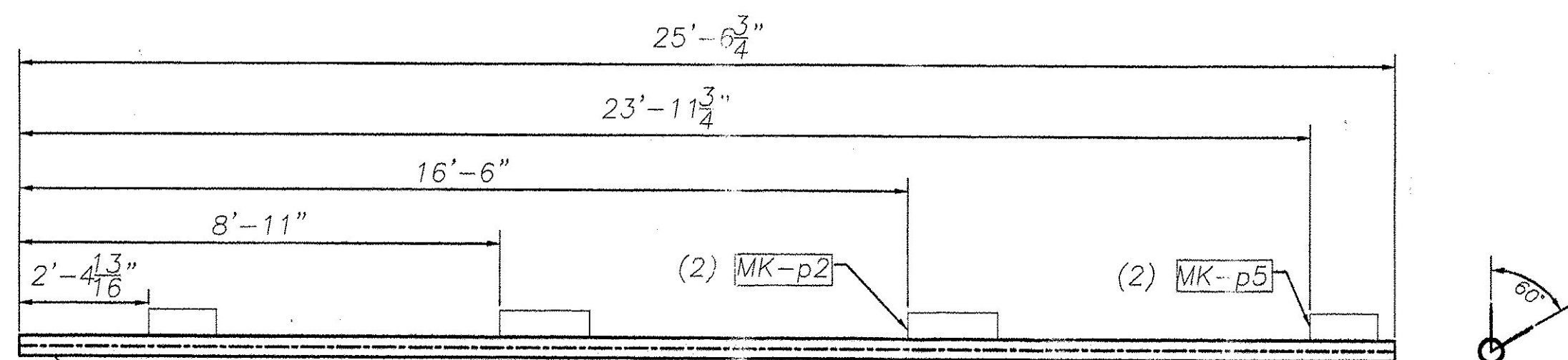
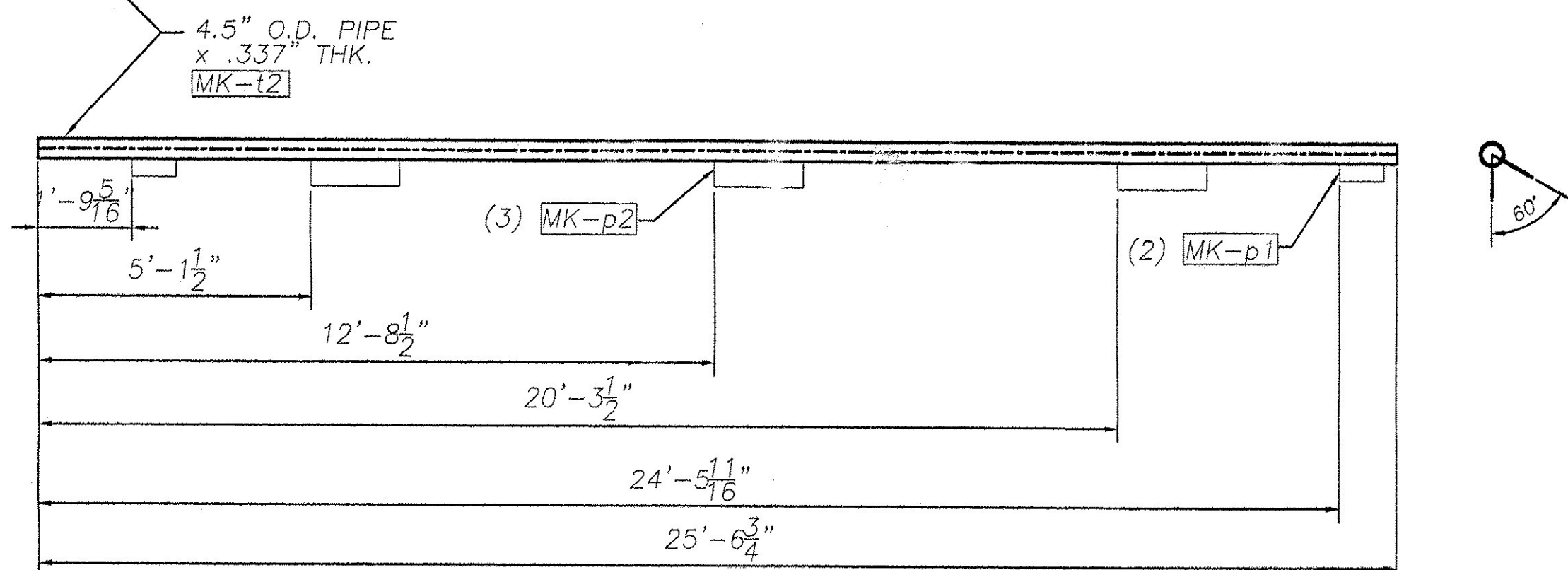


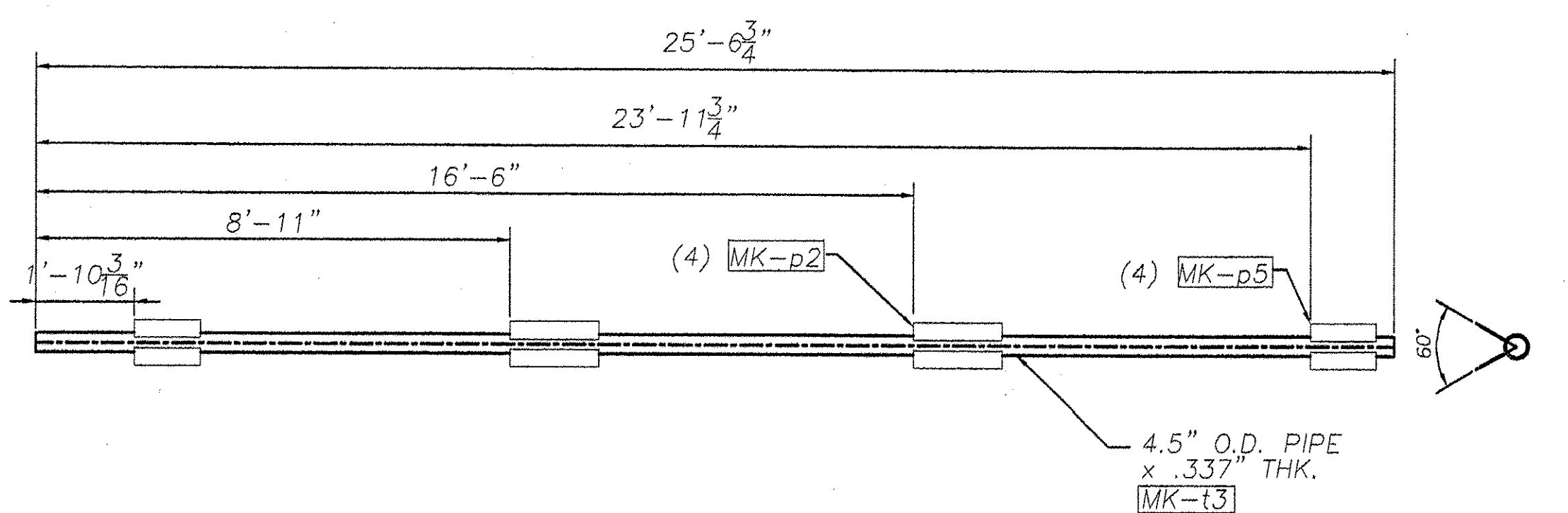
MK-RA1



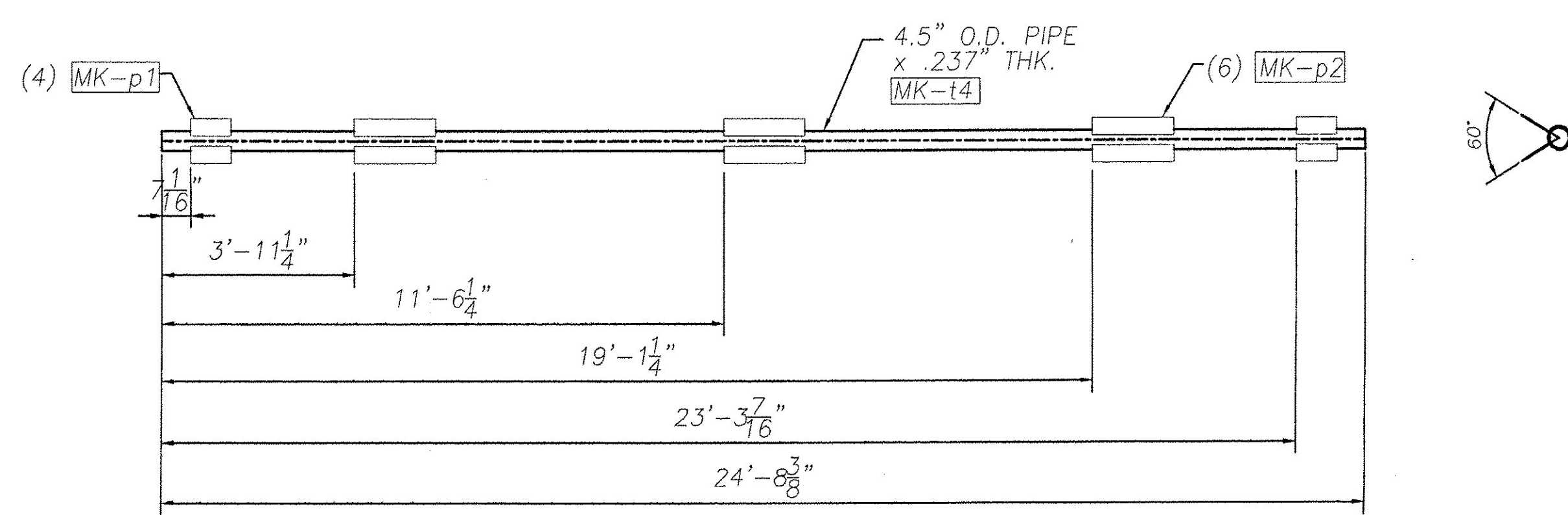
MK-RA2



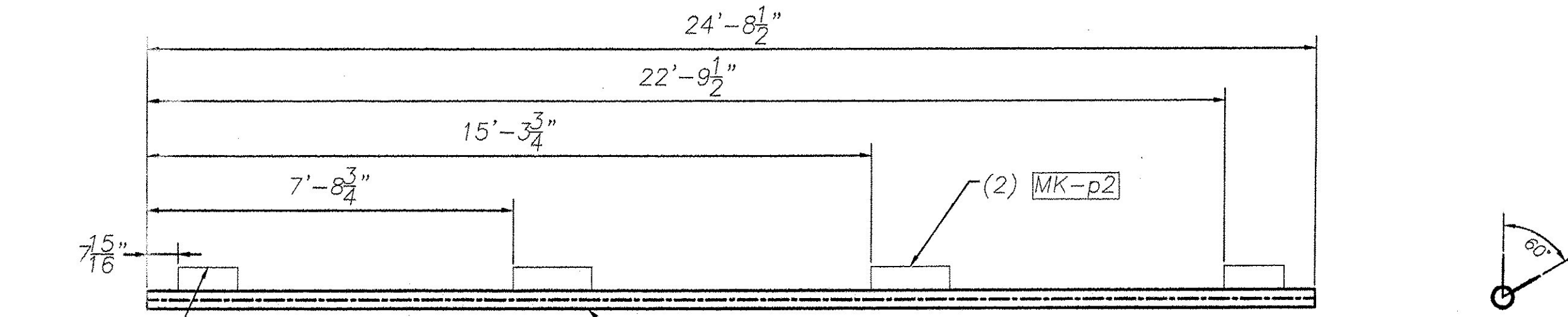
MK-RA3



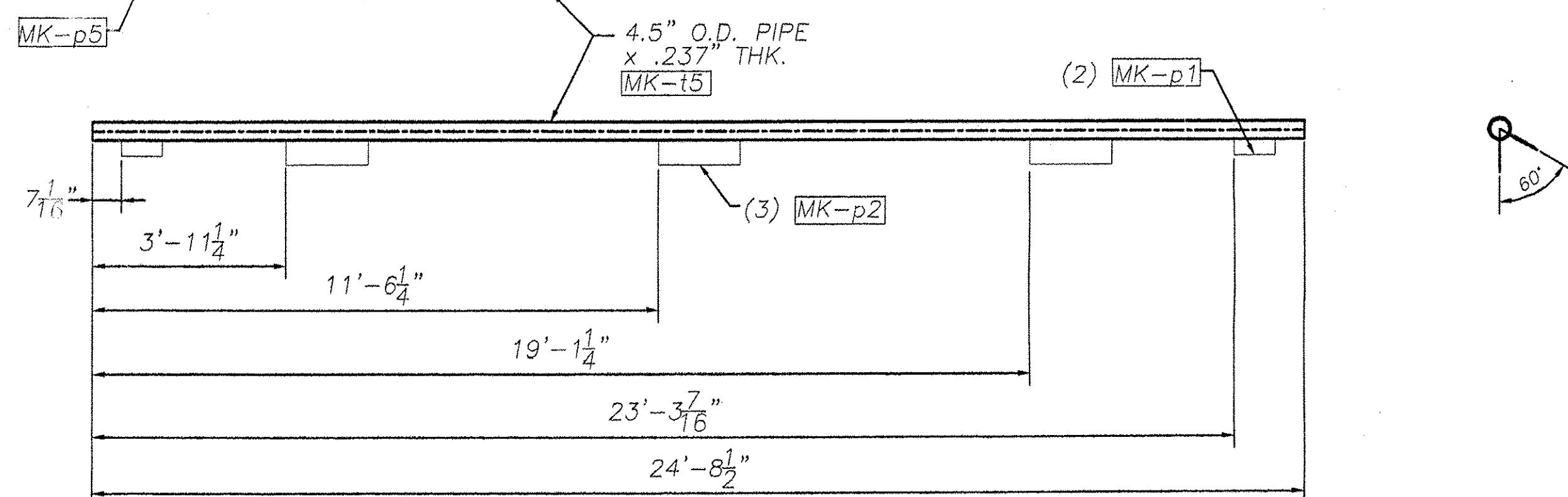
TRUSS 1



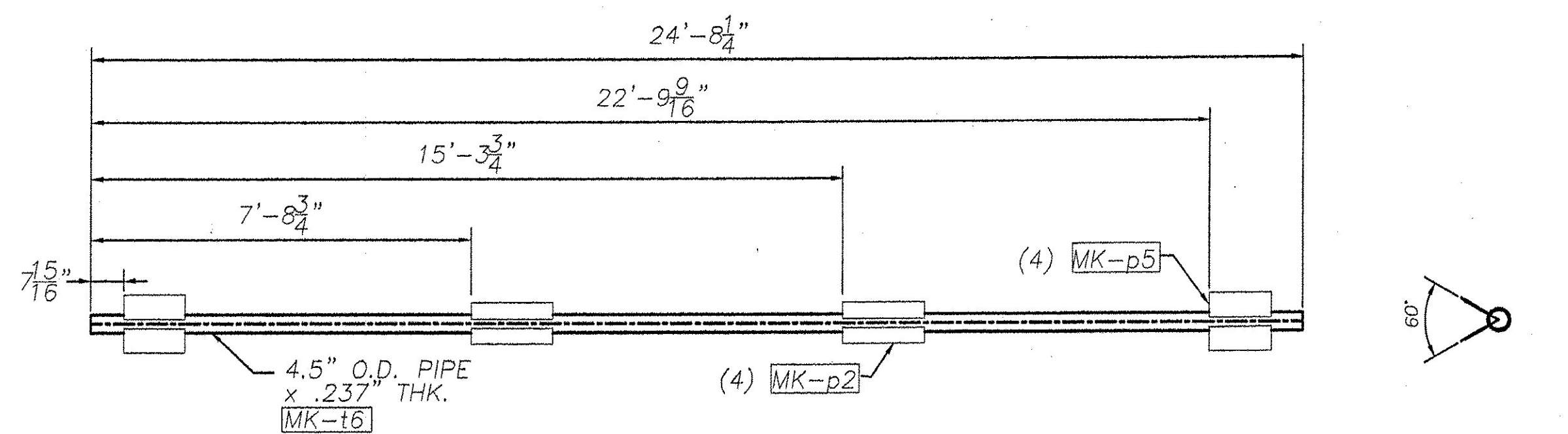
MK-RA4



MK-RA5



MK-RA6



TRUSS 2

REVISIONS		
No.	Remarks	Date
0	Initial submittal	

*PLA. B. O'Leary*

RECEIVED  
 OK'D BY \_\_\_\_\_ OK'D BY \_\_\_\_\_  
 SEP 05 2006  
 RESUBMIT \_\_\_\_\_ APPROVED \_\_\_\_\_  
 BY *WJ* DATE *9/6/06*

**HIGHWAY SAFETY CORP.**  
 GLASTONBURY, CT

TRI-CHORD SIGN STRUCTURE  
 I-89 SB EXIT 14W RAMP "C"  
 CHITTENDEN COUNTY, VERMONT  
 CITY OF SOUTH BURLINGTON  
 PROJECT No. ACIM 089-3(37)

DRIVER: MHM  
 CHECKED: \_\_\_\_\_  
 DATE: 8/29/06  
 SCALE: NTS  
 HNS REFERENCE NO.: 1557  
 SHEET NO.: 6 of 10

GENERAL CONTRACTOR: \_\_\_\_\_  
 SUB CONTRACTOR: F.R. LAFAYETTE

