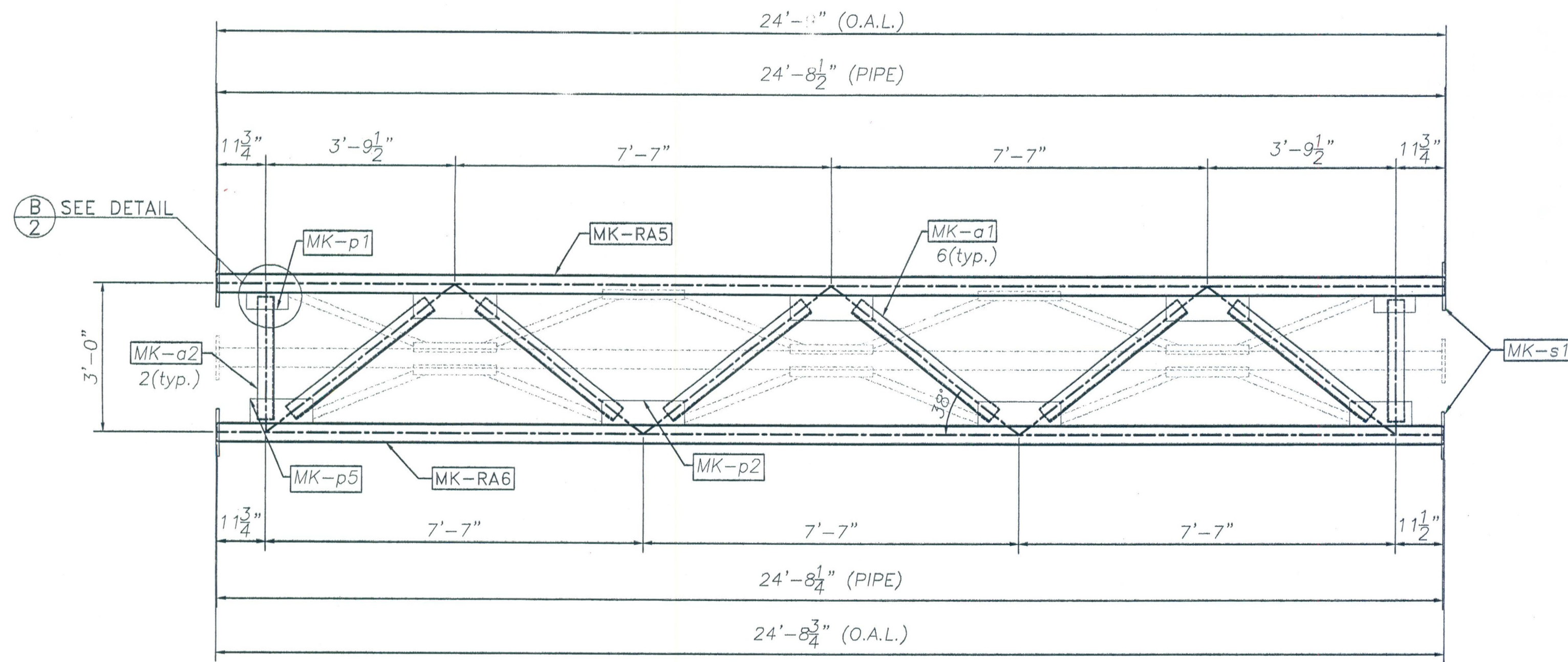
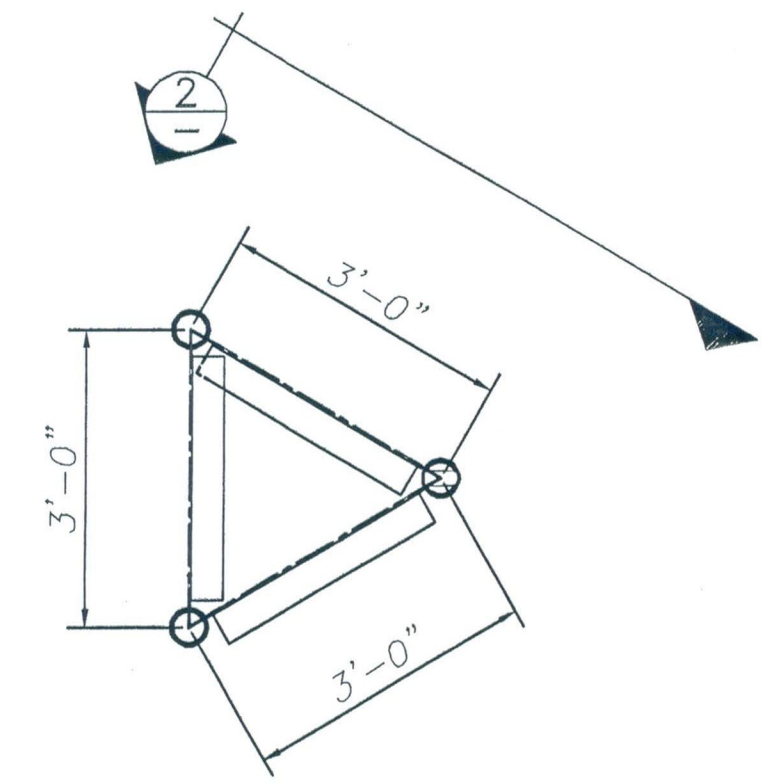


(A) VIEW

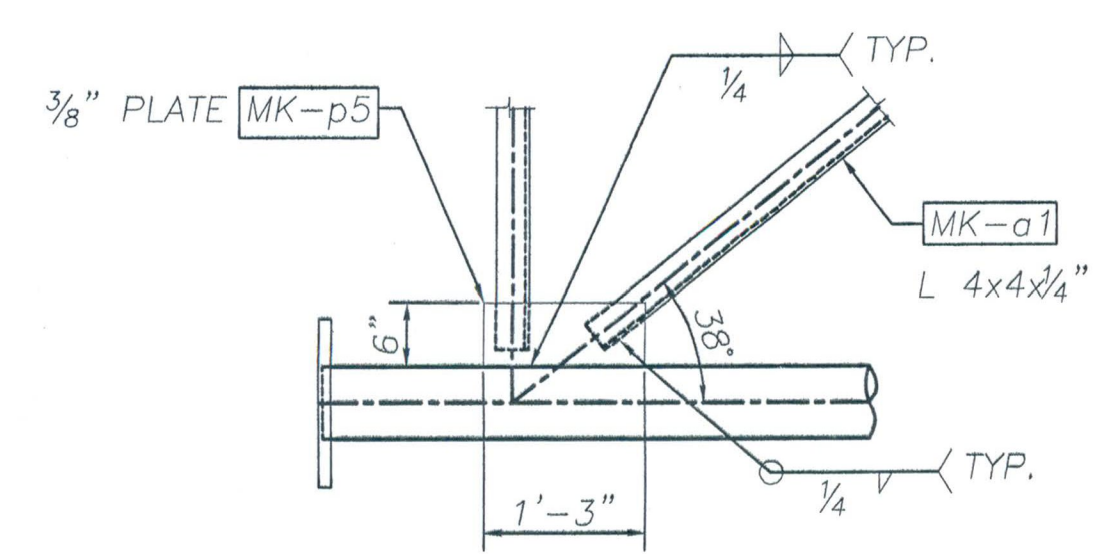


FRONT VIEW
TRUSS 2

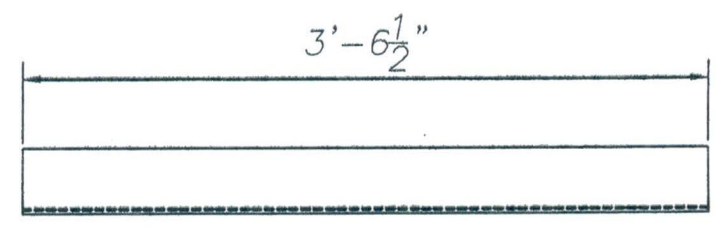
STAMP T2 IN ONE FLANGE



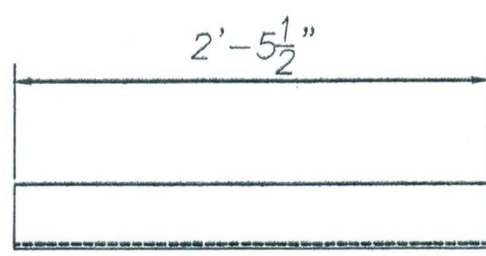
SIDE VIEW



DETAIL "D"



MK-a1
L4x4x.25"



MK-a2
L4x4x.25"

- NOTE:**
- STRUCTURE DESIGNED IN ACCORDANCE WITH LATEST EDITION AASHTO STANDARD SPECIFICATIONS FOR STRUCTURAL SUPPORTS FOR HIGHWAY SIGNS, LUMINARIES AND TRAFFIC SIGNALS.
 - ALL HOLES FOR HIGH STRENGTH FASTENERS SHALL BE DRILLED OR SUB-PUNCHED FULL SIZE. SLOTTED HOLES AND/OR VENT OR ACCESS HOLES MAY BE CUT WITH MECHANICALLY GUIDED PLASMA OR FLAME TORCH.
 - GRIND SHARP CORNERS OF ALL PLATES TO A 1/16" MIN. RADIUS PRIOR TO GALVANIZING.
 - ALL WELDING SHALL BE PERFORMED BY QUALIFIED WELDERS IN ACCORDANCE WITH AWS D1.1.
 - ALL STEEL PLATES FOR STRUCTURAL COMPONENTS SHALL BE ASTM A709 GR. 50.
 - STEEL PLATES AND SHAPES FOR NON-STRUCTURAL COMPONENTS SHALL BE ASTM A709 GR. 36.
 - STEEL PIPES FOR STRUCTURAL MEMBERS SHALL HAVE MINIMUM YIELD OF 42 ksi AND SHALL CONFORM TO ONE OF THE FOLLOWING GRADES: ASTM A500 GR. B, ~~OR API 5L X~~.
 - UNLESS OTHERWISE NOTED, ALL BOLTS FOR STRUCTURAL CONNECTIONS SHALL BE M164 TYPE 1 (A325).
 - GALVANIZED U-BOLTS FOR CONNECTION OF SIGN HANGER BEAMS TO TRUSS SHALL BE ASTM F-1554 GR. 36.
 - ALL STRUCTURAL STEEL SHALL BE HOT-DIPPED GALVANIZED AFTER FABRICATION IN ACCORDANCE WITH AASHTO M111 (ASTM A123).
 - ALL HARDWARE, UNLESS OTHERWISE NOTED, SHALL BE HOT-DIPPED GALVANIZED PER AASHTO M232 (ASTM A153).
 - ANCHOR HARDWARE SHALL BE STAINLESS STEEL AND MEET REQUIREMENTS OF VAOT STANDARD SPECIFICATION 714.09.
 - CONCRETE AND REBAR SHOWN IN FOOTING DESIGN TO BE FURNISHED BY OTHERS.
 - FOUNDATION DESIGN BASED ON USE OF 3000 psi MINIMUM CONCRETE.
 - SPACE BETWEEN THE TOP OF CONCRETE AND THE BOTTOM OF STEEL BASE PLATE SHALL BE FILLED WITH TYPE IV MORTAR AFTER LEVELING.
 - BOLTS INSTALLED IN STRUCTURAL CONNECTIONS SHALL BE PROTECTED AND TENSIONED PER APPLICABLE PROVISIONS OF VAOT STANDARD SPECIFICATIONS SECTION 506.

REVISIONS		
No.	Remarks	Date
0	Initial submittal	

P.R. Co.

RECEIVED
 OK'D BY: _____ OK'D BY: _____
 SEP 05 2006
 RESUBMIT: _____ APPROVED: *As Not'd*
 BY: *sl* DATE: 9/1/06

HIGHWAY SAFETY CORP.
 GLASTONBURY, CT

TRI-CHORD SIGN STRUCTURE
 I-89 SB EXIT 14W RAMP "C"
 CHITTENDEN COUNTY, VERMONT
 CITY OF SOUTH BURLINGTON
 PROJECT No. ACIM 089-3(37)

DATE: 8/29/06
 SCALE: N.T.S.
 SHEET NO.: 1557
 REVISION: 0
 SHEET NO.: 3 of 10

GENERAL CONTRACTOR: F.R. LAFAYETTE

