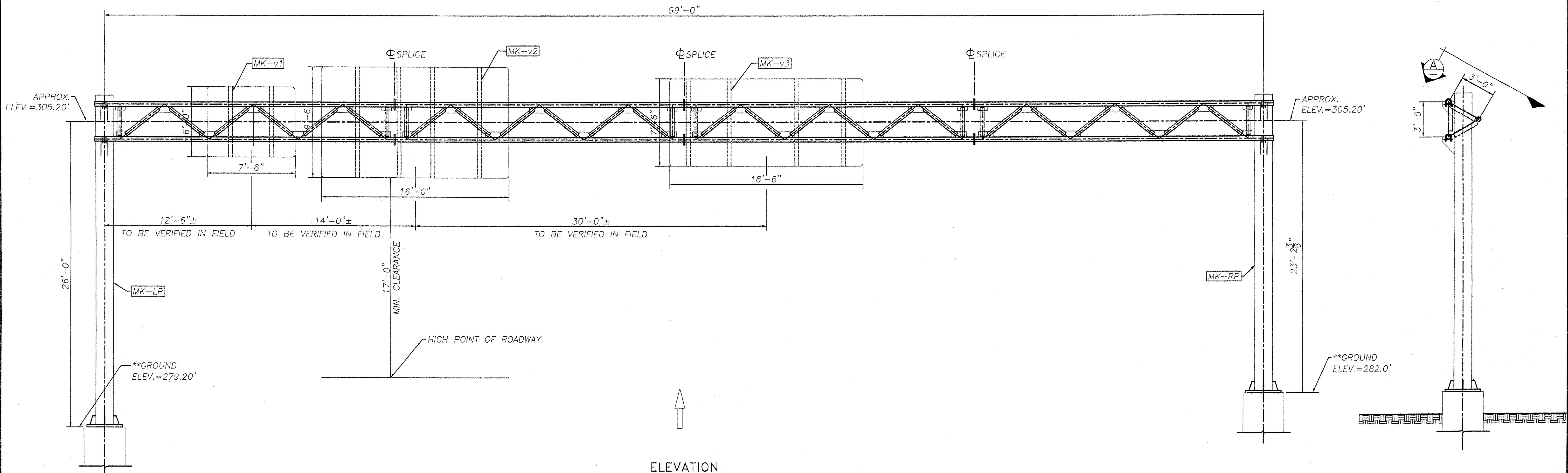
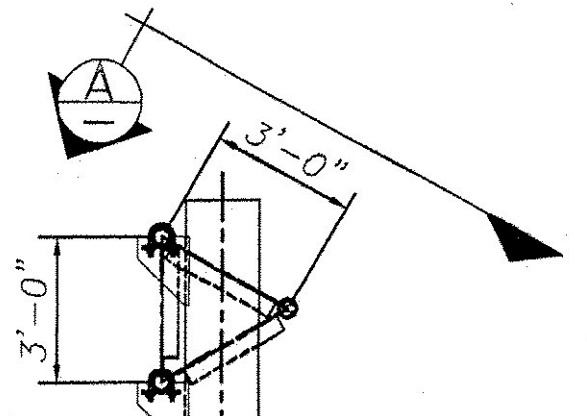


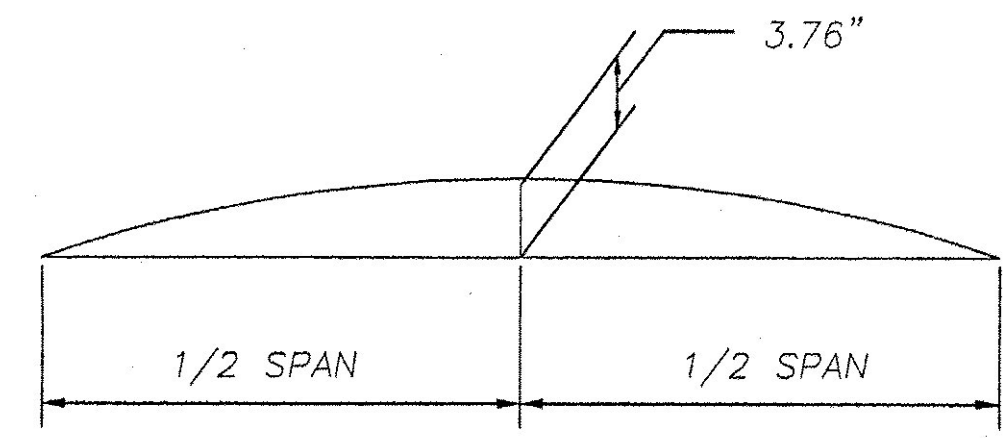
SECTION A



ELEVATION  
OVERHEAD TRAFFIC SIGN SUPPORT STA. 56+90  
LOOKING AT FACE OF SIGN  
(OUT OF PLANE CHORDS NOT SHOWN FOR CLARITY)



SIDE VIEW



CAMBER DIAGRAM

**NOTE:**  
CAMBER WILL BE ACHIEVED BY SHORTENING LOWER CHORD PIPES BY AN AMOUNT SUCH THAT POSITIVE UPWARD DEFLECTION IS PRODUCED WHEN TRUSSES ARE BROUGHT TOGETHER AT SPLICES.

(\*\*) GROUND ELEVATION IS PROVIDED IN CONTRACT DRAWINGS, TOP OF CONCRETE ELEVATION TO BE VERIFIED AND ADJUST POST HEIGHTS AS NEEDED PRIOR TO FABRICATION TO MAINTAIN MINIMUM SIGN CLEARANCE.



REVISIONS		
No.	Remarks	Date
0	Initial submittal	

RECEIVED  
 SEP 05 2006  
 BY: *WJ* DATE: 9/6/06

**HIGHWAY SAFETY CORP.**  
 GLASTONBURY, CT

TRI-CHORD SIGN STRUCTURE  
 I-89 SB EXIT 14W RAMP "C"  
 CHITTENDEN COUNTY, VERMONT  
 CITY OF SOUTH BURLINGTON  
 PROJECT No. ACIM 089-3(37)

DESIGNED: MHM  
 CHECKED: \_\_\_\_\_  
 DATE: 8/29/06  
 SCALE: N.T.S.  
 NO. REVISIONS: 1557  
 SHEET NO.: 1 of 10

GENERAL CONTRACTOR: F.R. LAFAYETTE

*Handwritten signature/initials*