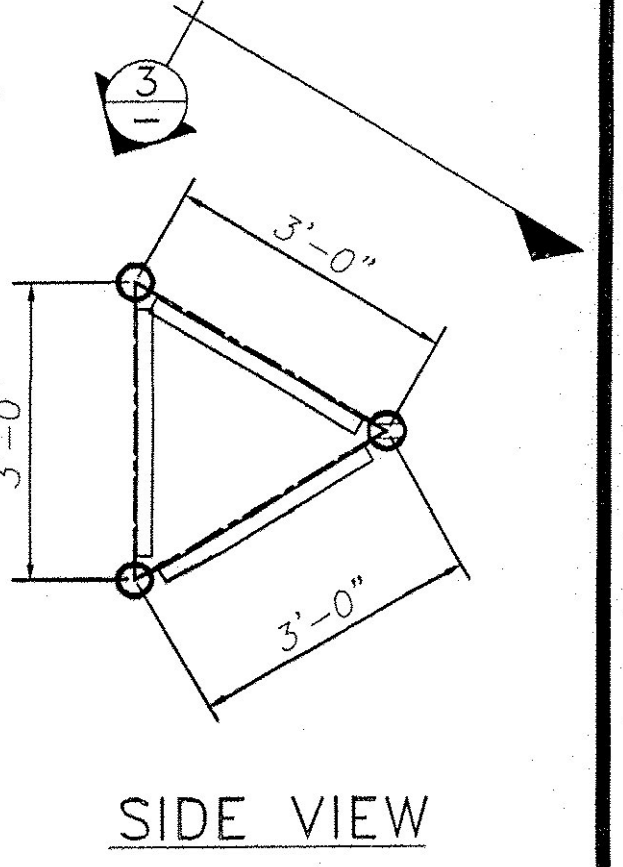
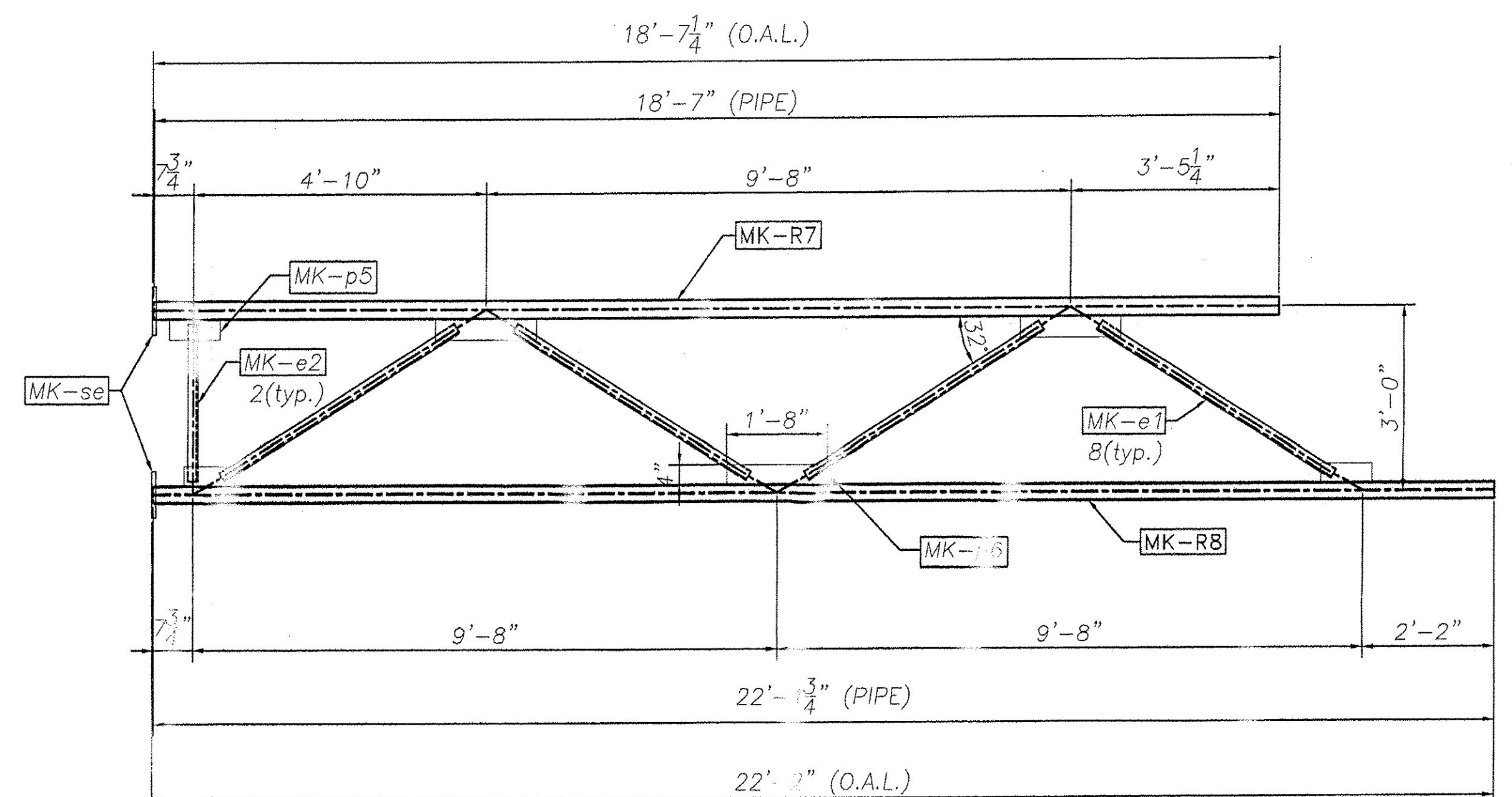
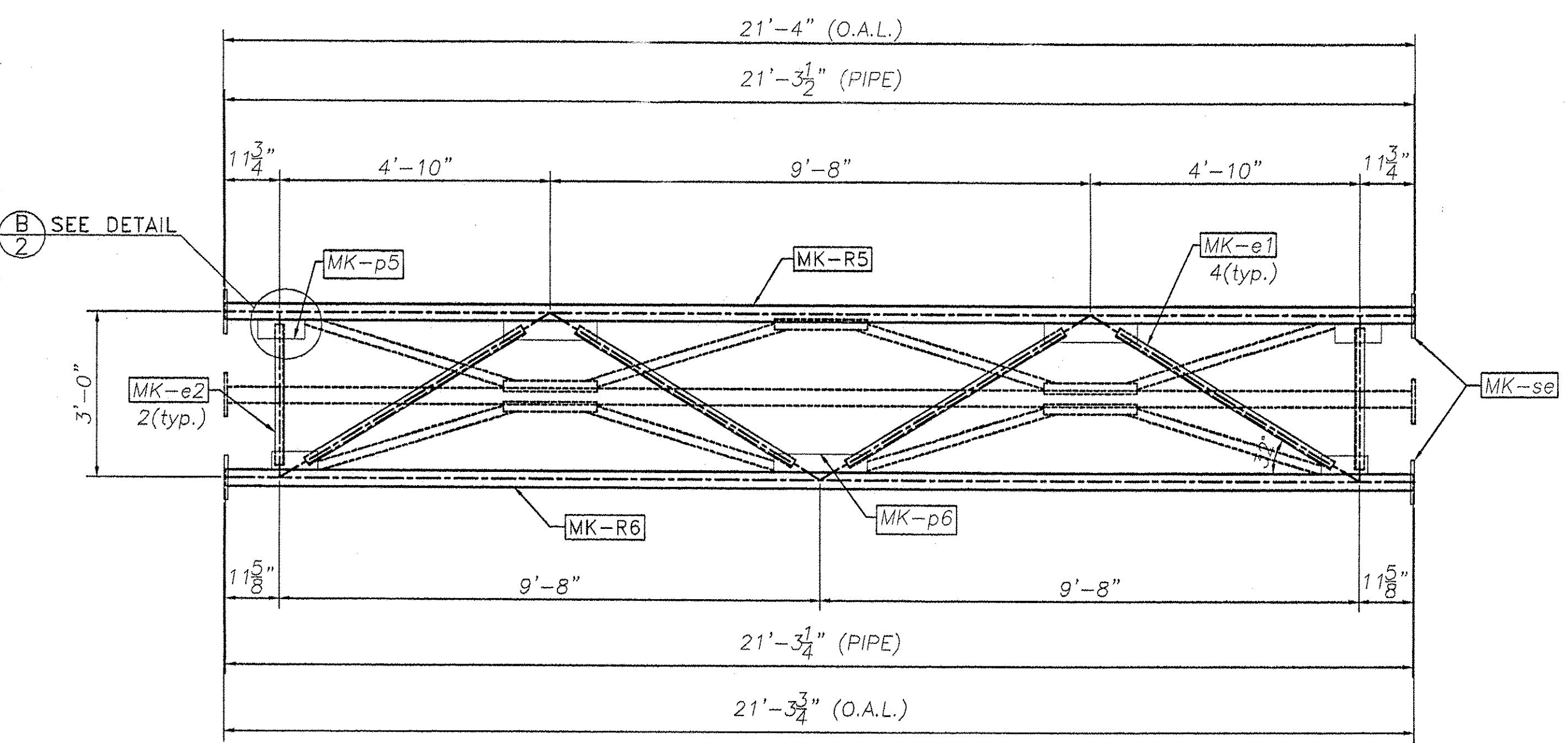


2 VIEW

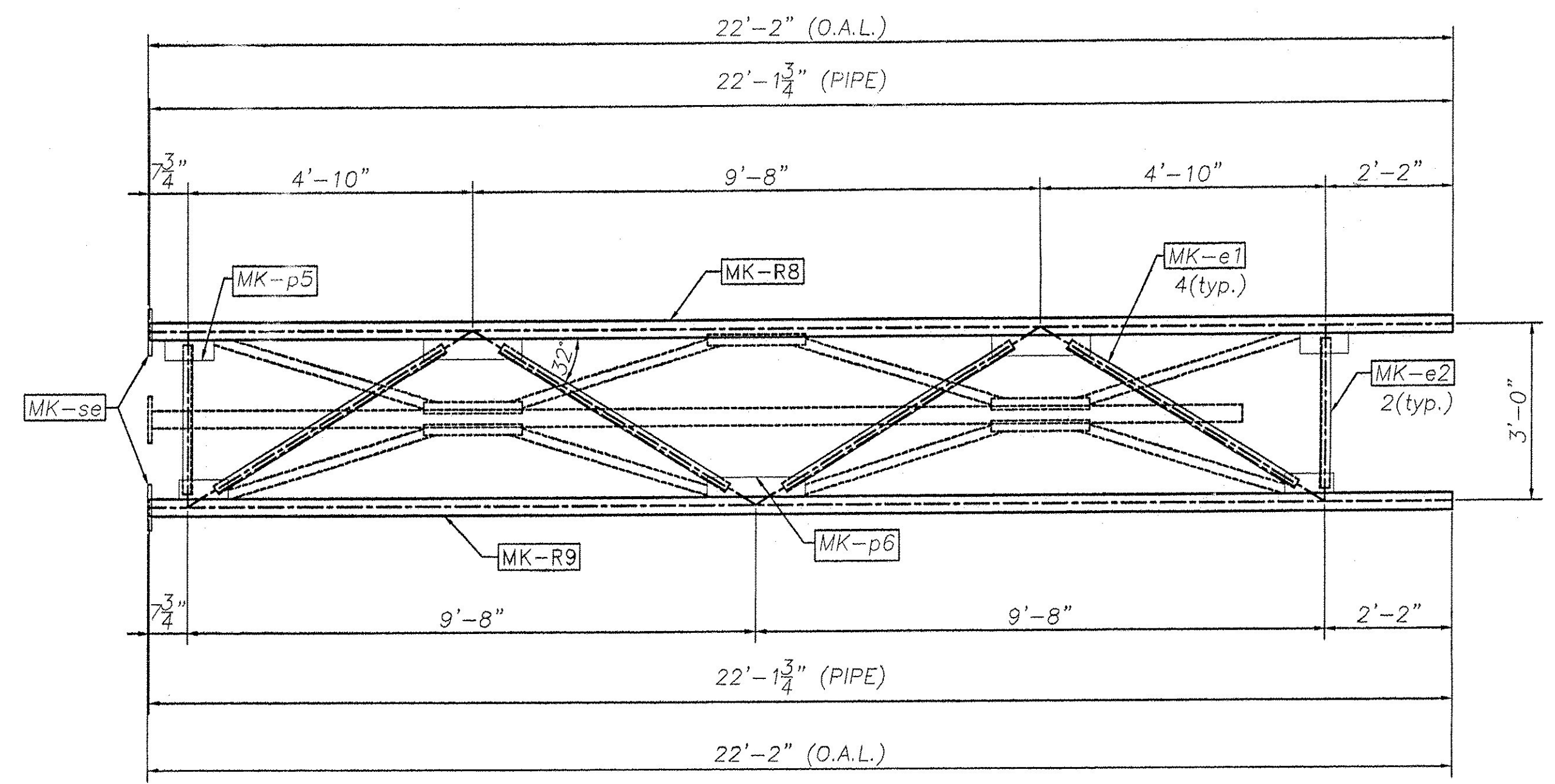


3 VIEW



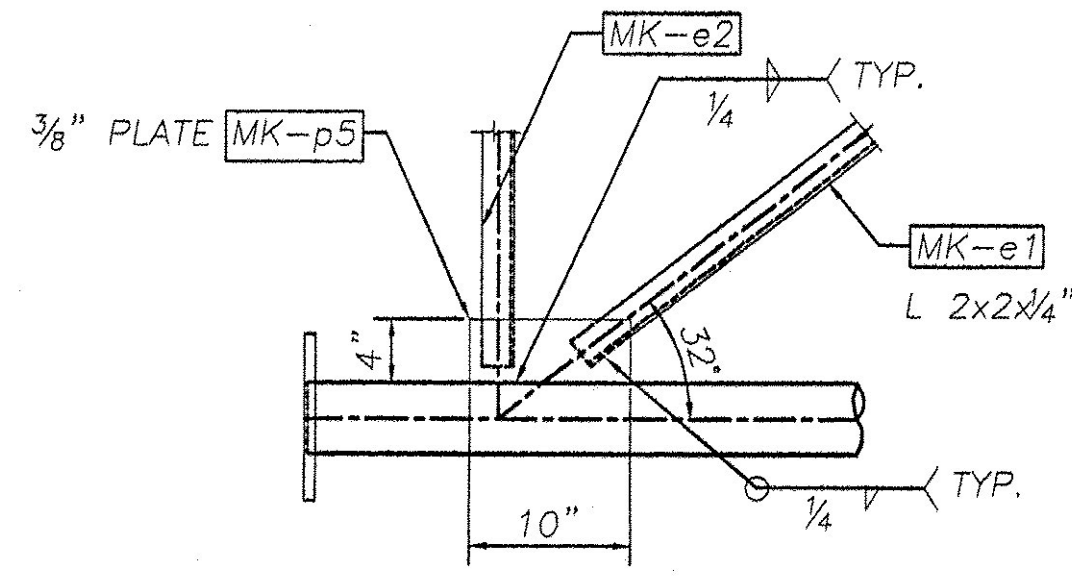
FRONT VIEW  
TRUSS 6

STAMP TR6 IN ONE FLANGE

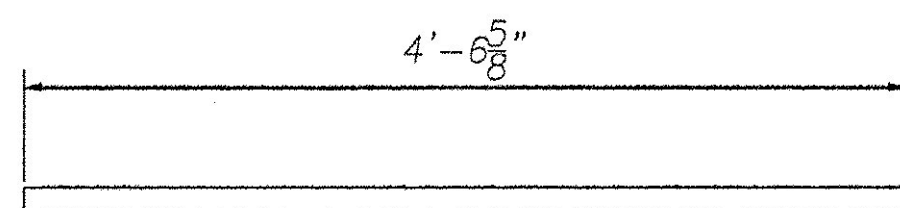


FRONT VIEW  
TRUSS 7

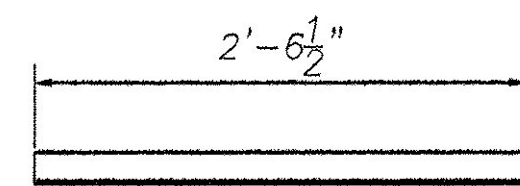
STAMP TR7 IN ONE FLANGE



DETAIL "D"



MK-e1  
L2x2x.25"



MK-e2  
L2x2x.25"

REVISIONS		
No.	Remarks	Date
0	Initial submittal	

RECEIVED  
 OK'D BY \_\_\_\_\_  
 SEP 05 2005  
 RESUBMIT \_\_\_\_\_ APPROVED \_\_\_\_\_  
 BY WY/SY DATE 9/6/06

*W.P. Co.*



**HIGHWAY SAFETY CORP.**  
 GLASTONBURY, CT

TRI-CHORD SIGN STRUCTURE  
 I-89 SB EXIT 14W RAMP "C"  
 CHITTENDEN COUNTY, VERMONT  
 CITY OF SOUTH BURLINGTON  
 PROJECT No. ACIM 089-3(37)

DATE 8/29/06  
 SCALE N.T.S.  
 SHEET NO. 1558  
 REVISION 0  
 SHEET NO. 3 of 8

GENERAL CONTRACTOR  
 SUB CONTRACTOR F.R. LAFAYETTE