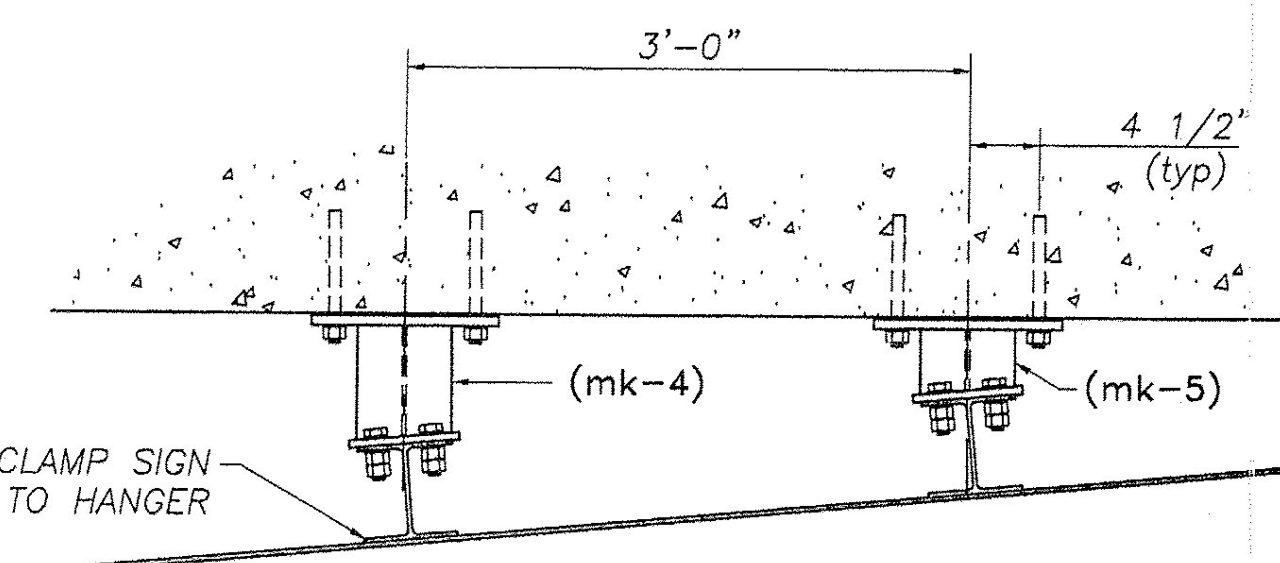
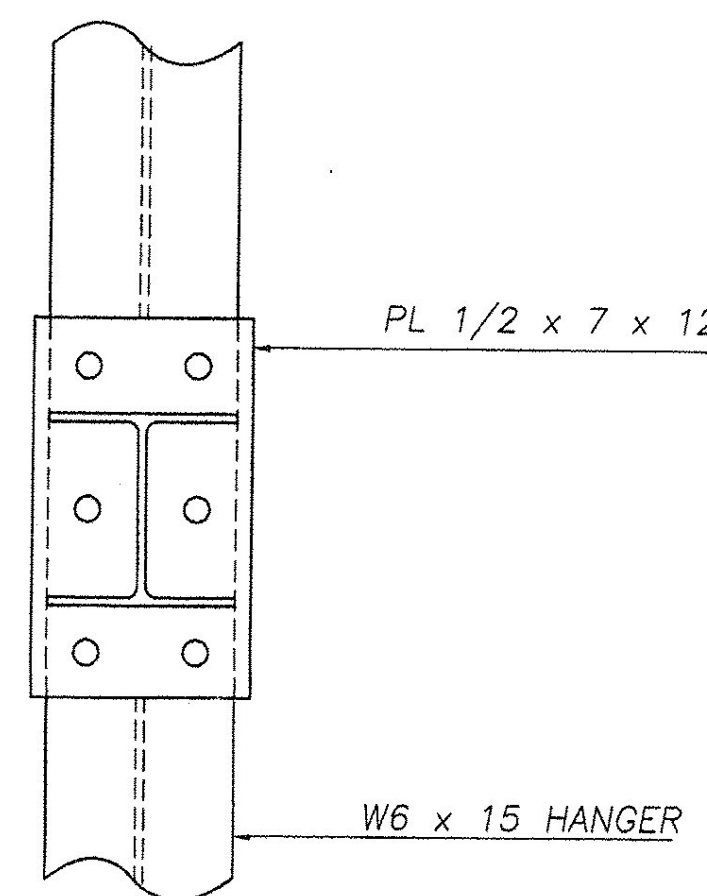


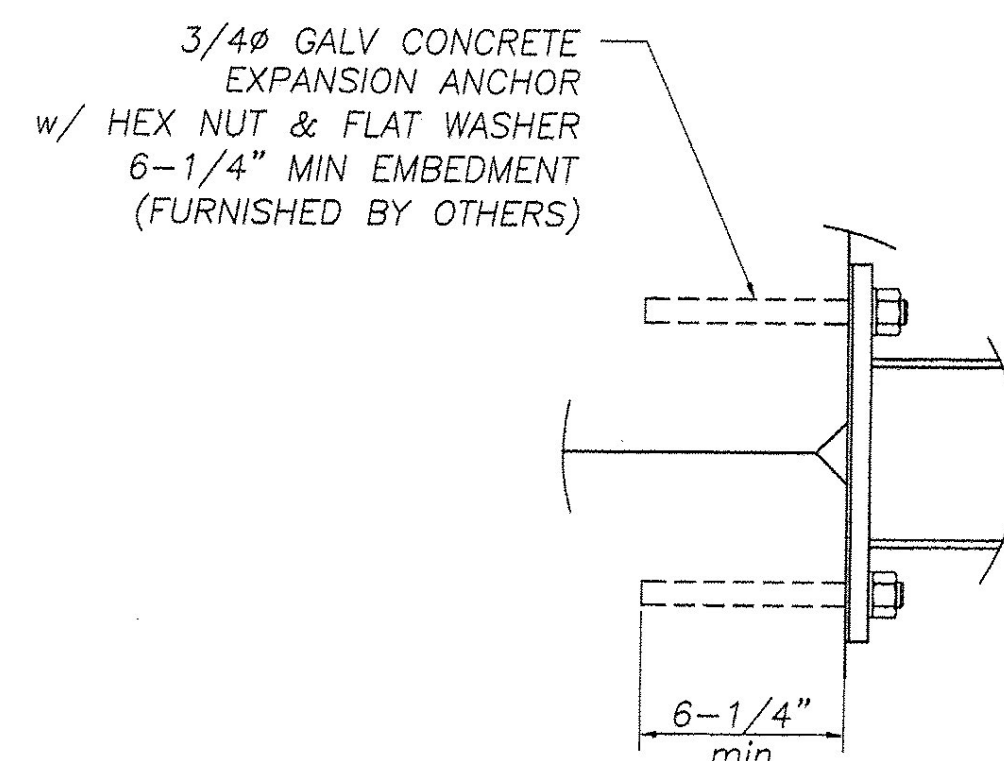
TRAFFIC SIGN A



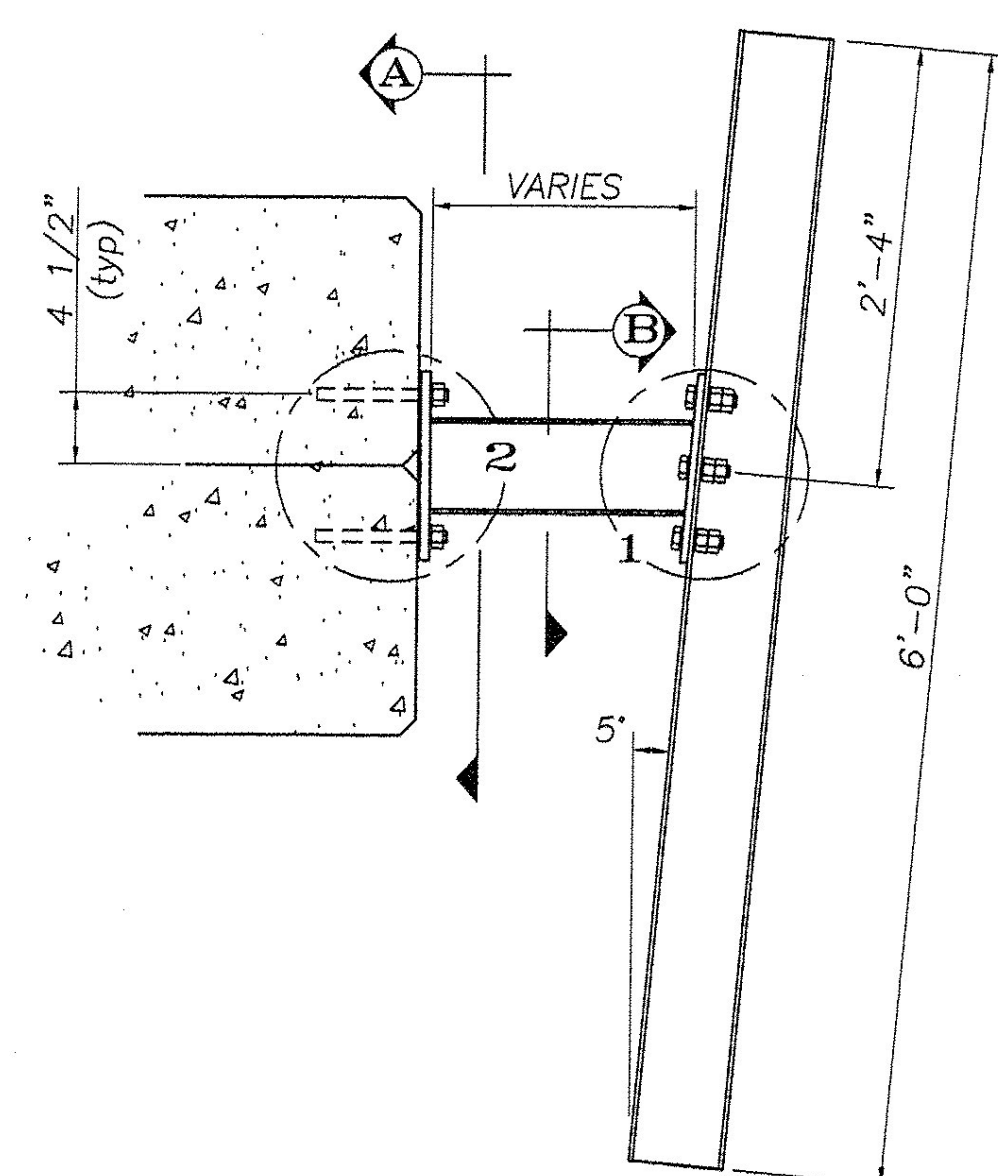
TRAFFIC SIGN B



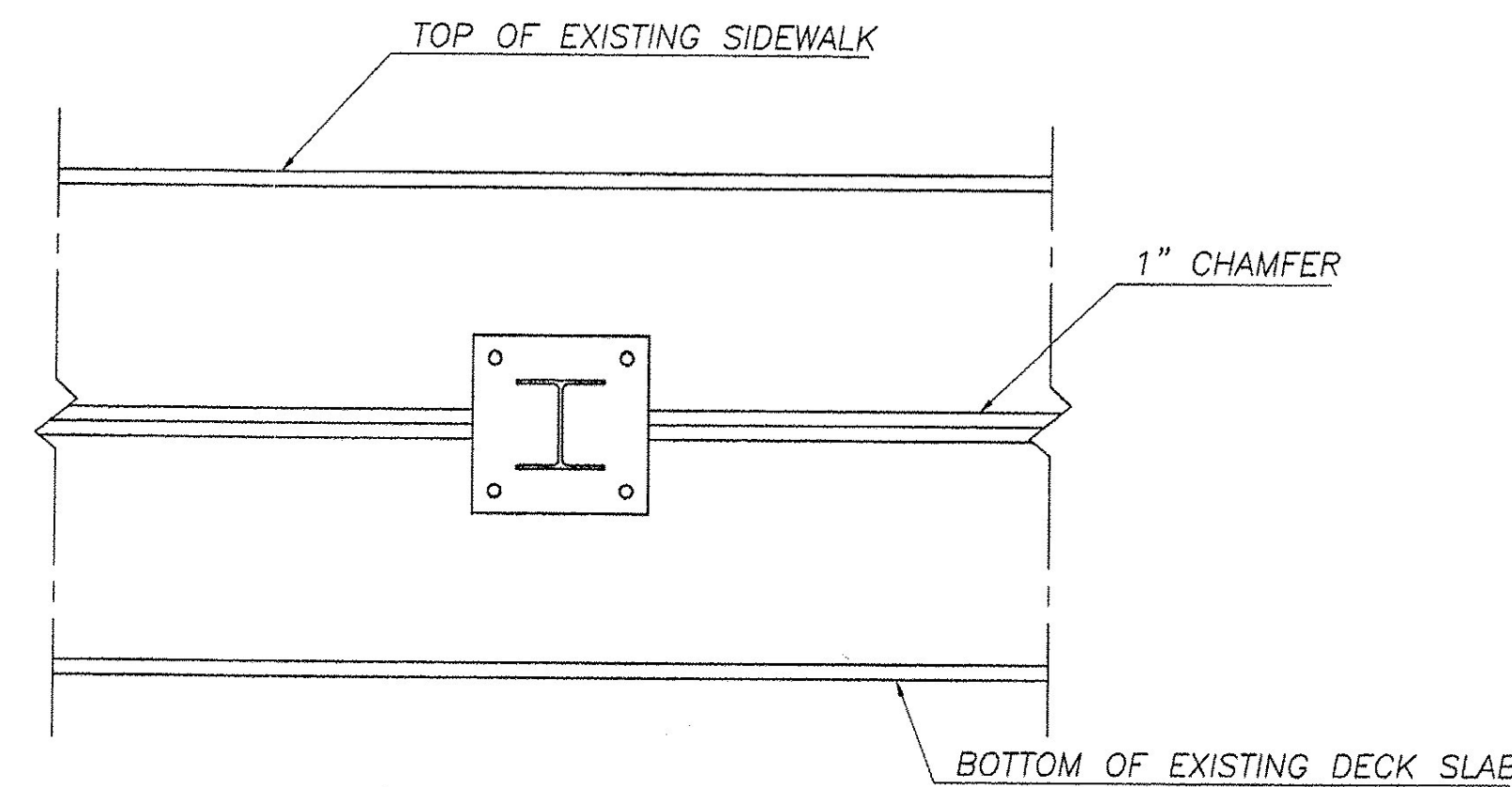
SECTION B



DETAIL 2



SECTION E



SECTION A

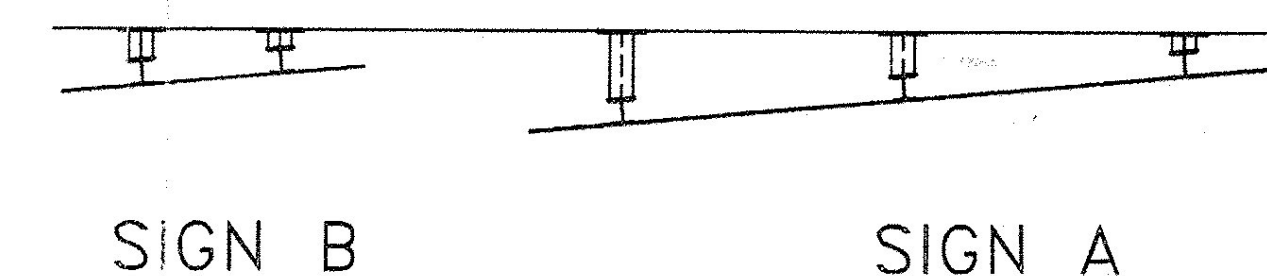
CENTER BRACKET PLATE ON CHAMFER BETWEEN SIDEWALK & DECK SLAB

NOTES:

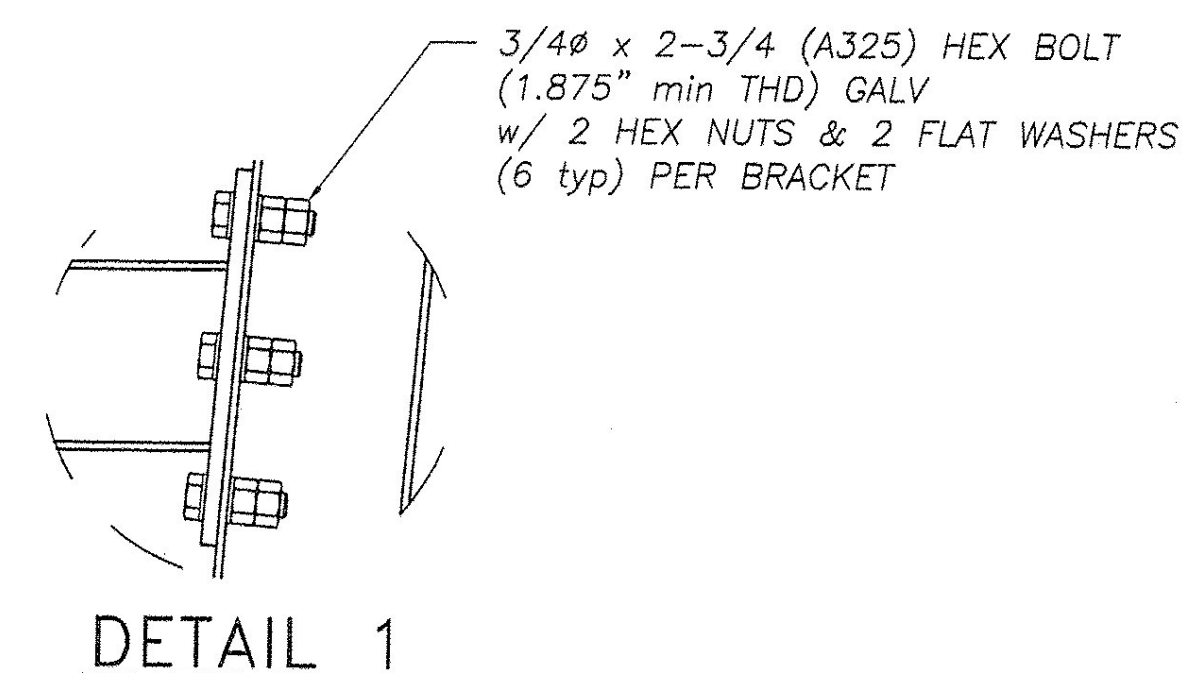
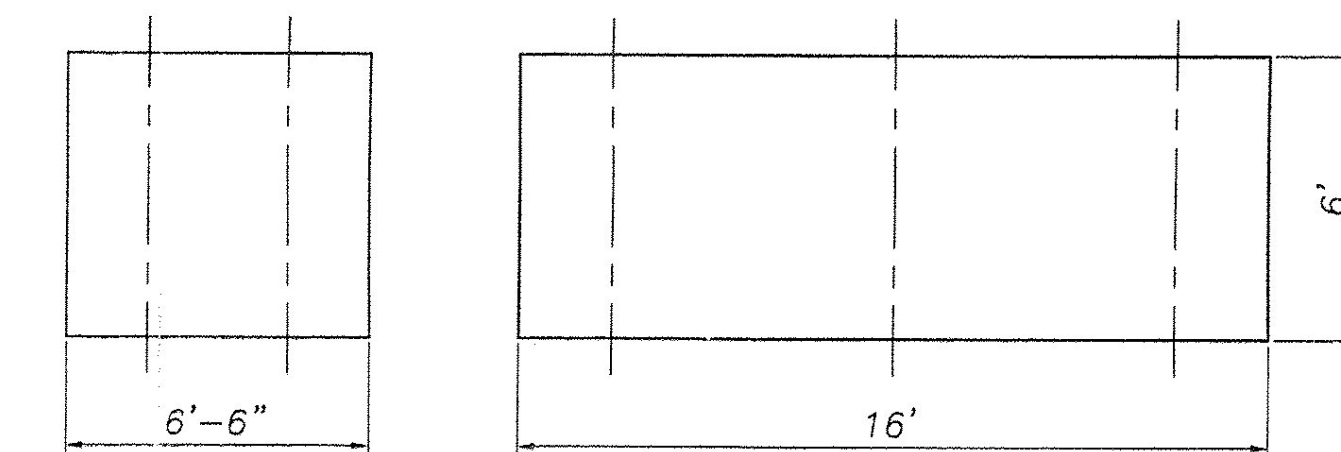
- 1.) ALL HOLES FOR 3/4" DIA STRUCTURAL BOLTS SHALL BE 13/16" DIA
- 2.) CONCRETE EXPANSION ANCHOR STUDS SHALL BE 3/4" DIA (GALV) AND SHALL PROVIDE A MINIMUM ALLOWABLE TENSILE CAPACITY OF 2.5 KIPS AND A MINIMUM ALLOWABLE SHEAR CAPACITY OF 1 KIP. CONCRETE EXPANSION ANCHORS SHALL MEET THE MATERIAL REQUIREMENTS OF ASTM A193.
- 3.) EMBEDMENT FOR THE 3/4" DIA EXPANSION ANCHORS SHALL BE AS SPECIFIED BY MANUFACTURER BUT NOT LESS THAN 6-1/2".
- 4.) SIGN BRACKET SHALL BE LOCATED SUCH THAT DRILLING FOR CONCRETE EXPANSION ANCHORS AVOIDS EXISTING REINFORCING STEEL IN SIDEWALK AND DECK.
- 5.) ALL STEEL SHALL BE GALVANIZED AFTER FABRICATION PER ASTM A123
- 6.) PRIOR TO GALVANIZING GRIND ALL EDGED OF SHAPES AND PLATES TO MINIMUM 1/16" RADIUS.

BILL OF MATERIAL			
Mk.	Qty.	Description	Material
	5	W6 x 15 HANGER BEAM 6'-0" LONG	A36
mk-1	1	HANGER BRACKET 1	
	1	W6 x 15 BEAM x 1'-4 3/4" LONG	A36
	1	PLATE 5/8 x 12 x 12 (DETAIL P2)	A36
	1	PLATE 1/2 x 7 x 12 (DETAIL P1)	A36
mk-2	1	HANGER BRACKET 2	
	1	W6 x 15 BEAM x 10 3/8" LONG	A36
	1	PLATE 5/8 x 12 x 12 (DETAIL P2)	A36
	1	PLATE 1/2 x 7 x 12 (DETAIL P1)	A36
mk-3	1	HANGER BRACKET 3	
	1	W6 x 15 BEAM x 4 1/8" LONG	A36
	1	PLATE 5/8 x 12 x 12 (DETAIL P2)	A36
	1	PLATE 1/2 x 7 x 12 (DETAIL P1)	A36
mk-4	1	HANGER BRACKET 4	
	1	W6 x 15 BEAM x 7 1/4" LONG	A36
	1	PLATE 5/8 x 12 x 12 (DETAIL P2)	A36
	1	PLATE 1/2 x 7 x 12 (DETAIL P1)	A36
mk-5	1	HANGER BRACKET 5	
	1	W6 x 15 BEAM x 4 1/8" LONG	A36
	1	PLATE 5/8 x 12 x 12 (DETAIL P2)	A36
	1	PLATE 1/2 x 7 x 12 (DETAIL P1)	A36
	30	3/4" x 2-3/4" HEX BOLT w/ 1.875" min thread	A325
	60	3/4" HEAVY HEX NUT	A563 DH
	60	3/4" SMALL ROUND FLAT WASHER	F436
	5	1/8" THICK x 12 x 12 BEARING PAD (50 DURO min)	NEOPRENE

CONCRETE EXPANSION ANCHORS FURNISHED BY OTHERS



I-89 S.B.



DETAIL 1

REVISIONS		
No.	Remarks	Date
0	Initial submittal	7/14/06

RECEIVED STR-7
 CK'D BY _____ OK'D BY _____
 JUL 26 2006
 RESUBMIT _____ APPROVED _____
 BY _____ DATE _____

HIGHWAY SAFETY CORP.
 GLASTONBURY, CT

BRIDGE MOUNTED TRAFFIC SIGN SUPPORT BRACKETS
 PATCHEN ROAD BRIDGE
 I-89 SOUTHBOUND
 SOUTH BURLINGTON, VT
 IM 089-3(37)

DRAWN BY p. radice
 CHECKED [Signature]
 DATE 07-13-06
 SCALE none
 HSC REFERENCE NO. 1561
 GENERAL CONTRACTOR [Blank]
 SUB CONTRACTOR F.R. LAFAYETTE
 SIZE D REVISION 0
 SHEET NO. 1 of 2

