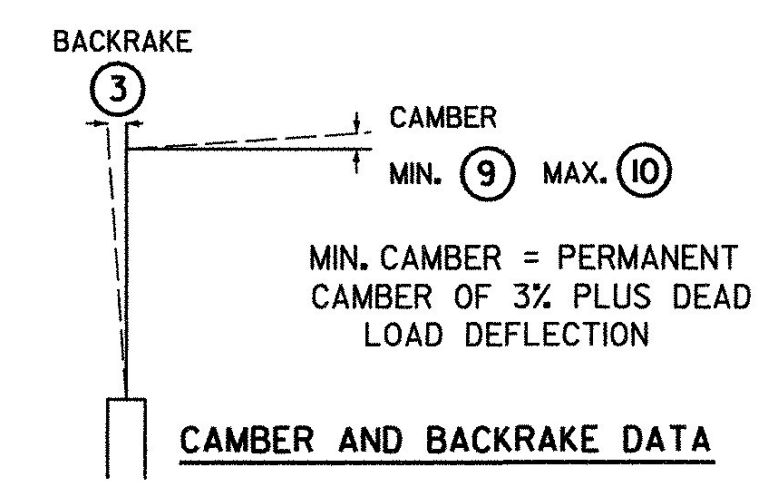
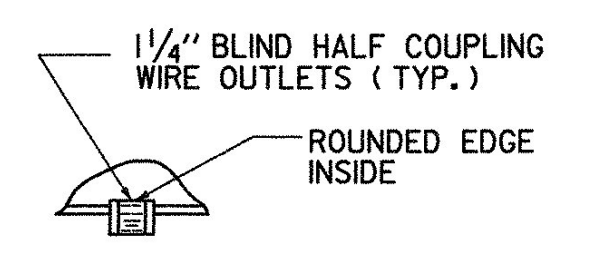


TYPE A

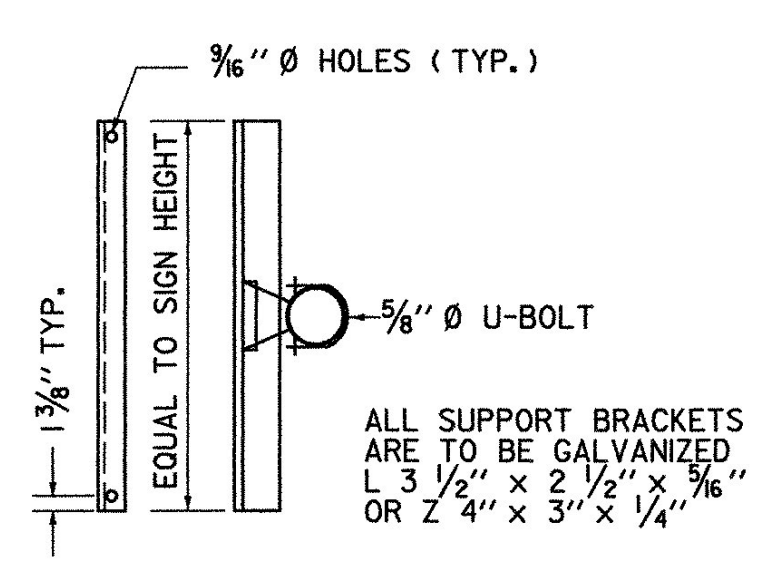
- POLE BASE DIAMETER ④
- POLE GAUGE ⑤
- POLE TAPER RATE ⑥
- ARM DIAMETER ⑪
- ARM GAUGE ⑫
- ARM TAPER RATE ⑬



CAMBER AND BACKRAKE DATA

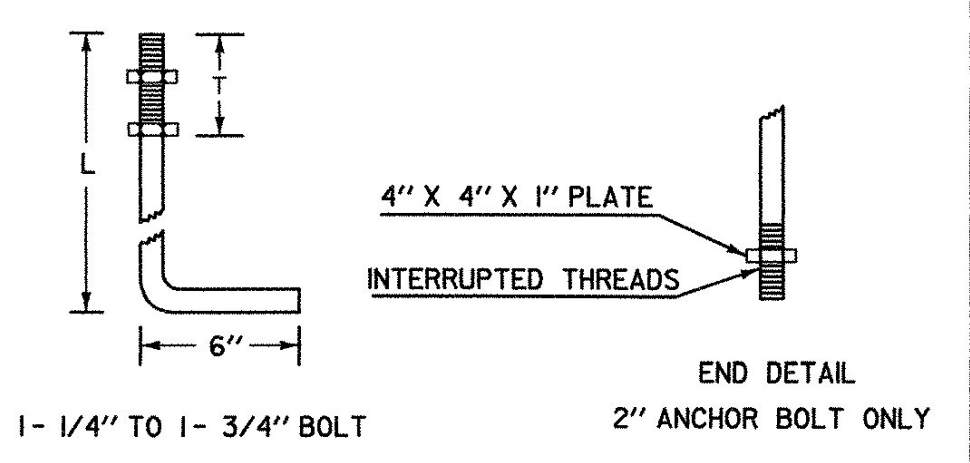


DETAIL A

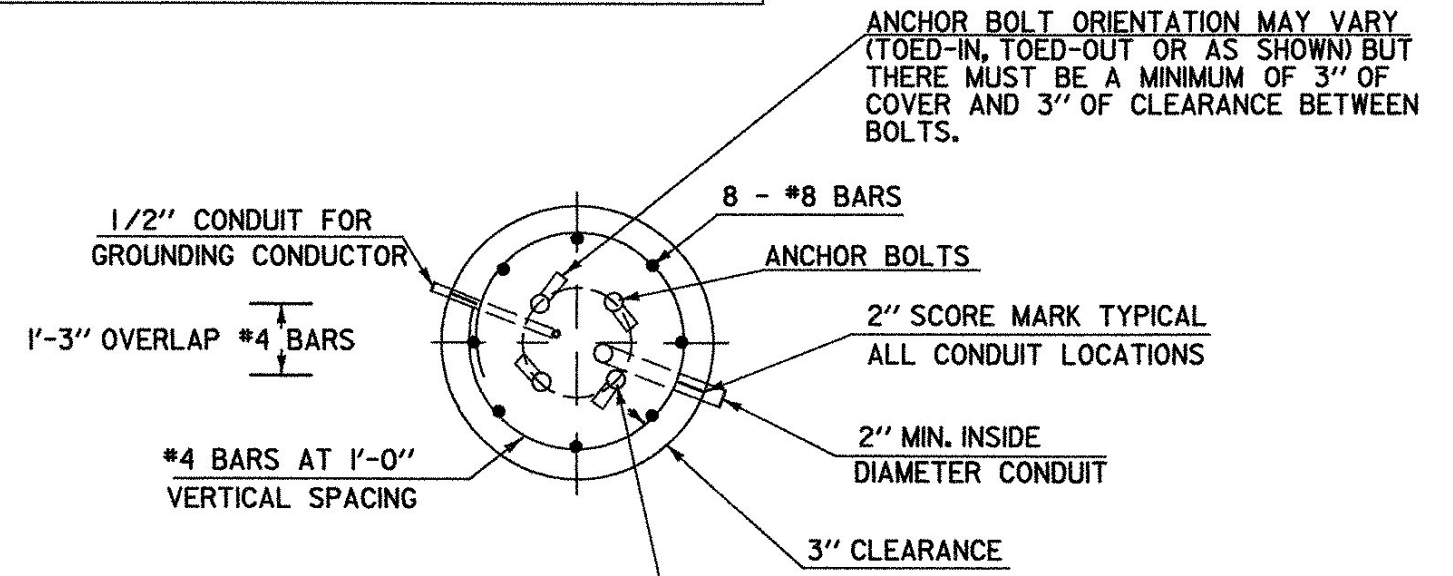


SIGN BRACKET DETAILS

ANCHOR BOLT DETAIL		
SIZE	L (IN)	T (IN)
1- 1/4" X 48"	42	8
1- 1/2" X 60"	54	9
1- 3/4" X 90"	84	9
2" X 96"	96	9

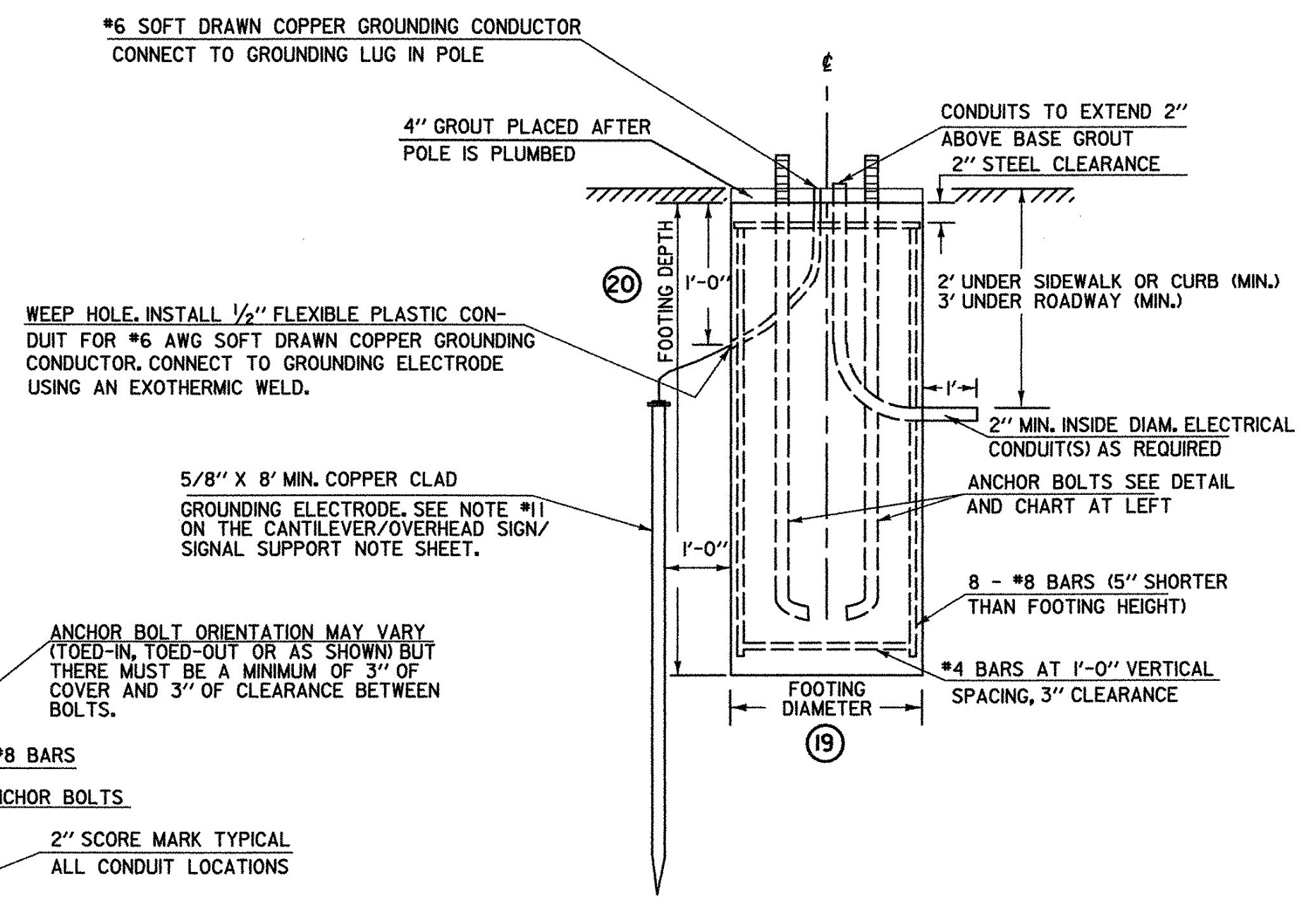


ANCHOR BOLT DETAIL

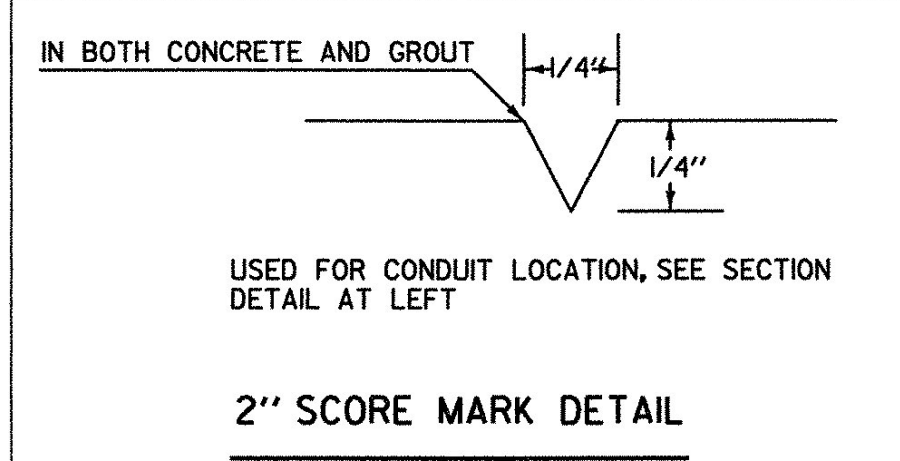


CANTILEVER FOOTING DETAIL

(SPREAD FOOTINGS OR PILES ARE OPTIONAL)



ELEVATION

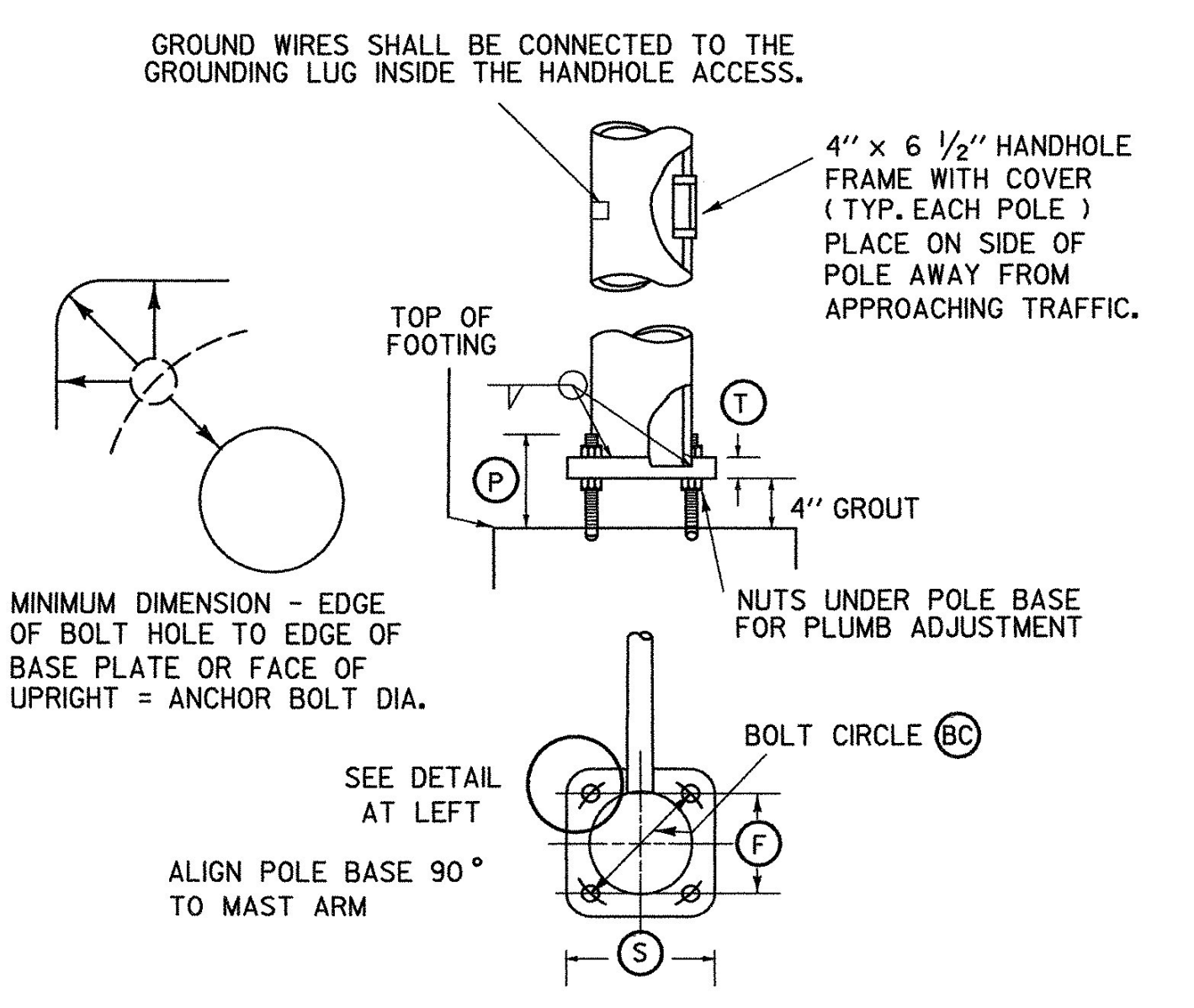


2" SCORE MARK DETAIL

SEE SHEET(S) FOR CROSS SECTIONS

		STRUCTURE DIMENSIONS																										
POLE	TYPE	POLE DATA						ARM DATA						LIGHTING DATA					FOOTING DATA			BASE PLATE / BOLT DATA						
		①	②	③	④	⑤	⑥	⑦	⑧	⑨	⑩	⑪	⑫	⑬	⑭	⑮	⑯	⑰	⑱	⑲	⑳	ⓐ	ⓑ	ⓒ	ⓓ	ⓔ	ⓕ	ANCHOR BOLT SIZE
MPIA	A	20.0'	18.1'	TBBM	TBBM	TBBM	TBBM	45'	16.5'	3%	5%	TBBM	TBBM	TBBM	N/A	N/A	N/A	N/A	N/A	3	13	24"	1.41'	TBBM	TBBM	TBBM	2"	
MPIB	A	19.0'	16.9'	TBBM	TBBM	TBBM	TBBM	40'	16.5'	3%	5%	TBBM	TBBM	TBBM	N/A	N/A	N/A	N/A	N/A	3	13	24"	1.41'	TBBM	TBBM	TBBM	2"	

TBBM = TO BE DETERMINED BY MANUFACTURER



POLE BASE AND BASE PLATE DETAIL

PROJECT NAME:	SOUTH BURLINGTON
PROJECT NUMBER:	IM 089-3(37)
FILE NAME:	z03al78trfbdn.dgn
PROJECT LEADER:	KEN UPMAL
DESIGNED BY:	V. KACOYANNAKIS
PLOT DATE:	5/5/2006
DRAWN BY:	V. KACOYANNAKIS
CHECKED BY:	J. FORD
SHEET	71 OF 99

NOTE:
DETAILS
NTS

SINGLE MAST ARM CANTILEVER / FOOTING DETAIL SHEET