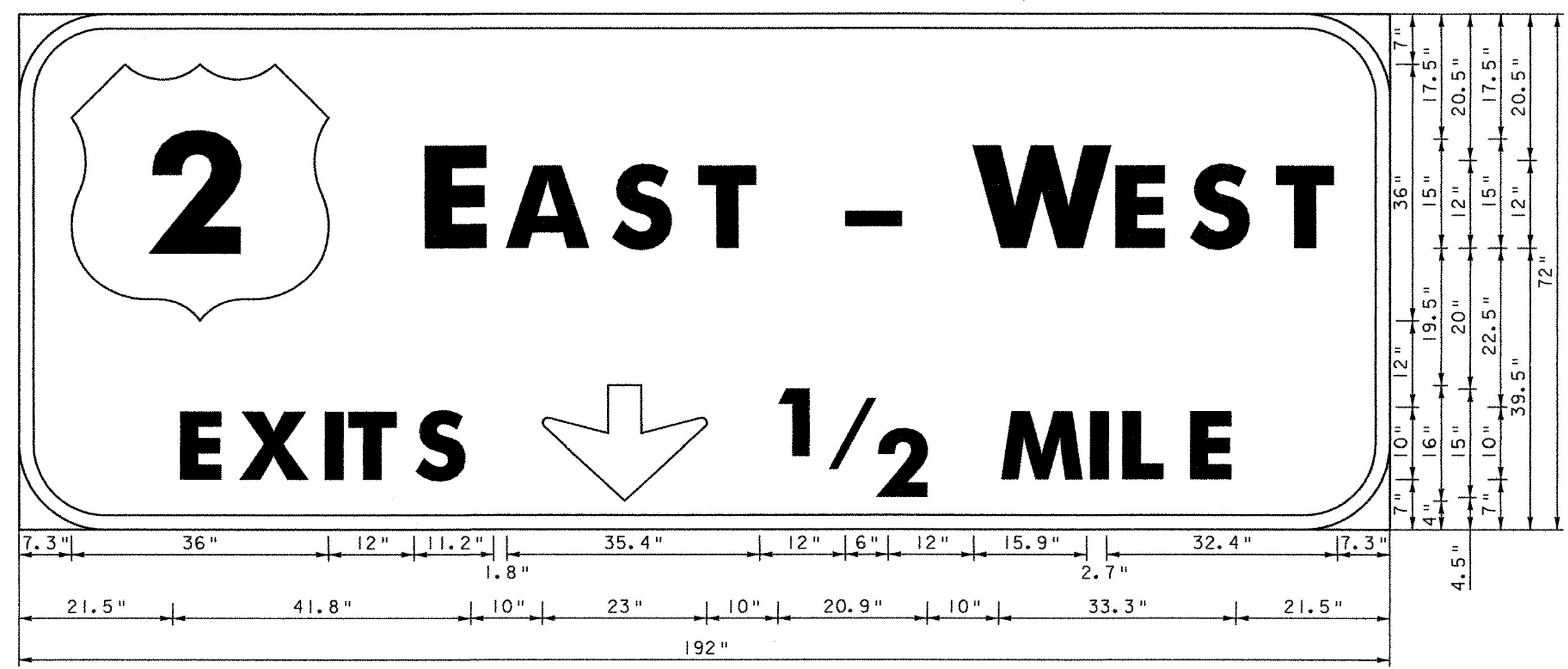


LOCUS MAP

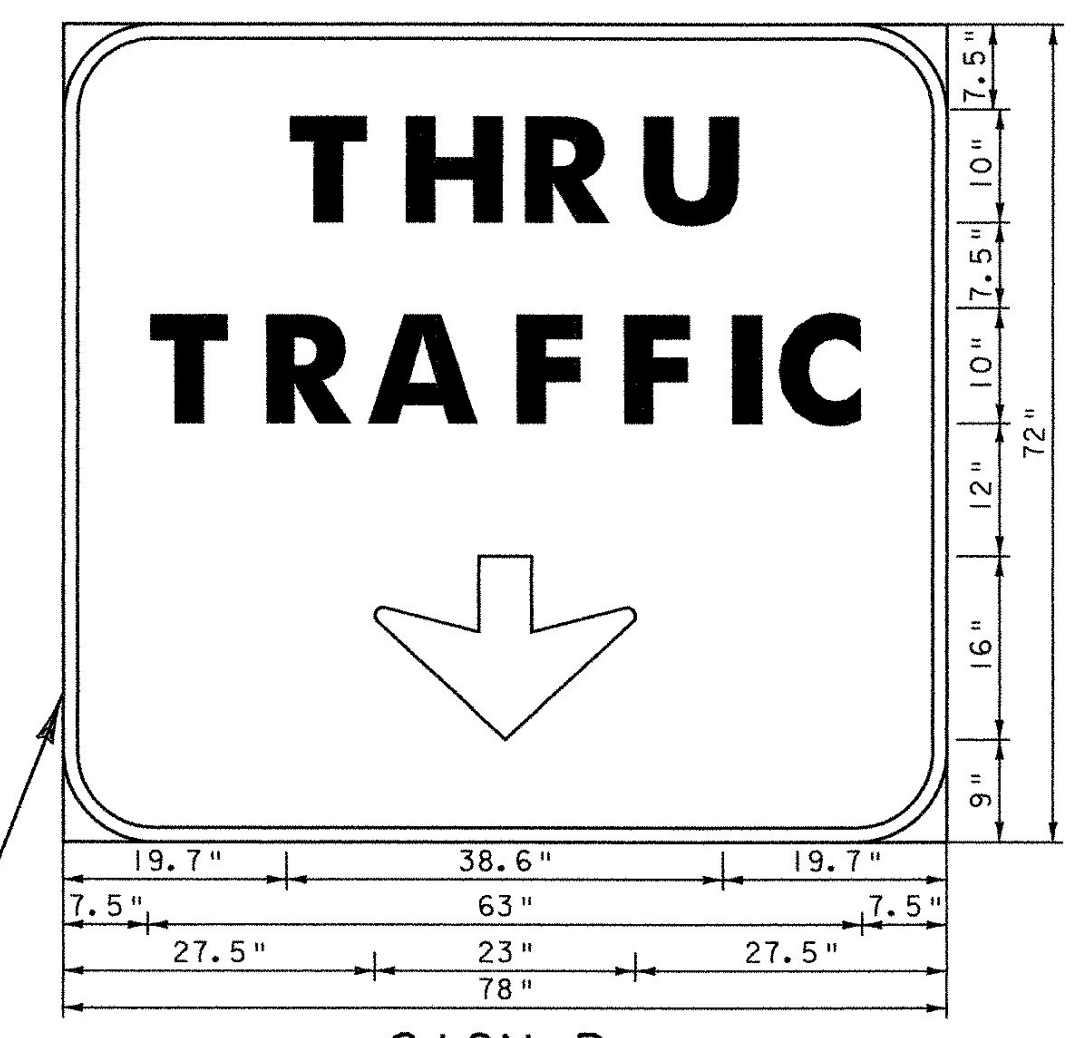
APPROXIMATE SCALE: 1" = 2500'



SIGN A

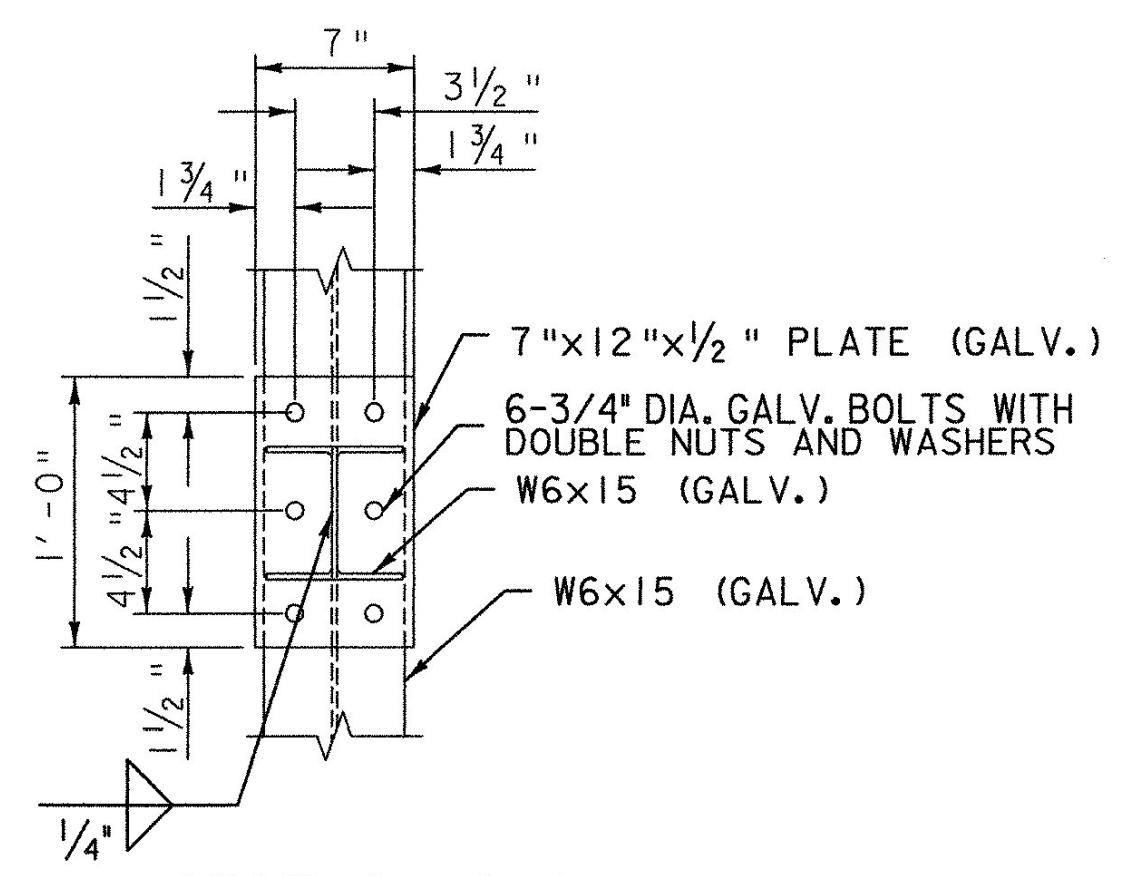
12.0" Radius, 2.0" Border, White on Green;
 "EAST - WEST" E Mod; "EXITS" E Mod;
 Down Arrow Custom - 16.0" 270°; "1/2" E Mod;
 "MILE" E Mod;

USE TYPE III GREEN REFLECTIVE SHEETING AND ASTM TYPE IX BOARDER AND TEXT (TYP.)



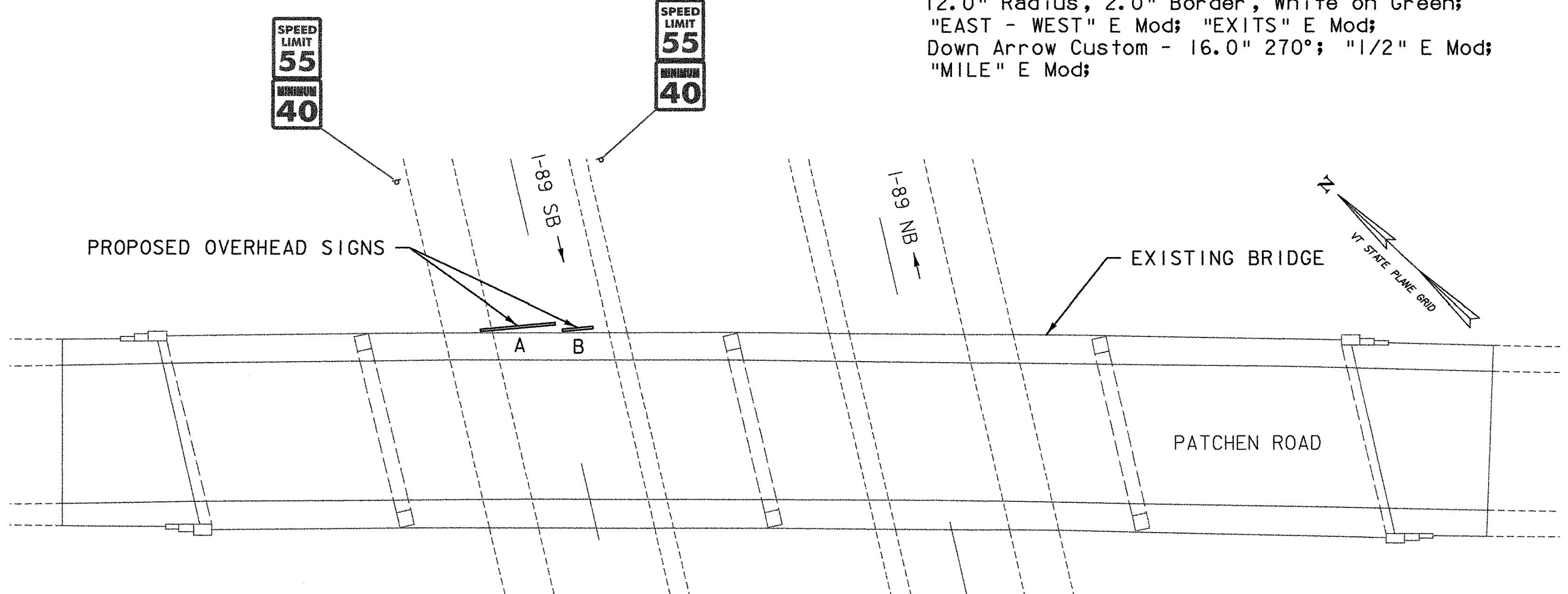
SIGN B

8.0" Radius, 1.3" Border, White on Green;
 "THRU" E Mod; "TRAFFIC" E Mod;
 Down Arrow Custom - 16.0" 270°;



SECTION C-C

SCALE: 1 1/2" = 1'-0"



PLAN

SCALE IN FEET

SCALE: 1" = 20'

GENERAL NOTE:

TRAFFIC MANAGEMENT FOR THE PLACEMENT OF THE SIGNS "A" AND "B" SHALL BE DONE IN ACCORDANCE WITH VTRANS STANDARD DETAILS E-103 AND THE SPECIAL PROVISIONS.

STRUCTURAL NOTES:

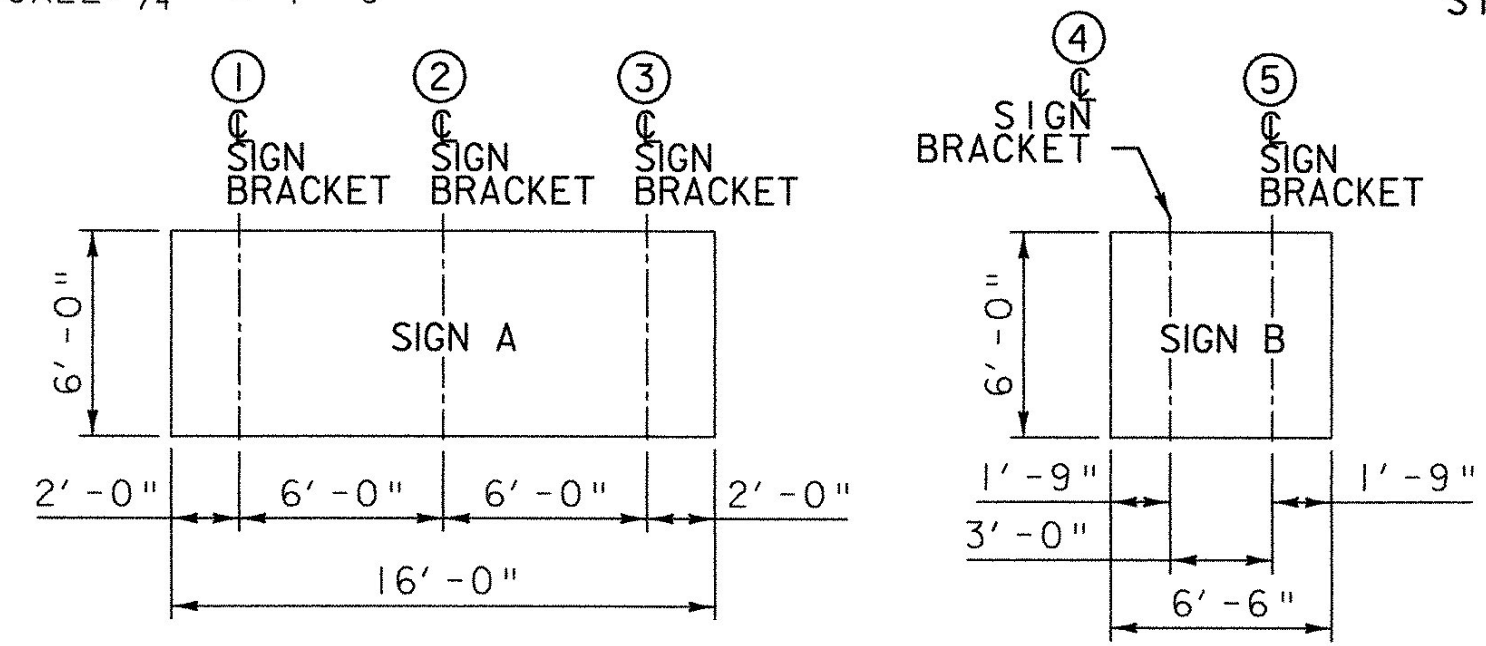
1. ALL HOLES FOR 3/4" DIA. BOLTS SHALL BE 1 1/8" DIA.
2. CONCRETE EXPANSION ANCHORS SHALL BE 3/4" DIA. (GALV.) AND SHALL PROVIDE A MINIMUM ALLOWABLE TENSILE CAPACITY OF 2.5 KIPS AND A MINIMUM ALLOWABLE SHEAR CAPACITY OF 1 KIP. CONCRETE EXPANSION ANCHORS SHALL MEET THE MATERIAL REQUIREMENTS OF ASTM A193
3. EMBEDMENT FOR 3/4" DIA. CONCRETE ANCHORS SHALL BE AS SPECIFIED BY MANUFACTURER, BUT NOT LESS THAN 6 1/2".
4. SIGN BRACKET SHALL BE LOCATED SUCH THAT DRILLING FOR CONCRETE EXPANSION ANCHORS AVOIDS EXISTING REINFORCING STEEL IN SIDEWALK AND DECK.

DATUM

VERTICAL	N/A
HORIZONTAL	N/A

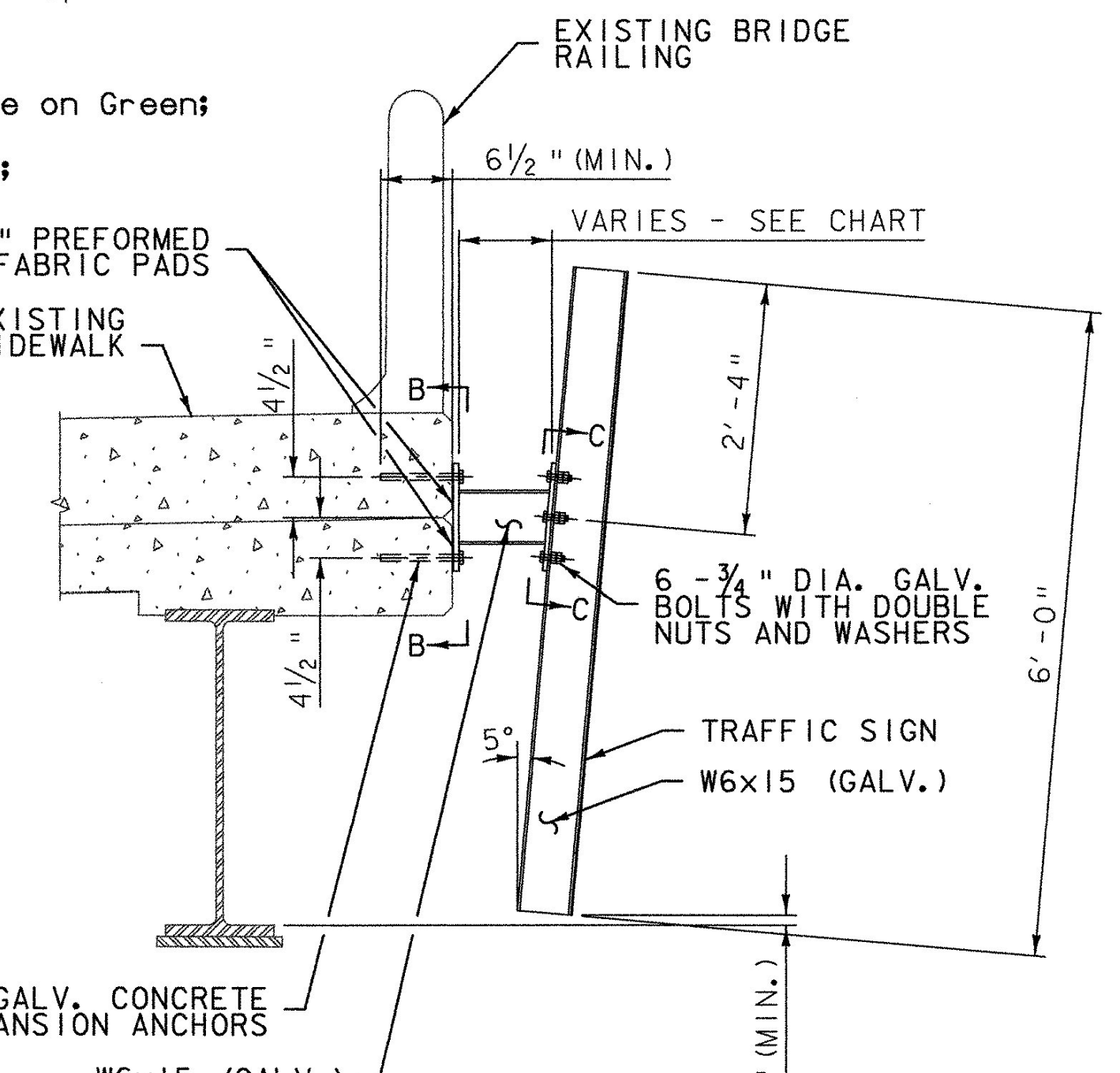
TRAFFIC SIGN DETAIL

SCALE: 3/4" = 1'-0"



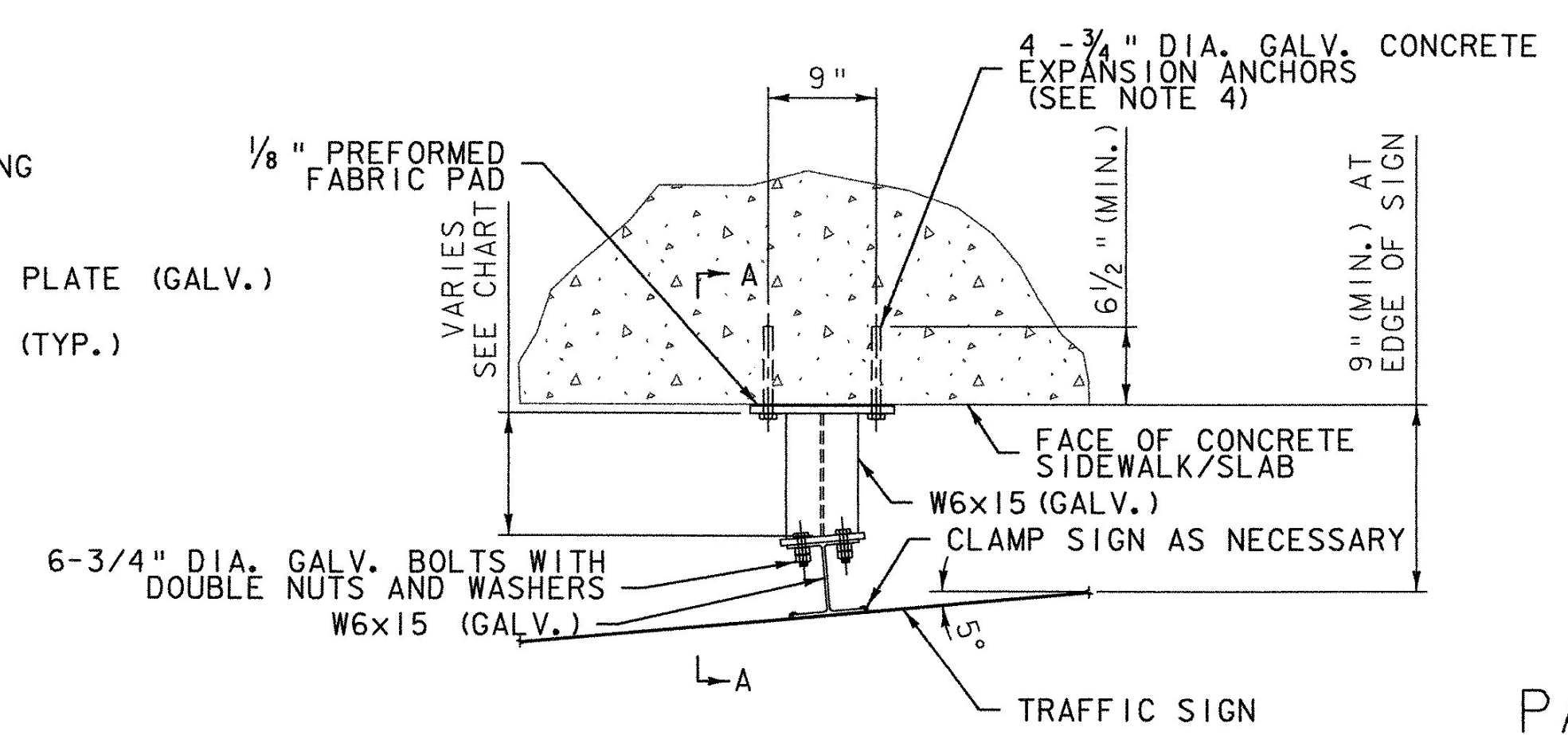
TRAFFIC SIGN BRACKET LAYOUT

SCALE: 3/16" = 1'-0"



SECTION A-A

SCALE: 3/4" = 1'-0"



TRAFFIC SIGN SUPPORT DETAIL

SCALE: 1" = 1'-0"

LOCATION	LENGTH ALONG C
SIGN "A"	
①	1'-4 1/2"
②	10 1/8"
③	3 7/8"
SIGN "B"	
④	7"
⑤	3 7/8"

PATCHEN ROAD BRIDGE SIGN SUPPORT PLAN AND DETAILS

PROJECT NAME:	SOUTH BURLINGTON	PLOT DATE:	5/5/2006
PROJECT NUMBER:	IM 089-3(37)	DRAWN BY:	W.WONG
FILE NAME:	z03a178signsupp.dgn	CHECKED BY:	K.ISHIKURA
PROJECT LEADER:	KEN UPMAL	DESIGNED BY:	M.CRUIZ
			SHEET 63 OF 99