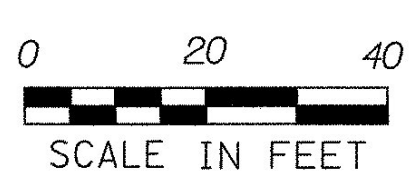
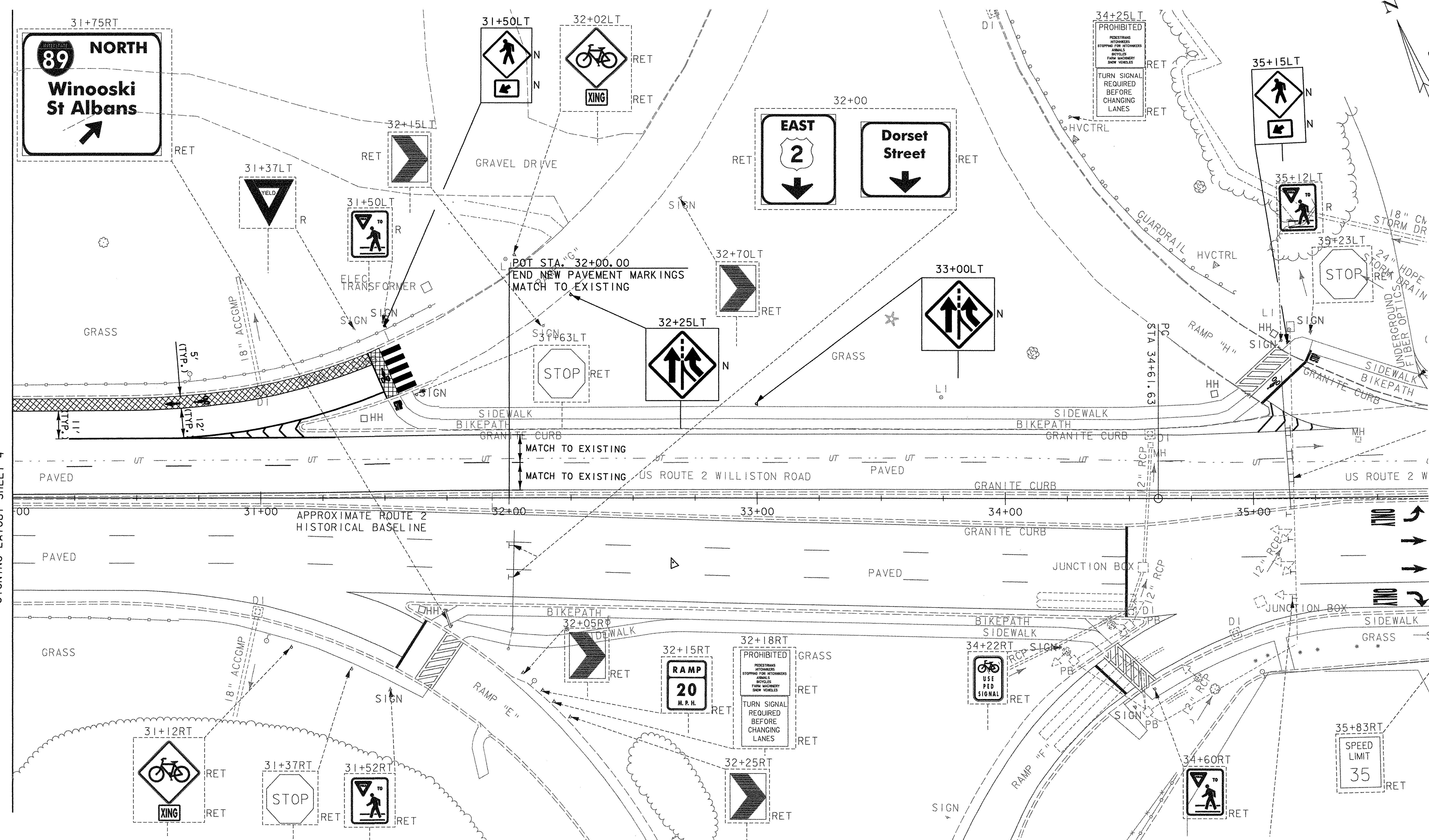


MATCHLINE STA. 30+00
PAVEMENT MARKING AND
SIGNING LAYOUT SHEET 4



DATUM
VERTICAL NAVD 88
HORIZONTAL NAD 83 (1996)

SIGN LEGEND

	= EXISTING SIGN
	= NEW SIGN
	= REMOVE EXISTING SIGN AND POST
	= SALVAGE SIGN AND RELOCATE TO NOTED LOCATION WITH NEW SIGN POST. REMOVE AND DISPOSE EXISTING SIGN POST
	= NEW
	= RETAIN AT EXISTING LOCATION
	= BACK TO BACK

DURABLE 4" WHITE LINE
US ROUTE 2 30+00 ~ 32+00 LT, 5' X 10' = 50 LF
US ROUTE 2 30+25 ~ 32+00 LT, 178' LF
US ROUTE 2 30+67 ~ 31+48 LT, RAMP 'G', 83 LF
US ROUTE 2 30+00 ~ 31+43 LT, RAMP 'G', 146 LF
US ROUTE 2 31+45 (EDGE OF BIKE LANE), RAMP 'G', 20 LF

DURABLE 4" YELLOW LINE
US ROUTE 2 30+00 ~ 32+00 LT ~ 20LF

DURABLE 12" WHITE LINE
US ROUTE 2 30+67 ~ 31+18 LT,
CHEVRON MARKINGS - 29 LF

DURABLE CROSSWALK BAR TYPE
US ROUTE 2 31+54 LT, RAMP 'G', 20 LF

REMOVE SIGNS
3 EACH

PAINTED ISLAND (MOD. - GREEN BIKE PATH)
US ROUTE 2 30+00 LT ~ 31+48 LT,
(5' WIDTH) - 720 SF
RAMP 'G' CROSSING,
(5' WIDTH) - 100 SF

REMOVAL OF EXISTING PAVEMENT MARKINGS
US ROUTE 2 30+00 ~ 32+00 LT

DURABLE LETTER OR SYMBOL
US ROUTE 2 30+64 LT, RAMP 'G', BIKE THRU ARROW, 1EA
US ROUTE 2 30+76 LT, RAMP 'G', BIKE SYMBOL, 1EA
US ROUTE 2 31+47 LT, RAMP 'G', BIKE SYMBOL, 1EA
US ROUTE 2 31+53 LT, RAMP 'G', BIKE 'STOP', (1 X 4 = 4 EA)

REMOVE EXISTING PAVEMENT MARKINGS
US ROUTE 2 30+00 ~ 32+00 LT

NOTE:
SEE SHEET NO. 69 FOR BAR TYPE CROSSWALK DETAIL

**PAVEMENT MARKING AND
SIGNING LAYOUT SHEET 5**

PROJECT NAME:	SO. BURLINGTON I-89 RAMP "C"
PROJECT NUMBER:	IM 089-3(37)
FILE NAME:	z03a178pmbdr.dgn
PROJECT LEADER:	KEN UPMAL
DESIGNED BY:	V.KACOYANNAKIS
PLOT DATE:	5/5/2006
DRAWN BY:	V.KACOYANNAKIS
CHECKED BY:	J.FORD
SHEET	58 OF 99