

GPS CONTROL POINTS

**HVCTRL #1**

STANDARD DISK STAMPED  
 CW | RESET  
 N = 19709.85  
 E = 61835.18  
 ELEV. = 312.89

TO REACH FROM THE WEST END OF THE WILLISTON ROAD (U.S. ROUTE 2) BRIDGE OVER I-89 AT EXIT 14 IN SOUTH BURLINGTON GO WEST ALONG WILLISTON ROAD FOR 0.2 MI (0.3 KM) TO THE MAIN ENTRANCE TO THE SHERATON INN ON THE RIGHT. TURN RIGHT AND GO NORTH INTO MAIN ENTRANCE AND ALONG ACCESS ROAD ON THE WESTERLY SIDE OF THE SHERATON PARKING LOT FOR 0.1 MI (0.2 KM) TO A SHARP CURVE TO THE EAST. BEAR RIGHT AND GO EAST FOR 0.15 MI, (0.24 KM) PASSING NORTHERLY OF THE SHERATON BUILDINGS, TO THE EASTERLY SIDE OF THE PARKING LOT. PARK VEHICLE AND WALK EAST, PASSING THROUGH A DRAINAGE SWALE, FOR ABOUT 40 M (131.2 FT) TO THE STATION SITE. THE MARK IS A UVM+SAC DISK IN THE TOP OF AN ALUMINUM MONUMENT SET 6 CM BELOW GROUND SURFACE. IT IS 40.6 M (133.2 FT) EAST OF THE EAST EDGE OF THE PARKING LOT, 1.0 M (3.3 FT) WEST OF A 10 CM SQUARE CONCRETE VTDH ROW MONUMENT IN A 1.5 M (4.9 FT) HIGH CHAIN LINK FENCE, 0.4 M (1.3 FT) SOUTHWEST OF A METAL POST, 0.3 M (1.0 FT) SOUTHEAST OF A METAL POST, AND 1.1 M (3.6 FT) WEST-SOUTHWEST OF A STEEL WITNESS POST.

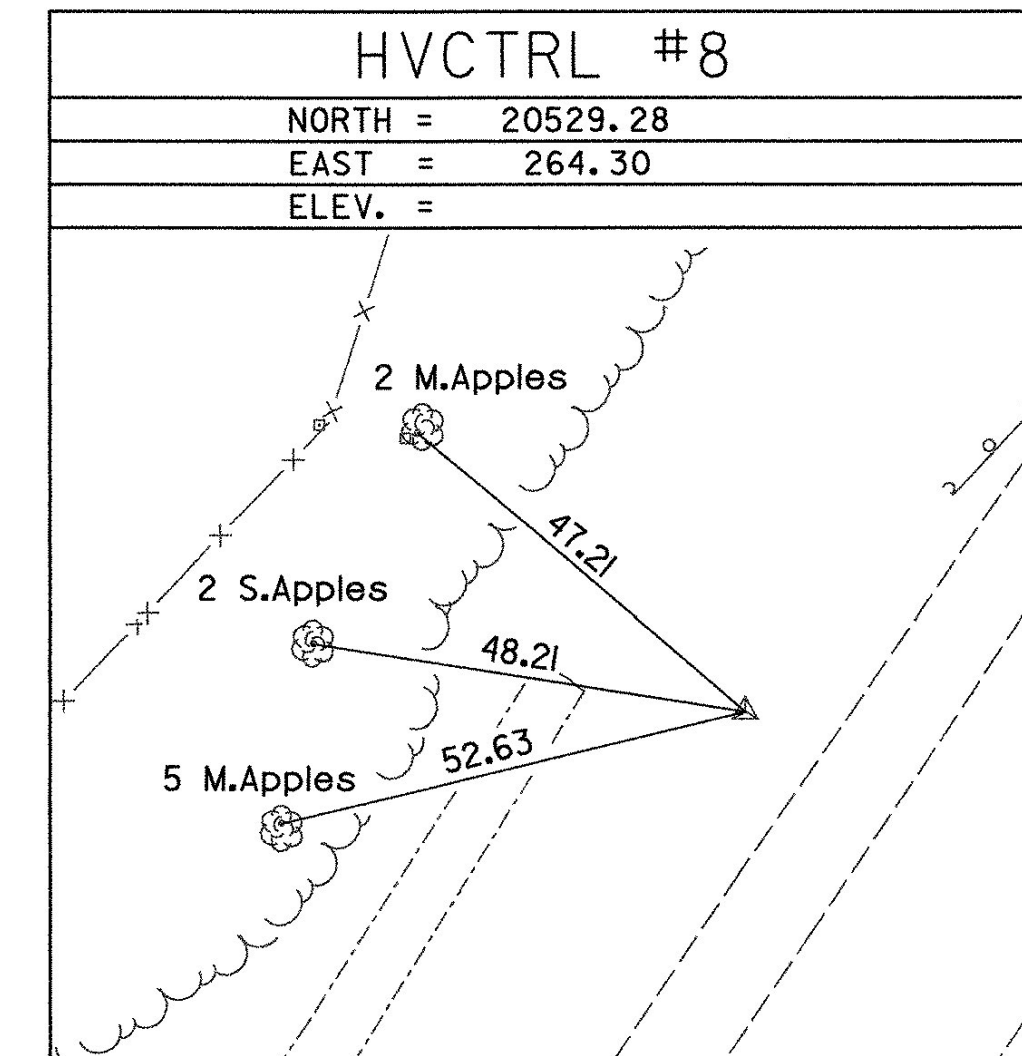
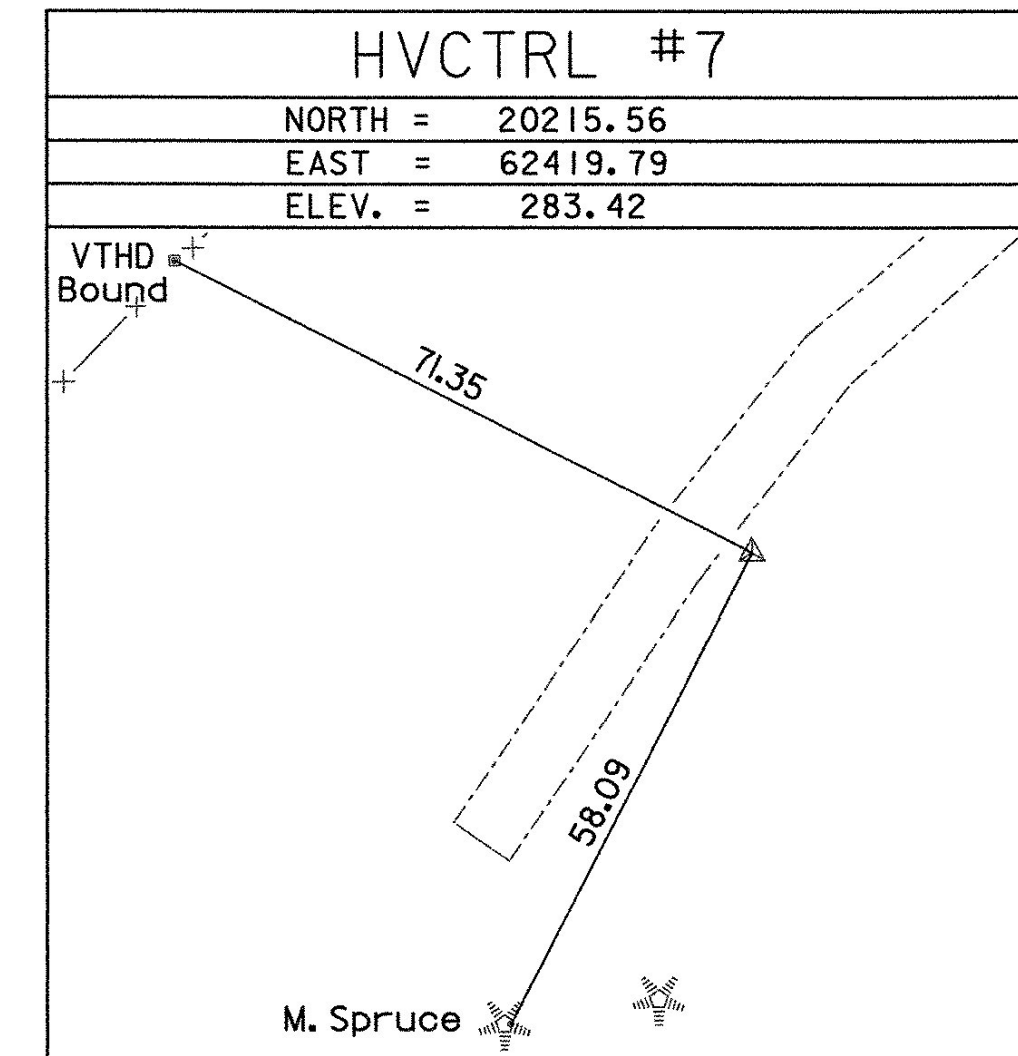
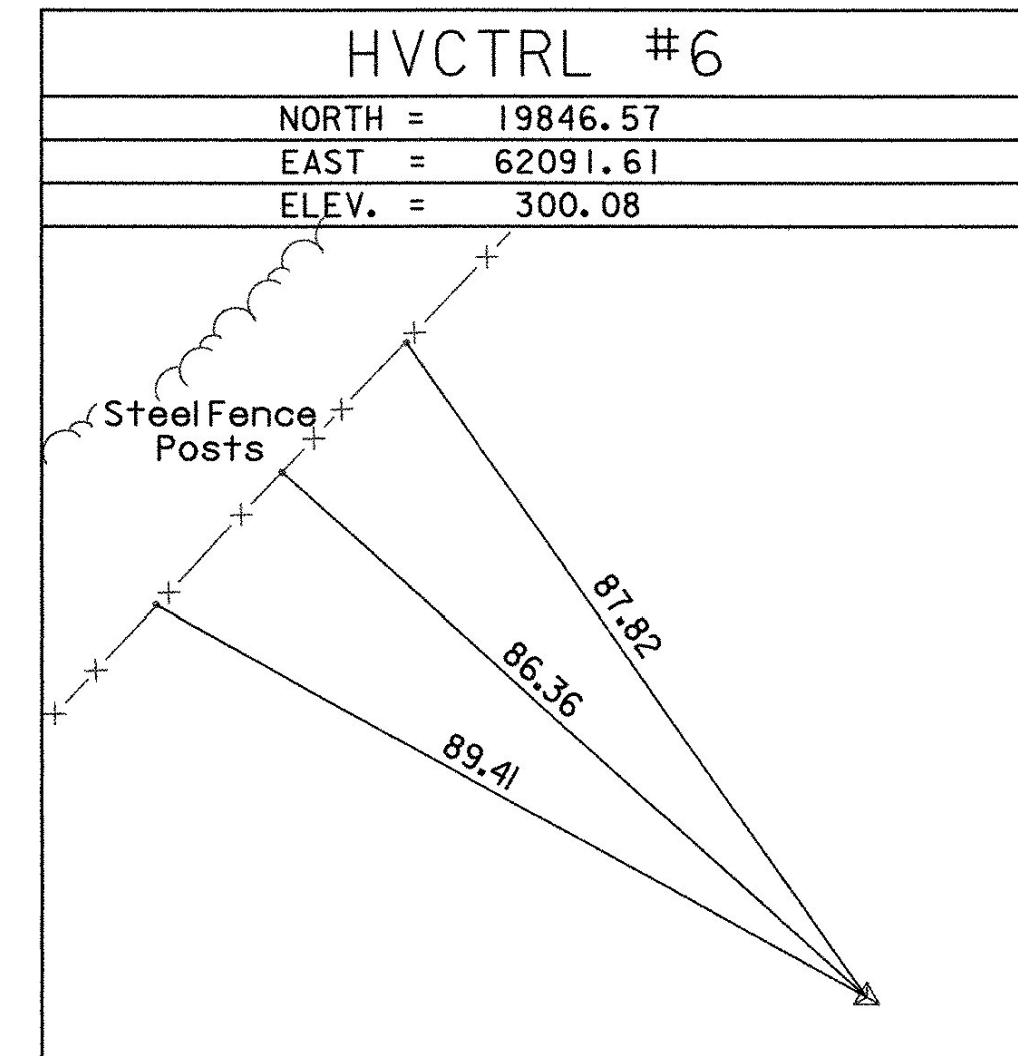
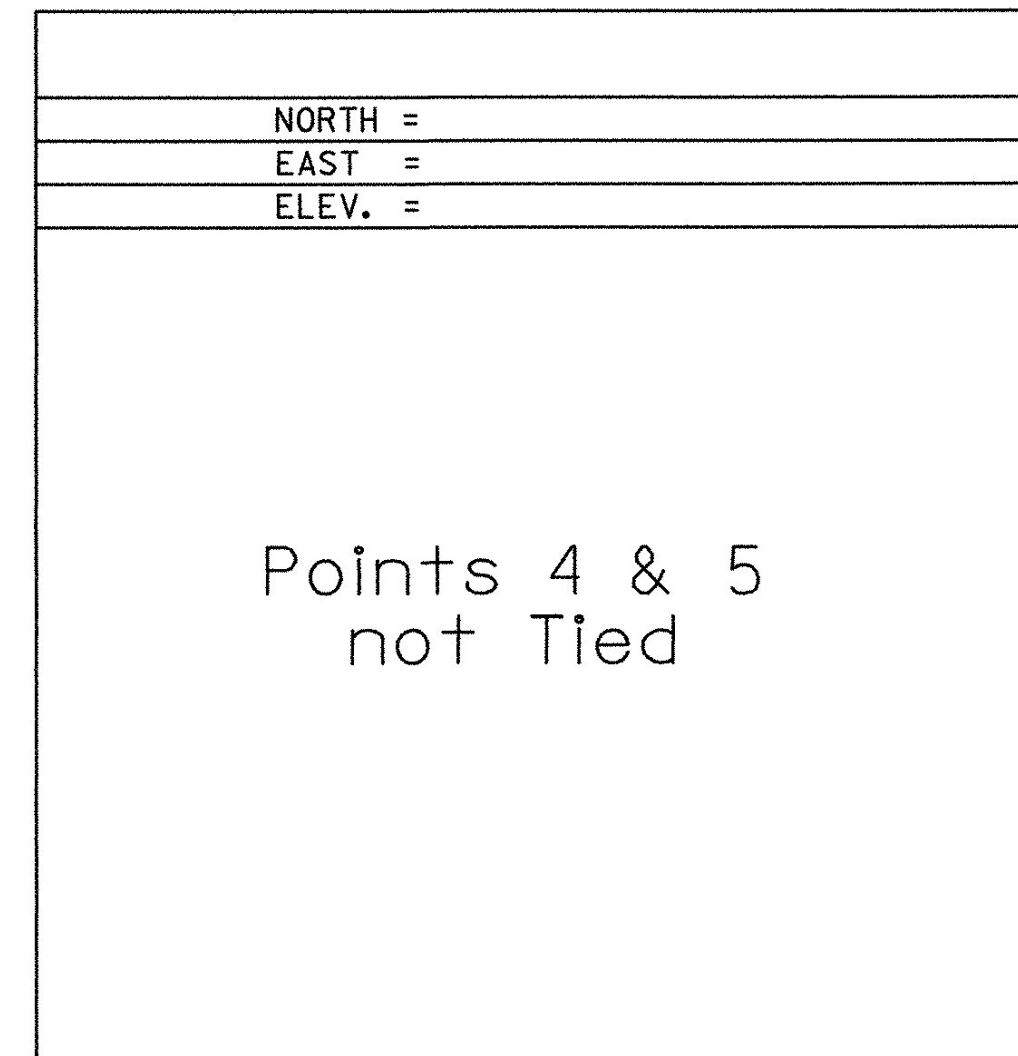
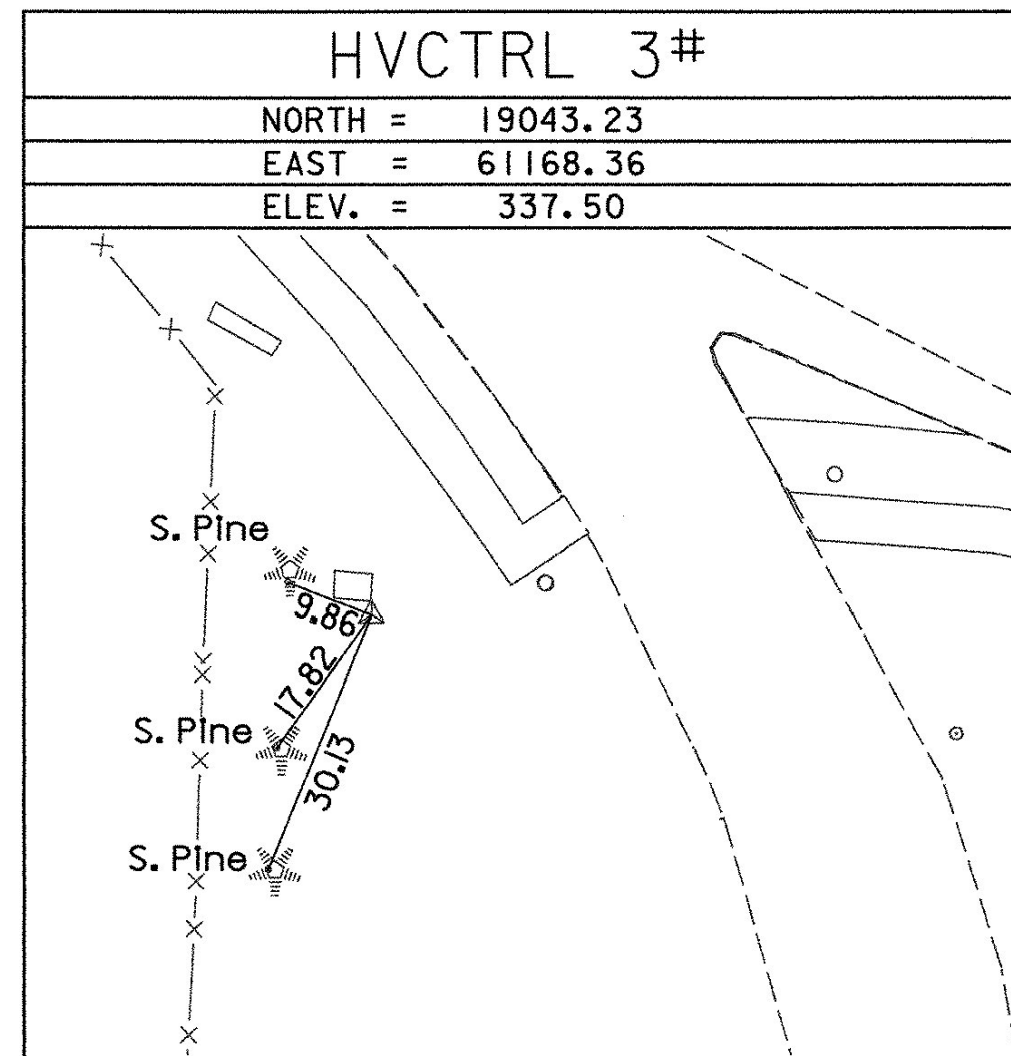
**HVCTRL #2**

STANDARD DISK STAMPED  
 C95034  
 N = 18832.34  
 E = 61630.13  
 ELEV. = 332.20

GENERAL LOCATION, SOUTH BURLINGTON, VT. THE MARK IS SET ON TOP OF THE ABUTMENT AT THE SOUTHWEST CORNER OF THE U.S. ROUTE 2 BRIDGE OVER I-89 AT EXIT 14. IT IS 0.3 M (1.0 FT) EAST OF THE WEST END OF THE ABUTMENT, 0.1 M (0.3 FT) NORTH OF THE SOUTH EDGE OF THE ABUTMENT, AND 0.2 M (0.7 FT) SOUTH OF THE SOUTH EDGE OF THE CONCRETE SIDEWALK.

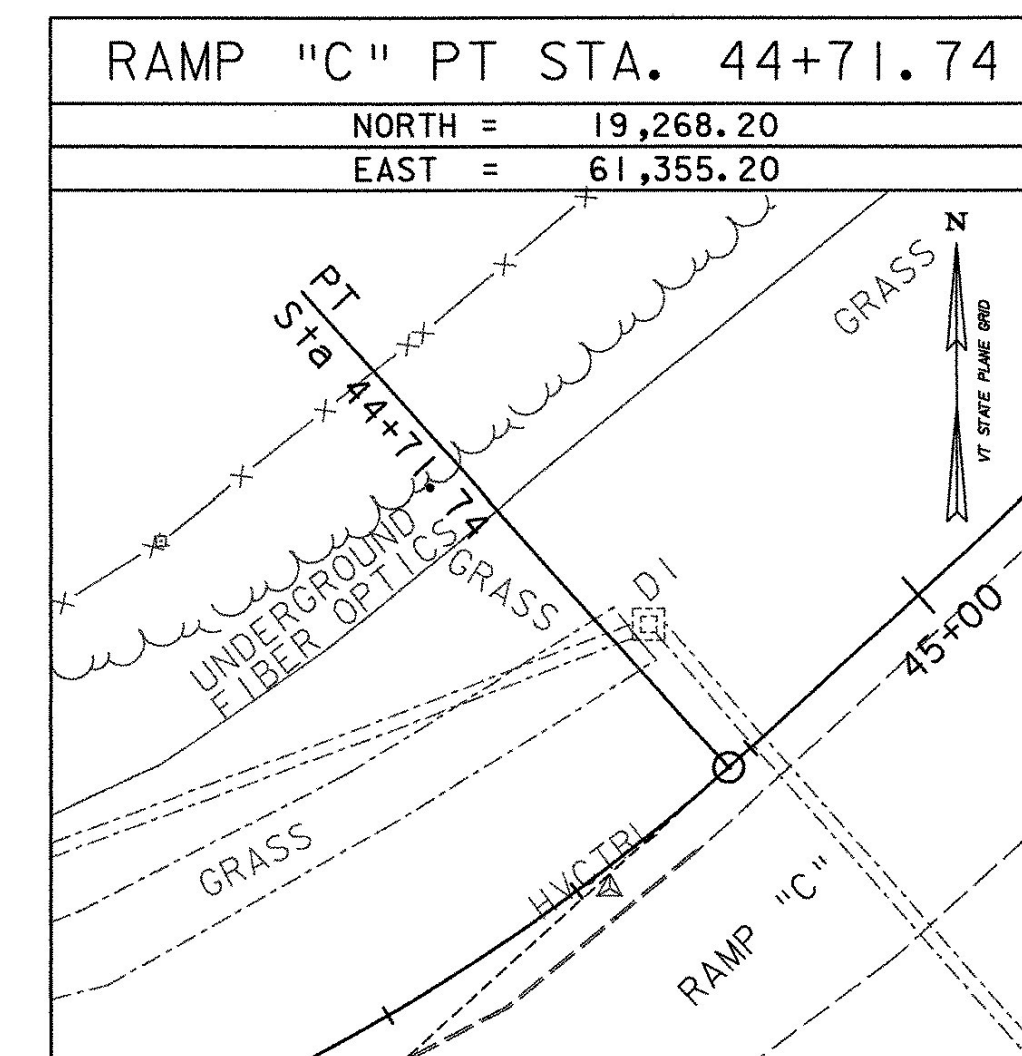
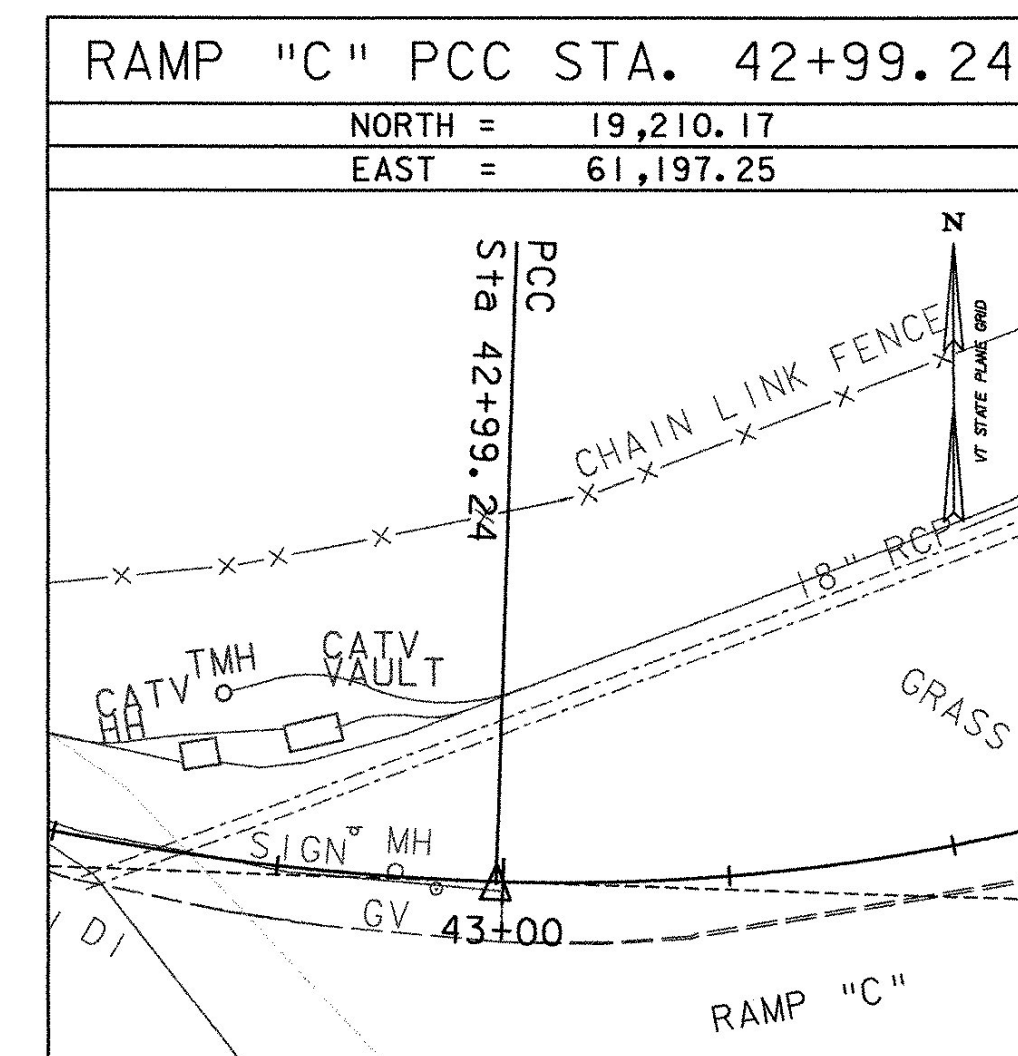
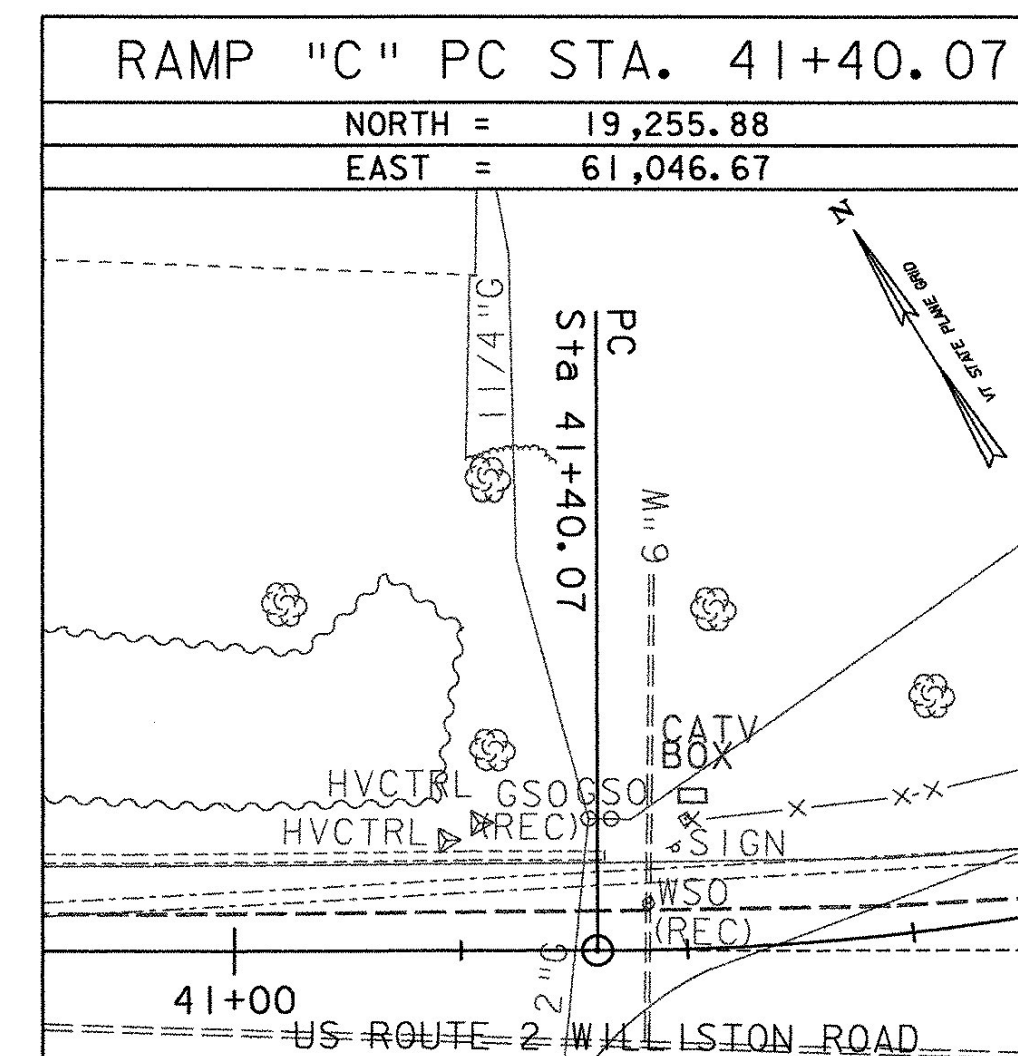
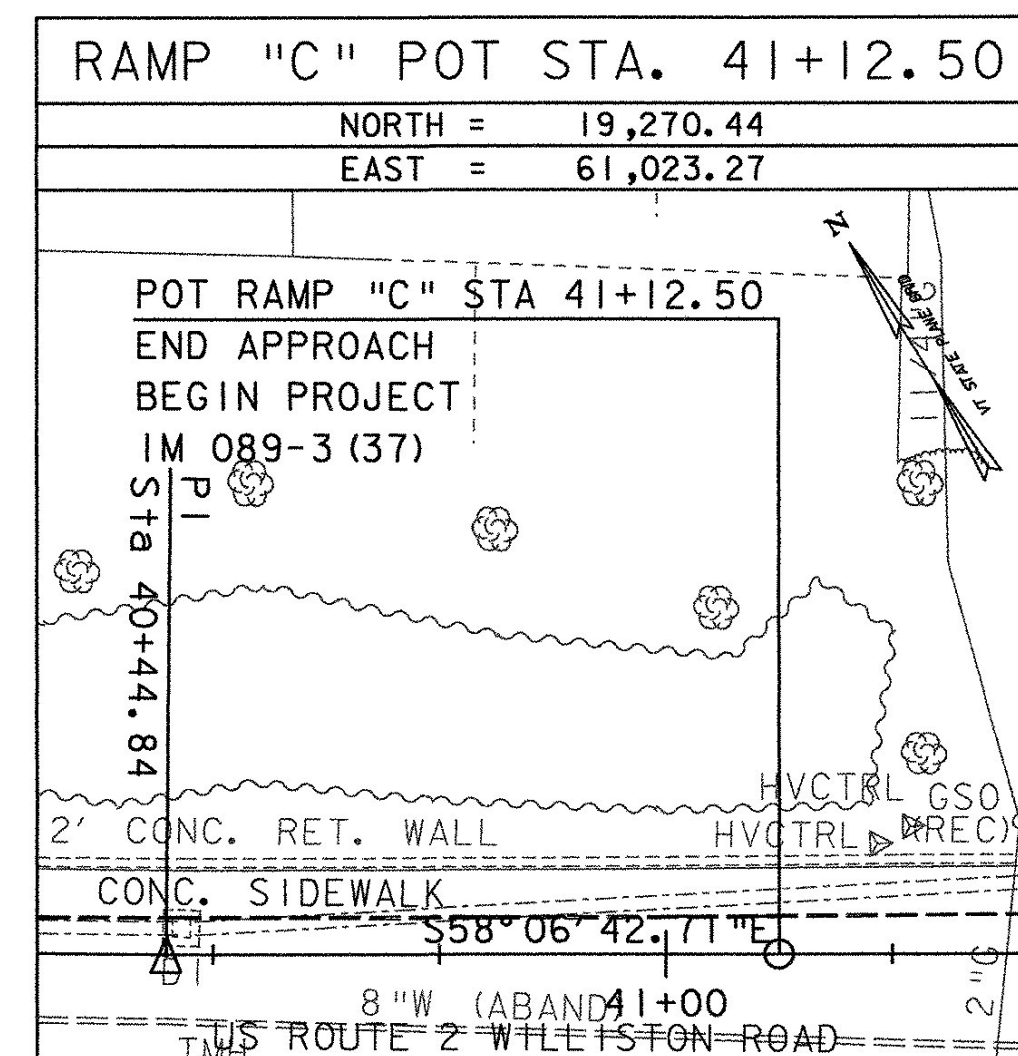
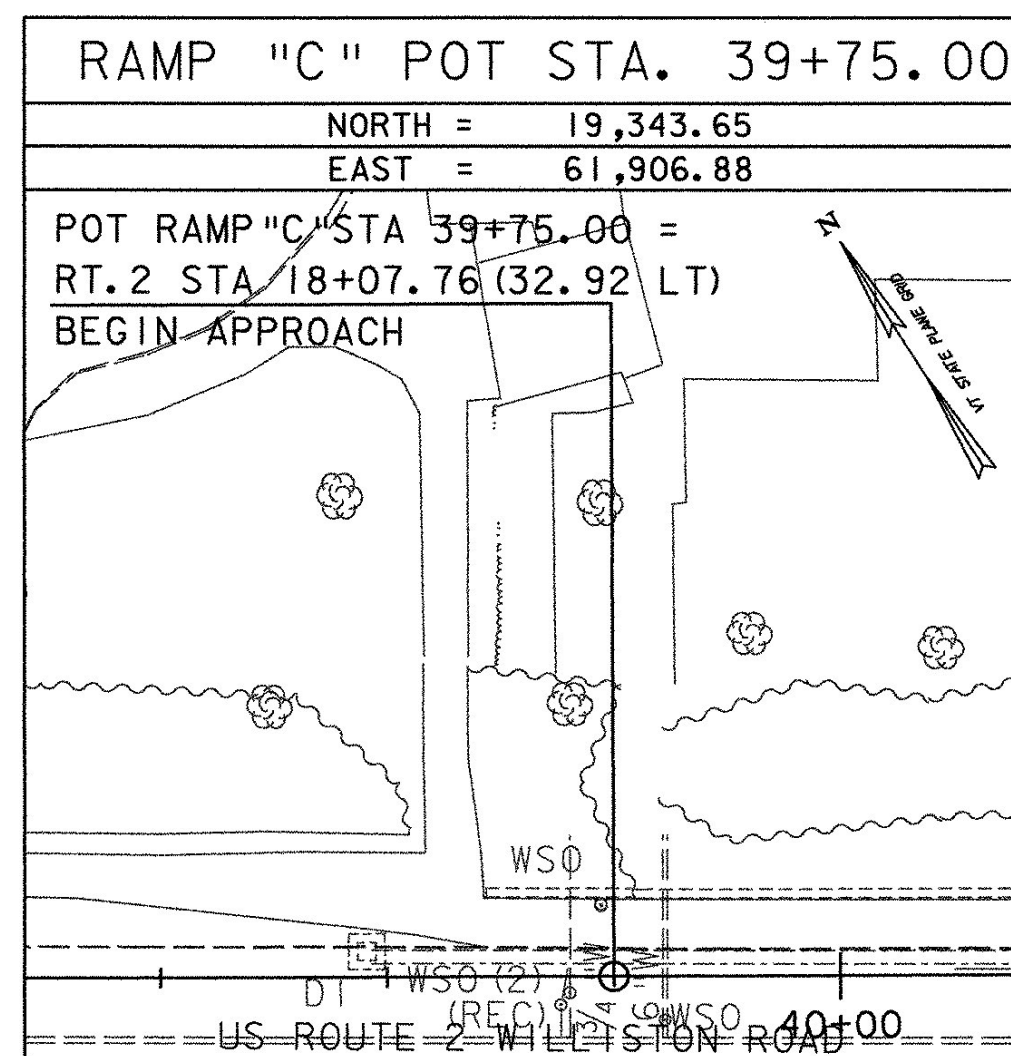
\* DESCRIPTION PROVIDED BY VERMONT AGENCY OF TRANSPORTATION GEODETIC SURVEY UNIT  
 \* In order to fit the VT Agency of Transportation Design Plane add 700,000 to the northing and 1,400,000 to the Easting

TRAVERSE TIES



\* Main Traverse completed 05/26/00 by L.Orvis P.C. & J.Hulett & G.Wilson

ALIGNMENT TIES



DATUM  
 VERTICAL NAVD 88  
 HORIZONTAL NAD 83 (96)  
 ADJUSTMENT Compass

PROJECT NAME: SOUTH BURLINGTON  
 PROJECT NUMBER: IM 089-3 (37)  
 FILE NAME: z03a1781e.dgn  
 PROJECT LEADER: KEN UPMAL  
 DESIGNED BY:  
 TIE SHEET 10F 2

PLOT DATE: 5/5/2006  
 DRAWN BY: R. Bullock  
 CHECKED BY:  
 SHEET II OF 99