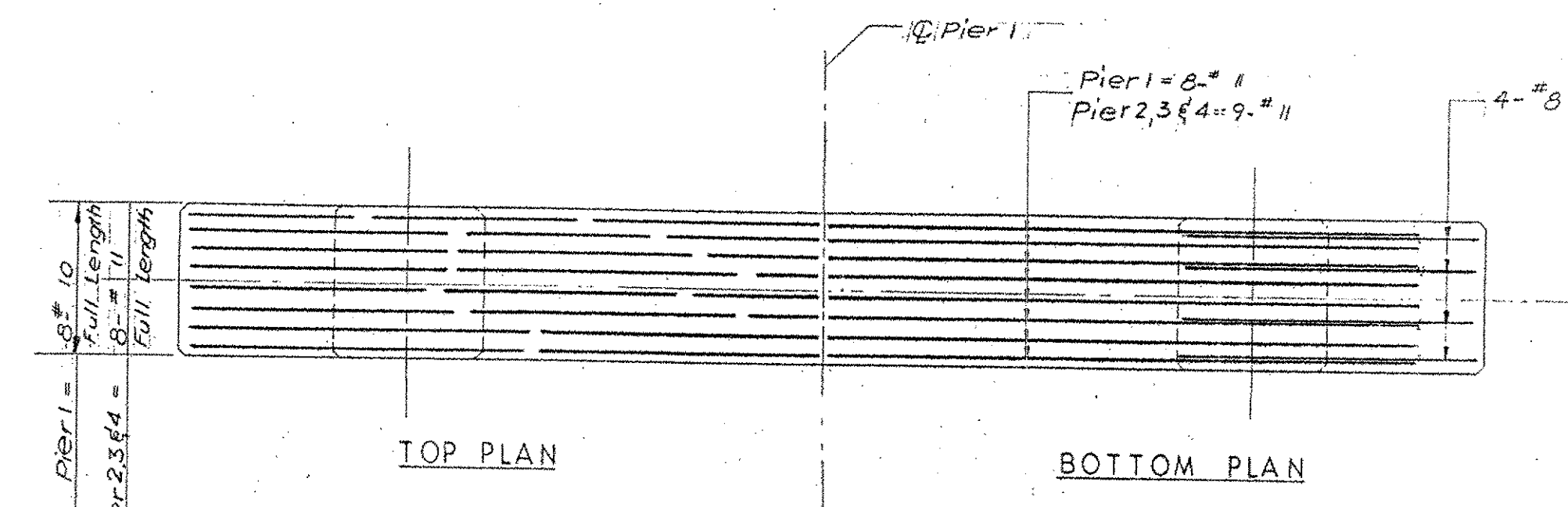


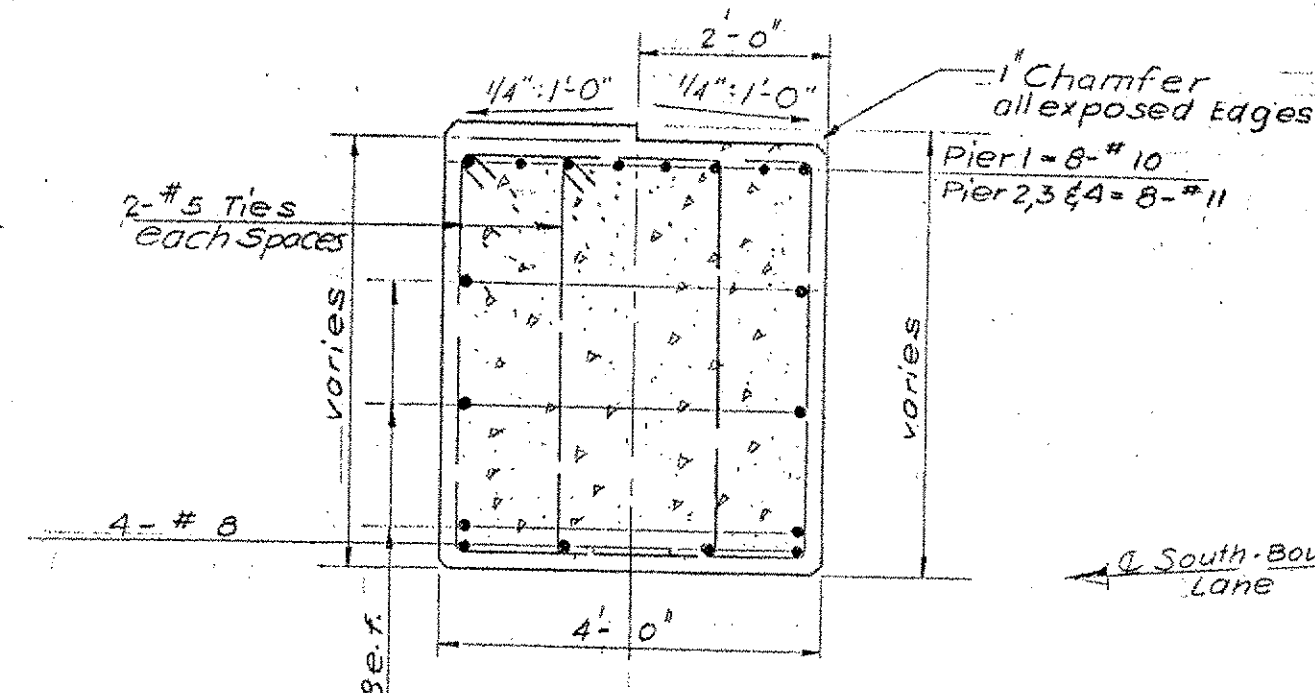
ESTIMATED QUANTITIES

Conc. Class	N.B.	Pier 1			Pier 2			Pier 3			Pier 4		
		Neat	Overrun	Total	Neat	Overrun	Total	Neat	Overrun	Total	Neat	Overrun	Total
Conc. Class B	N.B.	148	6	154	205	8	213	202	8	210	189	8	197
Asph.-Asb. Coat	N.B.	15	1	16	15	1	16	15	1	16	15	1	16
	S.B.	148	6	154	205	8	213	202	8	210	189	8	197
	S.B.	15	1	16	15	1	16	15	1	16	15	1	16

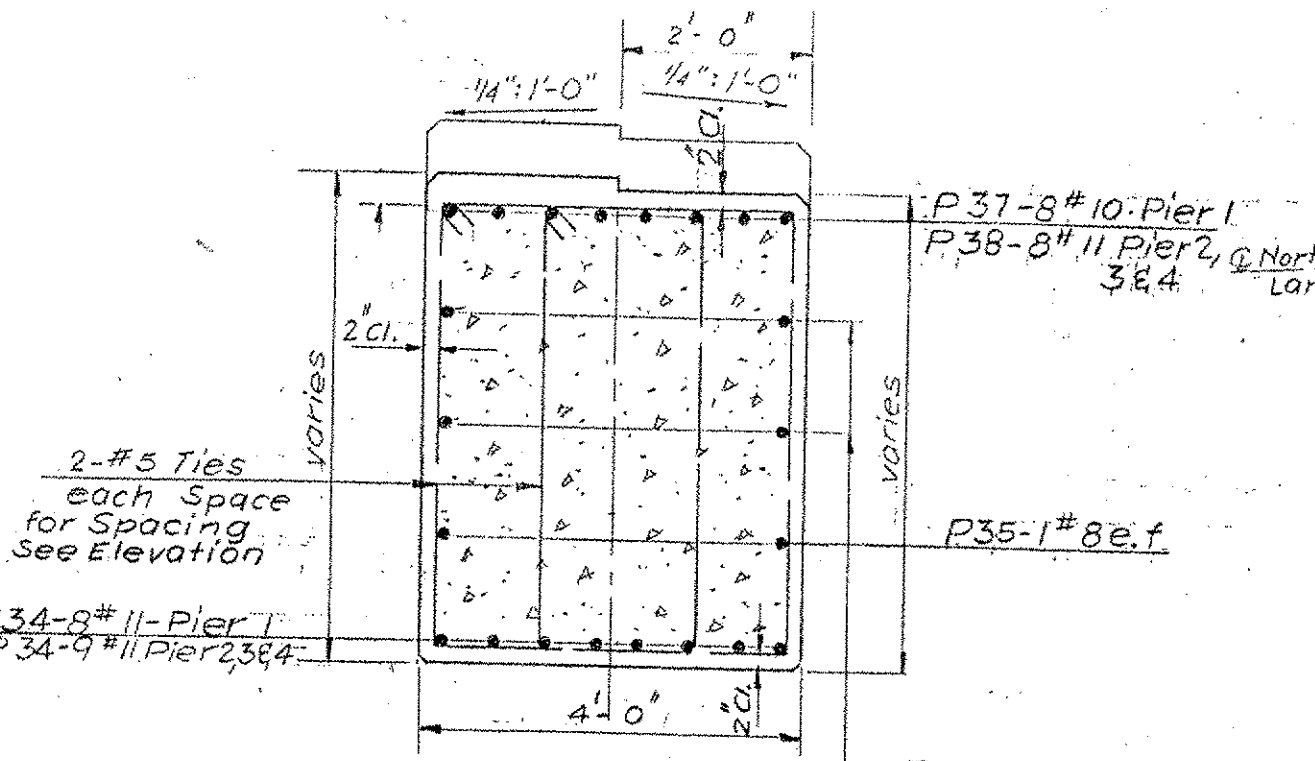
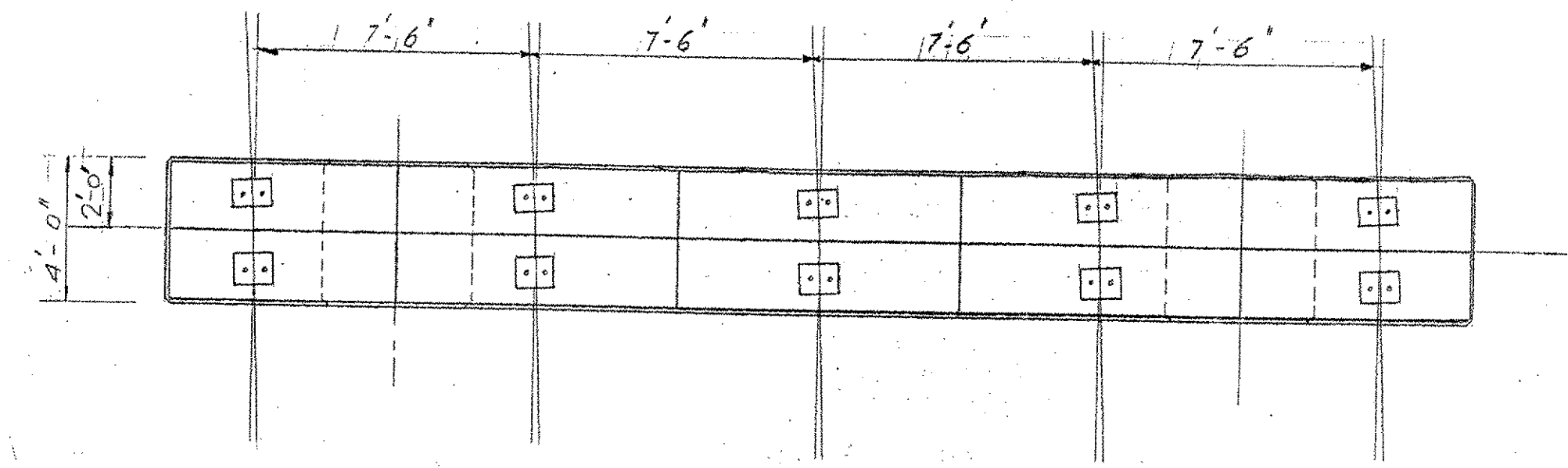


BEAM REINFORCEMENT

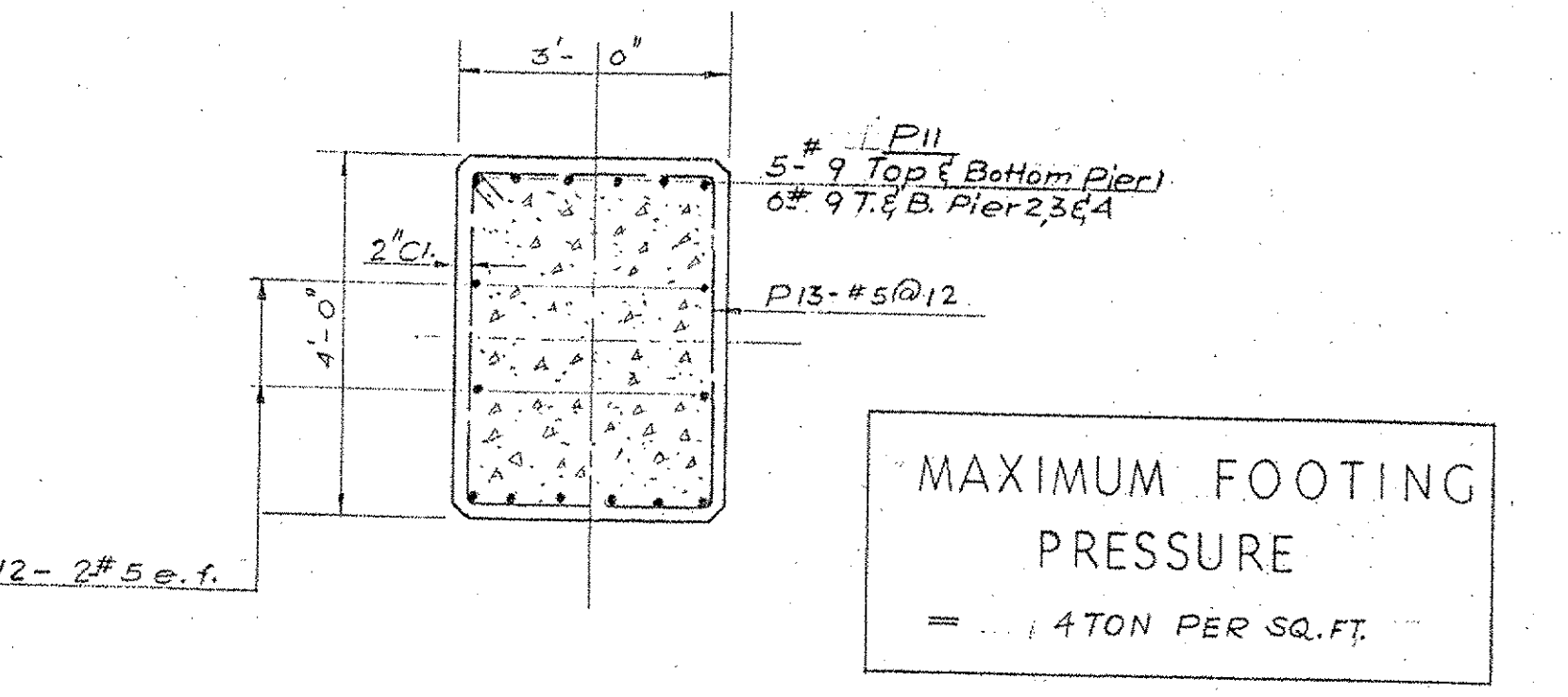
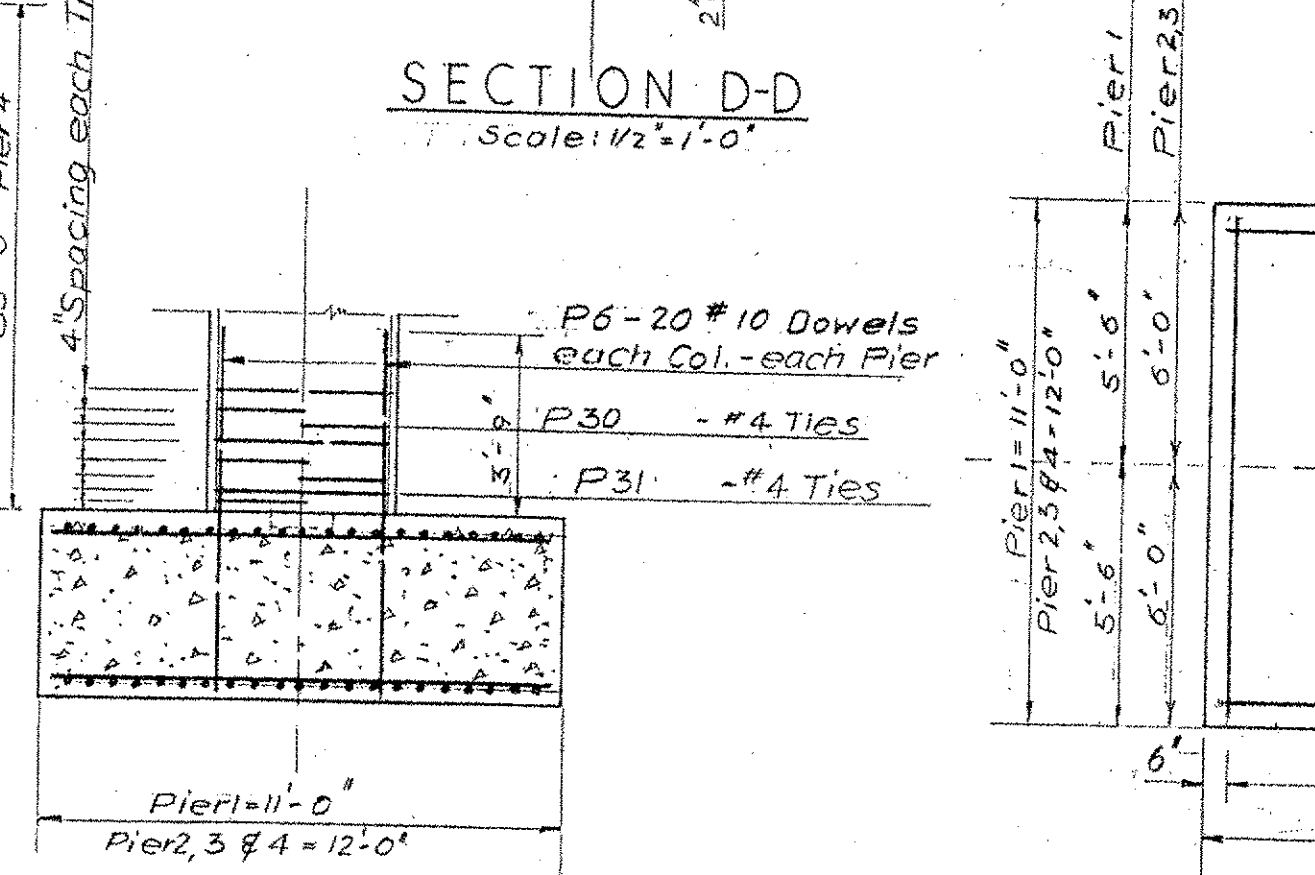
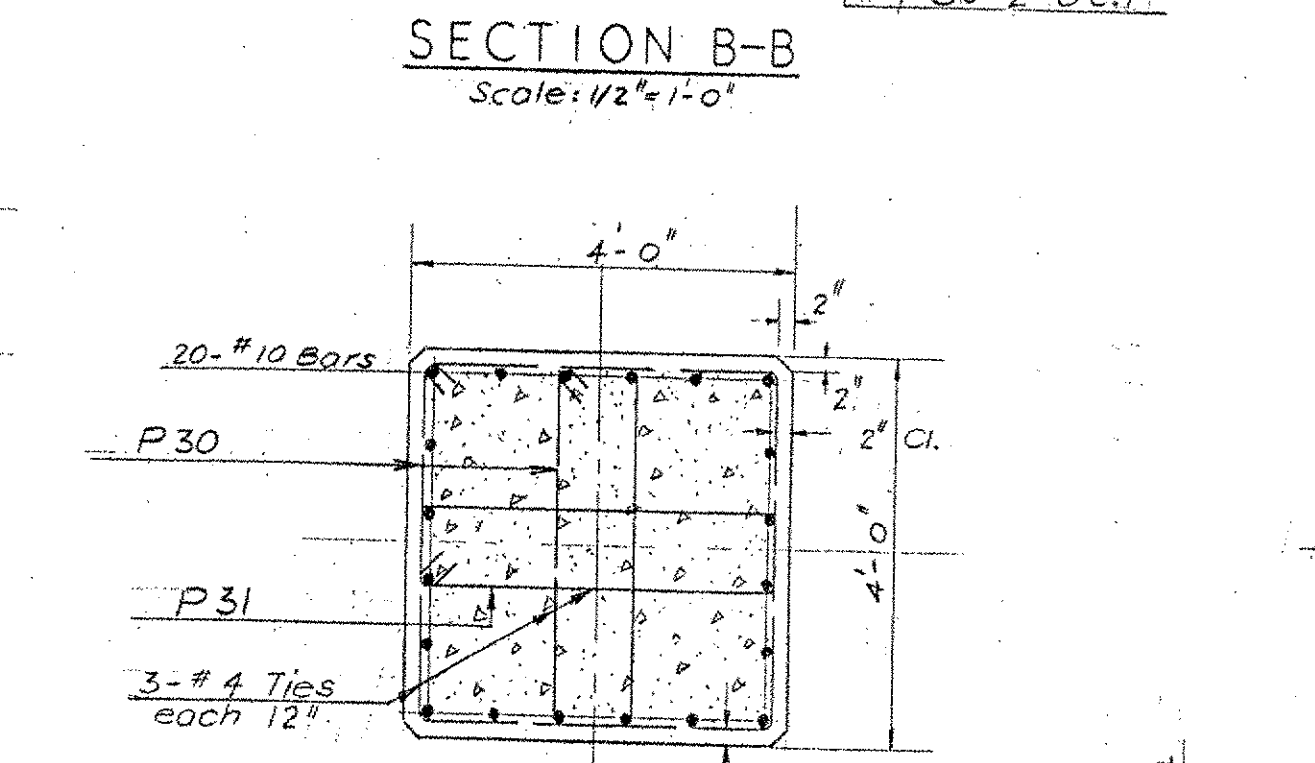
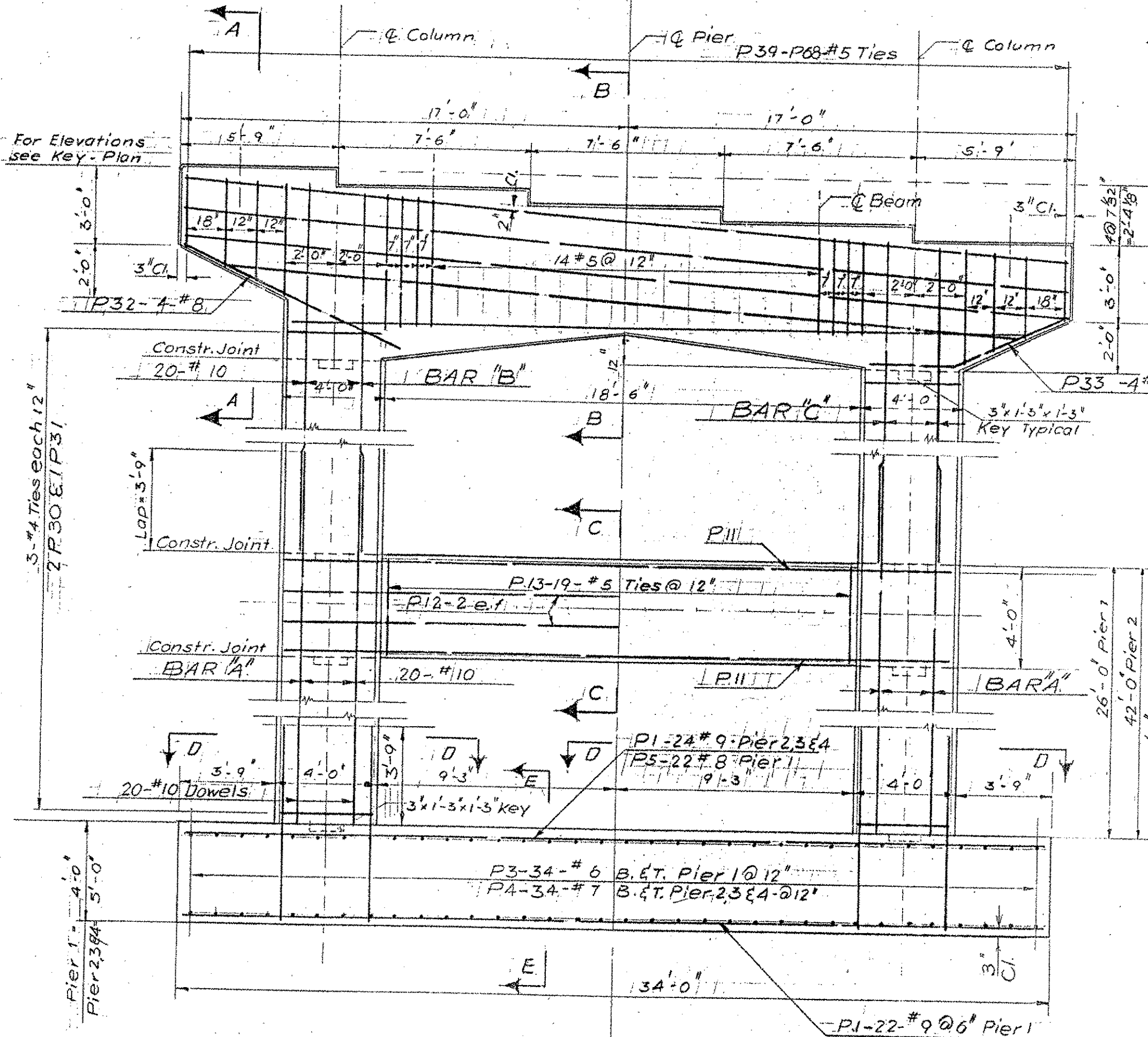
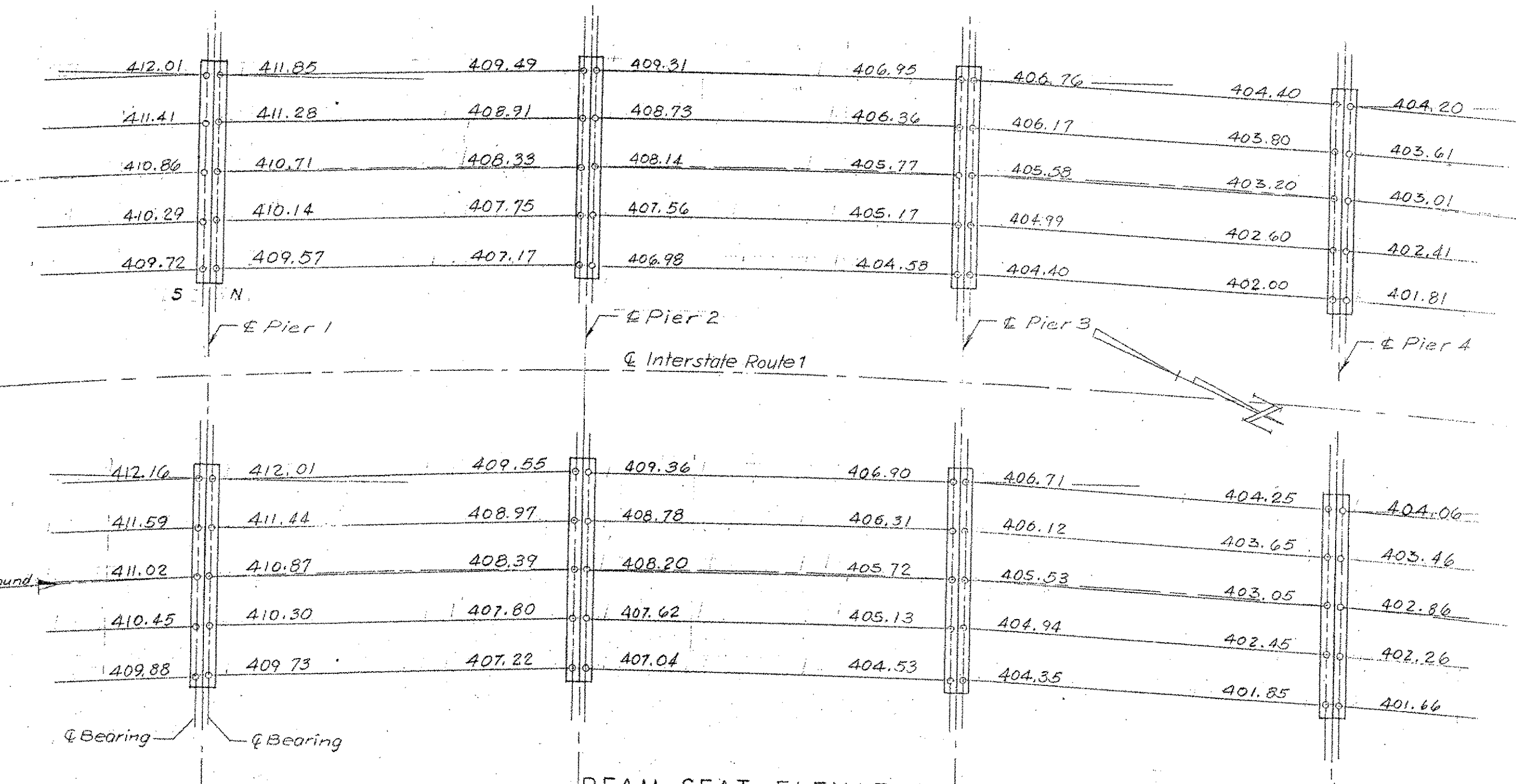
Scale: 1/4" = 1'-0"



Note: All Bridge Seats to be sloped 1/4" per foot and coated with Asphaltic-Asbestos Coating Item 407



2-#5 Ties each Space for Spacing See Elevation



MAXIMUM FOOTING PRESSURE  
= 4 TON PER SQ. FT.

ELEVATIONS  
BOTTOM OF FOOTING

PIER 1	353.9
PIER 2	318.9
PIER 3	318.9
PIER 4	326.9

COLUMN BARS

Pier	Bar A	Bar B	Bar C
1 S.B.	P 7	P 14	P 15
1 N.B.	P 7	P 16	P 17
2 S.B.	P 8	P 18	P 19
2 N.B.	P 8	P 20	P 21
3 S.B.	P 9	P 22	P 23
3 N.B.	P 9	P 24	P 25
4 S.B.	P 10	P 26	P 27
4 N.B.	P 10	P 28	P 29

VERMONT  
STATE HIGHWAY DEPARTMENT  
TOWN OF BRATTLEBORO  
INTERSTATE ROUTE 1  
WHETSTONE BROOK BRIDGE  
PIER DETAILS

WM.H.Mc FARLAND  
ENGINEER  
BINGHAMTON, NY

1958 RECORD PLANS  
INCLUDED FOR REFERENCE PURPOSES ONLY

DESIGNED: E.W.C. CHECKED: F.W.C. DATE: 8-10-57  
DRAWN: H.J. IN CHARGE: H.G.C. SCALE: AS NOTED  
PROJECT NO: 91-1(2) SHEET 14 OF 15