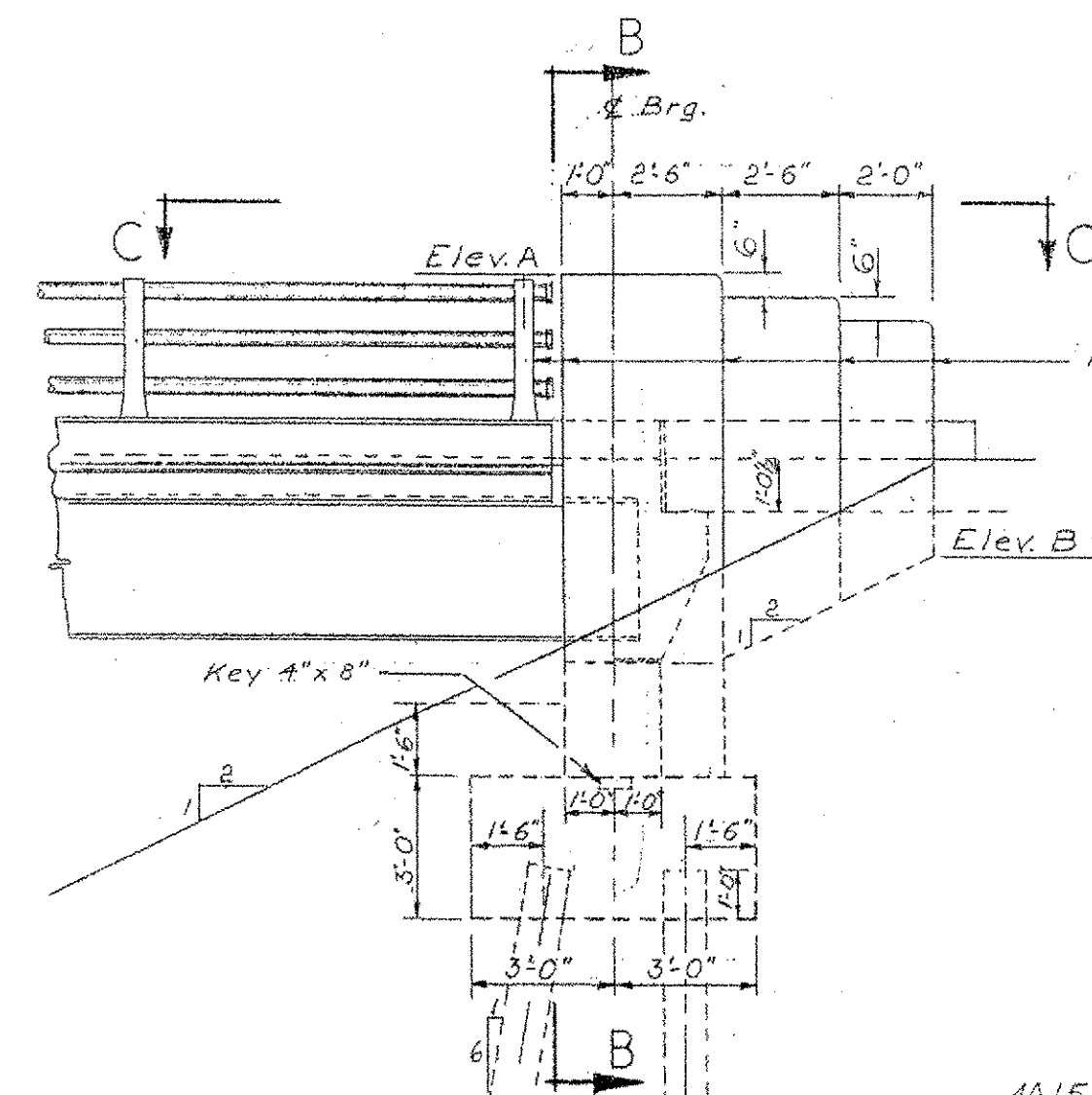
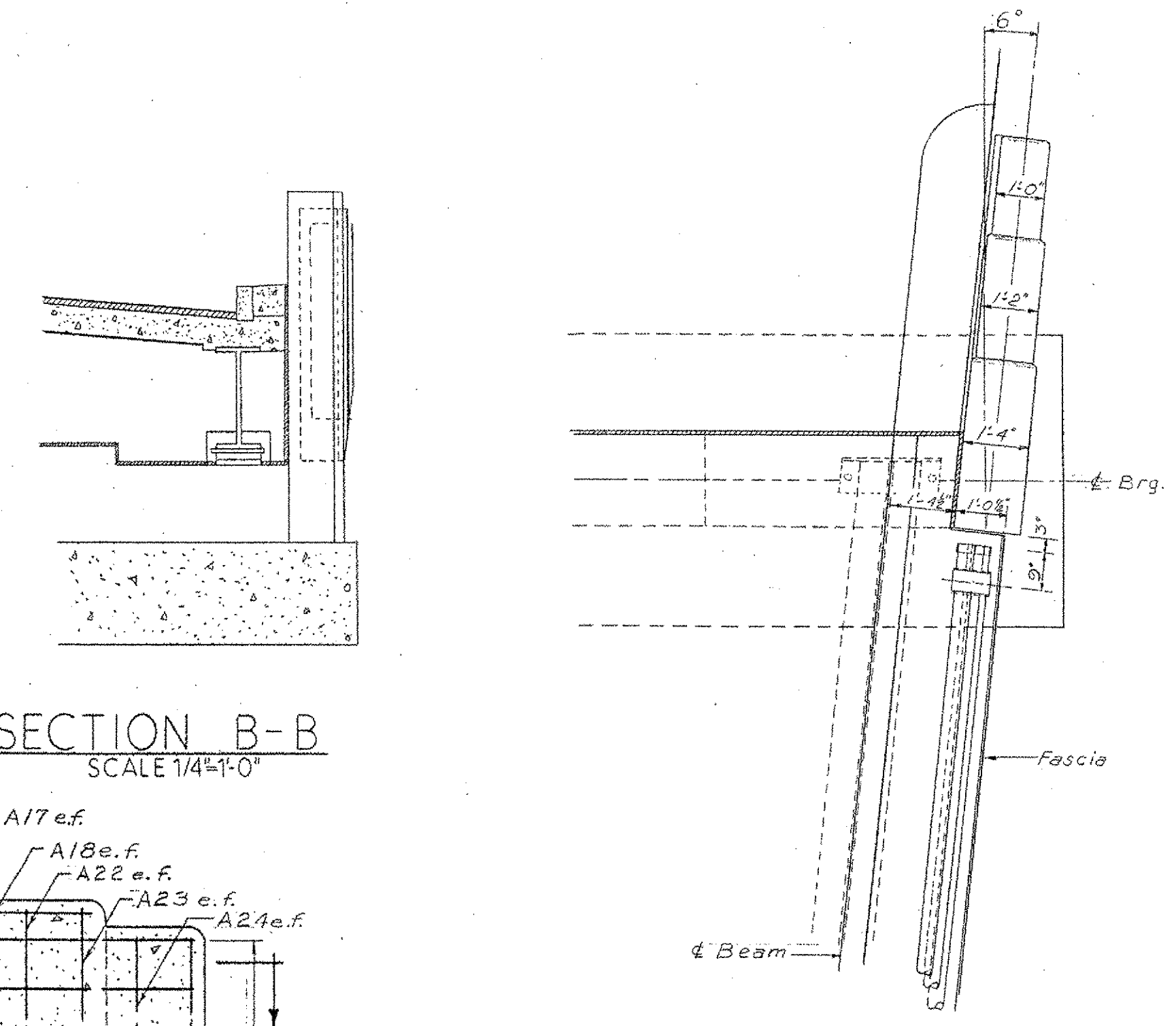


ELEVATION
SCALE 1/4"=1'-0"

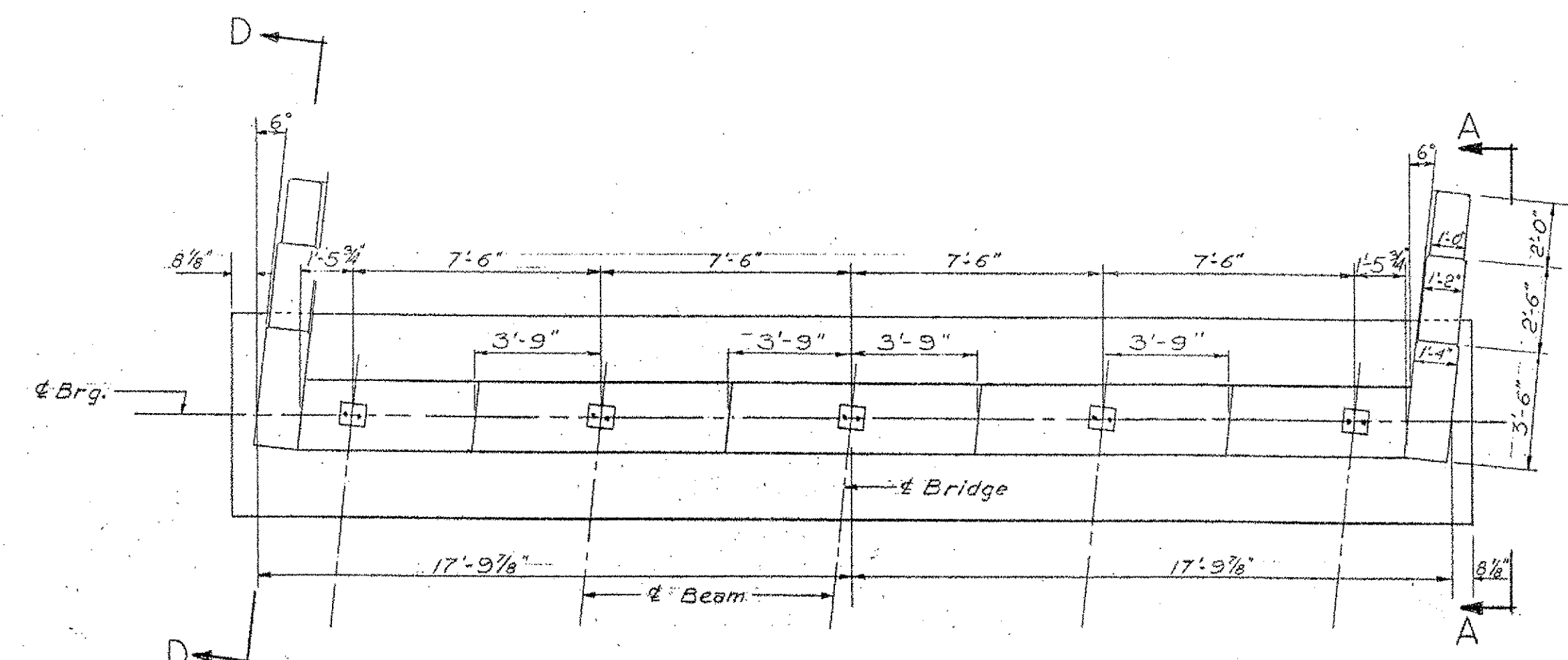


ELEVATION A-A
SCALE 1/4"=1'-0"

Note: Railing Posts & Pylon lines to be normal to grade.

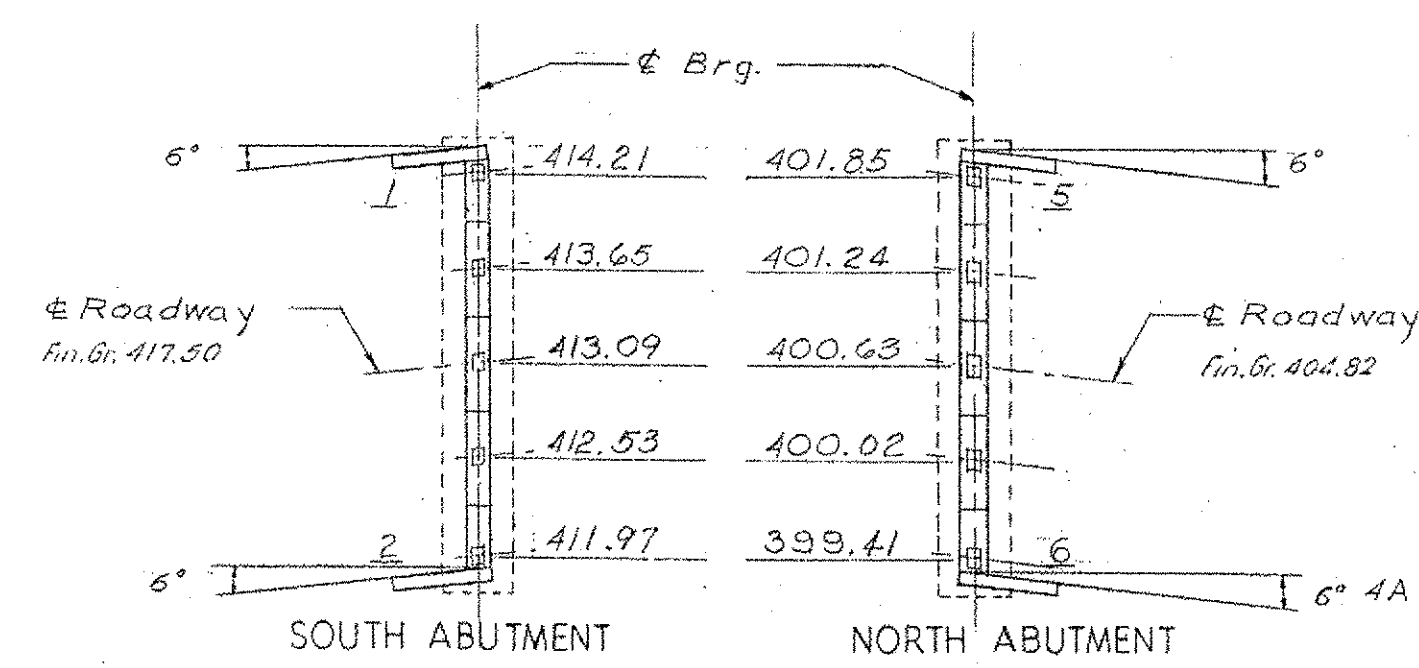


PLAN C-C
SCALE 3/8"=1'-0"

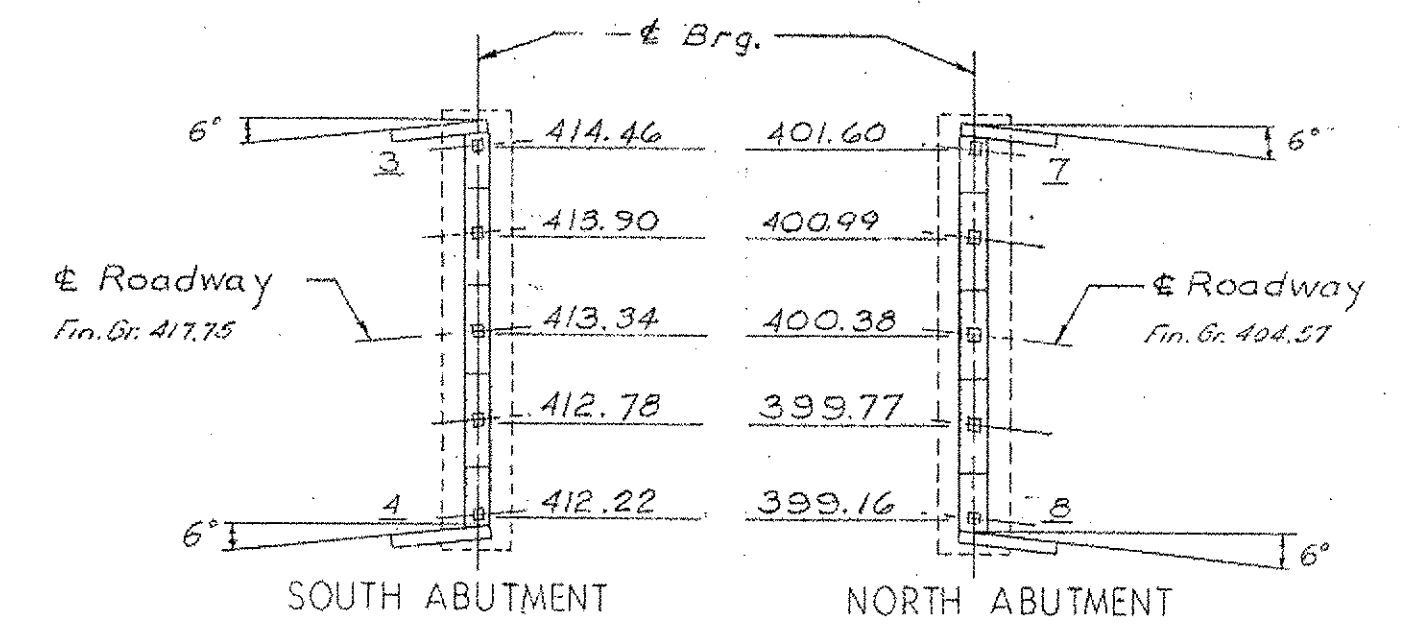


ABUTMENT PLAN
SCALE 1/4"=1'-0"

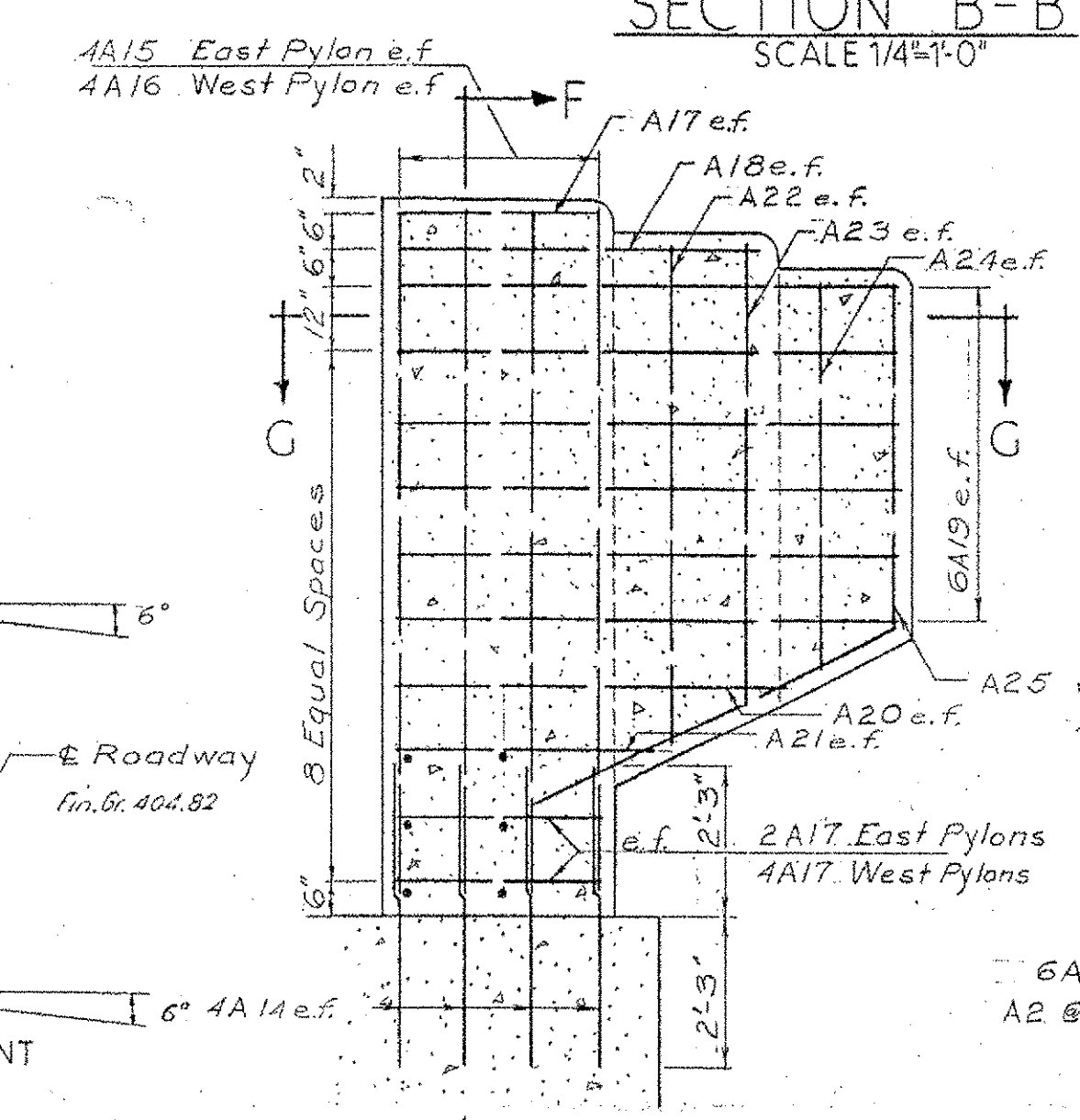
North Abutment Shown
South Abutment Opposite Hand



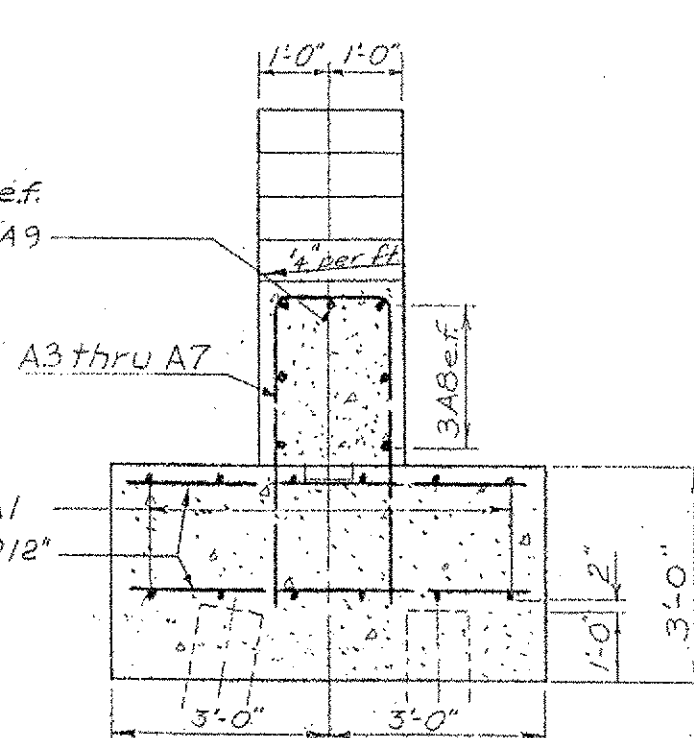
BEAM SEAT ELEVATIONS
SOUTHBOUND
NO SCALE



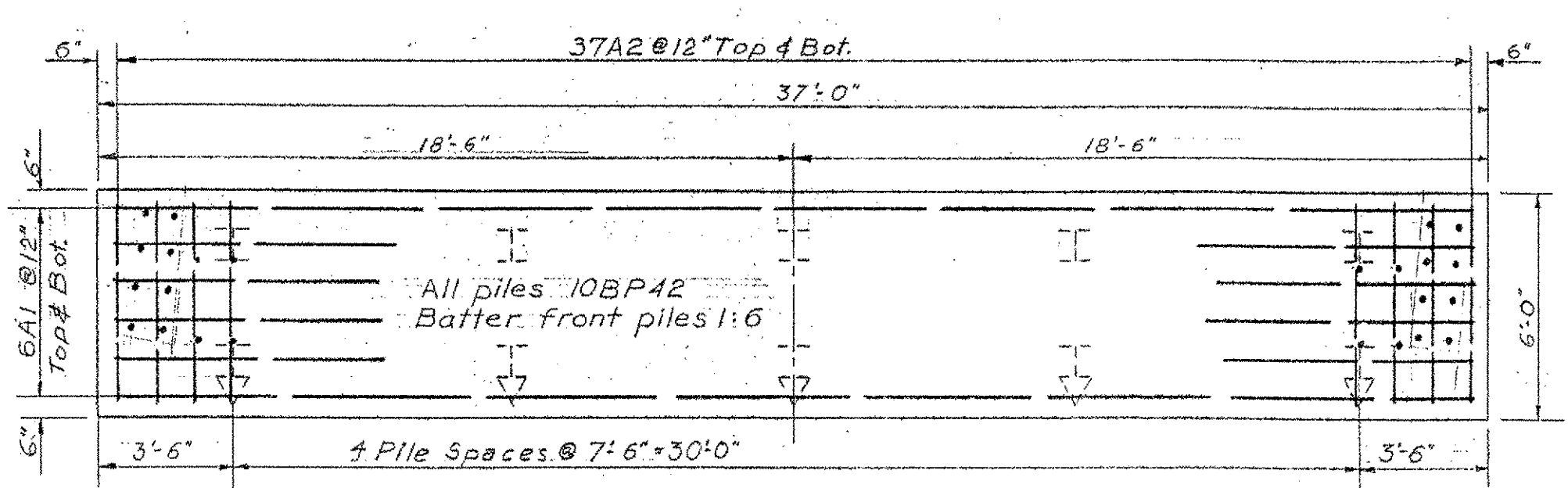
BEAM SEAT ELEVATIONS
NORTHBOUND
NO SCALE



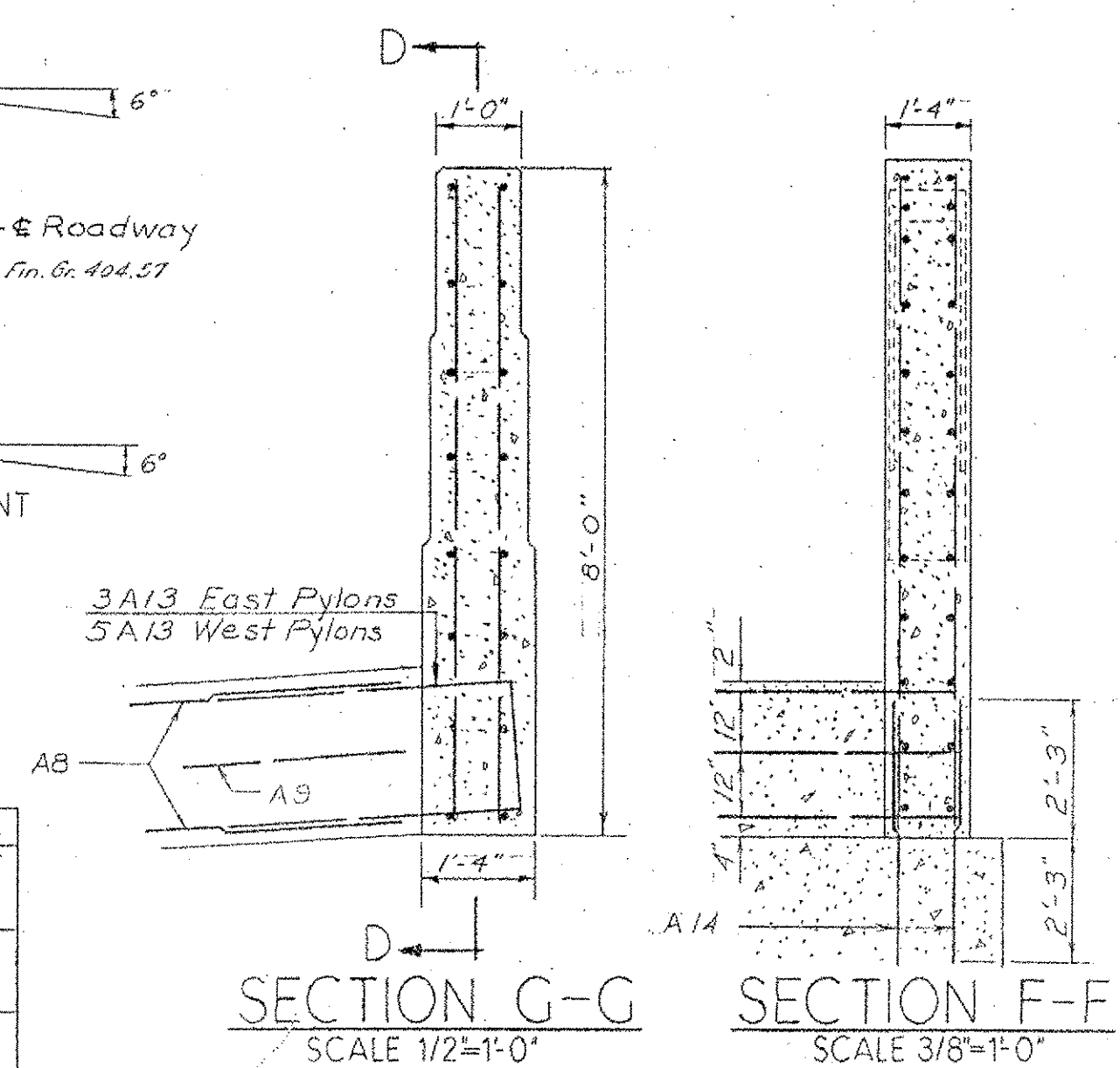
SECTION D-D
SCALE 3/8"=1'-0"



SECTION E-E
SCALE 3/8"=1'-0"



FOOTING PLAN
SCALE 1/4"=1'-0"



SECTION G-G
SCALE 1/2"=1'-0"

SECTION F-F
SCALE 3/8"=1'-0"

Note:
All reinforcement shall be size #5.
All piles shall be driven to a minimum bearing capacity of 37 tons.
For General Notes see Sheet 1.
All Bridge Seats to be sloped 1/4" per foot and coated with Asphaltic-Asbestos Coating Item 407.

ESTIMATED QUANTITIES													
Item	Unit	N.W. Abutment			N.E. Abutment			S.W. Abutment			S.E. Abutment		
		Neat	Overrun	Total	Neat	Overrun	Total	Neat	Overrun	Total	Neat	Overrun	Total
Conc. Class 'B'	cu yd	40	2	42	40	2	42	40	2	42	40	2	42
Asph. Aeb. Coat.	sq yd	4	0	4	4	0	4	4	0	4	4	0	4
10BP42 Piles	no	800	0	800	800	0	800	400	0	400	200	0	200

Elevation	A	B	C
1	422.7	416.4	406.5
2	420.5	414.2	
3	423.0	416.7	406.7
4	420.7	414.4	
5	410.2	403.9	393.9
6	407.7	401.4	
7	409.9	403.6	393.7
8	407.5	401.2	

1958 RECORD PLANS
INCLUDED FOR REFERENCE PURPOSES ONLY

VERMONT
STATE HIGHWAY DEPARTMENT
TOWN OF BRATTLEBORO
INTERSTATE ROUTE 1

WHETSTONE BROOK BRIDGE

ABUTMENT DETAILS

WM. H. Mc FARLAND
ENGINEER
BINGHAMTON, N.Y.

DESIGNED E.G.P. CHECKED K.W.R. DATE 6-19-57
DRAWN H.B. & D.A.S. IN CHARGE H.G. COLES SCALE AS NOTED
PROJECT NO. I-91-1(2) SHEET 13 OF 15
BRIDGE SHEET 3 OF 5