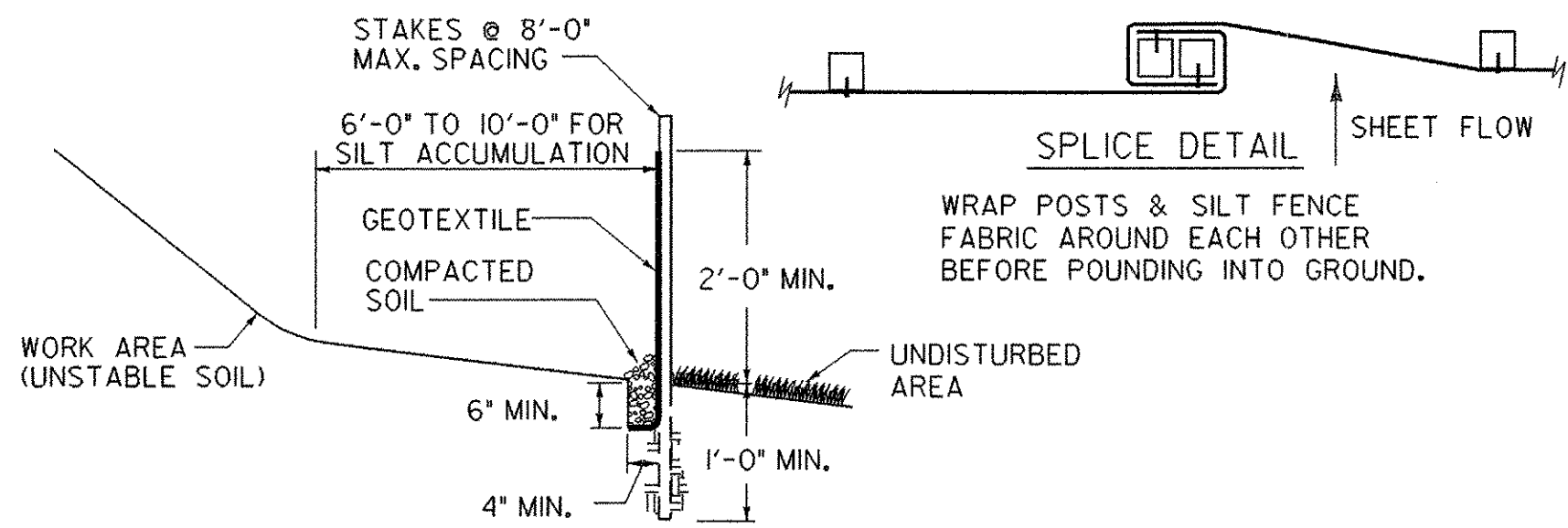


NOTE: REFER TO LATEST REVISIONS OF VERMONT STATE STANDARDS "T-1" AND "T-2" AND THE "VERMONT HANDBOOK FOR SOIL EROSION AND SEDIMENT CONTROL FOR CONSTRUCTION SITES" FOR ADDITIONAL EROSION CONTROL MEASURES.

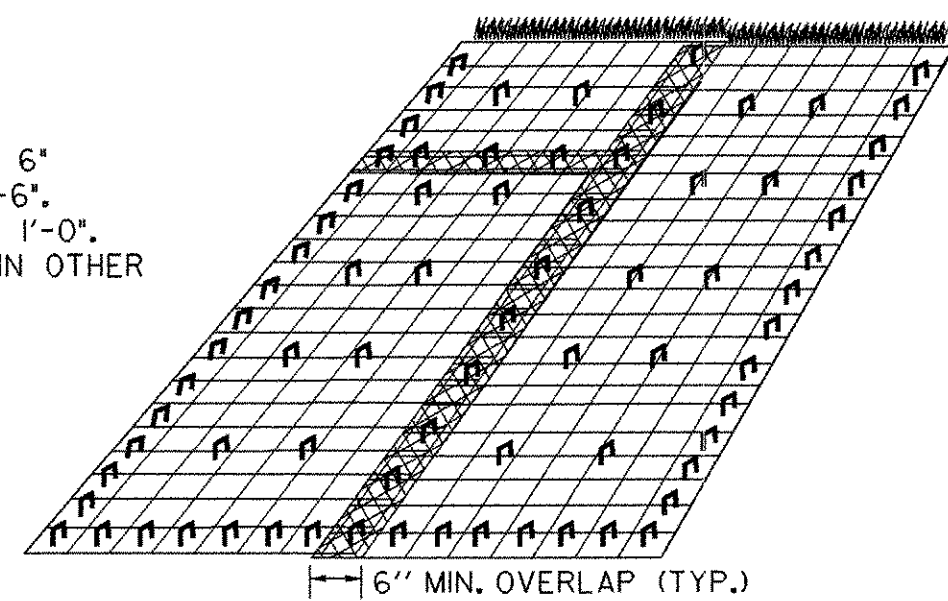
HAY BALES AND SILT FENCE ARE NOT TO BE USED ACROSS AREAS OF CONCENTRATED FLOW.



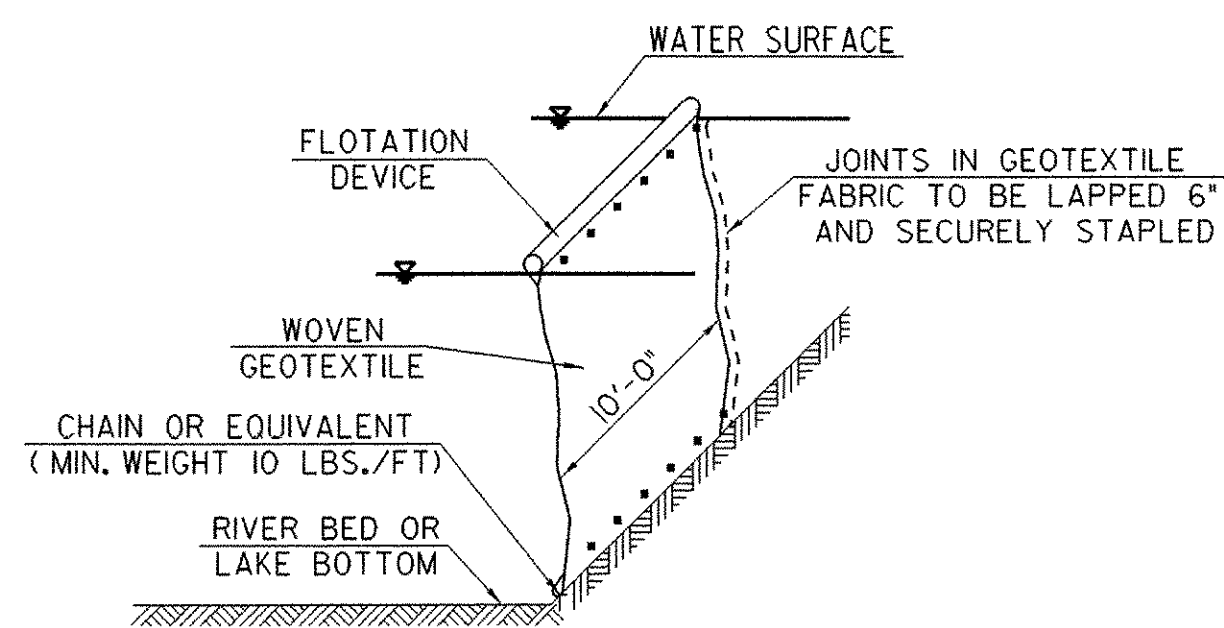
DETAIL "A"
SILT FENCE

- NOTES:
- DO NOT USE SILT FENCE IN STREAMS, DRAINAGE DITCHES, OR AREAS OF CONCENTRATED FLOW.
 - BACK WITH STAKED-IN-PLACE HAY BALES OR WIRE FENCE IF ADDITIONAL SUPPORT IS NEEDED.
 - MUST BE REMOVED WHEN SOIL IS STABILIZED.

- NOTES:
- ALL FABRIC OVERLAPS SHALL BE 6" MINIMUM WITH STAPLES EVERY 1'-6".
 - STAPLE EDGES OF FABRIC EVERY 1'-0".
 - USE 3'-0" MAX. STAPLE SPACING IN OTHER AREAS.
 - SEE "EROSION MATTING FOR DITCHES" DETAIL FOR ANCHORING AT TOPS OF SLOPES.

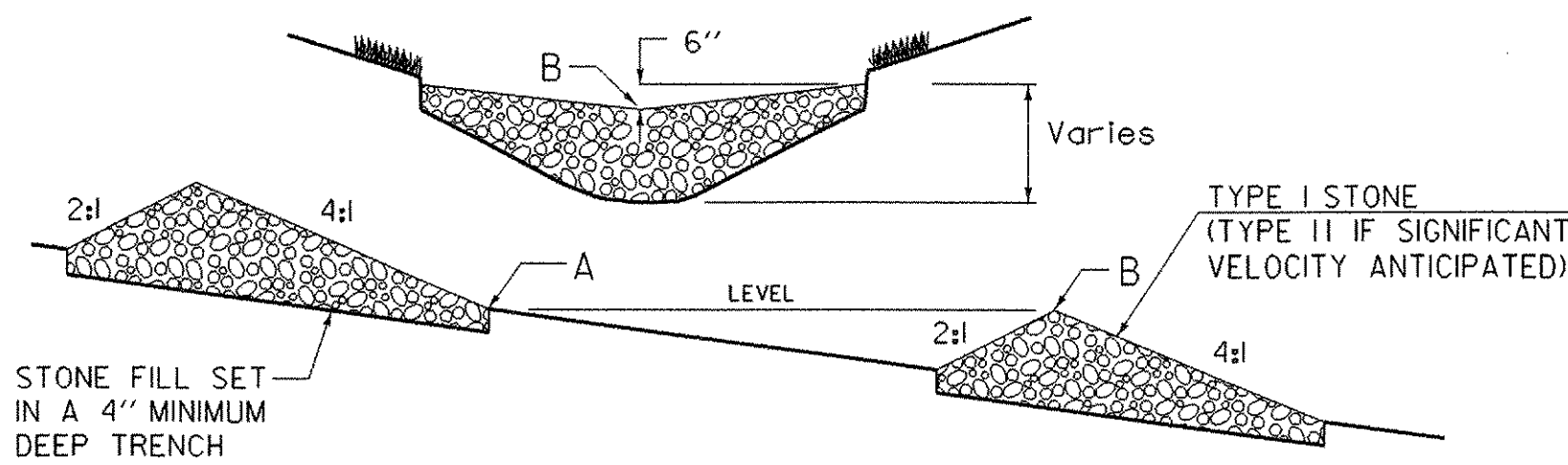


DETAIL "C"
EROSION MATTING FOR SLOPES STEEPER THAN 1:3



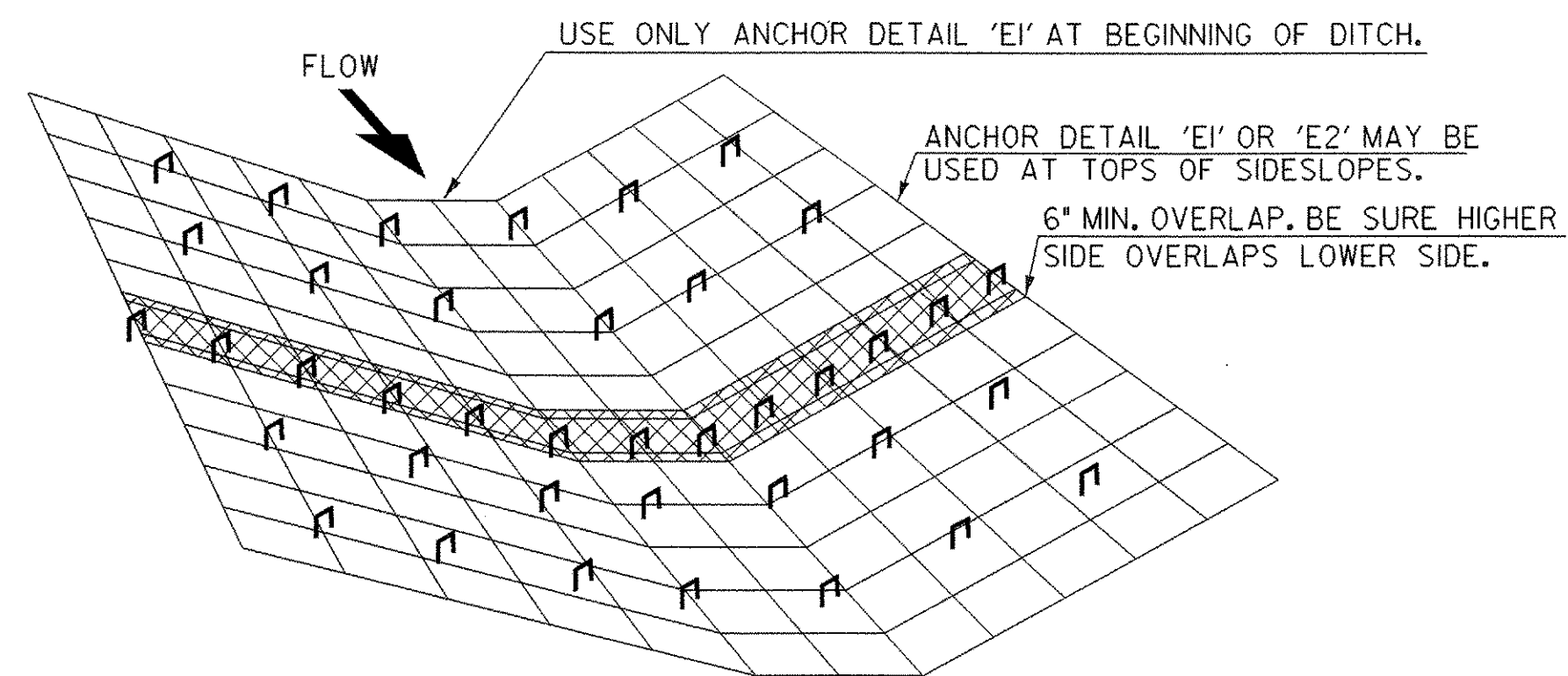
DETAIL "F"
FILTER CURTAIN

- NOT TO BE USED ACROSS THE FLOW OF WATER
- HEIGHT SHOULD BE SUFFICIENT TO ALLOW FOR VARIATIONS IN THE BOTTOM AND RISING WATER
- ANCHOR FIRMLY IN PLACE AS NEEDED
- INSTALL PRIOR TO EARTH DISTURBING ACTIVITIES AND/ OR INSTALLATION OF COFFERDAM WHERE APPLICABLE
- LEAVE IN PLACE UNTIL UP-SLOPE AREAS ARE STABLE AND COFFERDAM IS REMOVED
- USE CARE DURING REMOVAL TO PREVENT THE RELEASE OF CAPTURED SEDIMENT AS MUCH AS POSSIBLE



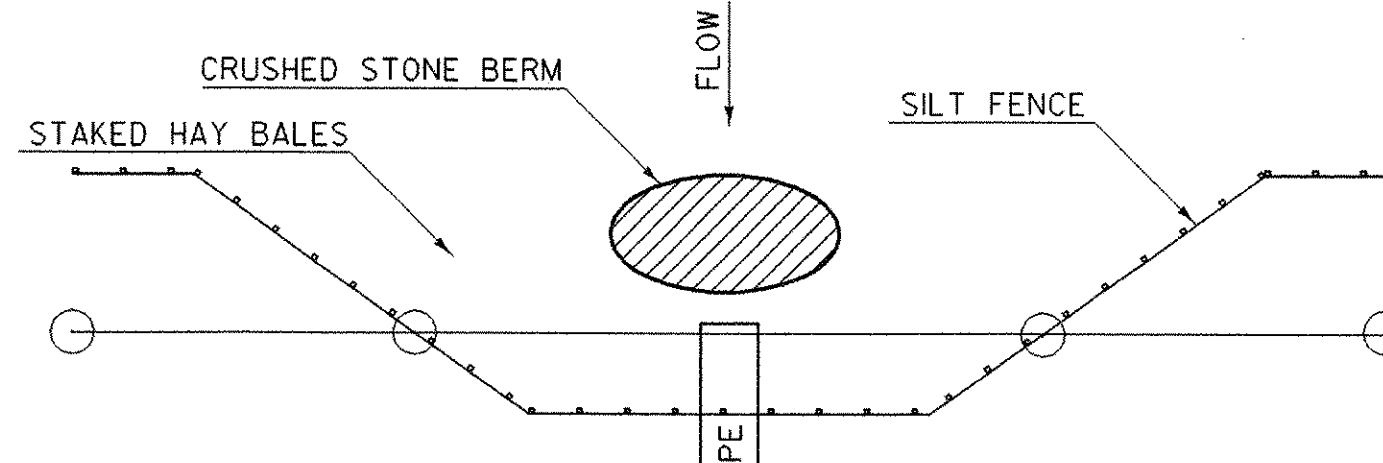
DETAIL "B"
TEMPORARY CRUSHED STONE BERM

- NOTES:
- STONE BERMS TO BE USED DURING ESTABLISHMENT OF GRASS LINED DRAINAGE DITCHES
 - LOCATE DOWNSTREAM STRUCTURE SUCH THAT POINT "B" IS APPROXIMATELY LEVEL WITH THE LOWEST GROUND ELEVATION "A" OF THE UPSTREAM STRUCTURE.

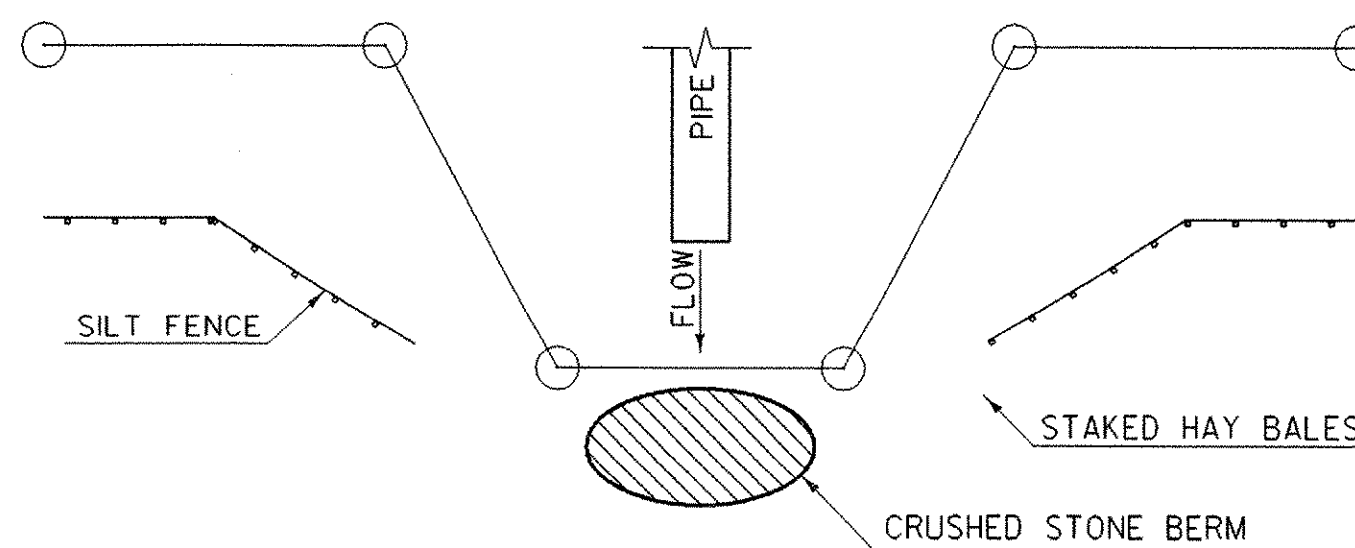


DETAIL "D"
EROSION MATTING FOR DITCHES

- TO BE USED WHERE SLOPE OF DITCHLINE RANGES FROM 1% - 2.5%. SLOPES EXCEEDING 2.5% SHALL BE LINED WITH STONE FILL, TYPE I.
- OVERLAPS SHALL BE 150 MINIMUM IN THE DIRECTION OF FLOW AND STAPLED EVERY 500 MIN. THROUGH BOTH FABRICS.
- USE 1000 MAX STAPLE SPACING IN OTHER AREAS.



DETAIL "G"
EXISTING PIPE INLET CONTROL



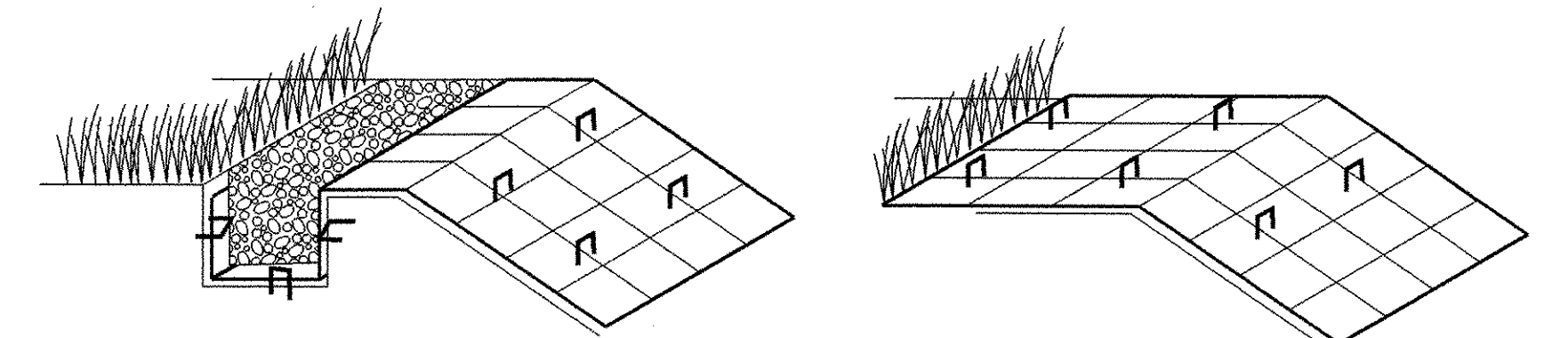
DETAIL "H"
EXISTING PIPE OUTLET CONTROL

**SEEDING FORMULA
RURAL AREAS**

% WT.	LBS./A.	NAME	PUR %	GERM %
37.5	22.5	CREeping RED FESCUE	98	85
37.5	22.5	TALL FESCUE	95	90
5.0	3.0	RED TOP	95	90
15.0	9.0	BIRDSFOOT TREFOIL	98	85
5.0	3.0	ANNUAL RYEGRASS	95	85
100.0	60.0			

GENERAL NOTES

- SEED MIXTURE: SHALL NOT HAVE A WEED CONTENT EXCEEDING 0.40% BY WEIGHT AND SHALL BE FREE OF ALL NOXIOUS SEED.
- SEED: TO BE APPLIED PER SEEDING FORMULAS OR AS DIRECTED BY THE ENGINEER.
- FERTILIZER: FORMULA 10-20-10, TO BE USED WITH SEED, APPLIED AT THE RATE OF 500 LBS./ACRE. (HYDRO SEEDERS MAY USE 19-19-19 FORMULA).
- AGRICULTURAL LIMESTONE: TO BE APPLIED AT THE RATE OF 2 TONS/ACRE, OR AS DIRECTED BY THE ENGINEER.
- HAY MULCH: TO BE PLACED ON EARTH SLOPES AT THE RATE OF 2 TONS/ACRE, OR AS DIRECTED BY THE ENGINEER.
- TOPSOIL: TO BE USED WITH SEED AS INDICATED ON THE PLANS, OR AS DIRECTED BY THE ENGINEER.



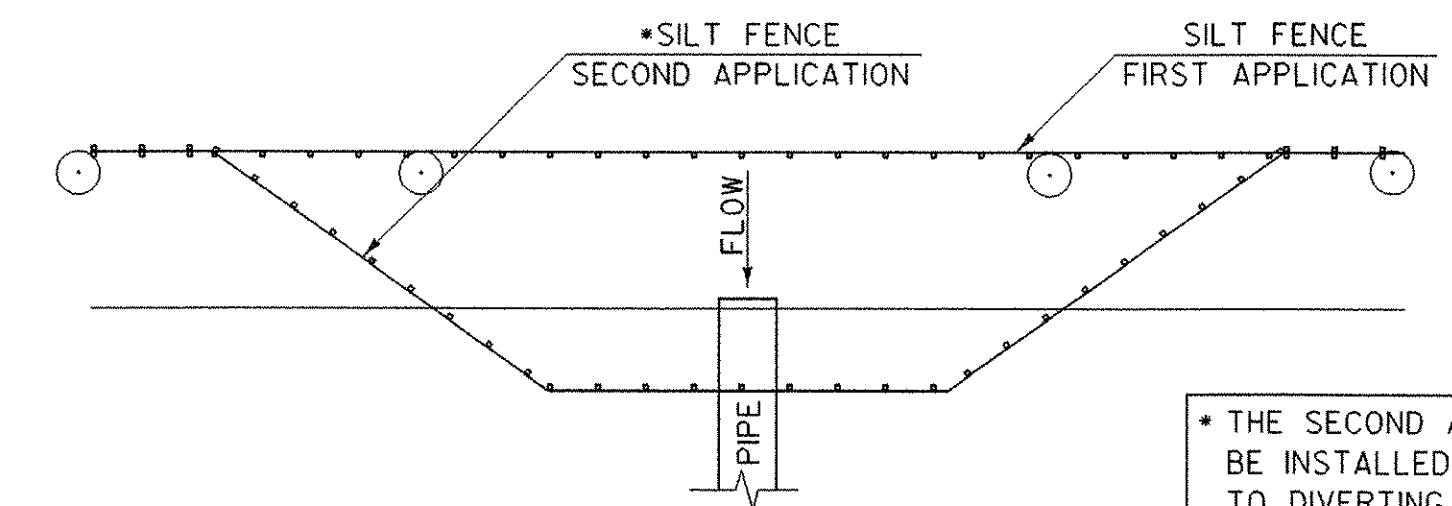
ANCHOR DETAIL 'E1'

INSERT & STAPLE FABRIC INTO 6" X 6" TRENCH PRIOR TO BACKFILLING & COMPACTING SOIL. USE 3 STAPLE PATTERN EVERY 20".

ANCHOR DETAIL 'E2'

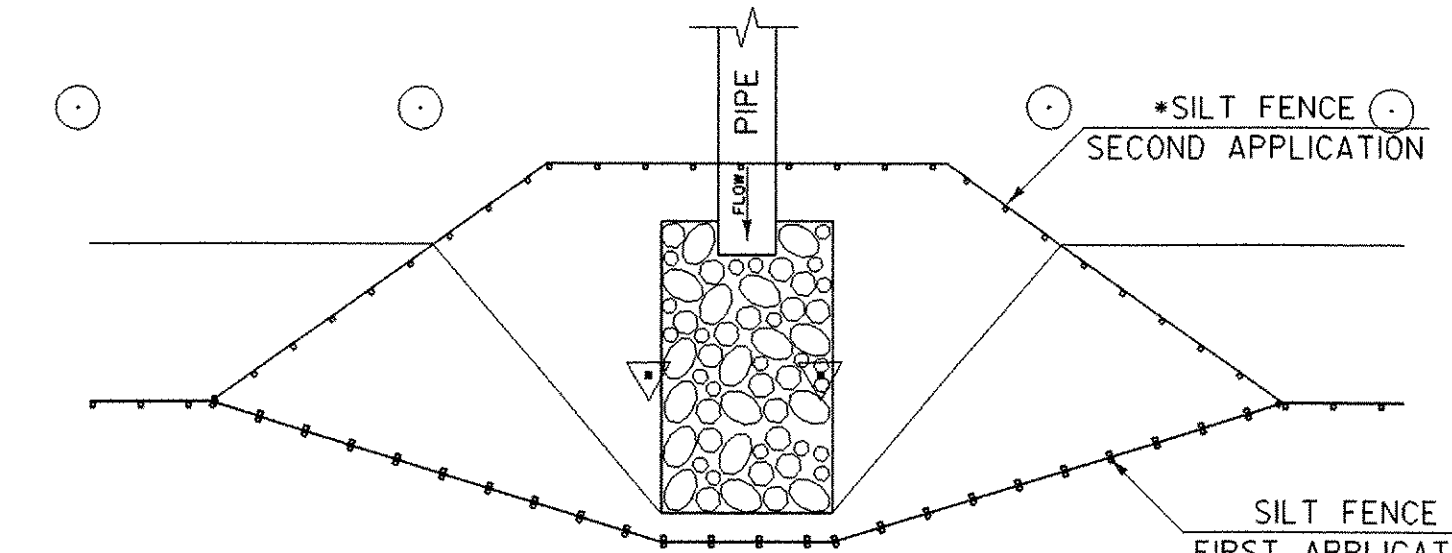
IF THE TOP OF SLOPE IS RELATIVELY FLAT EXTEND MATERIAL APPROXIMATELY 24" AND STAPLE EVERY 20" MINIMUM.

DETAIL "E"
ANCHOR DETAILS FOR EROSION MATTING



DETAIL "I"
PROPOSED PIPE INLET CONTROL

* THE SECOND APPLICATION OF SILT FENCE IS TO BE INSTALLED (REMOVE FIRST APPLICATION) PRIOR TO DIVERTING FLOW INTO NEW PIPE FOR BOTH PROPOSED INLET AND OUTLET CONTROLS



DETAIL "J"
PROPOSED PIPE OUTLET CONTROL

NOTE: DETAILS NOT TO SCALE

PROJECT NAME: BRATTLEBORO
PROJECT NUMBER: ST 091-(52)

FILE NAME: 03A050/STR/s03a050.DGN
PROJECT LEADER: S. FARNSWORTH
DESIGNED BY: S. FARNSWORTH
s03a050ecdet.1

PLOT DATE: 24-JUN-2004
DRAWN BY: M. FOWLER
CHECKED BY: S. FARNSWORTH
SHEET 8 OF 15

EROSION CONTROL DETAILS