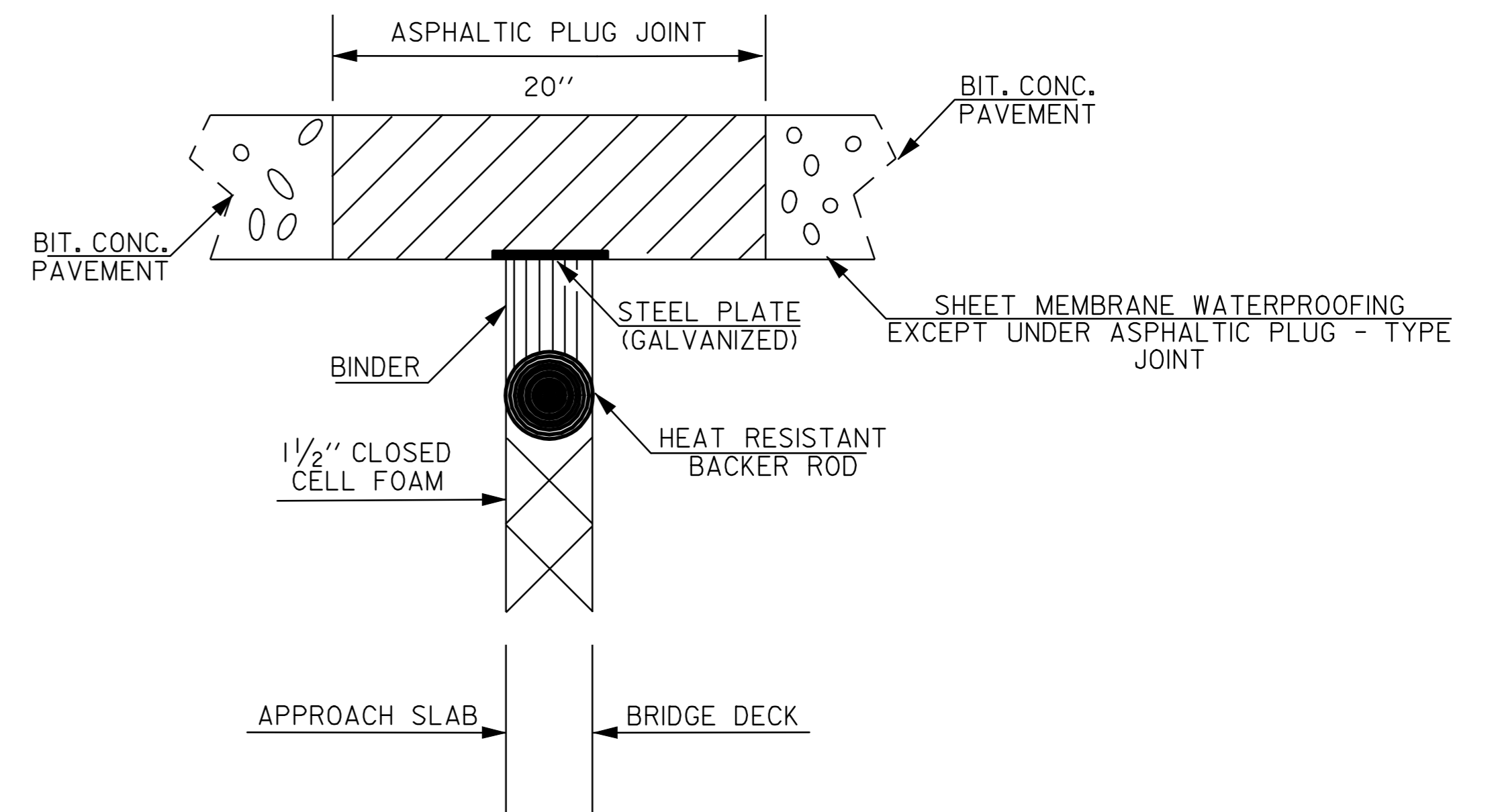


RAMP PAVEMENT TYPICAL

LOCATION

EXIT 8 OFF & ON RAMPS - SEE SHEET 15 FOR DETAILS
 EXIT 9 OFF & ON RAMPS - SEE SHEET 16 FOR DETAILS



ASPHALTIC PLUG-TYPE JOINT DETAIL - ITEM 516.10

REFER TO SPECIAL PROVISIONS FOR ADDITIONAL DETAILS

TOWN	BRIDGE	EXISTING CONDITION AS PER BRIDGE INVENTORY	TREATMENT	LENGTHS
MONTPELIER M. M. 53.64	BR. # 42S 13 SIMPLE SPAN	2' +/- OF EXISTING PAVEMENT WITH MEMBRANE ON BRIDGE	2 PLUG JOINTS REQUIRED DO NOT COLD PLANE	2 @ 30'
MIDDLESEX M. M. 58.71	BR. # 45S 3 SPAN BRIDGE	3' +/- OF EXISTING PAVEMENT WITH NO MEMBRANE ON BRIDGE	3 PLUG JOINTS REQUIRED COLD PLANE 1 1/4''	3 @ 38'
WATERBURY M. M. 63.532	BR. # 46S 5 SIMPLE SPAN BEAM BRIDGE	2' +/- OF EXISTING PAVEMENT WITH MEMBRANE ON BRIDGE	5 PLUG JOINTS REQUIRED COLD PLANE 1 1/4''	5 @ 28'
MONTPELIER M. M. 53.64	BR. # 42N 13 SIMPLE SPAN	2' - 3' +/- OF EXISTING PAVEMENT WITH MEMBRANE ON BRIDGE	2 PLUG JOINTS REQUIRED COLD PLANE 1 1/4''	2 @ 30'
MIDDLESEX M. M. 54.81	BR. # 43N 3 SPAN BRIDGE	2' +/- OF EXISTING PAVEMENT WITH MEMBRANE ON BRIDGE	1 PLUG JOINTS REQUIRED COLD PLANE 1 1/4''	1 @ 38'
MIDDLESEX M. M. 58.71	BR. # 45N 3 SIMPLE SPAN BEAM BRIDGE	2' +/- OF EXISTING PAVEMENT WITH MEMBRANE ON BRIDGE	3 PLUG JOINTS REQUIRED COLD PLANE 1 1/4''	3 @ 28'
				TOTAL 496'

NOTE: EXISTING PAVEMENT THICKNESSES ARE BASED ON BRIDGE INSPECTION AND FILE INFORMATION WHICH HAVE NOT BEEN FIELD VERIFIED.

**PROJECT
TYPICAL
SHEET 2**

PROJECT NAME: MONTPELIER - WATERBURY
 PROJECT NUMBER: IM 089-2(34)

FILE NAME: /pave/03a026/03a026.dgn PLOT DATE: 11-APR-2005 10:17
 PROJECT LEADER: DRAWN BY:
 DESIGNED BY: CHECKED BY:
 IPARM NAME: p03a026p2.1 SHEET 3 OF 23