

EXIT 3 - RAMP AB SOUTHBOUND ON/OFF RAMP

SEE STANDARDS E-191, E-192 AND E-193
FOR PAVEMENT MARKING GUIDELINES

TEMPORARY AND DURABLE 6" WHITE LINE

OFF RAMP 0+27 TO 1+15 SOLID LT (RAMP C)
ON RAMP 0+35 TO 1+39 SOLID RT (RAMP D)
ON RAMP 2+50 TO 5+11 SOLID RT (RAMP A)
ON RAMP 5+50 TO 12+95 SOLID LT (RAMP A)
OFF RAMP 5+50 TO 13+10 SOLID RT (RAMP B)
OFF RAMP 13+50 TO 14+00 DASHED RT (RAMP B)
I-91 609+00 TO 612+00 DASHED LT

TEMPORARY AND DURABLE 6" YELLOW LINE

ON RAMP 2+50 TO 5+11 SOLID LT (RAMP A)
OFF RAMP 5+50 TO 14+00 SOLID RT (RAMP B)
ON RAMP 5+50 TO 14+00 SOLID LT (RAMP A)

TEMPORARY AND DURABLE 12" WHITE LINE

OFF RAMP 0+75 TO 1+15 SOLID RT (RAMP C)
ON RAMP 0+85 TO 1+38 SOLID LT (RAMP D)
ON RAMP 5+11 TO 5+64 SOLID LT (RAMP A)
GORE STRIPES 12+95 TO 13+50 SOLID LT (RAMP A)
ON RAMP 12+95 TO 14+00 SOLID LT (RAMP A)
OFF RAMP 13+10 TO 13+50 SOLID RT (RAMP B)
I-91 612+00 TO 613+05 SOLID LT

TEMPORARY AND DURABLE LETTER OR SYMBOL

OFF RAMP 0+51 LT - "AHEAD" (RAMP C)
ON RAMP 0+39 RT - "ONLY" (RAMP D)
ON RAMP 0+51 RT - RIGHT TURN ARROW (RAMP D)
OFF RAMP 0+91 CL - "YIELD" (RAMP C)
OFF RAMP 13+35 RT - "YIELD" (RAMP B)
OFF RAMP 13+75 RT - "AHEAD" (RAMP B)

REHABING DI, CB OR MH

ON RAMP 3+63 RT (RAMP B) CLASS I
ON RAMP 4+92 RT (RAMP B) CLASS I
OFF RAMP 6+09 RT (RAMP B) CLASS I
OFF RAMP 7+59 RT (RAMP B) CLASS I

BITUMINOUS CONCRETE GUTTERS AND TRAFFIC ISLANDS

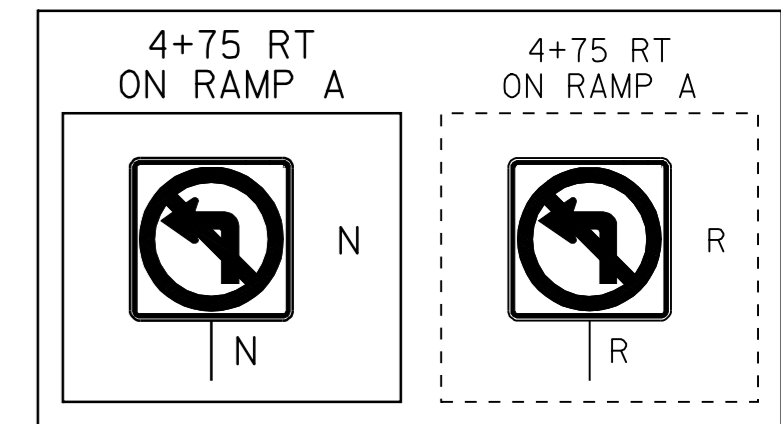
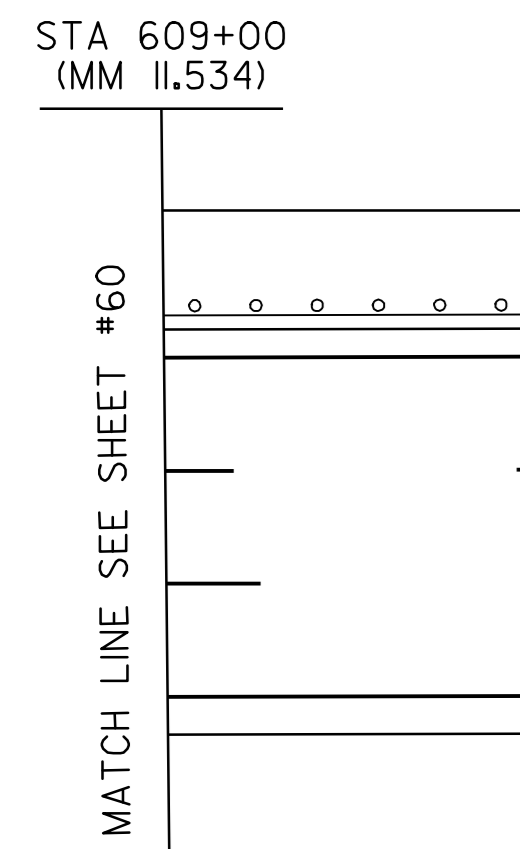
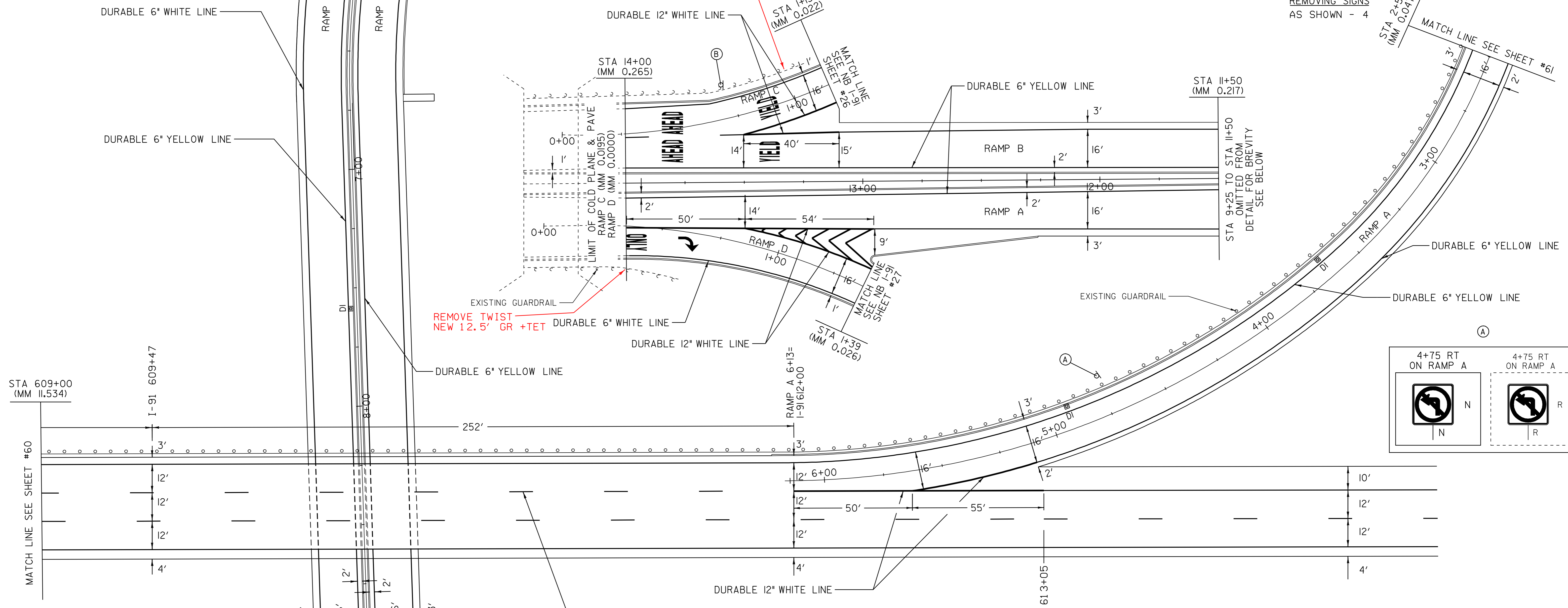
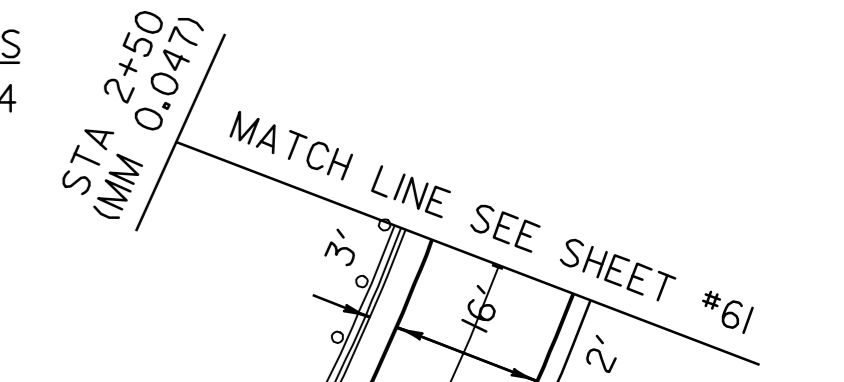
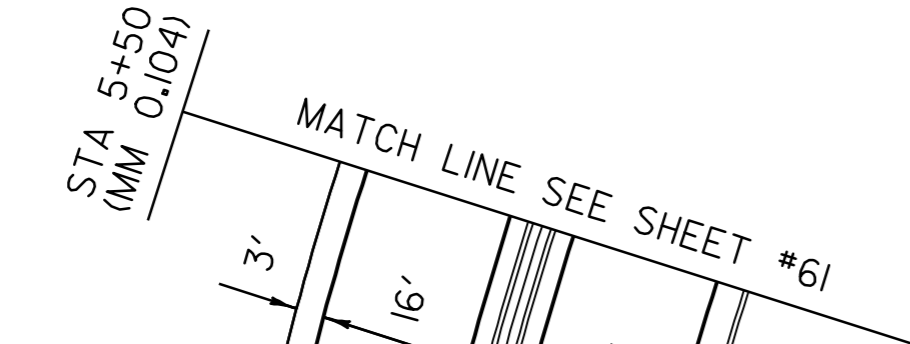
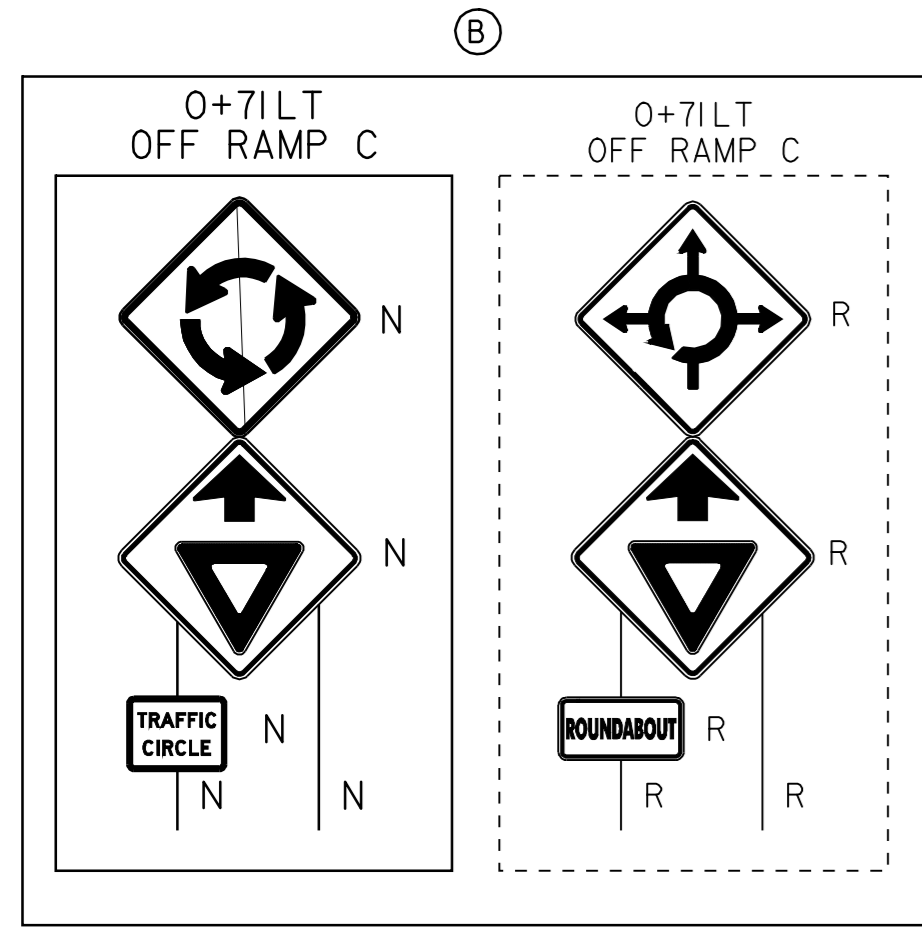
ON RAMP 5+93 LT (PAVE ONLY) (RAMP A)
ON RAMP 6+67 LT (PAVE ONLY) (RAMP A)

DELINEATORS

REFER TO STANDARDS E-197, E-198
AND E-199 FOR PLACEMENT GUIDELINES

REMOVING SIGNS

AS SHOWN - 4



DATUM
VERTICAL _____
HORIZONTAL _____

STA 9+25 (MM 0.175)
STA 9+25 TO STA 11+50
OMITTED FROM
DETAIL FOR BREVITY
SEE ABOVE

NOT TO SCALE

- LEGEND**
- R = REMOVE EXISTING
 - S = SALVAGE
 - R & S = REMOVE AND SALVAGE
 - N = NEW
 - RET = RETAIN
 - B-B = BACK TO BACK
 - = NEW RAIL
 - = EXISTING RAIL

RAMP DETAIL #13	PROJECT NAME: GUILFORD-BRATTLEBORO	PLOT DATE: 22-JAN-2009 13:4
	PROJECT NUMBER: AC IM 091-1(54)	FILE NAME: 05A014r.d3.1
	DESIGNED BY: CLD	PROJECT LEADER: CRB
	CLD REF. NO. 05-0387	DRAWN BY: MRS
	CHECKED BY: NLL	SHEET 59 OF 69