

EXIT 2 - RAMP D SOUTHBOUND OFF RAMP

SEE STANDARDS E-191, E-192 AND E-193
FOR PAVEMENT MARKING GUIDELINES

TEMPORARY AND DURABLE 6" WHITE LINE
OFF RAMP 1+52 TO 7+50 SOLID RT (RAMP D)
I-91 485+05 TO 487+55 DASHED LT
I-91 487+55 TO 493+00 DOTTED LT

TEMPORARY AND DURABLE 6" YELLOW LINE
OFF RAMP 1+52 TO 7+50 SOLID LT (RAMP D)

TEMPORARY AND DURABLE 12" WHITE LINE
OFF RAMP 0+57 TO 1+52 SOLID LT (RAMP D)
I-91 483+55 TO 485+05 SOLID LT
GORE STRIPES 483+55 TO 484+55 SOLID LT

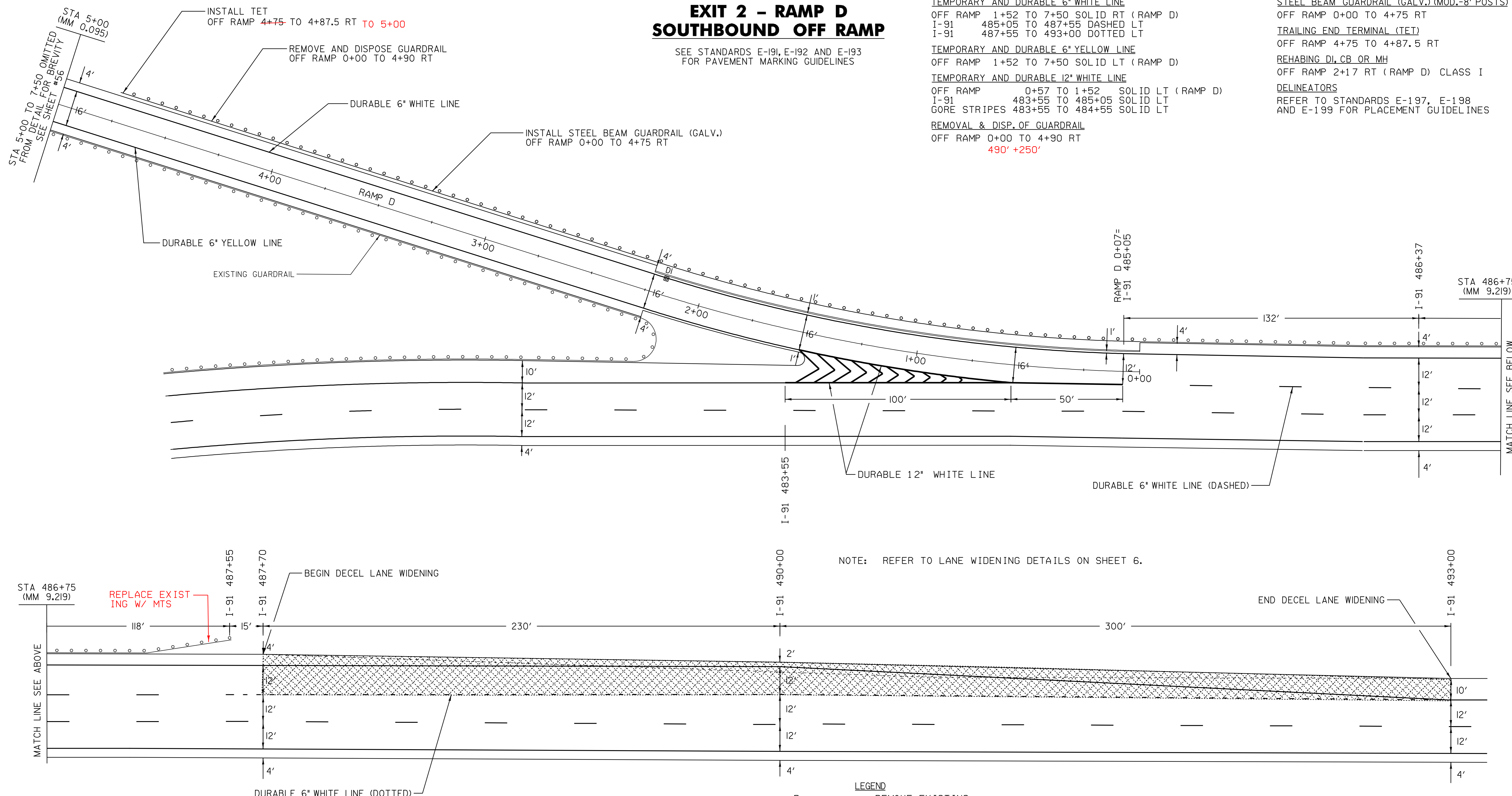
REMOVAL & DISP. OF GUARDRAIL
OFF RAMP 0+00 TO 4+90 RT
490' +250'

STEEL BEAM GUARDRAIL (GALV.) (MOD.-8' POSTS)
OFF RAMP 0+00 TO 4+75 RT

TRAILING END TERMINAL (TET)
OFF RAMP 4+75 TO 4+87.5 RT

REHABING DL, CB OR MH
OFF RAMP 2+17 RT (RAMP D) CLASS I

DELINEATORS
REFER TO STANDARDS E-197, E-198
AND E-199 FOR PLACEMENT GUIDELINES



NOTE: REFER TO LANE WIDENING DETAILS ON SHEET 6.

LEGEND

- R = REMOVE EXISTING
- S = SALVAGE
- R & S = REMOVE AND SALVAGE
- N = NEW
- RET = RETAIN
- B-B = BACK TO BACK
- = NEW RAIL
- — — = EXISTING RAIL
- ▨ = SHADED AREA EXCAVATE 6' / TYPE IS

**RAMP
DETAIL #12**

PROJECT NAME: GUILFORD-BRATTLEBORO
PROJECT NUMBER: AC IM 091-I(54)

FILE NAME: 05A014r.d12.1
PROJECT LEADER: CRB
DESIGNED BY: CLD
CLD REF. NO. 05-0387

PLOT DATE: 22-JAN-2009 13:4
DRAWN BY: MRS
CHECKED BY: NLL
SHEET 58 OF 69

DATUM
VERTICAL _____
HORIZONTAL _____

NOT TO SCALE