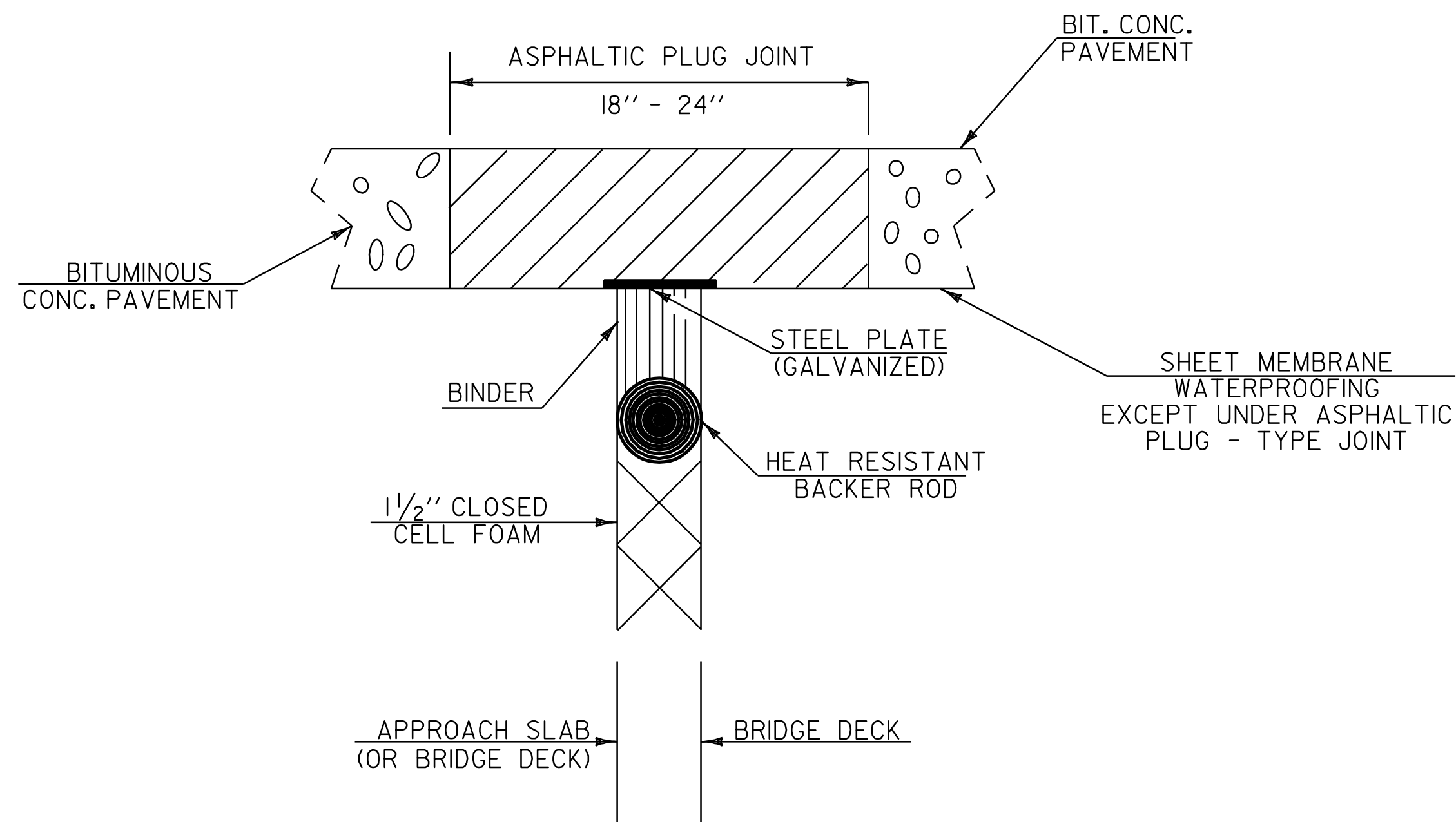


**ASPHALTIC PLUG - TYPE  
JOINT DETAIL  
REMOVAL OF UP TO  
2" DETERIORATED CONCRETE**

**NOTES:**

- UPON ENCOUNTERING UP TO 2" AVERAGE OF DETERIORATED CONCRETE, THE CONTRACTOR SHALL REMOVE THE DETERIORATED MATERIAL AND REPLACE IT WITH THE ASPHALTIC PLUG JOINT MATERIAL AS DIRECTED BY THE RESIDENT ENGINEER.
- REMOVAL OF THE DETERIORATED CONCRETE WILL NOT BE PAID SEPARATELY BUT WILL BE CONSIDERED INCIDENTAL TO THE UNIT BID PRICE FOR THE ITEM 516.10. THE ADDITIONAL PLUG JOINT MATERIAL BELOW THE DESIGN DEPTH TO REPLACE THE DETERIORATED CONCRETE WILL BE CONSIDERED INCIDENTAL TO THE UNIT BID PRICE FOR THE ITEM 516.10.
- THE STEEL PLATE IN THE ASPHALTIC PLUG JOINT MAY BE OMITTED ONLY IF THE REPAIRED SURFACE IS SO IRREGULAR IT WILL CAUSE VERTICAL MOVEMENT AND IT IS DIRECTED BY THE RESIDENT ENGINEER.

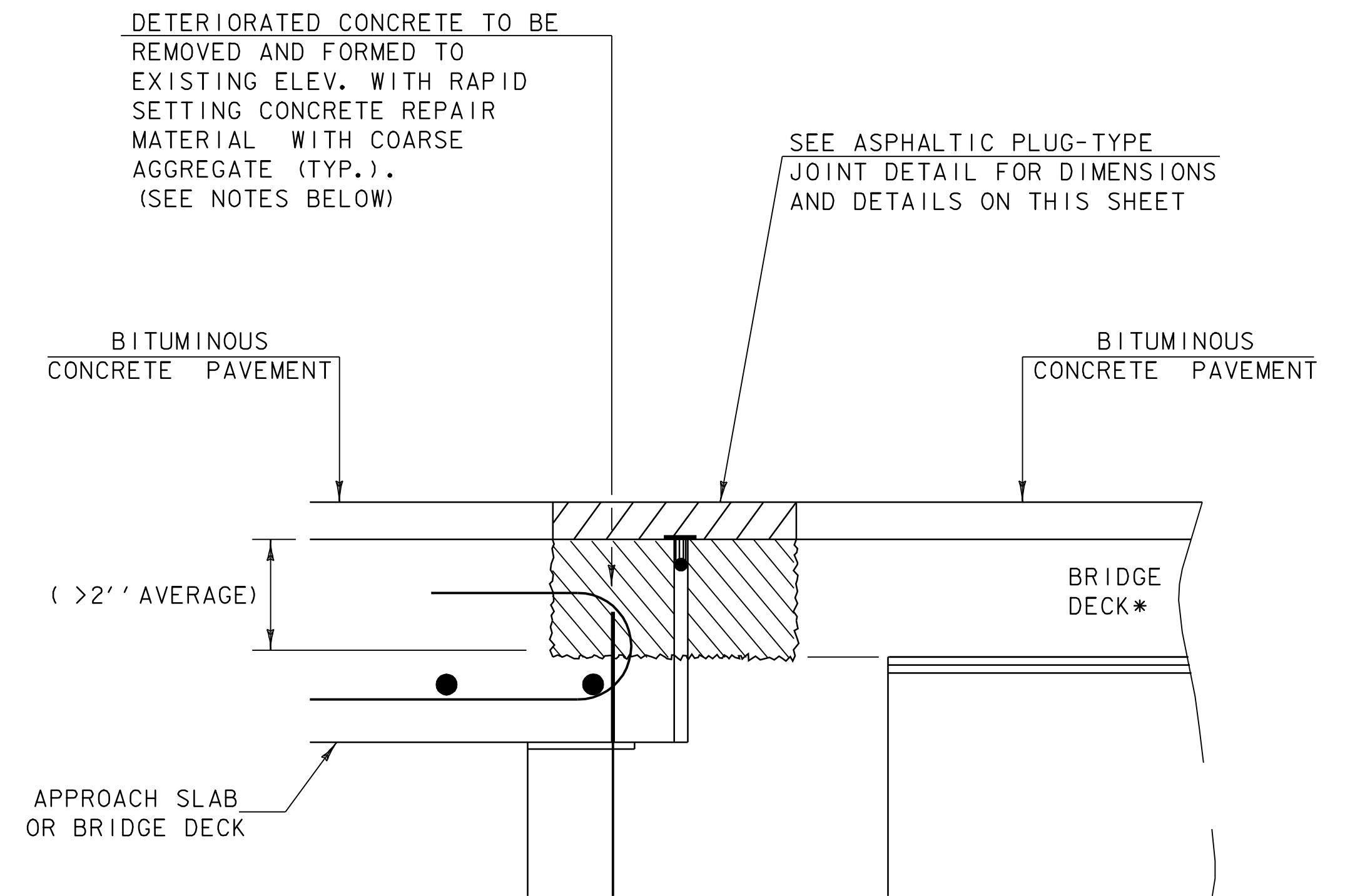
\* REFER TO SPECIAL PROVISIONS FOR BASIS OF PAYMENT



**ASPHALTIC PLUG - TYPE  
JOINT DETAIL**

**ASPHALTIC PLUG - TYPE JOINTS**

LOCATION		
BRIDGE: 2S	275+96,	44 FT
2S	277+07,	44 FT
3S	315+72,	30 FT
3S	318+29,	30 FT
4S	393+45,	44 FT
4S	395+61,	44 FT
5S	431+74,	42 FT
5S	432+23,	42 FT
5S	432+72,	42 FT
5S	433+22,	42 FT
6S	450+61,	30 FT
6S	451+59,	30 FT
6S	452+57,	30 FT
6S	453+56,	30 FT
6S	454+54,	30 FT
6S	455+52,	30 FT
8S	544+44,	42 FT
8S	544+93,	42 FT
8S	545+41,	42 FT
8S	545+90,	42 FT
9S	552+75,	30 FT
9S	562+32,	30 FT
11S	609+39,	42 FT
11S	609+67,	42 FT
11S	609+95,	42 FT
11S	610+23,	42 FT



**ASPHALTIC PLUG - TYPE  
JOINT DETAIL  
REMOVAL OF >2"  
DETERIORATED CONCRETE**

**NOTES:**

- UPON ENCOUNTERING GREATER THAN 2" AVERAGE OF DETERIORATED CONCRETE, THE CONTRACTOR SHALL REMOVE THE DETERIORATED MATERIAL AND REPLACE IT WITH RAPID SETTING CONCRETE REPAIR MATERIAL WITH COARSE AGGREGATE.
- REMOVAL OF THE DETERIORATED CONCRETE WILL BE INCLUDED IN THE UNIT BID PRICE FOR ITEM 580.20 "RAPID SETTING CONCRETE REPAIR MATERIAL WITH COARSE AGGREGATE".
- THE STEEL PLATE IN THE ASPHALTIC PLUG JOINT MAY BE OMITTED ONLY IF THE REPAIRED SURFACE IS SO IRREGULAR IT WILL CAUSE VERTICAL MOVEMENT AND IT IS DIRECTED BY THE RESIDENT ENGINEER.

\*BRIDGE DECK REINFORCEMENT NOT SHOWN FOR CLARITY

DATUM	_____
VERTICAL	_____
HORIZONTAL	_____

NOT TO SCALE

<b>PROJECT TYPICAL SHEET 4</b>	PROJECT NAME: GUILFORD-BRATTLEBORO	PLOT DATE: 22-JAN-2009 13:4
	PROJECT NUMBER: AC IM 091-1(54)	DRAWN BY: MRS
	FILE NAME: 05A014+y04.1	CHECKED BY: NLL
	PROJECT LEADER: CRB	SHEET 39 OF 69
	DESIGNED BY: CLD	
	CLD REF. NO. 05-0387	