

TEMPORARY AND DURABLE 6" WHITE LINE
 ON RAMP D 1+39 TO 6+35 SOLID RT
 I-91 617+35 TO 623+35 DASHED RT

TEMPORARY AND DURABLE 6" YELLOW LINE
 ON RAMP D 1+39 TO 6+35 SOLID LT

TEMPORARY AND DURABLE 12" WHITE LINE
 ON RAMP D 6+35 TO 8+34 SOLID LT
 I-91 614+85 TO 617+35 SOLID RT

BITUMINOUS CONCRETE GUTTERS AND TRAFFIC ISLANDS
 ON RAMP D 1+78 RT (PAVE ONLY)
 ON RAMP D 2+73 RT (PAVE ONLY)
 I-91 619+33 RT (PAVE ONLY)

DELINEATORS
 REFER TO STANDARDS E-197, E-198,
 AND E-199 FOR PLACEMENT GUIDELINES

REMOVING SIGNS
 AS SHOWN - 2

EXIT 3 - RAMP D NORTHBOUND ON RAMP

SEE STANDARDS E-191, E-192 AND E-193
 FOR PAVEMENT MARKING GUIDELINES

REMOVING AND RESETTING CURB
 I-91 615+61 TO 618+35 RT NOT DONE
 (NO EXISTING REVEAL) 3' - 4" REVEAL

REMOVAL AND DISP. OF GUARDRAIL
 I-91 622+35 TO 627+38 RT

STEEL BEAM GUARDRAIL (GALV.) (MOD.-8' POSTS)
 I-91 622+35 TO 627+25.5 RT

TRAILING END TERMINAL (TET)
 I-91 627+25.5 TO 627+38 RT

TRAILING END TERMINAL (TET)
 I-91 627+25.5 TO 627+38 RT

TRAILING END TERMINAL (TET)
 I-91 627+25.5 TO 627+38 RT

TRAILING END TERMINAL (TET)
 I-91 627+25.5 TO 627+38 RT

TRAILING END TERMINAL (TET)
 I-91 627+25.5 TO 627+38 RT

TRAILING END TERMINAL (TET)
 I-91 627+25.5 TO 627+38 RT

TRAILING END TERMINAL (TET)
 I-91 627+25.5 TO 627+38 RT

TRAILING END TERMINAL (TET)
 I-91 627+25.5 TO 627+38 RT

TRAILING END TERMINAL (TET)
 I-91 627+25.5 TO 627+38 RT

TRAILING END TERMINAL (TET)
 I-91 627+25.5 TO 627+38 RT

TRAILING END TERMINAL (TET)
 I-91 627+25.5 TO 627+38 RT

TRAILING END TERMINAL (TET)
 I-91 627+25.5 TO 627+38 RT

TRAILING END TERMINAL (TET)
 I-91 627+25.5 TO 627+38 RT

TRAILING END TERMINAL (TET)
 I-91 627+25.5 TO 627+38 RT

TRAILING END TERMINAL (TET)
 I-91 627+25.5 TO 627+38 RT

TRAILING END TERMINAL (TET)
 I-91 627+25.5 TO 627+38 RT

TRAILING END TERMINAL (TET)
 I-91 627+25.5 TO 627+38 RT

TRAILING END TERMINAL (TET)
 I-91 627+25.5 TO 627+38 RT

TRAILING END TERMINAL (TET)
 I-91 627+25.5 TO 627+38 RT

TRAILING END TERMINAL (TET)
 I-91 627+25.5 TO 627+38 RT

TRAILING END TERMINAL (TET)
 I-91 627+25.5 TO 627+38 RT

TRAILING END TERMINAL (TET)
 I-91 627+25.5 TO 627+38 RT

TRAILING END TERMINAL (TET)
 I-91 627+25.5 TO 627+38 RT

TRAILING END TERMINAL (TET)
 I-91 627+25.5 TO 627+38 RT

TRAILING END TERMINAL (TET)
 I-91 627+25.5 TO 627+38 RT

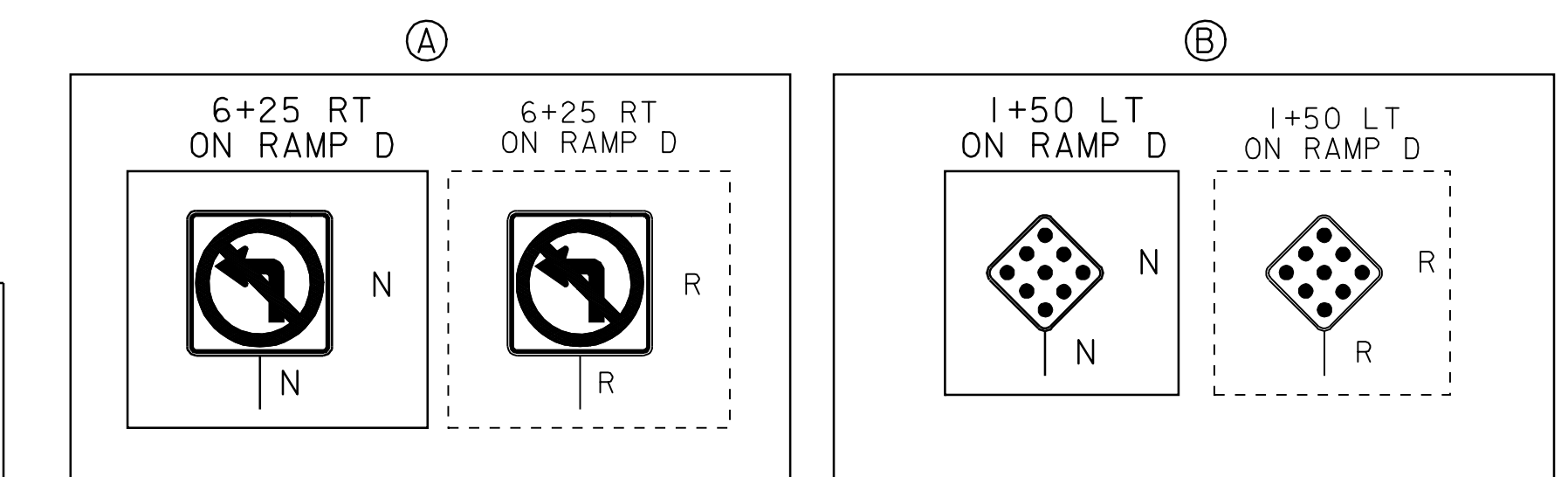
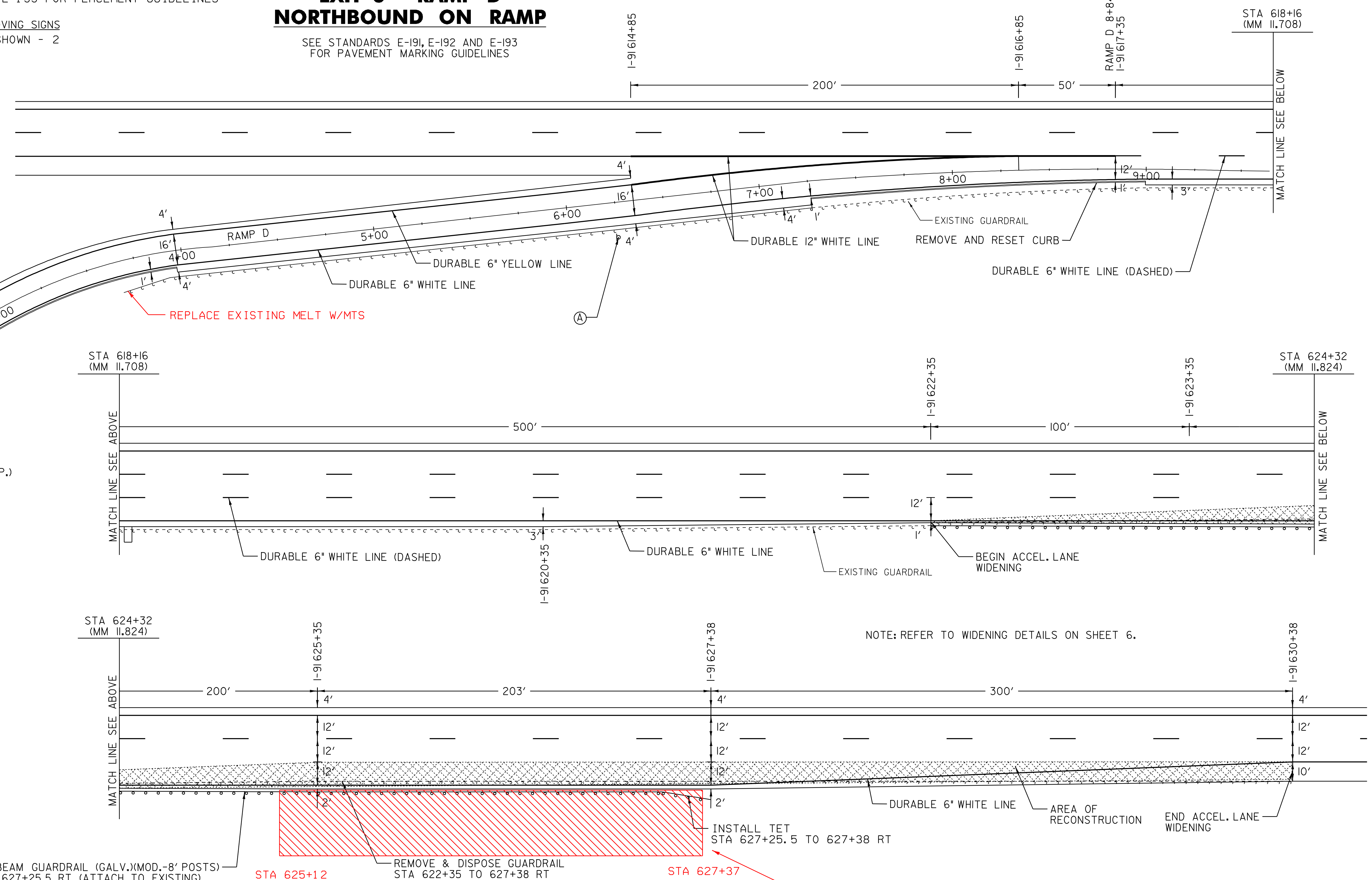
TRAILING END TERMINAL (TET)
 I-91 627+25.5 TO 627+38 RT

TRAILING END TERMINAL (TET)
 I-91 627+25.5 TO 627+38 RT

TRAILING END TERMINAL (TET)
 I-91 627+25.5 TO 627+38 RT

TRAILING END TERMINAL (TET)
 I-91 627+25.5 TO 627+38 RT

TRAILING END TERMINAL (TET)
 I-91 627+25.5 TO 627+38 RT



- LEGEND**
- R = REMOVE EXISTING
 - S = SALVAGE
 - R & S = REMOVE AND SALVAGE
 - N = NEW
 - RET = RETAIN
 - B-B = BACK TO BACK
 - = NEW RAIL
 - = EXISTING RAIL
 - ▨ = SHADED AREA EXCAVATE 6' / TYPE IS

NB I-91 C.O. #3 ITEM 900.508 STONE FILL TYPE III MOD.
 REFERENCE COMPUTATION BINDER PAGE 900.508-1 FOR ASBUILT
 INFO. AND CALCULATIONS.
 TOTAL 276.85 CY.

RAMP DETAIL #7

PROJECT NAME: GUILFORD-BRATTLEBORO
 PROJECT NUMBER: AC IM 091-I(51)

FILE NAME: 03A020rmp7.1
 PROJECT LEADER: CRB
 DESIGNED BY: CLD
 CLD REF. NO. 04-0398

PLOT DATE: 22-JAN-2009 13:3
 DRAWN BY: JCS
 CHECKED BY: NLL
 SHEET 27 OF 69

NOT TO SCALE