

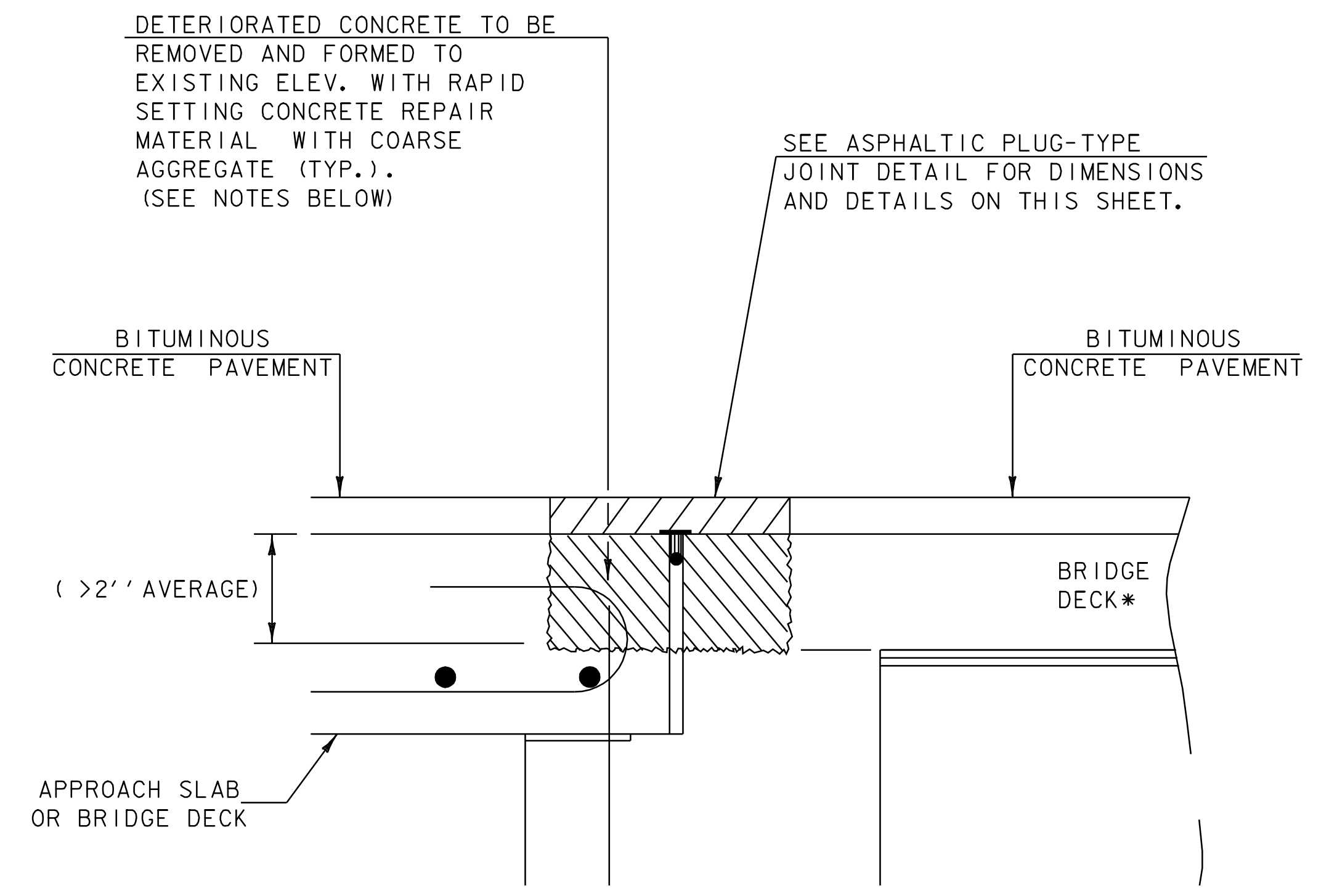
**ASPHALTIC PLUG - TYPE
JOINT DETAIL
REMOVAL OF UP TO
2" DETERIORATED CONCRETE**

NOTES:

- UPON ENCOUNTERING UP TO 2" AVERAGE OF DETERIORATED CONCRETE, THE CONTRACTOR SHALL REMOVE THE DETERIORATED MATERIAL AND REPLACE IT WITH THE ASPHALTIC PLUG JOINT MATERIAL AS DIRECTED BY THE RESIDENT ENGINEER.
- REMOVAL OF THE DETERIORATED CONCRETE WILL NOT BE PAID SEPARATELY BUT WILL BE CONSIDERED INCIDENTAL TO THE UNIT BID PRICE FOR THE ITEM 516.10. THE ADDITIONAL PLUG JOINT MATERIAL BELOW THE DESIGN DEPTH TO REPLACE THE DETERIORATED CONCRETE WILL BE CONSIDERED INCIDENTAL TO THE UNIT BID PRICE FOR THE ITEM 516.10.
- THE STEEL PLATE IN THE ASPHALTIC PLUG JOINT MAY BE OMITTED ONLY IF THE REPAIRED SURFACE IS SO IRREGULAR IT WILL CAUSE VERTICAL MOVEMENT AND IT IS DIRECTED BY THE RESIDENT ENGINEER.
- REFER TO SPECIAL PROVISIONS FOR BASIS OF PAYMENT.

ASPHALTIC PLUG - TYPE JOINTS

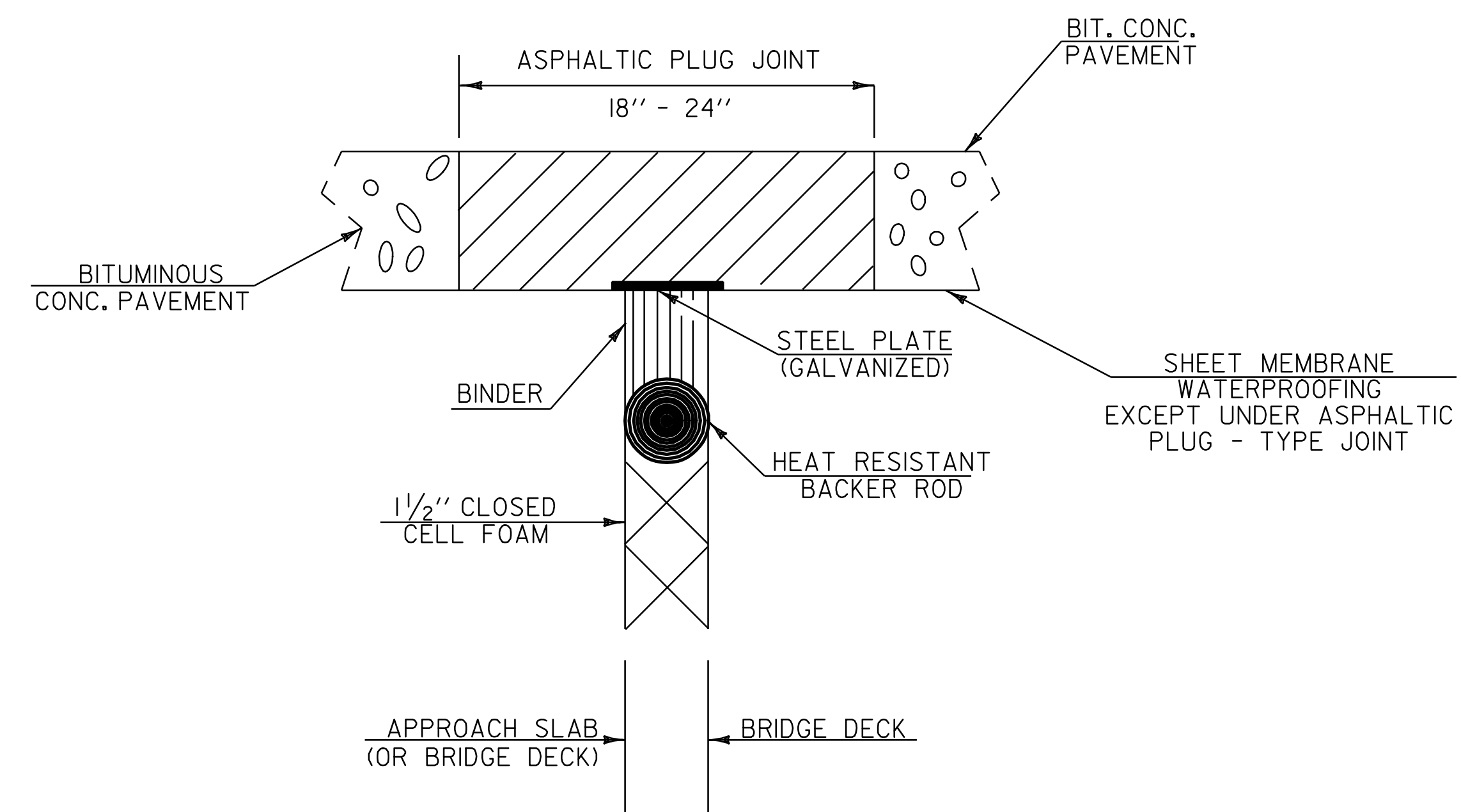
LOCATION	
BRIDGE: 2N	275+79, 44 FT
2N	276+79, 44 FT
4N	393+99, 44 FT
4N	395+97, 44 FT
5N	431+51, 42 FT
5N	432+00, 42 FT
5N	432+50, 42 FT
5N	432+93, 42 FT
6N	451+45, 30 FT
6N	452+23, 30 FT
6N	453+07, 30 FT
6N	453+92, 30 FT
6N	454+75, 30 FT
6N	455+60, 30 FT
8N	544+67, 42 FT
8N	545+16, 42 FT
8N	545+65, 42 FT
8N	546+04, 42 FT
9N	552+78, 30 FT
9N	562+56, 30 FT
11N	609+28, 42 FT
11N	609+67, 42 FT
11N	610+31, 42 FT
11N	610+70, 42 FT



**ASPHALTIC PLUG - TYPE
JOINT DETAIL
REMOVAL OF >2"
DETERIORATED CONCRETE**

NOTES:

- UPON ENCOUNTERING GREATER THAN 2" AVERAGE OF DETERIORATED CONCRETE, THE CONTRACTOR SHALL REMOVE THE DETERIORATED MATERIAL AND REPLACE IT WITH RAPID SETTING CONCRETE REPAIR MATERIAL WITH COARSE AGGREGATE.
- REMOVAL OF THE DETERIORATED CONCRETE WILL BE INCLUDED IN THE UNIT BID PRICE FOR ITEM 580.20 "RAPID SETTING CONCRETE REPAIR MATERIAL WITH COARSE AGGREGATE".
- THE STEEL PLATE IN THE ASPHALTIC PLUG JOINT MAY BE OMITTED ONLY IF THE REPAIRED SURFACE IS SO IRREGULAR IT WILL CAUSE VERTICAL MOVEMENT AND IT IS DIRECTED BY THE RESIDENT ENGINEER.



**ASPHALTIC PLUG - TYPE
JOINT DETAIL**

DATUM	_____
VERTICAL	_____
HORIZONTAL	_____

NOT TO SCALE

PROJECT TYPICAL SHEET 4	PROJECT NAME: GUILFORD-BRATTLEBORO	FILE NAME: 03A020+yp4.1	PLOT DATE: 22-JAN-2009 13:3
	PROJECT NUMBER: AC IM 091-1(51)	PROJECT LEADER: CRB	DRAWN BY: JCS
	DESIGNED BY: CLD	CHECKED BY: NLL	
	CLD REF. NO. 04-0398		SHEET 13 OF 69