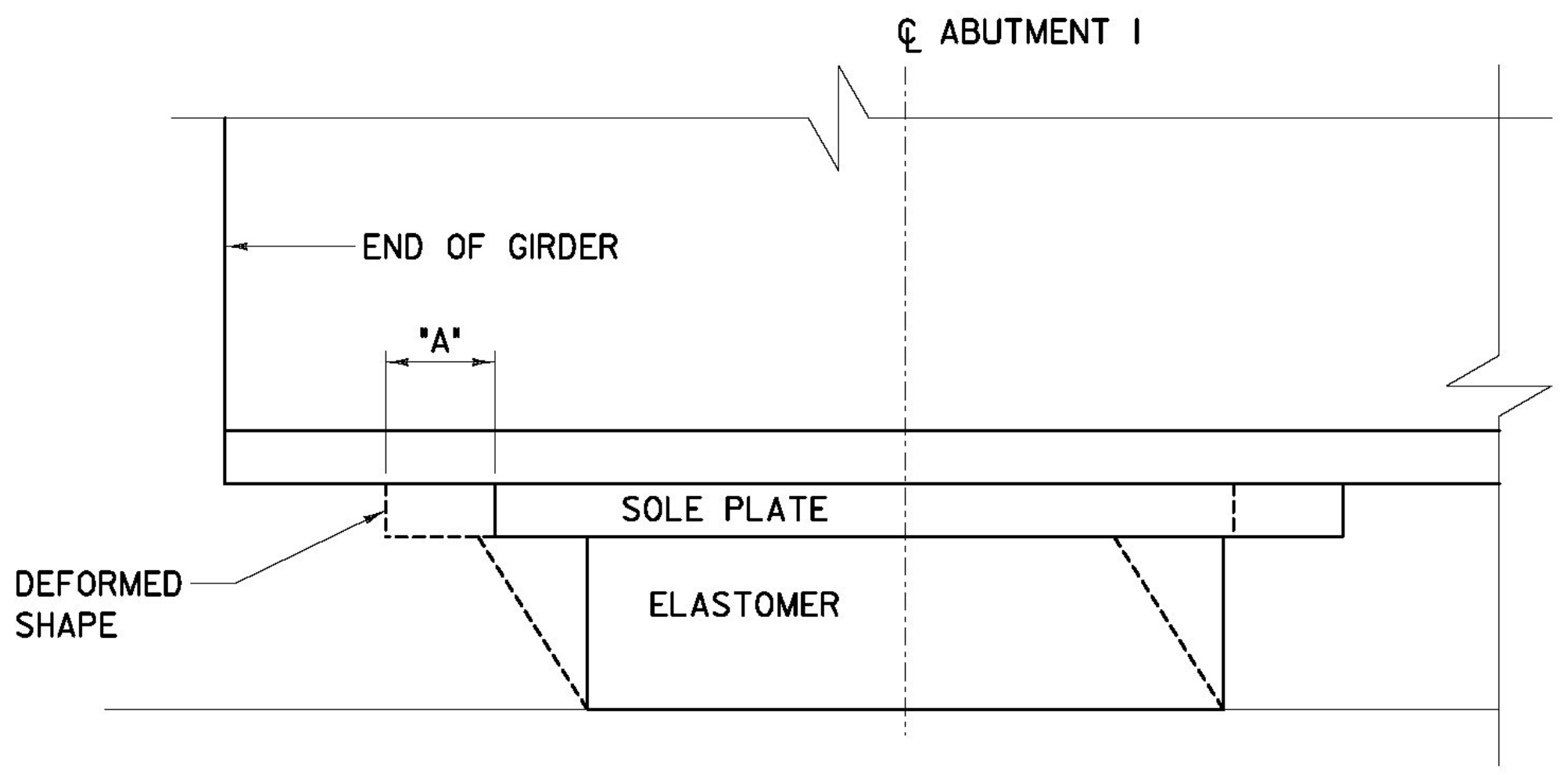


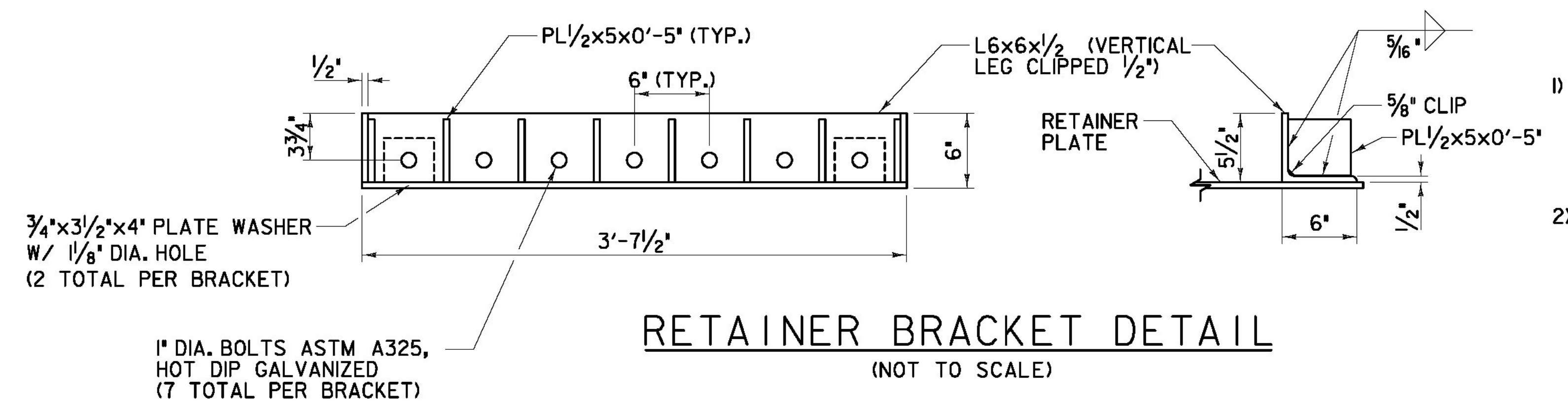
**ANCHOR ROD DETAIL**  
(NOT TO SCALE)



SOUTH ABUTMENT BEARING SHOWN  
(NORTH ABUTMENT SIMILAR BUT OPPOSITE HAND)

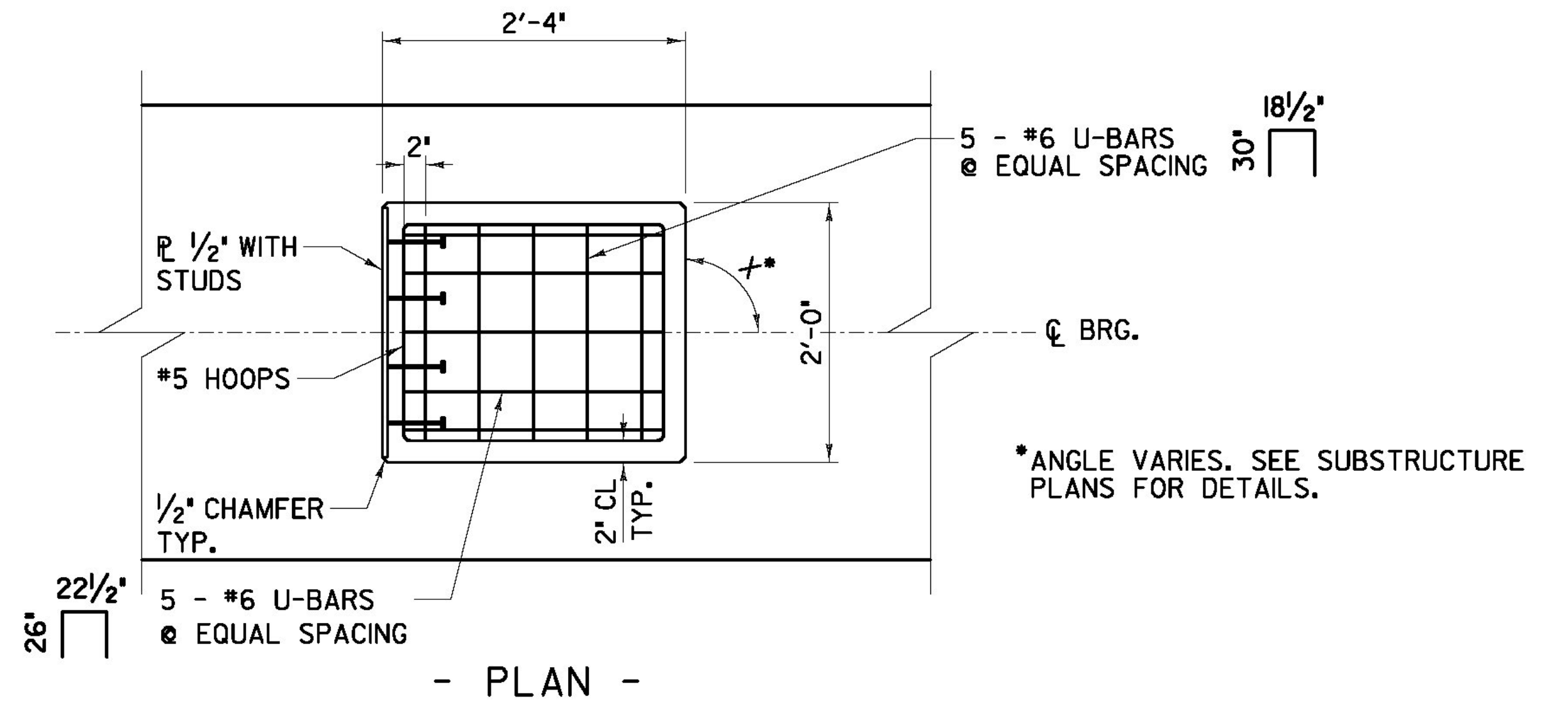
TEMP	DIMENSION "A"		
	S. ABUTMENT	PIER *	N. ABUTMENT
35	0	0	0
45	0	0	0
55	0	0	0
65	3/8"	1/8"	1/4"
75	9/16"	3/16"	3/8"
85	3/4"	5/16"	7/16"
95	15/16"	3/8"	9/16"

\* "A" DIMENSION FOR PIER MEASURED TO THE SOUTH

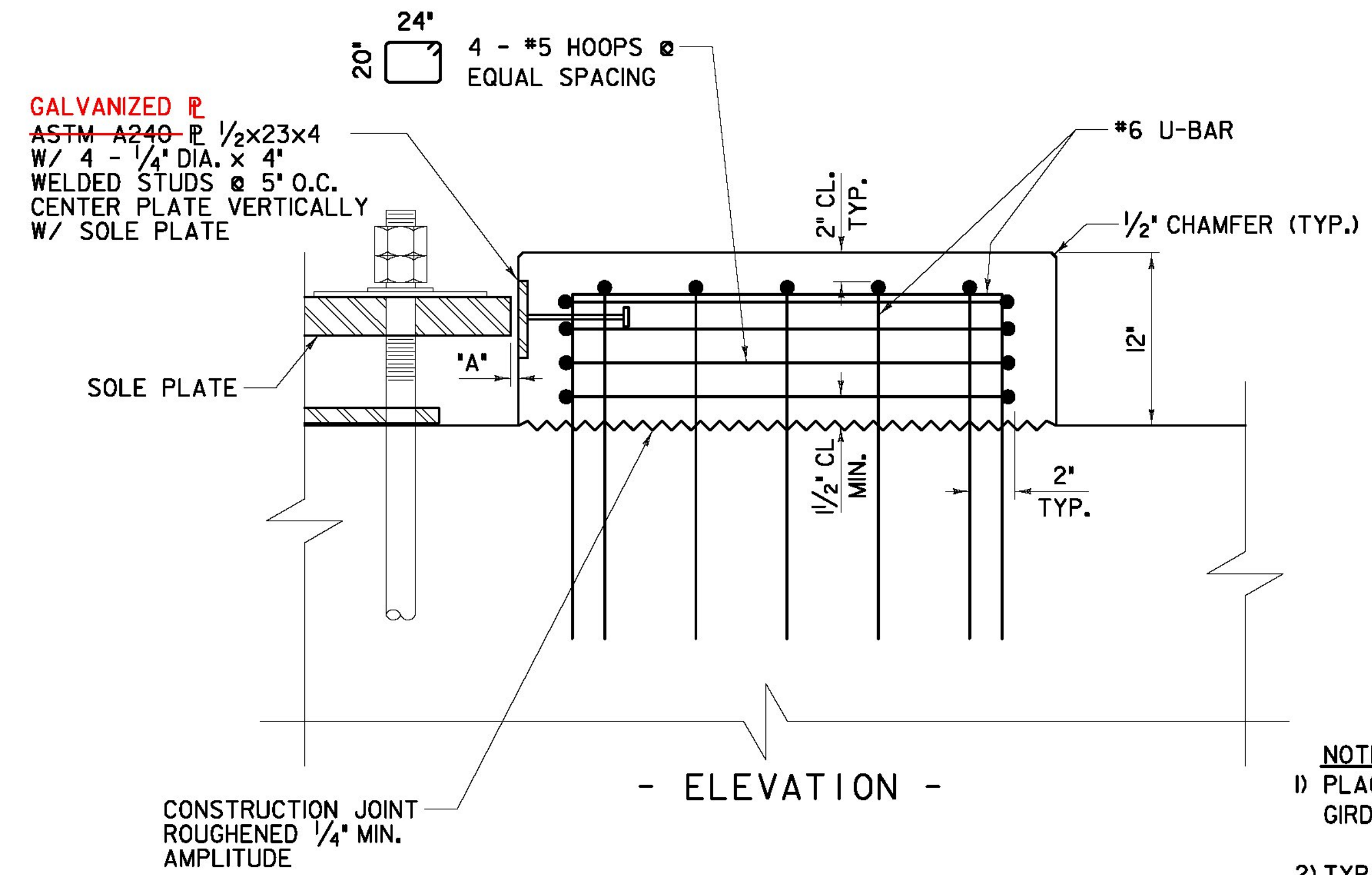


**RETAINER BRACKET DETAIL**  
(NOT TO SCALE)

- NOTE:**
- RETAINER BRACKET SHALL BE AASHTO M270 GR36, AND HOT DIPPED GALVANIZED PER AASHTO M III.
  - TYPICAL EACH BEARING ABUTMENT 2



- PLAN -



- ELEVATION -

**SHEAR LUG DETAIL**  
(NOT TO SCALE)

	DIM "A"
ABUTMENT 1	1/2"
PIER	1"
ABUTMENT 2	1/2"

- NOTE:**
- PLACE SHEAR LUG CONCRETE AFTER GIRDER INSTALLATION.
  - TYP. SHEAR LUG. EACH SIDE OF BEARING.

AS BUILT  
RECORD PLANS

**BECK & BELLUCCI, INC.** **TYLININTERNATIONAL**

PROJECT NAME: BRATTLEBORO  
PROJECT NUMBER: IM 091-(150)  
FILE NAME: ZB-100-BR6-411A.dgn  
PROJECT LEADER: Phillip E. Kendall P.E.  
DESIGNED BY: Evan Sinn  
BEARING DETAILS 2 OF 2  
PLOT DATE: 5/15/2013  
DRAWN BY: S. A. Morgan  
CHECKED BY: J. E. Krajewski  
SHEET ZB-100-BR6-411A