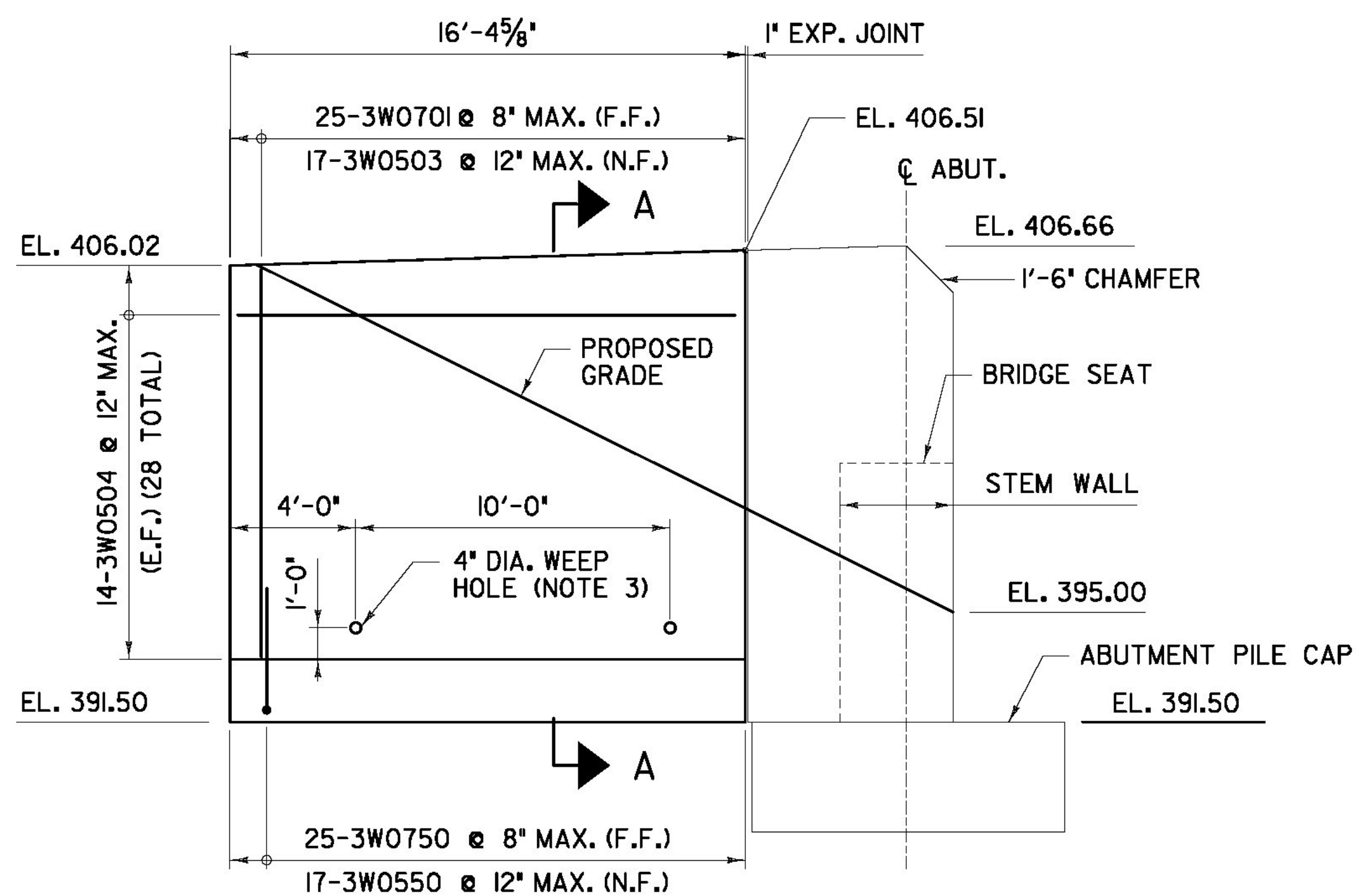
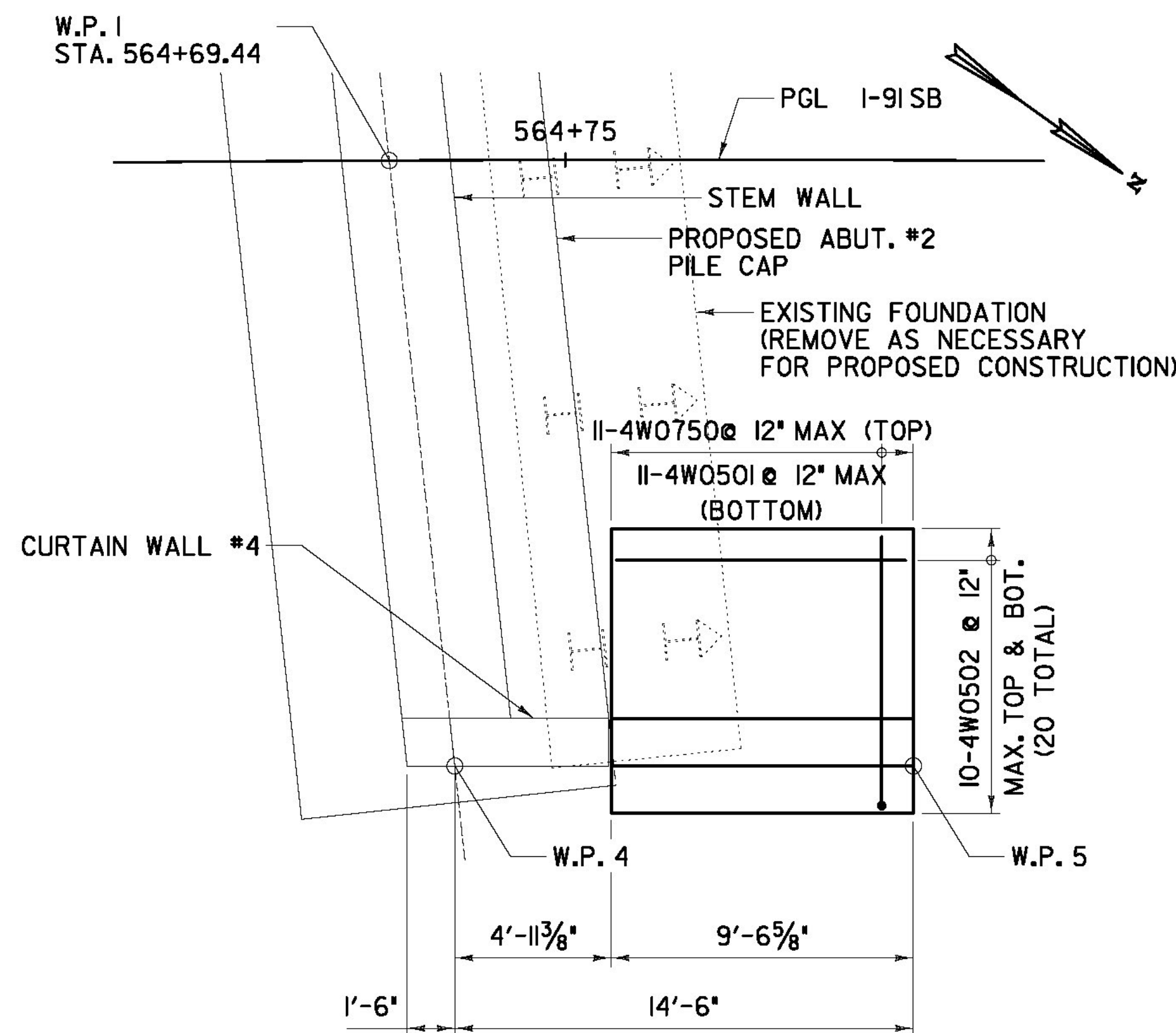


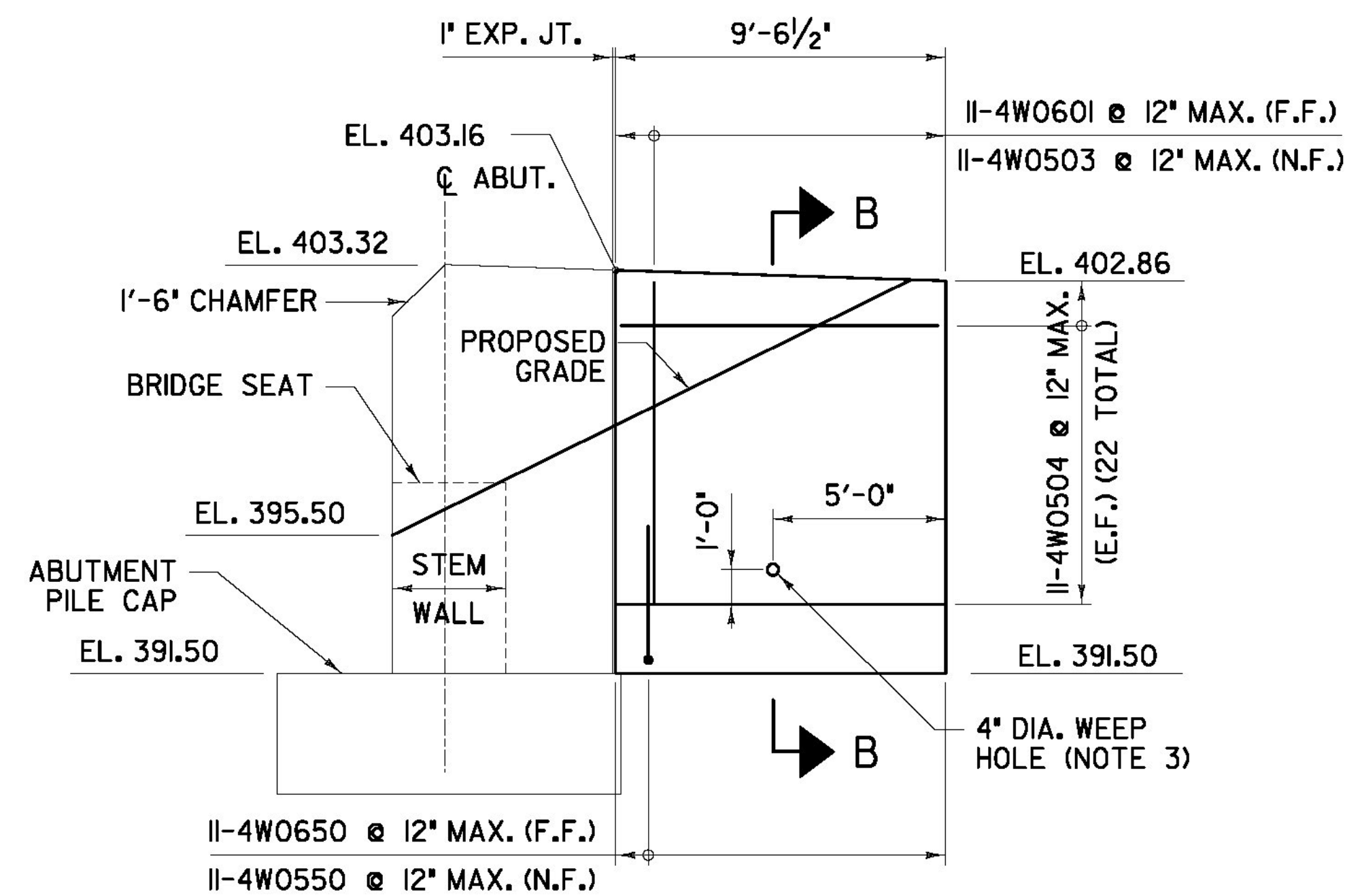
BR6S - ABUTMENT #2 - PLAN OF WW#3
SCALE: 1/4" = 1' - 0"



BR6S - ABUTMENT #2 - ELEVATION OF WW#3
SCALE: 1/4" = 1' - 0"



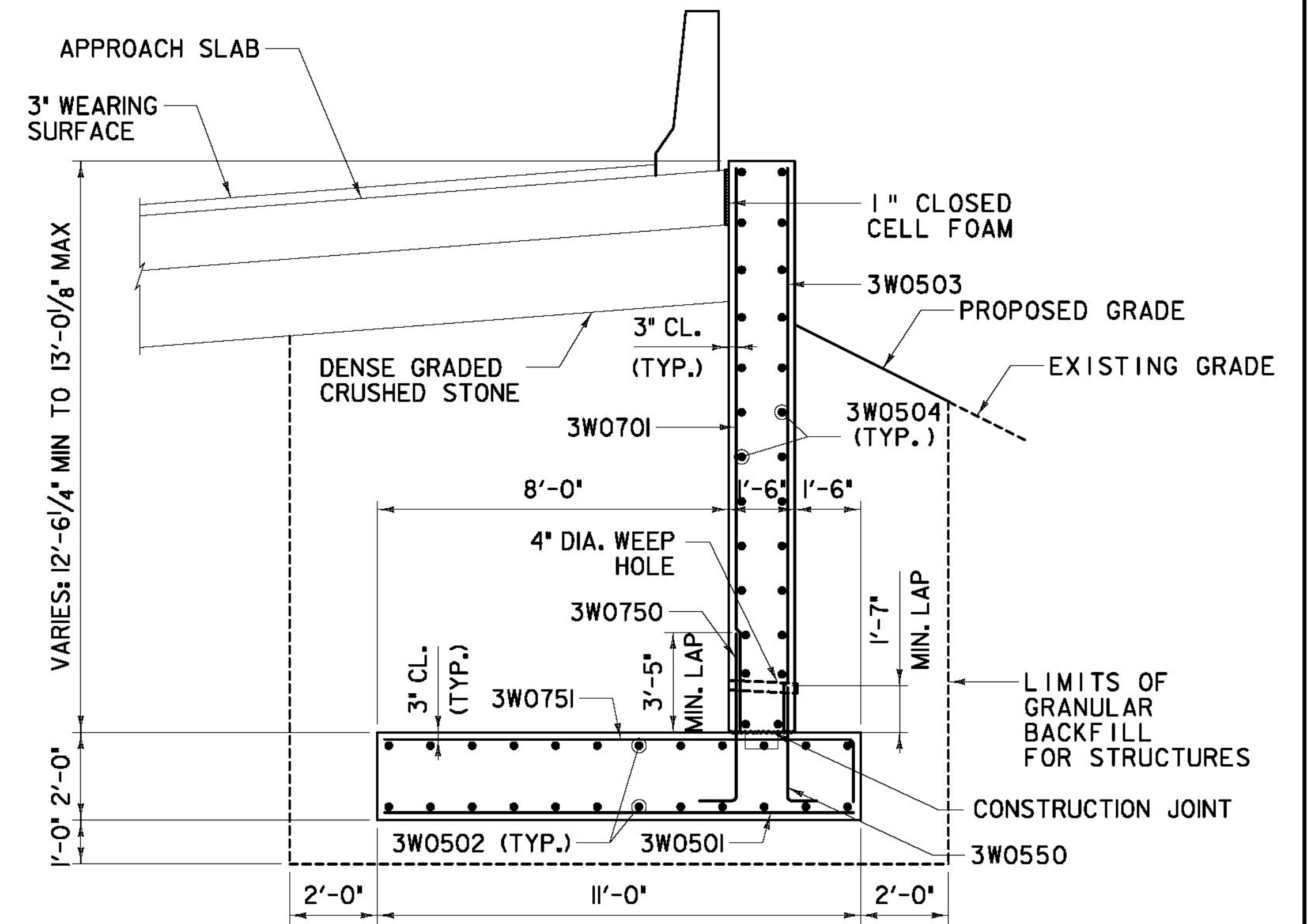
BR6S - ABUTMENT #2 - PLAN OF WW#4
SCALE: 1/4" = 1' - 0"



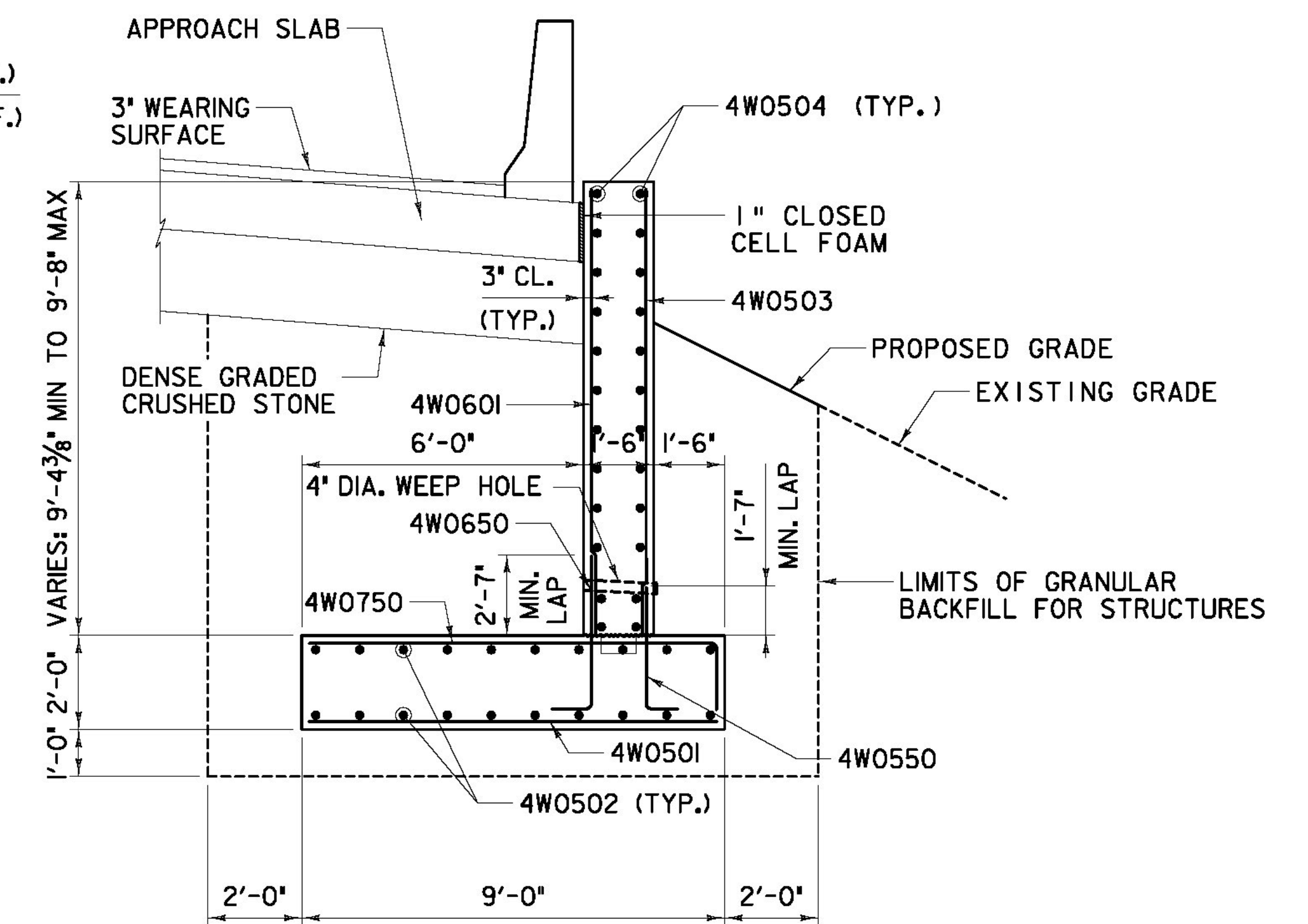
BR6S - ABUTMENT #2 - ELEVATION OF WW#4
SCALE: 1/4" = 1' - 0"

NOTES:

1. SEE SHEET 'ZB-100-BR6-352' FOR WORK POINT COORDINATES.
2. CONTRACTION JOINT SHALL BE FORMED USING A 3/4" V-NOTCH OR 3/4" DEEP SAW CUT ON THE EXPOSED WALL FACE ONLY.
3. WEEP HOLES SHALL SLOPE AT 2% DOWNWARD AWAY FROM PGL I-91SB AND EXTEND 1/2" BEYOND THE NEAR FACE OF THE SUBSTRUCTURE. COVER BOTH ENDS OF WEEP HOLE WITH GEOTEXTILE FABRIC.



SECTION A-A
SCALE: 3/8" = 1' - 0"



SECTION B-B
SCALE: 3/8" = 1' - 0"

**AS BUILT
RECORD PLANS**

RFC PLANS - WORK PACKAGE #8
BRIDGE 6S SUBSTRUCTURE
JANUARY 17, 2012

BECK & BELLUCCI, INC. TYLIN INTERNATIONAL

PROJECT NAME: BRATTLEBORO

PROJECT NUMBER: IM 091-(K50)

FILE NAME: ZB-100-BR6-359.dgn

PROJECT LEADER: Phillip E. Kendall P.E.

DESIGNED BY: Josh Olund P.E.

BR6S WINGWALL 3 & 4 PLAN & ELEVATION

PLOT DATE: 1/17/2012

DRAWN BY: S. Morgan

CHECKED BY: D. Myers

SHEET ZB-100-BR6-359