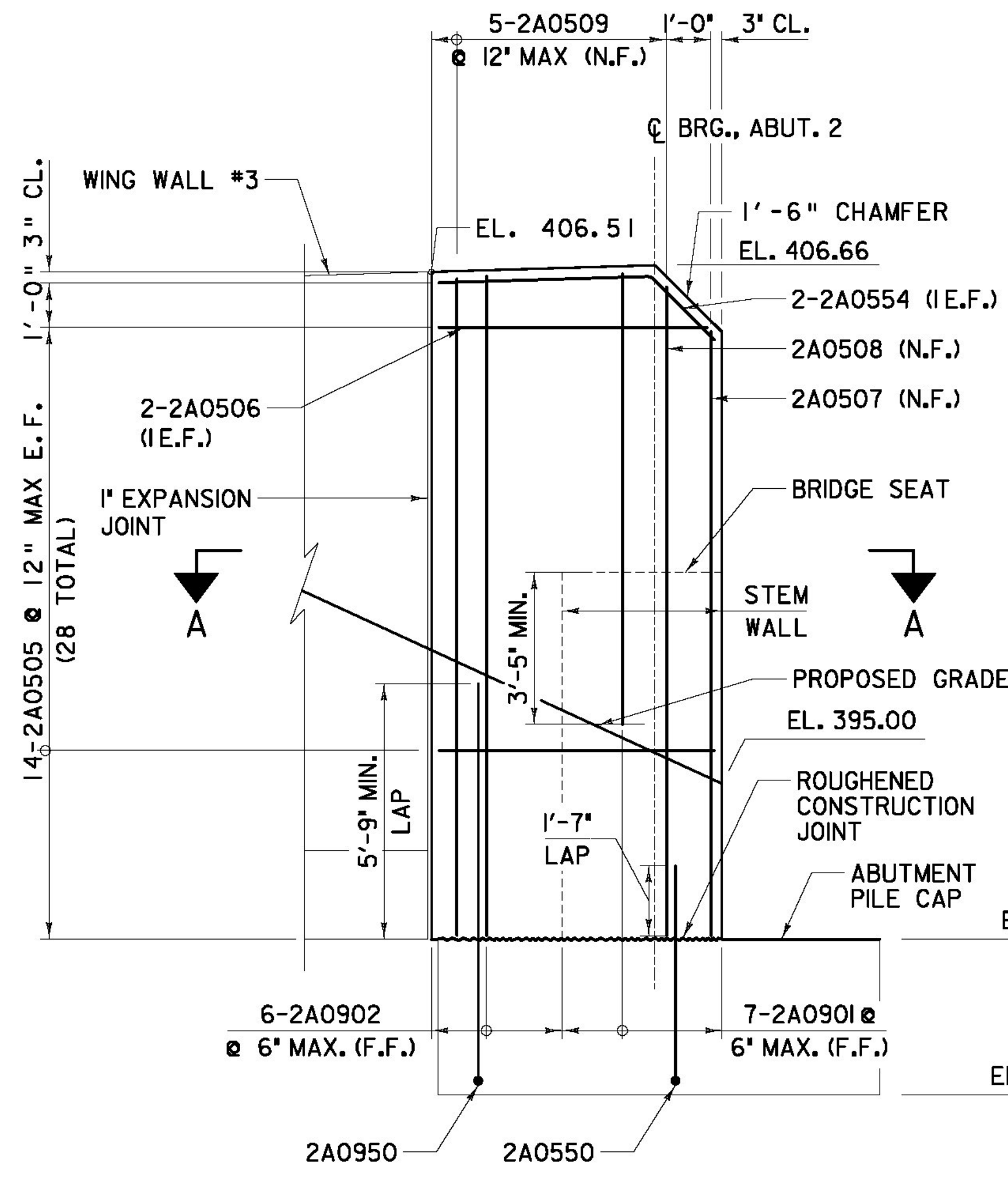
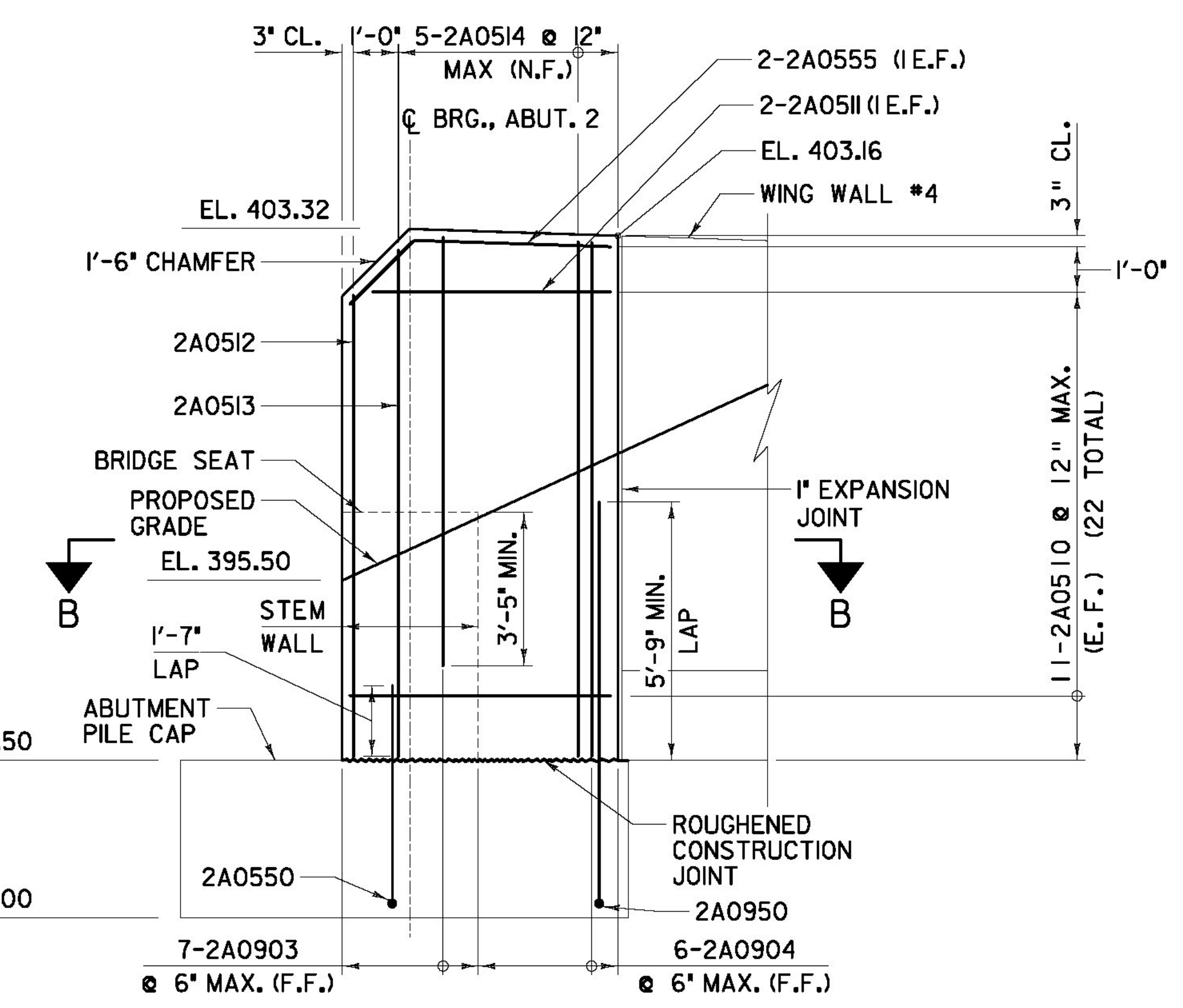


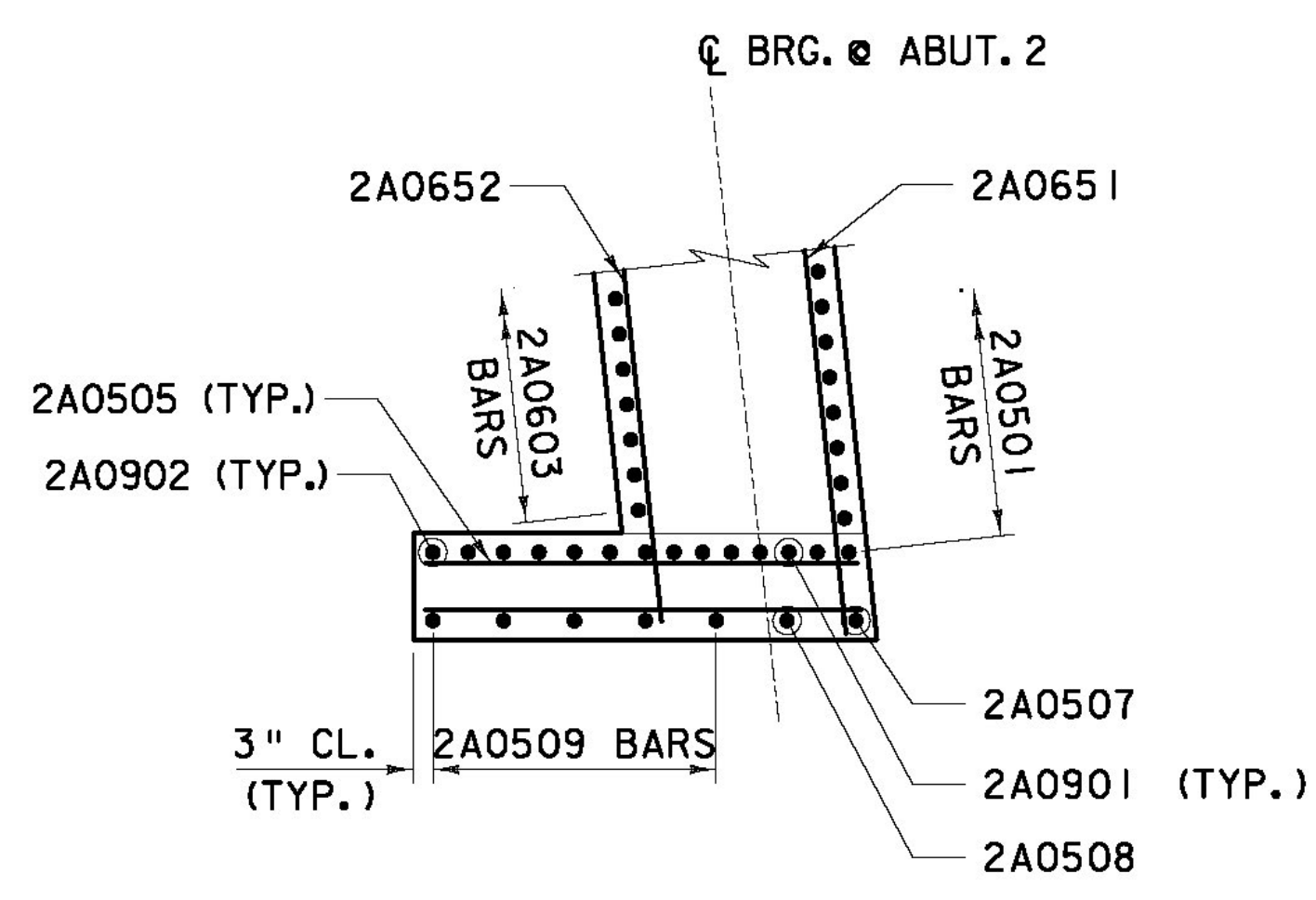
TYPICAL SECTION THRU ABUTMENT
SCALE: 1/2" = 1'-0"



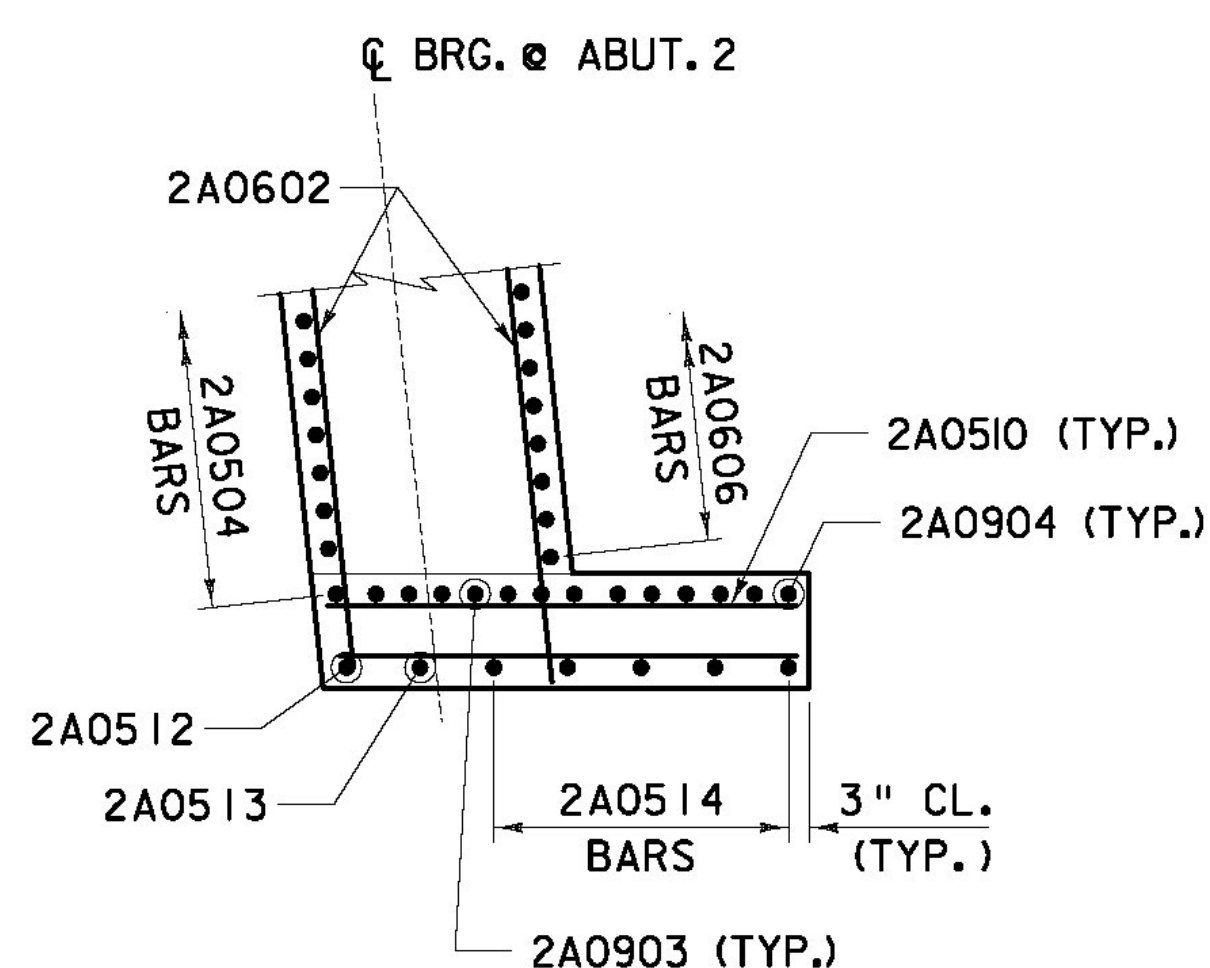
BR6S - ABUTMENT #2 -
CURTAIN WALL #3 - ELEVATION
SCALE: 3/8" = 1'-0"



BR6S - ABUTMENT #2 -
CURTAIN WALL #4 - ELEVATION
SCALE: 3/8" = 1'-0"



SECTION A-A
SCALE: 3/8" = 1'-0"



SECTION B-B
SCALE: 3/8" = 1'-0"

- NOTES:
1. SEE SUPERSTRUCTURE PLAN & DETAILS SHEETS FOR APPROACH SLAB, BACKWALL AND DECK REINFORCEMENT.
 2. ROUGHENED CONSTRUCTION JOINTS SHALL BE RAKE FINISHED TO 1/4" NOMINAL AMPLITUDE.
 3. SEE SHEET 'ZB-100-BR6-418' FOR ADDITIONAL BACKFILL DETAILS AND STRUCTURAL DETAILS ABOVE THE BRIDGE SEAT.
 4. UNDERDRAIN PIPE, 6" SHALL BE INSTALLED THE FULL LENGTH OF THE ABUTMENT STEM WALL, BETWEEN CURTAIN WALLS.

AS BUILT
RECORD PLANS

RFC PLANS - WORK PACKAGE #8
BRIDGE 6S SUBSTRUCTURE
JANUARY 17, 2012

BECK & BELLUCCI, INC. TYLIN INTERNATIONAL

PROJECT NAME: BRATTLEBORO	FILE NAME: ZB-100-BR6-358.dgn	PLOT DATE: 1/17/2012
PROJECT NUMBER: IM 091-(K50)	PROJECT LEADER: Phillip E. Kendall P.E.	DRAWN BY: S. A. Morgan
	DESIGNED BY: Josh Olund, P.E.	CHECKED BY: D. Myers
	BR6S ABUTMENT 2 SECTIONS & REINF.	SHEET ZB-100-BR6-358