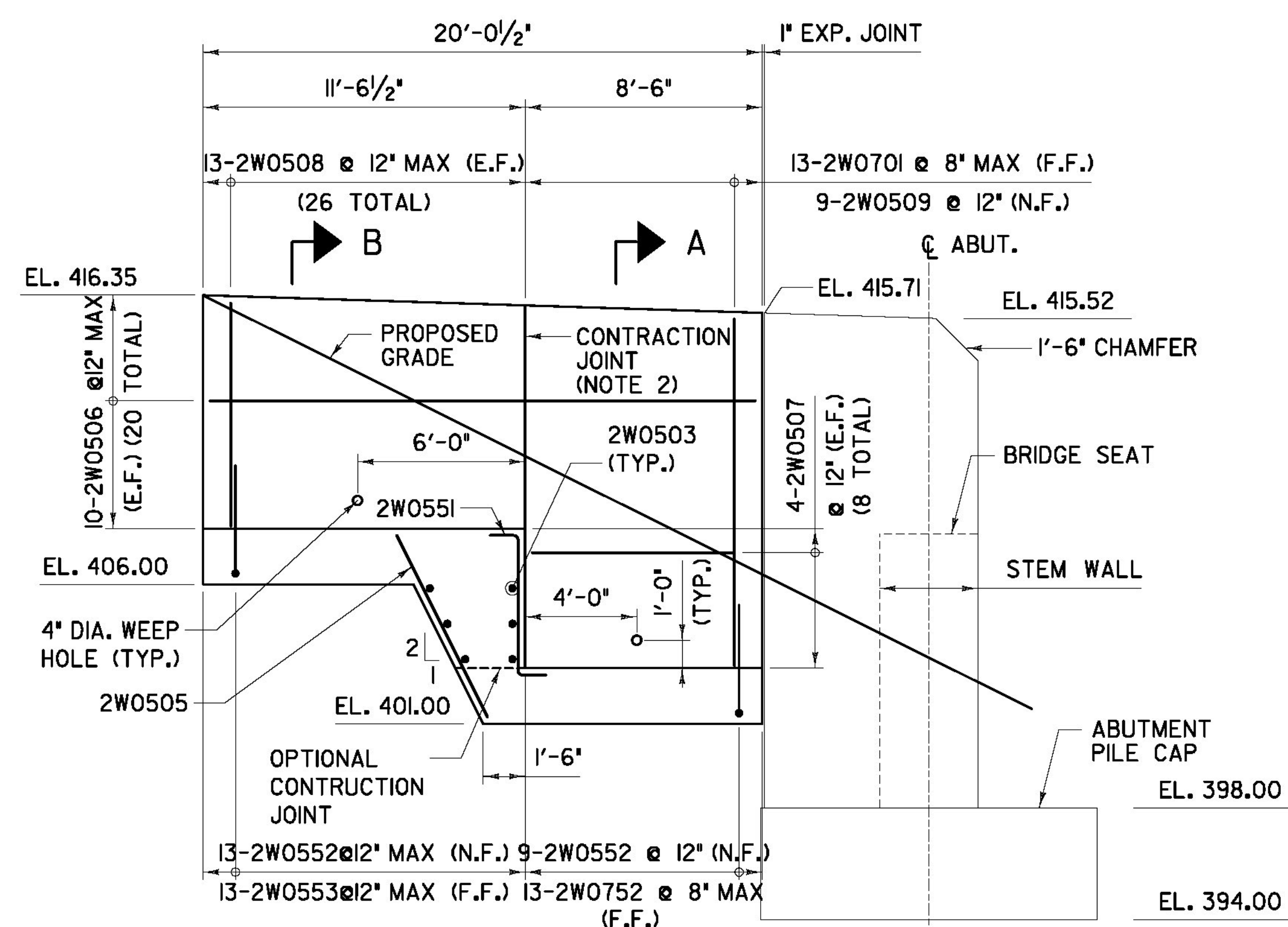


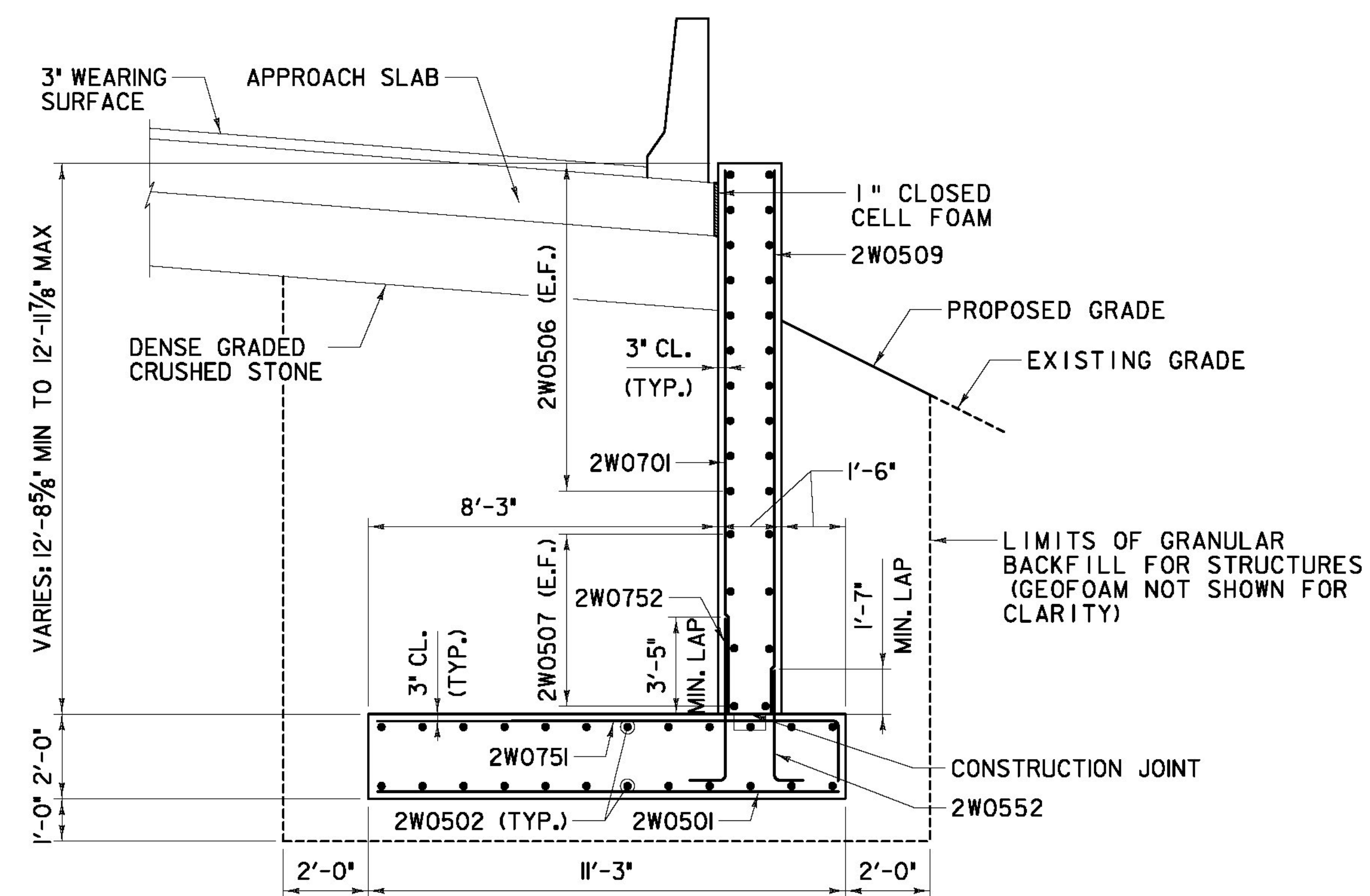
BR6S - ABUTMENT #1 - PLAN OF WW#2

SCALE: 1/4" = 1'-0"



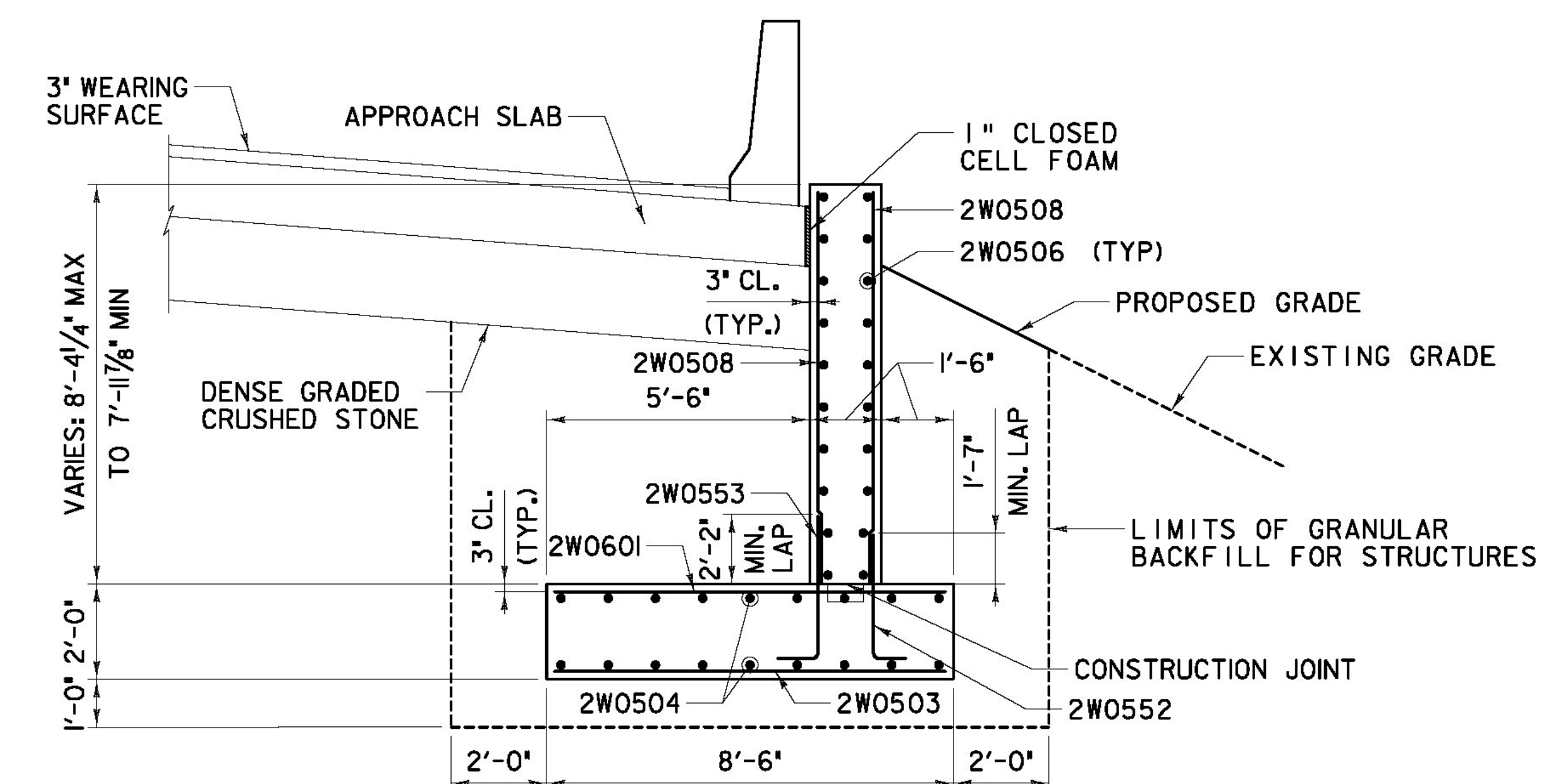
BR6S - ABUTMENT #1 - ELEVATION OF WW#2

SCALE: 1/4" = 1'-0"



SECTION A-A

SCALE: 3/8" = 1'-0"



SECTION B-B

SCALE: 3/8" = 1'-0"

NOTES:

1. SEE SHEET 'ZB-100-BR6-352' FOR WORK POINT COORDINATES.
2. SEE SHEET 'ZB-100-BR6-354' FOR ADDITIONAL WINGWALL NOTES.

RFC PLANS - WORK PACKAGE #8
BRIDGE 6S SUBSTRUCTURE
JANUARY 17, 2012

BECK & BELLUCCI, INC.

TYLIN INTERNATIONAL

PROJECT NAME: BRATTLEBORO

PROJECT NUMBER: IM 091-(K50)

FILE NAME: ZB-100-BR6-355.dgn
PROJECT LEADER: Phillip E. Kendall P.E.
DESIGNED BY: Josh Olund P.E.
BR6S WINGWALL 2 PLAN & ELEVATION

PLOT DATE: 1/17/2012
DRAWN BY: S. Morgan
CHECKED BY: M. Vigilanco
SHEET ZB-100-BR6-355

AS BUILT
RECORD PLANS