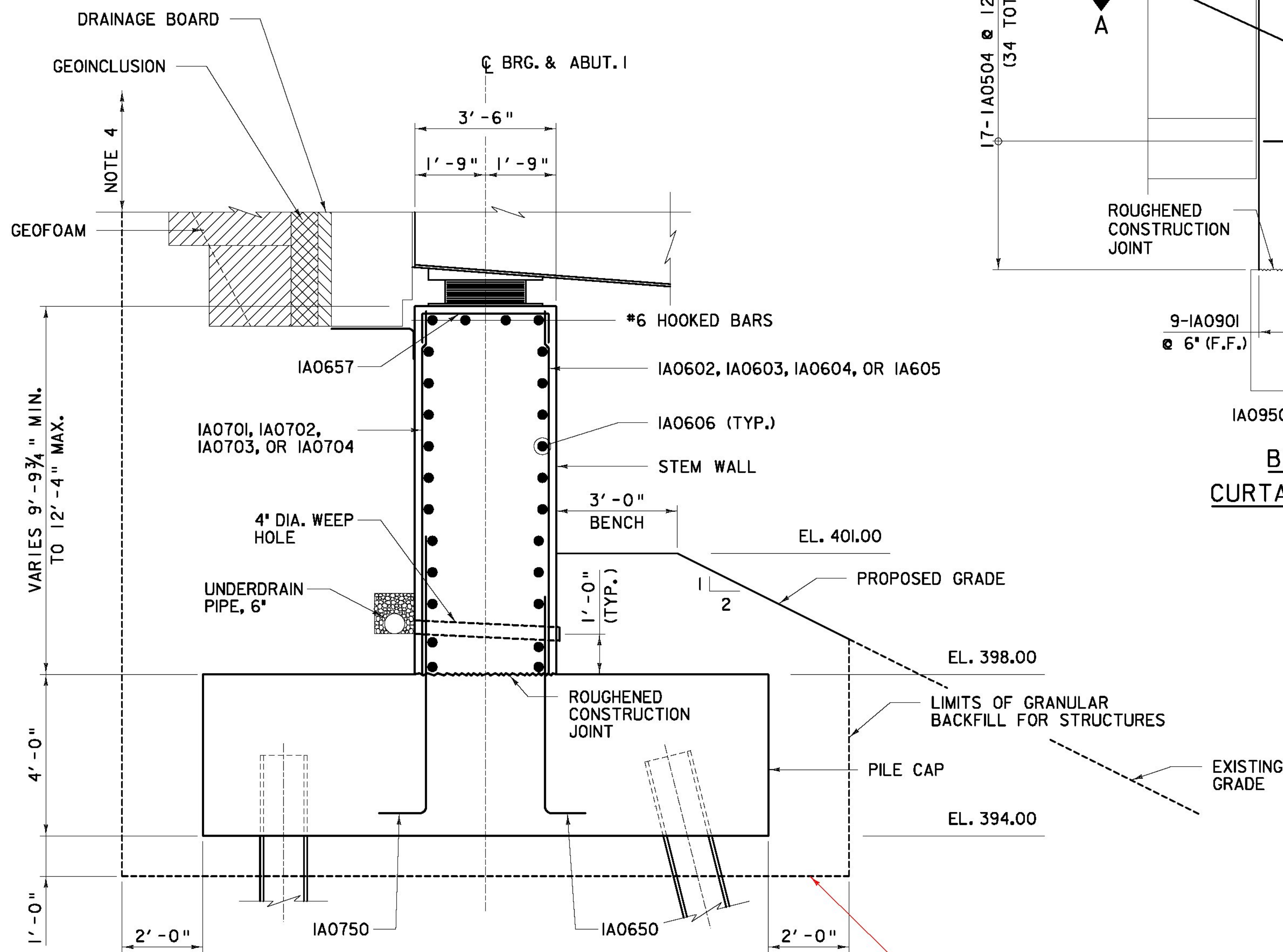


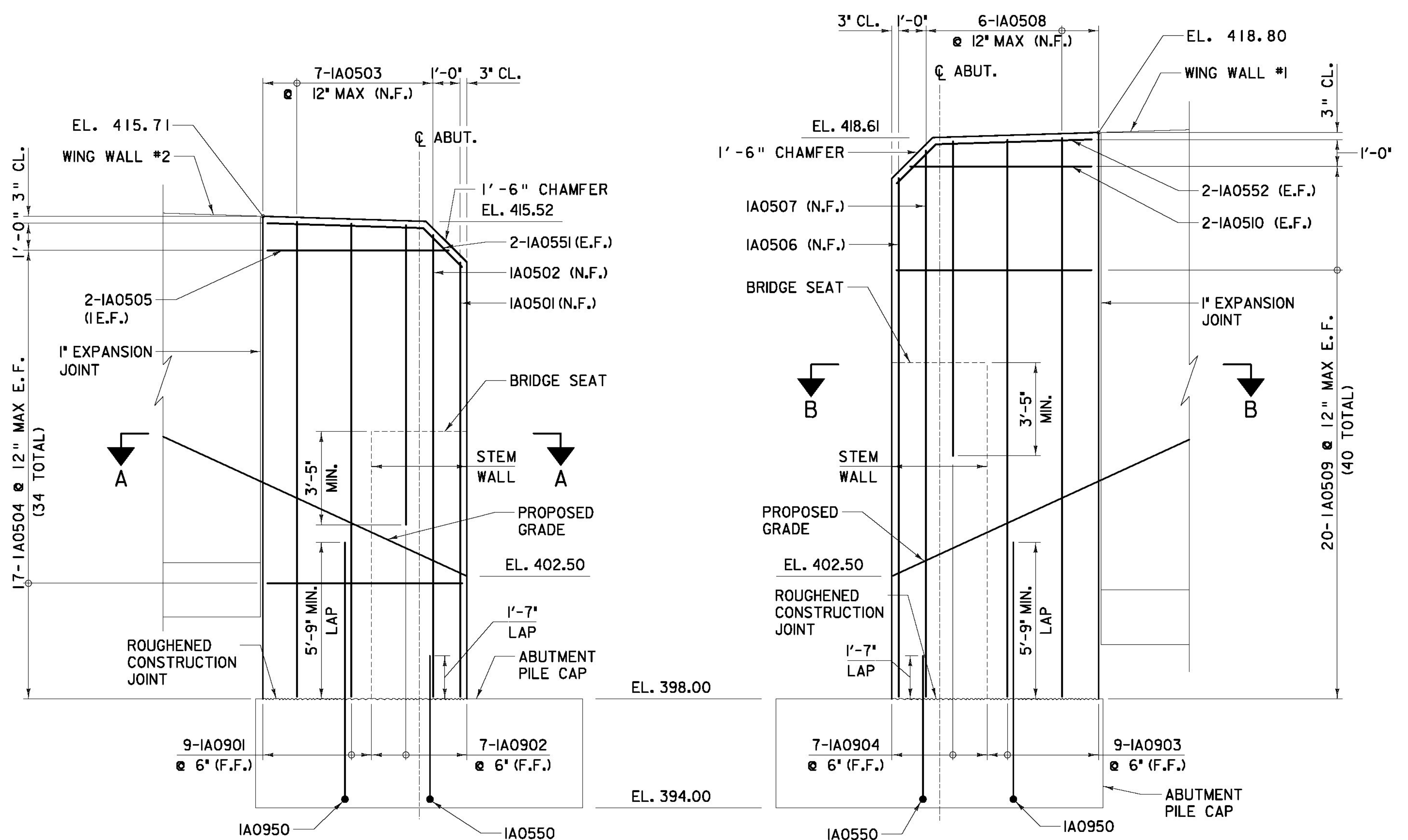
NOTES:

1. GEOFOAM NEED NOT BE CUT TO MATCH ABUTMENT SKEW. GAPS BETWEEN GEOFOAM & WINGWALLS TO BE FILLED WITH UNCOMPACTED PEASTONE MEETING THE GRADATION REQUIREMENTS TO TABLE 704.02A OF THE STD. SPECS.
2. SEE SUPERSTRUCTURE PLAN & DETAILS SHEETS FOR APPROACH SLAB, BACKWALL AND DECK REINFORCEMENT.
3. ROUGHENED CONSTRUCTION JOINTS SHALL BE RAKE FINISHED TO 1/4" NOMINAL AMPLITUDE.
4. SEE SHEET 'ZB-100-BR6-418' FOR ADDITIONAL BACKFILL DETAILS AND STRUCTURAL DETAILS ABOVE THE BRIDGE SEAT.
5. UNDERDRAIN PIPE, 6" SHALL BE INSTALLED THE FULL LENGTH OF THE ABUTMENT STEMWALL, BETWEEN CURTAIN WALLS.



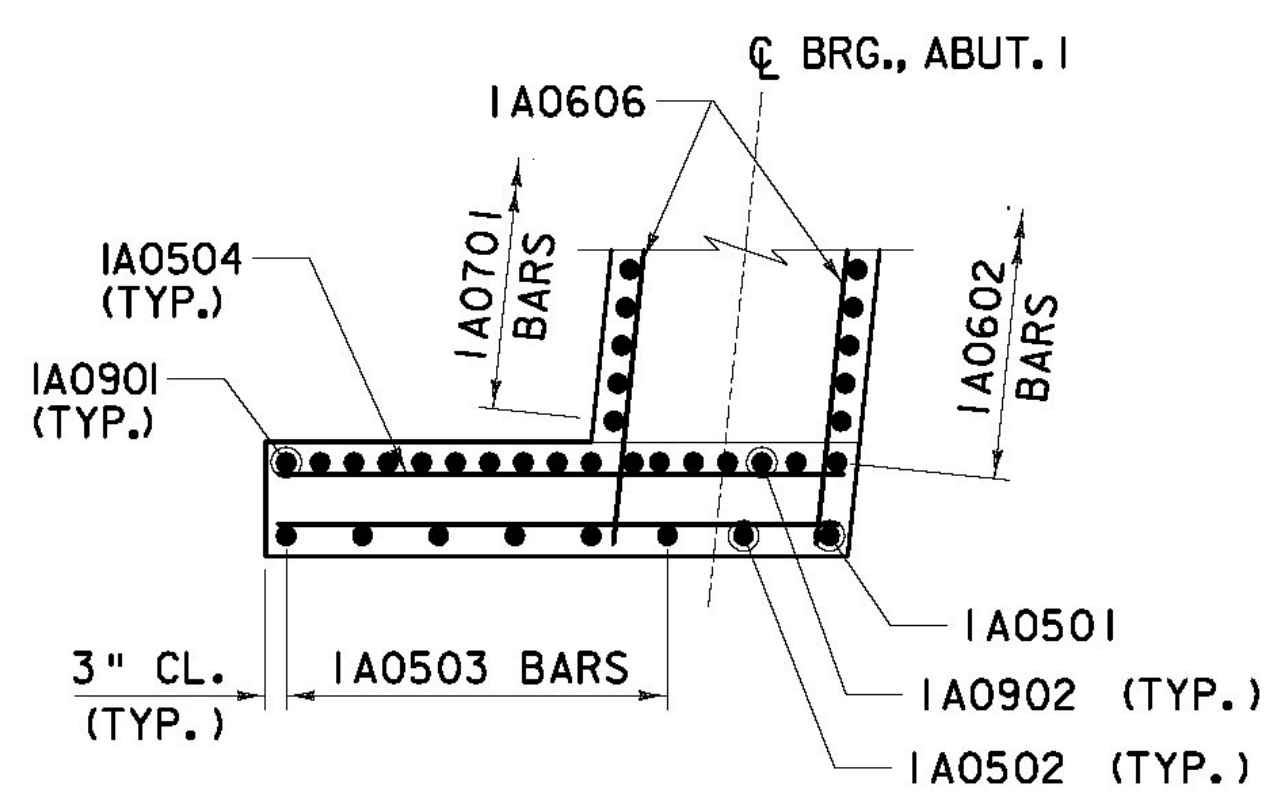
TYPICAL SECTION THRU ABUTMENT
SCALE: 1/2" = 1'-0"
(PILE CAP REINFORCEMENT NOT SHOWN FOR CLARITY)

USED 12' UNDERCUT WHERE NEEDED = TOE OF WINGWALL 1 AND 3.

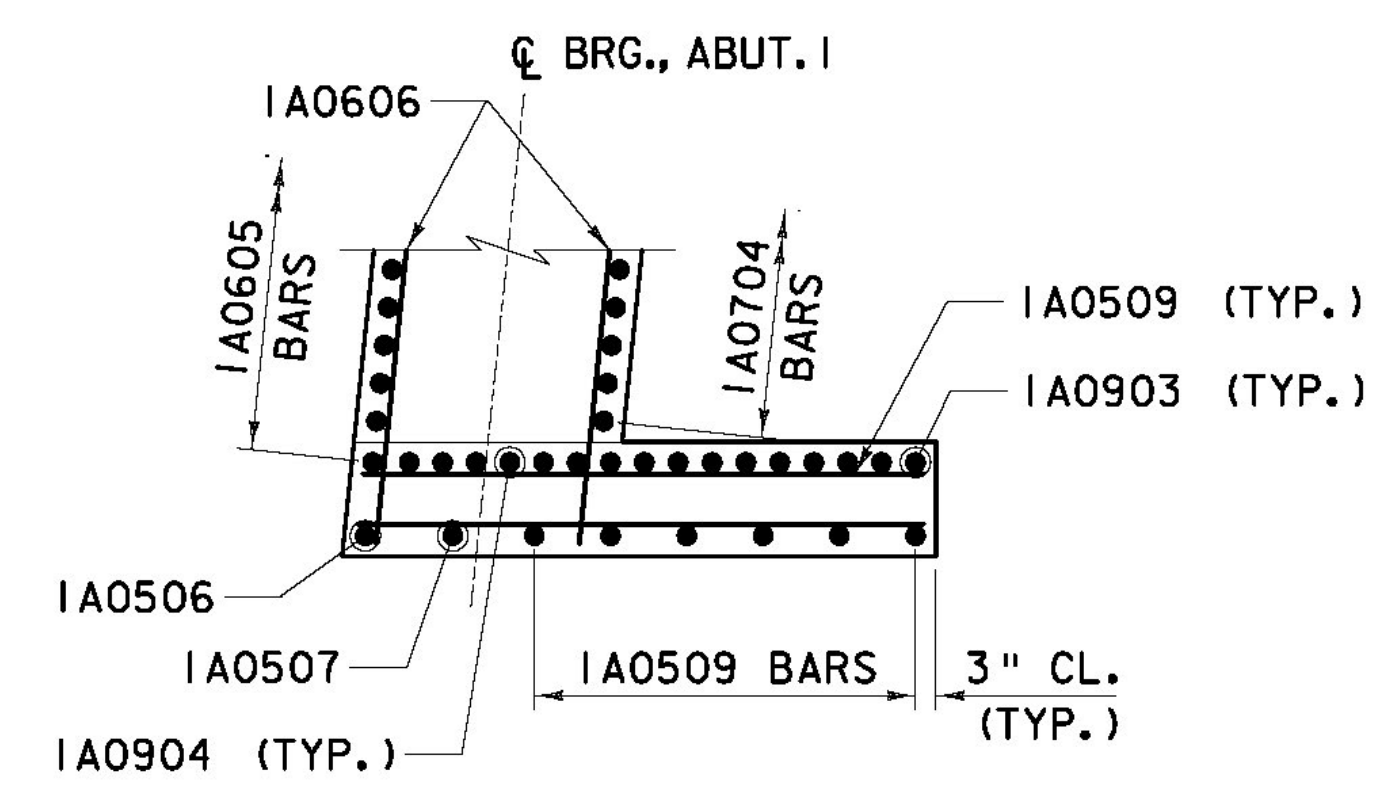


BR6S - ABUTMENT #1 - CURTAIN WALL #2 - ELEVATION
SCALE: 3/8" = 1'-0"

BR6S - ABUTMENT #1 - CURTAIN WALL #1 - ELEVATION
SCALE: 3/8" = 1'-0"



SECTION A-A
SCALE: 3/8" = 1'-0"



SECTION B-B
SCALE: 3/8" = 1'-0"

AS BUILT RECORD PLANS

BECK & BELLUCCI, INC. TYLIN INTERNATIONAL

PROJECT NAME: BRATTLEBORO	PLOT DATE: 5/15/2013
PROJECT NUMBER: IM 091-(K50)	DRAWN BY: S. A. Morgan
FILE NAME: ZB-100-BR6-353.dgn	CHECKED BY: Peter Smith P.E.
PROJECT LEADER: Phillip E. Kendall P.E.	SHEET ZB-100-BR6-353
DESIGNED BY: Josh Olund, P.E.	
BR6S ABUTMENT I SECTIONS	