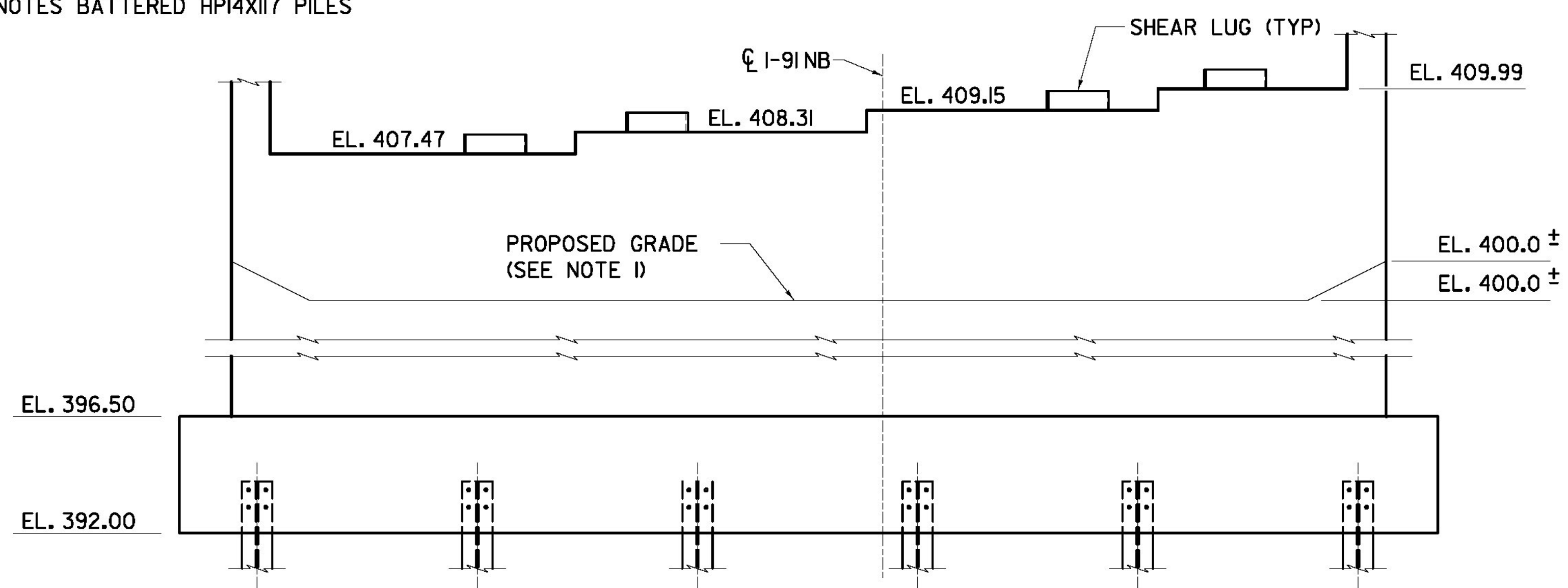
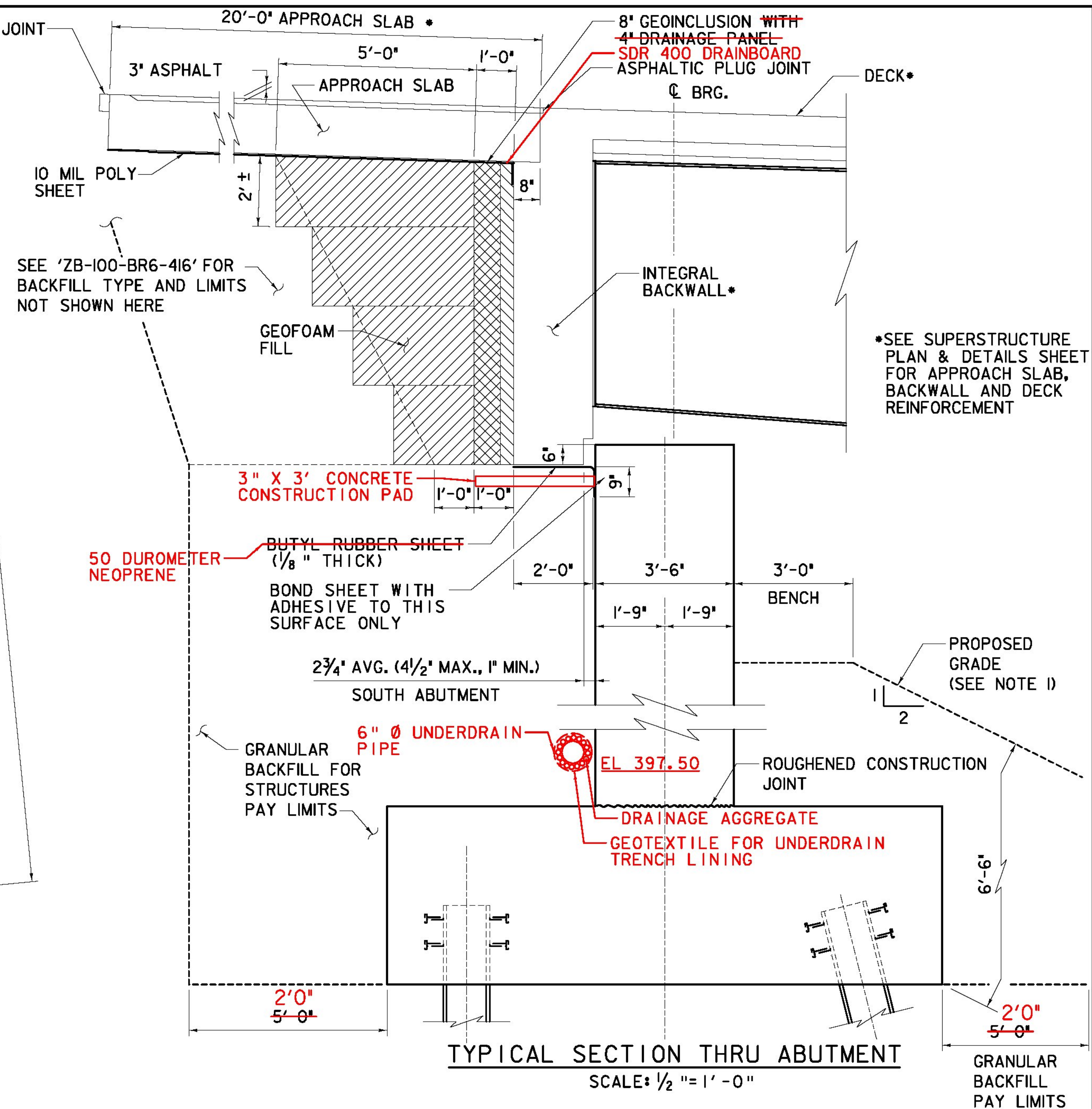


**ABUTMENT #1 - PLAN**  
SCALE: 1/4" = 1' - 0"

**LEGEND:**  
 I DENOTES VERTICAL HPI4X17 PILES  
 I I DENOTES BATTERED HPI4X17 PILES



**ABUTMENT #1 - ELEVATION**  
(LOOKING BACK ON STA.)  
SCALE: 1/4" = 1' - 0"



**TYPICAL SECTION THRU ABUTMENT**  
SCALE: 1/2" = 1' - 0"

	STATION	OFFSET	N	E
END APPROACH SLAB #1	360+32.6873	0.00	126,931.67	1,619,510.94
CL BRG. ABUTMENT #1	360+55.8210	0.00	126,966.85	1,619,509.18
WINGWALL #1 WP 1	360+57.7334	19.19 LT	126,957.36	1,619,492.38
WINGWALL #1 WP 2	360+26.3641	19.09 LT	126,931.59	1,619,510.90
WINGWALL #2 WP 1	360+53.2549	25.17 RT	126,979.30	1,619,531.20
WINGWALL #2 WP 2	360+23.5271	25.20 RT	126,955.42	1,619,548.41

- NOTES:**
- ONCE SUBSTRUCTURE IS COMPLETED, PROPOSED GRADE TO MATCH EXISTING GRADE AS PRIOR TO STARTING WORK.
  - FOR BEARING DETAILS SEE SHEET 'ZB-100-BR6-411' AND '412'.
  - GEOFOAM NEED NOT BE CUT TO MATCH ABUTMENT SKEW. GAPS BETWEEN GEOFOAM & WINGWALLS TO BE FILLED WITH UNCOMPACTED PEASTONE MEETING THE GRADATION REQUIREMENTS TO TABLE 704.02A OF THE STD. SPECS.
  - SEE SUPERSTRUCTURE PLAN & DETAILS SHEETS FOR APPROACH SLAB, BACKWALL AND DECK REINFORCEMENT
  - SEE SHEET 'ZB-100-BR6-305' FOR PILE CAP GEOMETRY AND PILE LAYOUT.

**AS BUILT RECORD PLANS**

<b>BECK &amp; BELLUCCI, INC.</b>	<b>TYLIN INTERNATIONAL</b>	PROJECT NAME: BRATTLEBORO	PLOT DATE: 5/15/2013
		PROJECT NUMBER: IM 091-(K50)	DRAWN BY: S. A. Morgan
FILE NAME: ZB-100-BR6-301.dgn		DESIGNED BY: Richard Bollinger, P.E.	CHECKED BY: J. England, P.E.
PROJECT LEADER: Phillip E. Kendall P.E.		BR 6N - ABUTMENT 1 PLAN & ELEVATION	
SHEET ZB-100-BR6-301			