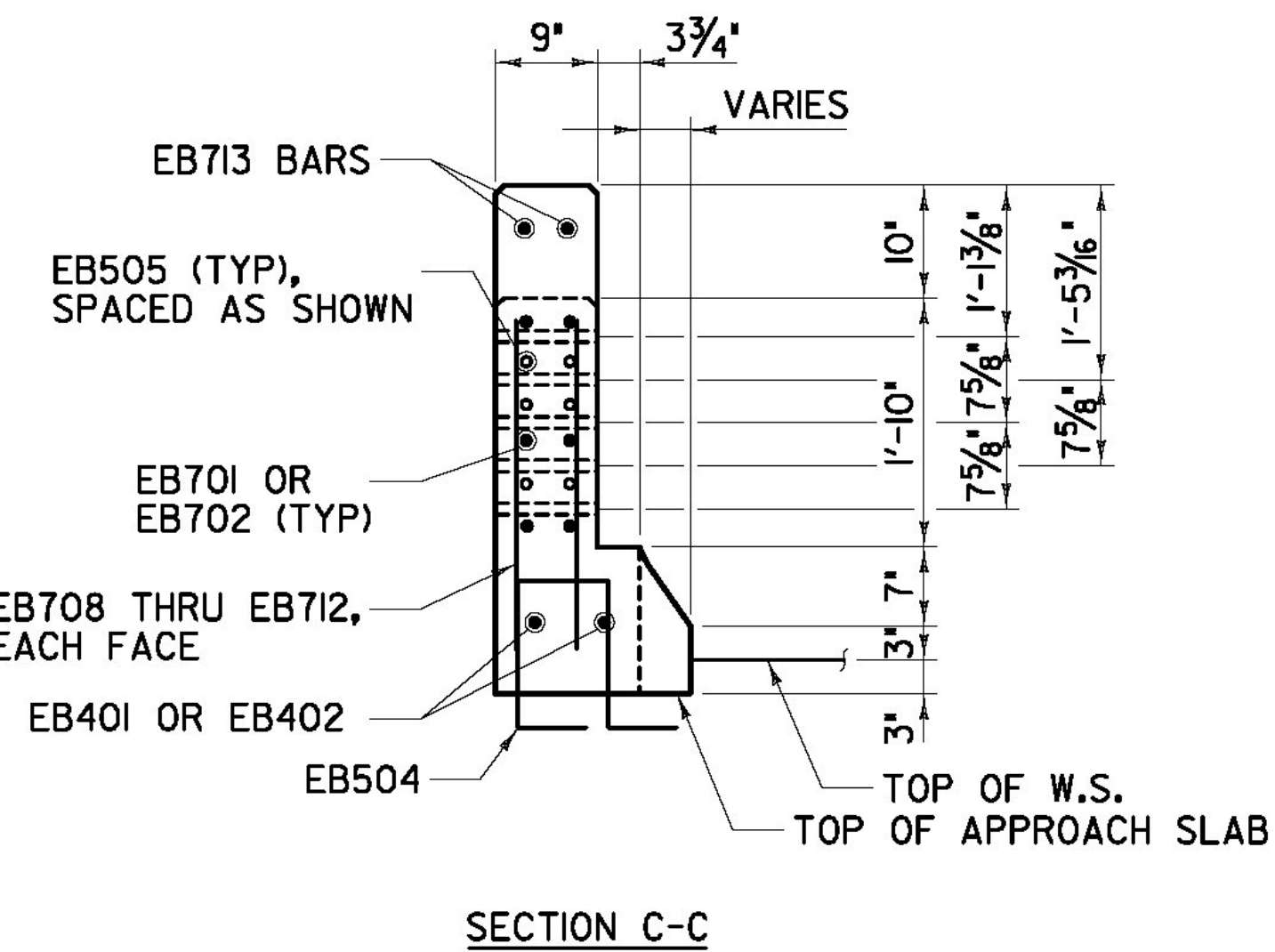
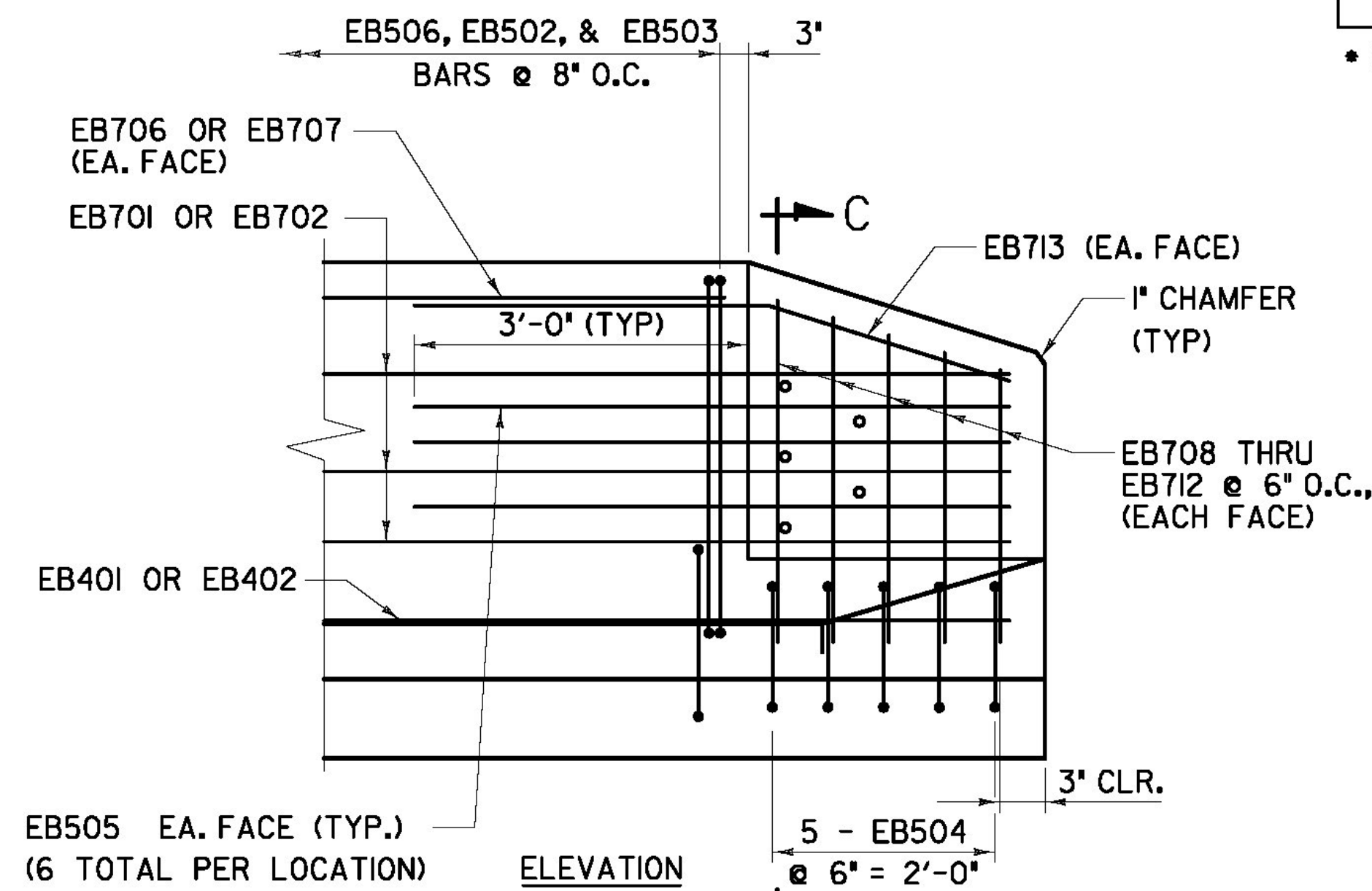
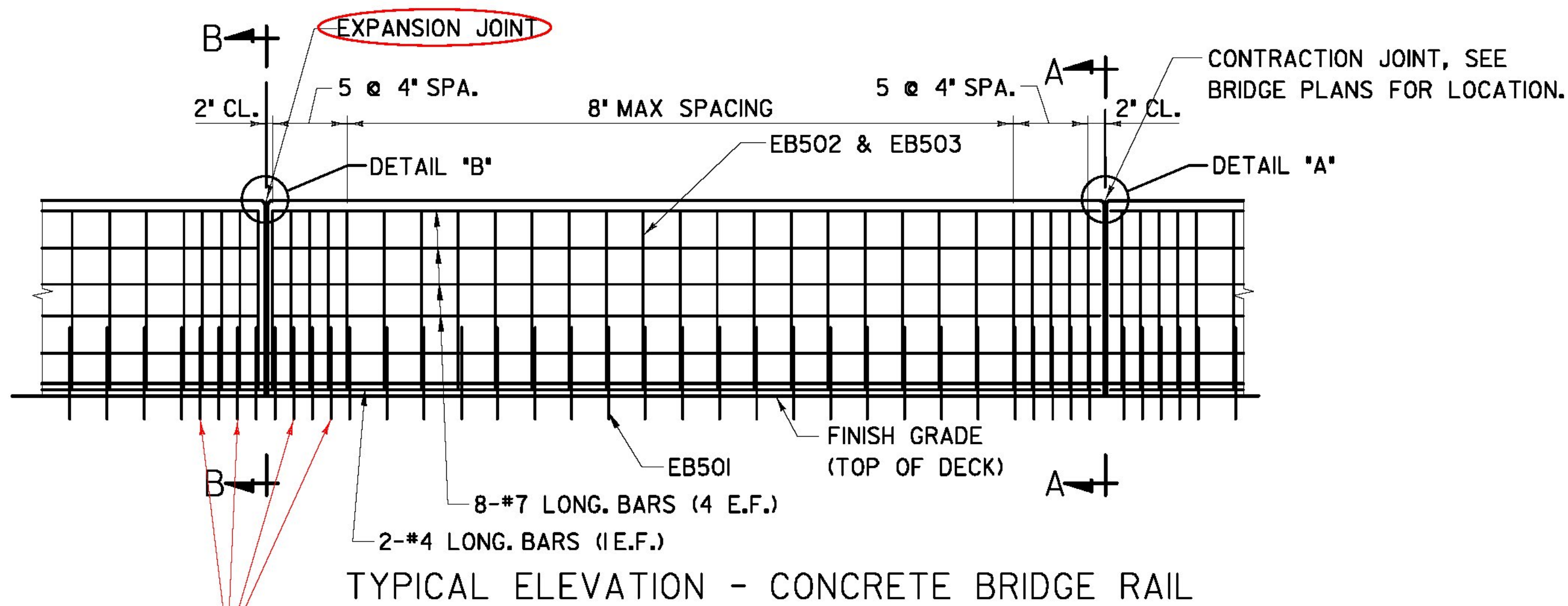


BARRIER REINFORCEMENT TABLE (PER BARRIER LENGTH)					
REINF. SET	#4 LONG. BAR MARK	#7 LONG. BAR MARK	EB501 OR EB506 QTY.	EB502 QTY.	EB503 QTY.
A	EB401	EB701	20 *	20 *	20 *
B	EB402	EB702	20 *	20 *	20 *
C	EB403	EB703	24	24	24
D	EB404	EB704	12	12	12
E	EB405	EB705	27	27	27

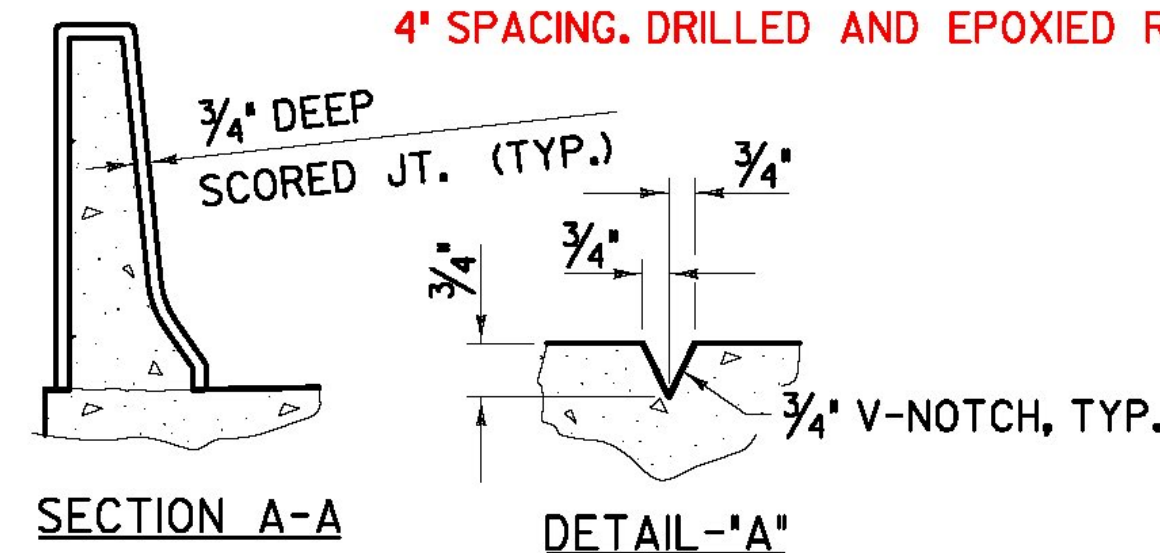
* SEE NOTE 6



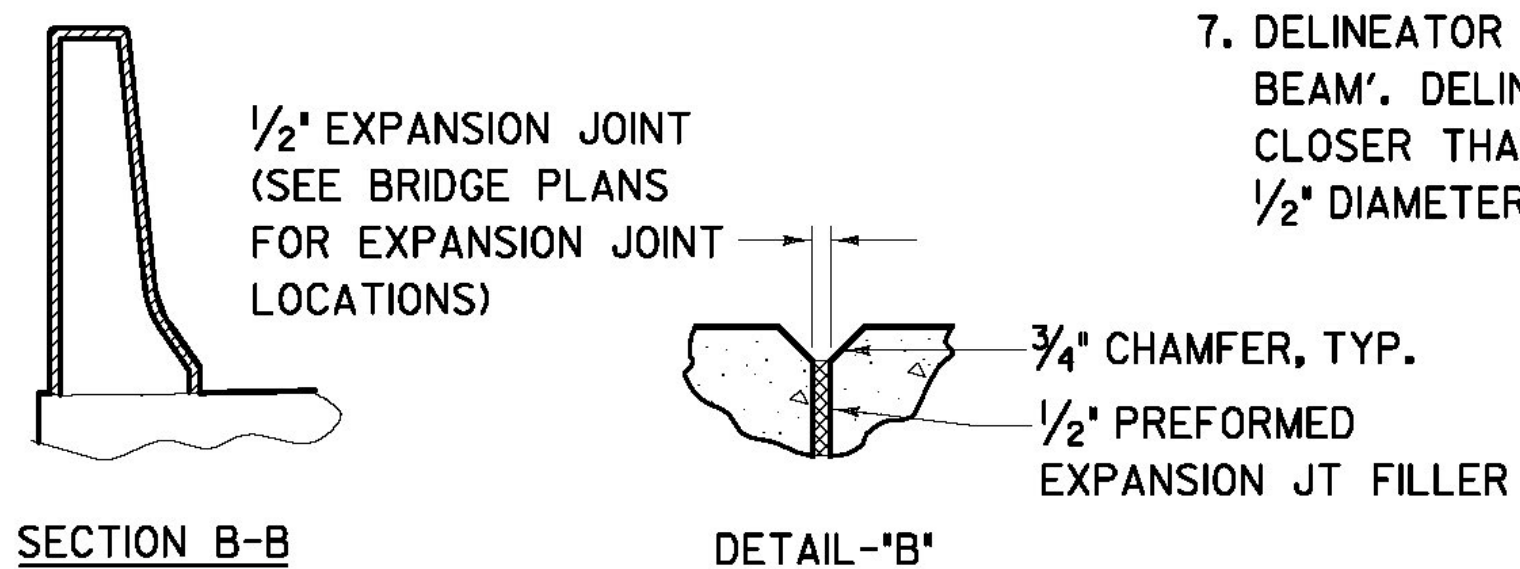
CONCRETE BARRIER TERMINATION DETAILS



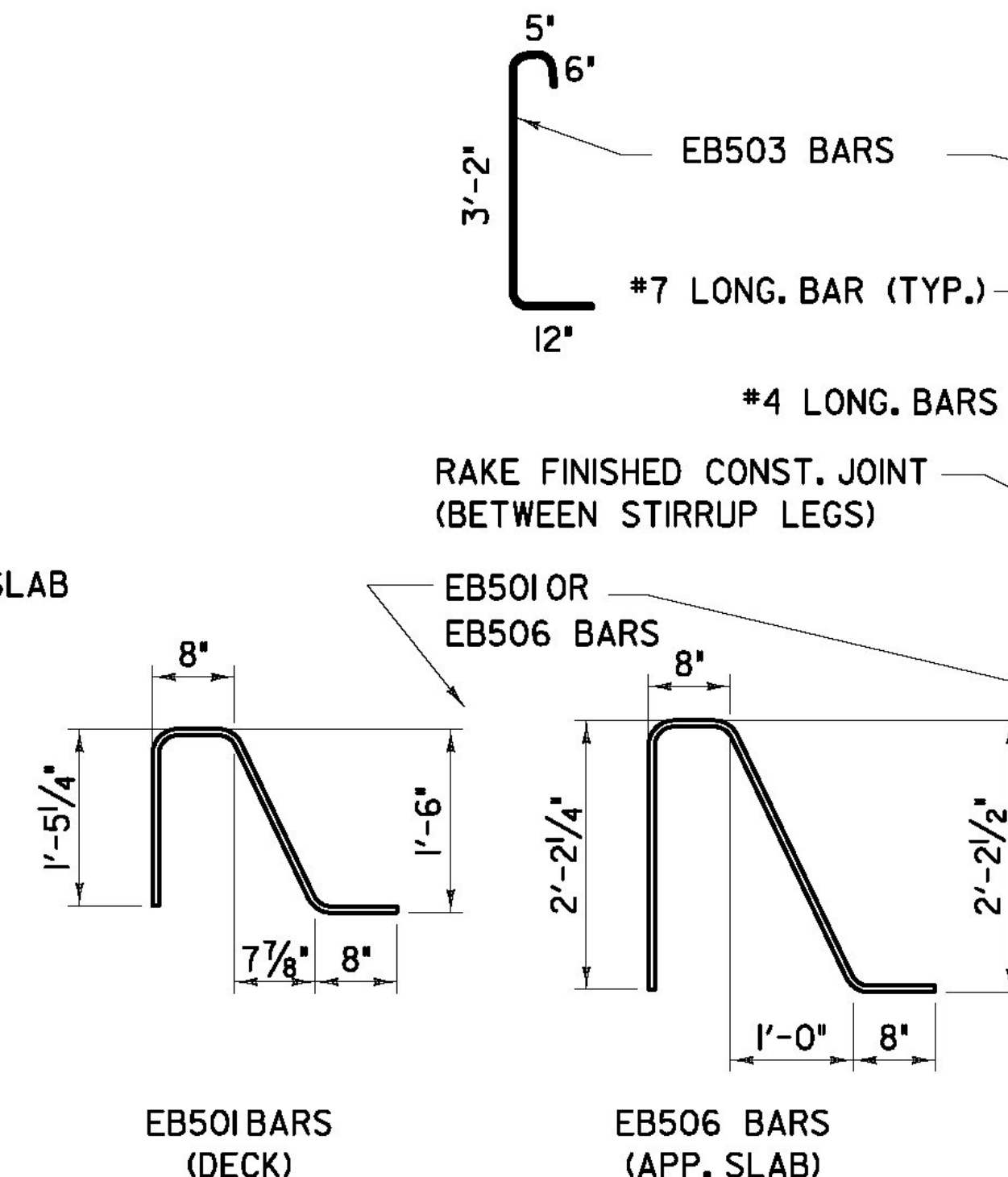
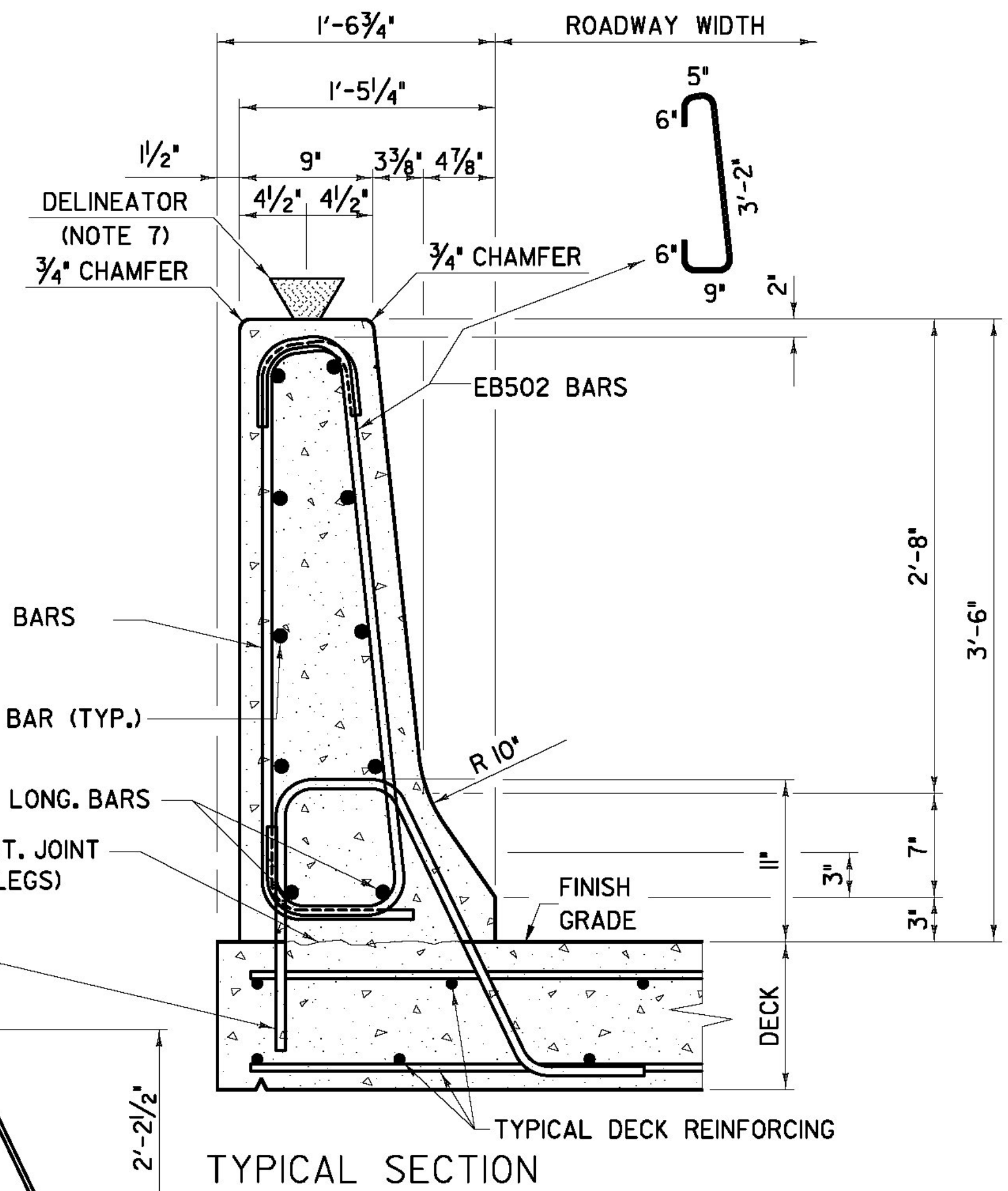
EXPANSION JOINTS AT DECK ONLY: OMITTED EXTRA STIRRUPS FOR 4" SPACING. DRILLED AND EPOXIED REPLACEMENT STIRRUPS.



CONTRACTION JOINT DETAILS



EXPANSION JOINT DETAILS



GENERAL NOTES:

- RAIL DESIGNED TO MEET TL-5 DESIGN REQUIREMENTS.
- TOP OF PARAPET SHALL BE 3'-6" ABOVE FINISH GRADE, MEASURED ON TRAFFIC FASCIA.
- BARRIER EXPANSION JOINTS SHALL BE INSTALLED AT THE BEGINNING AND END OF BRIDGE LOCATIONS AND DIRECTLY OVER THE PIERS. EXPANSION JOINTS SHALL BE SKEWED TO FOLLOW THE CENTERLINE OF BEARING.
- CONTRACTION JOINTS SHALL BE SKEWED TO MATCH ADJACENT SUBSTRUCTURE UNIT.
- FABRICATION AND MATERIALS SHALL BE IN ACCORDANCE WITH SPECIAL PROVISION 'BRIDGE RAILING, F-SHAPE CONCRETE'.
- THE QUANTITY OF #5 BARS, AS NOTED, SHALL BE REDUCED BY SIX FOR BARRIER TERMINATION SECTIONS. THIS REDUCTION IS REFLECTED IN THE REINFORCEMENT SCHEDULE ON SHEET 'ZB-100-BR5-502'.
- DELINEATOR DETAILS SHALL BE IN ACCORDANCE WITH VTRANS STANDARD SHEET S-364A - 'BRIDGE RAILING, GALVANIZED; 3 RAIL BOX BEAM'. DELINEATORS SHALL BE INSTALLED AT 20 FT MAXIMUM SPACES ALONG THE LENGTH OF THE BARRIERS AND SHALL BE NO CLOSER THAN 2 FT FROM BARRIER CONTRACTION AND EXPANSION JOINTS. INSTALLATION OF THE DELINEATORS SHALL BE MADE USING 1/2" DIAMETER, HOT-DIPPED GALVANIZED ANCHOR BOLTS, EITHER AN EXPANSION TYPE OR DRILLED AND GROUTED.

AS BUILT
RECORD PLANS

BECK & BELLUCCI, INC.

TYLIN INTERNATIONAL

PROJECT NAME: BRATTLEBORO

PROJECT NUMBER: IM 091-(K50)

FILE NAME: ZB-100-BR5-458.dgn

PROJECT LEADER: Phillip E. Kendall P.E.

DESIGNED BY: Josh Olund P.E.

BR55 F BARRIER DETAILS

PLOT DATE: 5/15/2013

DRAWN BY: Scott Morgan

CHECKED BY: D. Myers

SHEET ZB-100-BR5-458