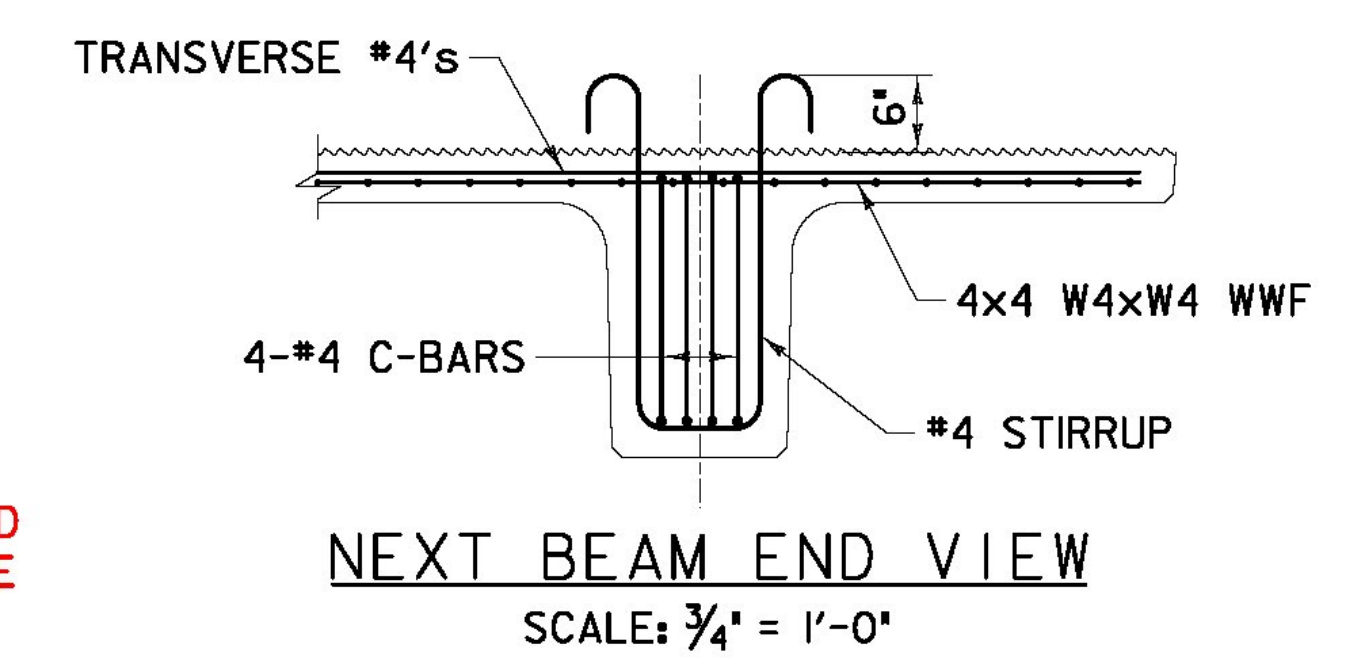
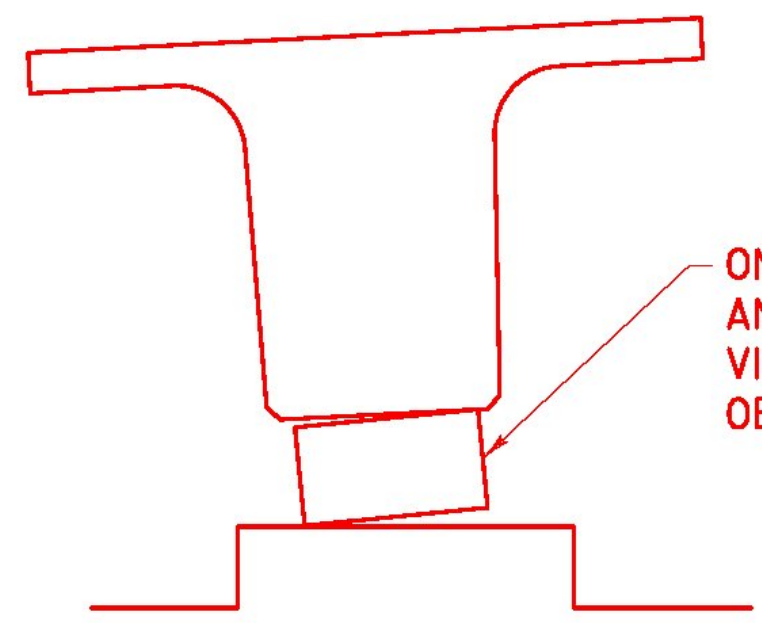
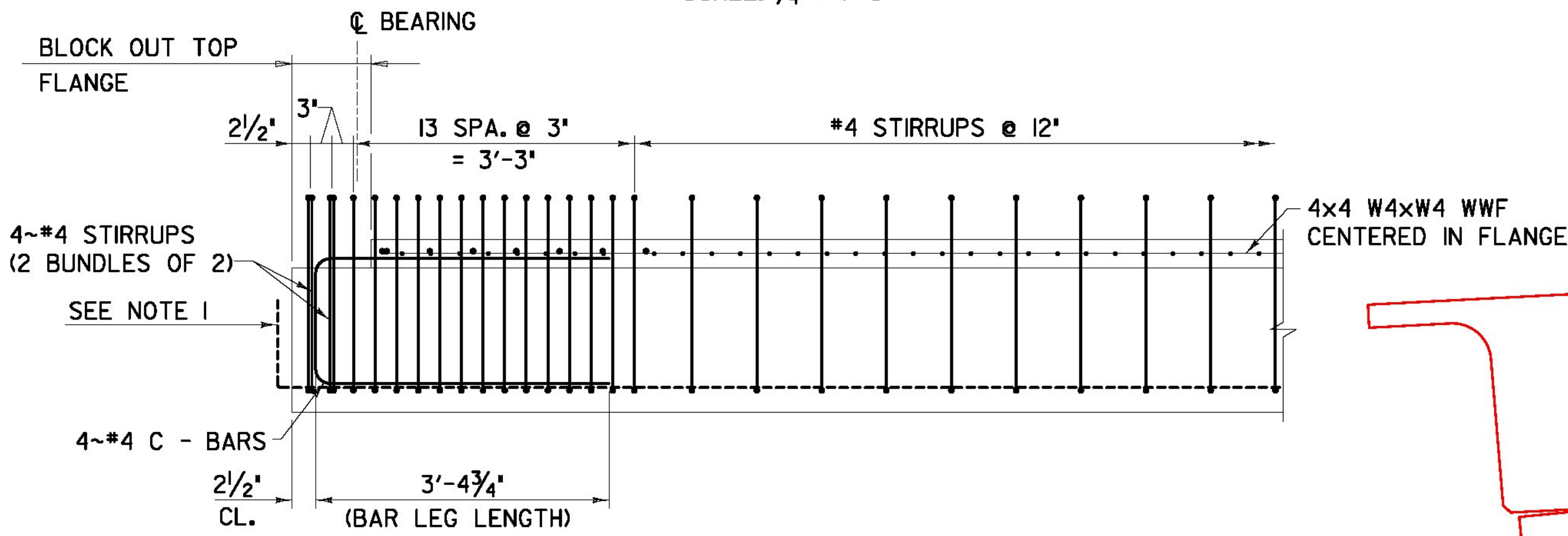


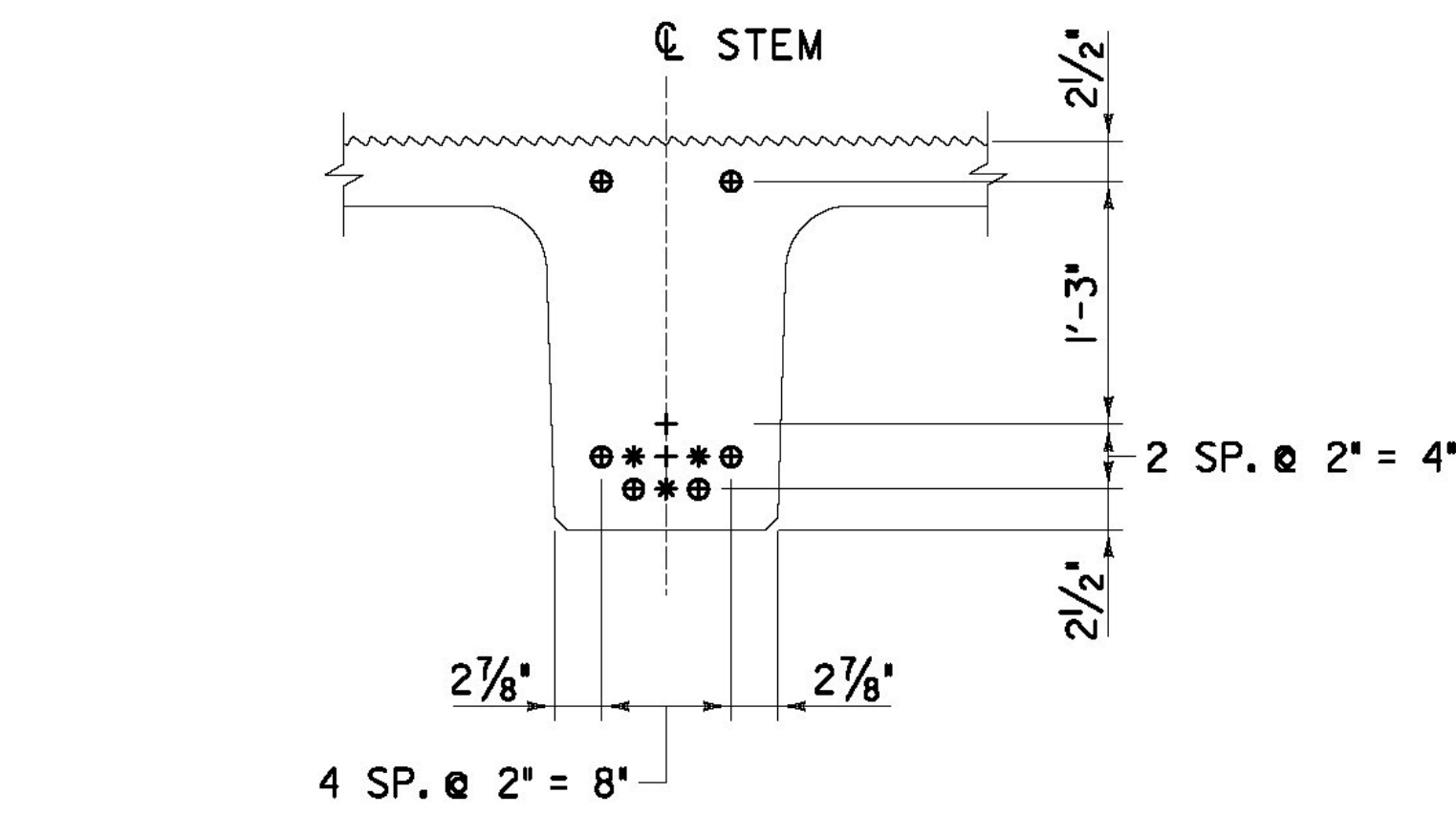
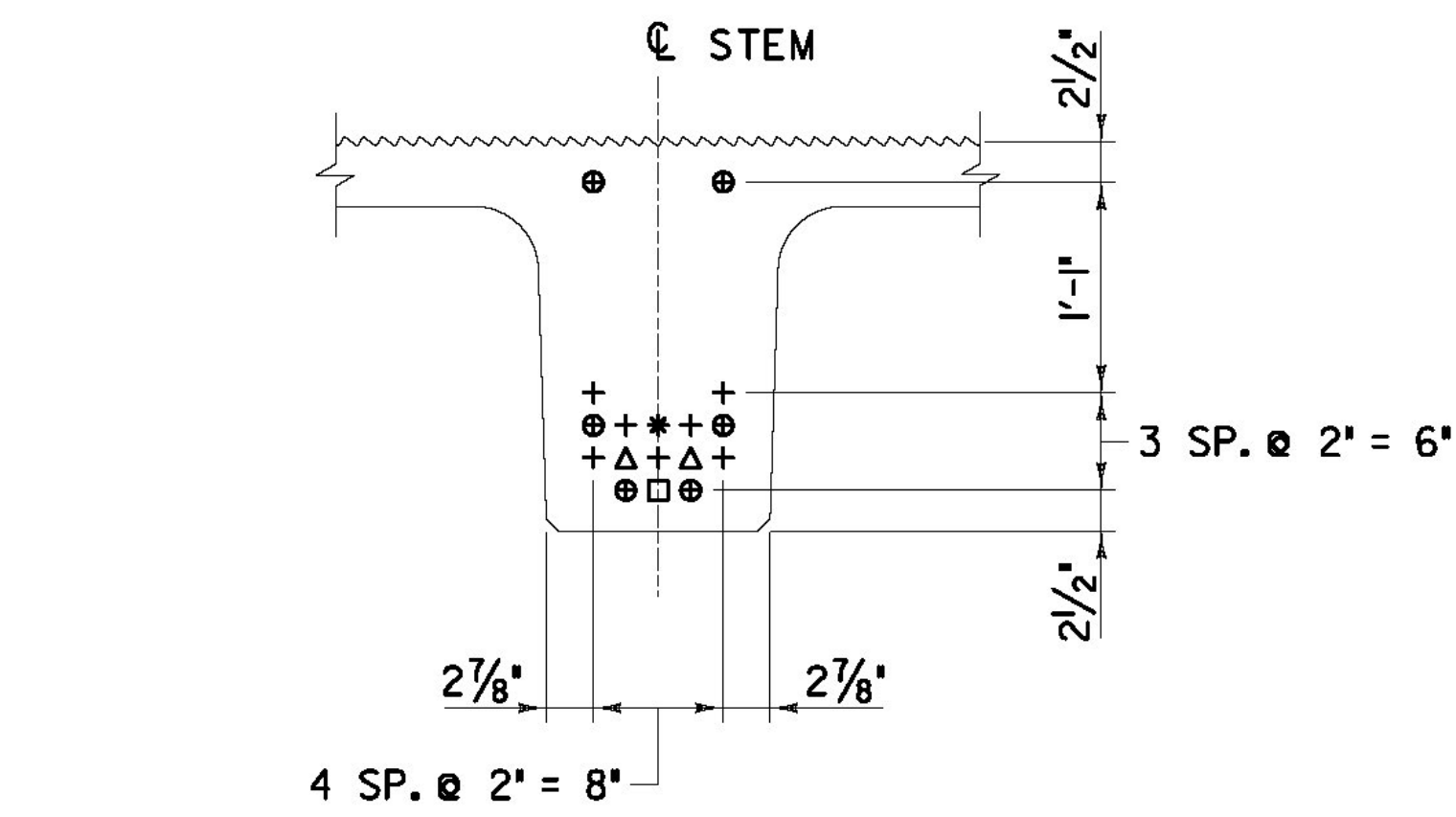
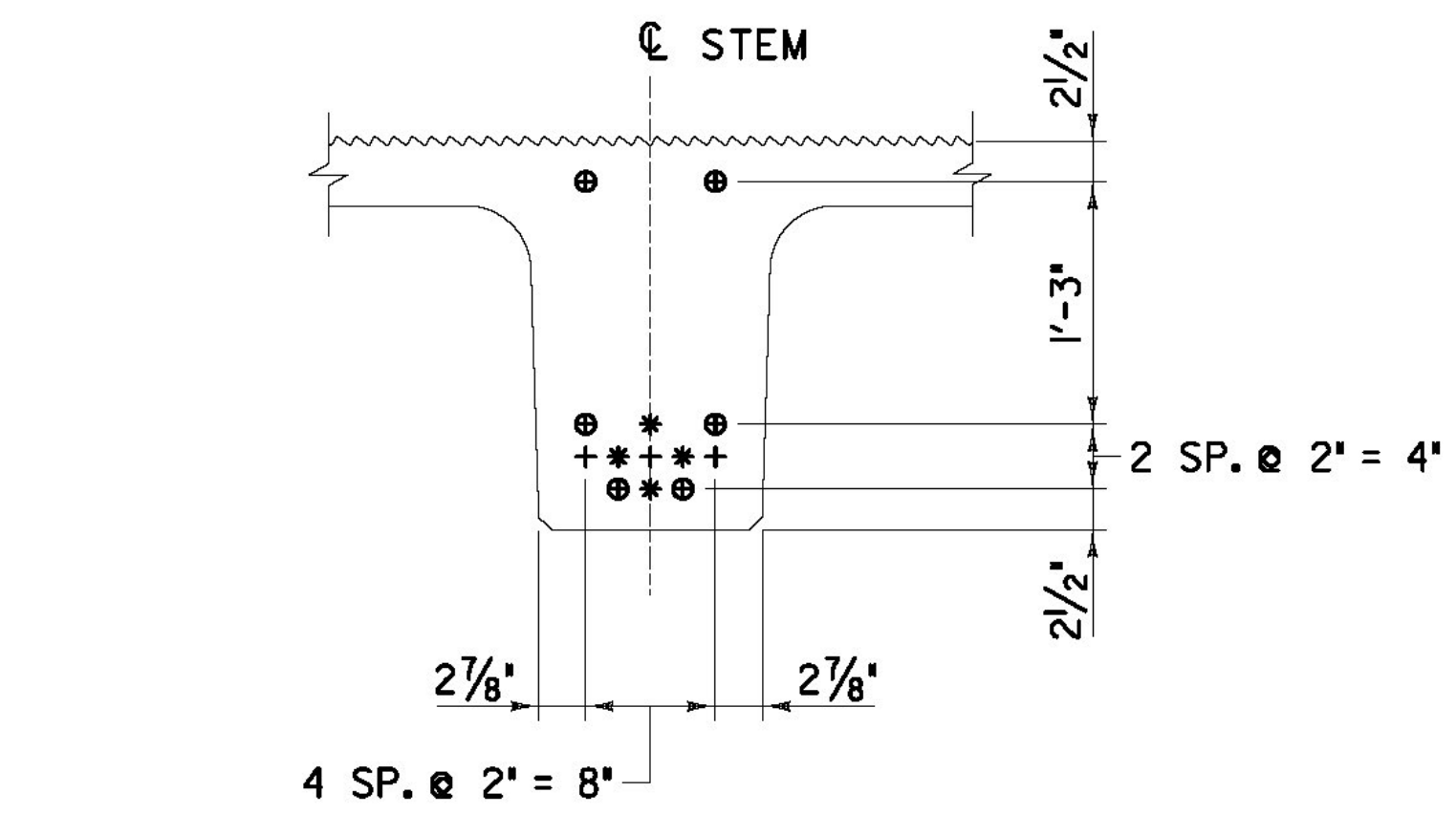
LOCATION	"a"	"b"
ABUT. #1	3/8"	3 3/16"
PIER #1	3/8"	3 3/16"
PIER #2	7/16"	3 1/4"
ABUT. #2	7/16"	3 1/4"



**BEARING NOTES:**

- BEARINGS SHALL CONFORM TO APPLICABLE SUBSECTIONS OF STANDARD SPECIFICATION SECTIONS 531 AND 731 AND CRITERIA NOTED WITHIN THESE PLANS.
- ALTERNATE CONFIGURATIONS FOR BEARINGS MAY BE SUBMITTED FOR APPROVAL. ANY ALTERNATE SUBMITTED SHALL BE DESIGNED AND CERTIFIED TO MEET THE DESIGN LOADS AND CRITERIA SHOWN ON THIS SHEET AND APPLICABLE SECTIONS OF AASHTO LRFD BRIDGE DESIGN SPECIFICATIONS, 4TH EDITION WITH INTERIMS THROUGH 2009.
- DESIGN CRITERIA
  - BEARING PAD TO CONCRETE DESIGN PRESSURE = 1000 PSI MAXIMUM
  - MAXIMUM ALLOWABLE DESIGN ROTATION = 0.020 RADIAN
  - DESIGN LOAD PER BEARING (SERVICE I)
 

DC & DW	36 KIPS
LL + IM	50 KIPS
- ELASTOMERIC BEARINGS DESIGNED IN ACCORDANCE WITH AASHTO LRFD, METHOD A.
- ELASTOMER SHALL HAVE A MINIMUM SHEAR MODULUS OF 140 PSI.
- SEE GENERAL NOTES SHEET 'ZB-100-BR5-102' FOR ADDITIONAL BEARING NOTES.



**LEGEND:**

- + FULLY BONDED STRAND
- ⊕ FULLY BONDED STRAND, EXTEND 12' FROM GIRDER ENDS
- \* DEBOND 0.5 FT. FROM EACH END
- △ DEBOND 6 FT. FROM EACH END
- DEBOND 12 FT. FROM EACH END

**NEXT BEAM NOTES:**

- PRESTRESSING STRANDS EXTENDED FROM THE GIRDER STEM (NOTED IN SECTION VIEW) SHALL BE TURNED UPWARD WITH A 90° BEND, 4' FROM THE STEM END.

AS BUILT RECORD PLANS

BECK & BELLUCCI, INC. TYLIN INTERNATIONAL

PROJECT NAME:	BRATTLEBORO
PROJECT NUMBER:	IM 091-(K50)
FILE NAME:	ZB-100-BR5-457.dgn
PROJECT LEADER:	Phillip E. Kendall P.E.
DESIGNED BY:	J. Olund P.E.
BRSS NEXT BEAM TENSIONING SCHEDULE	
PLOT DATE:	5/15/2013
DRAWN BY:	S. Morgan
CHECKED BY:	D. Myers
SHEET	ZB-100-BR5-457