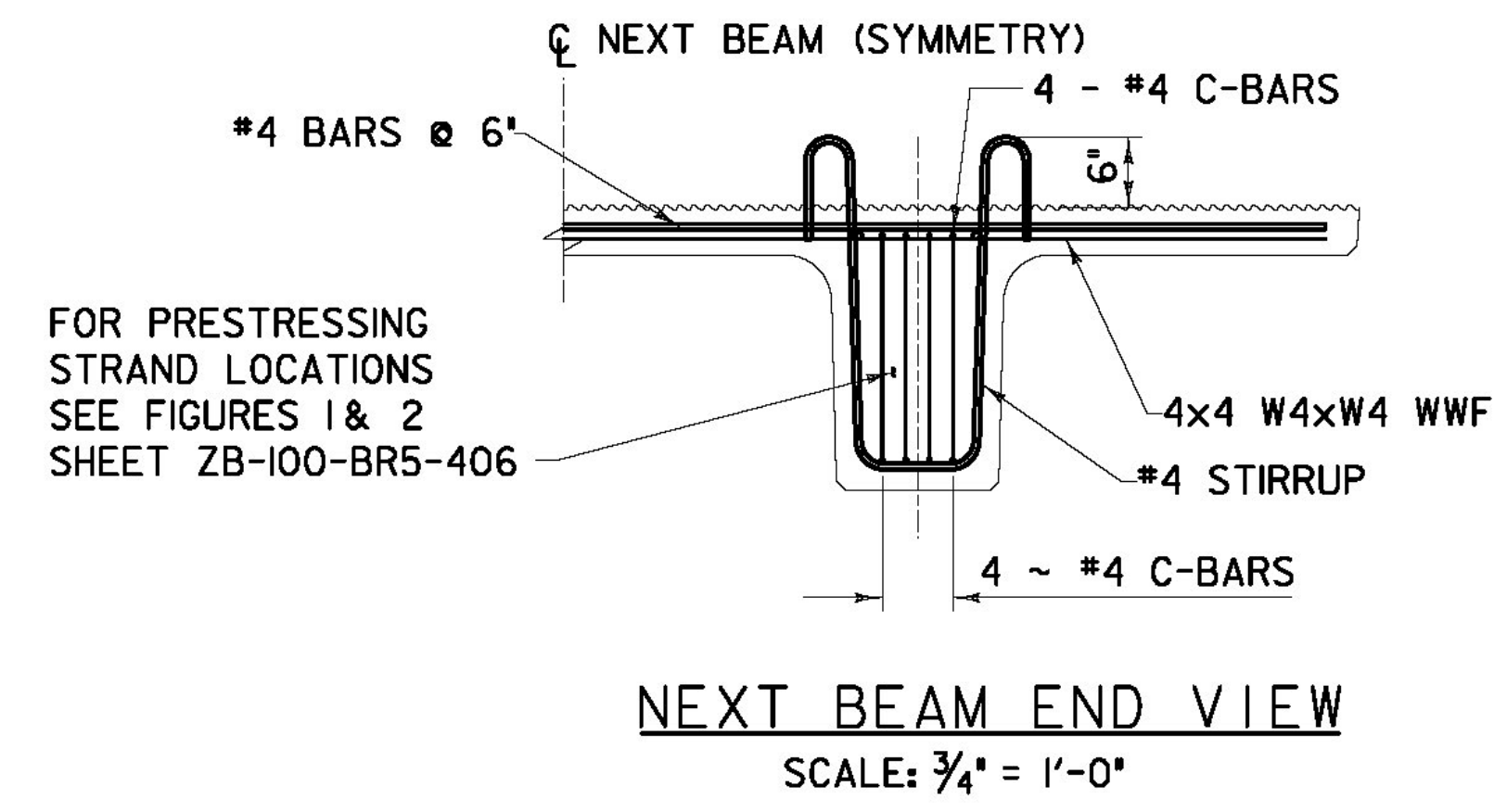
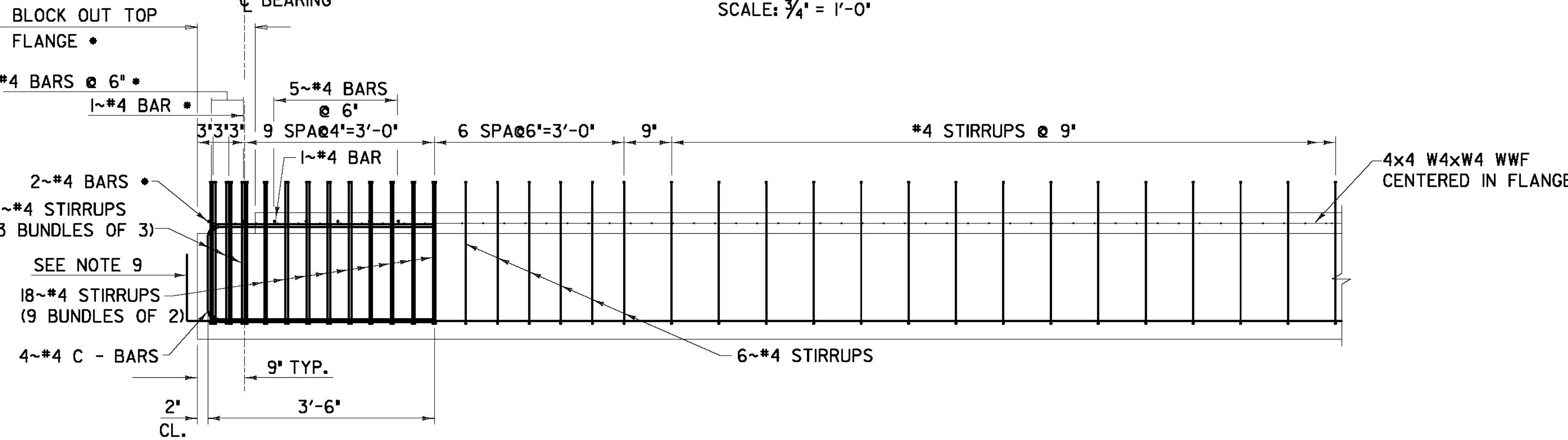
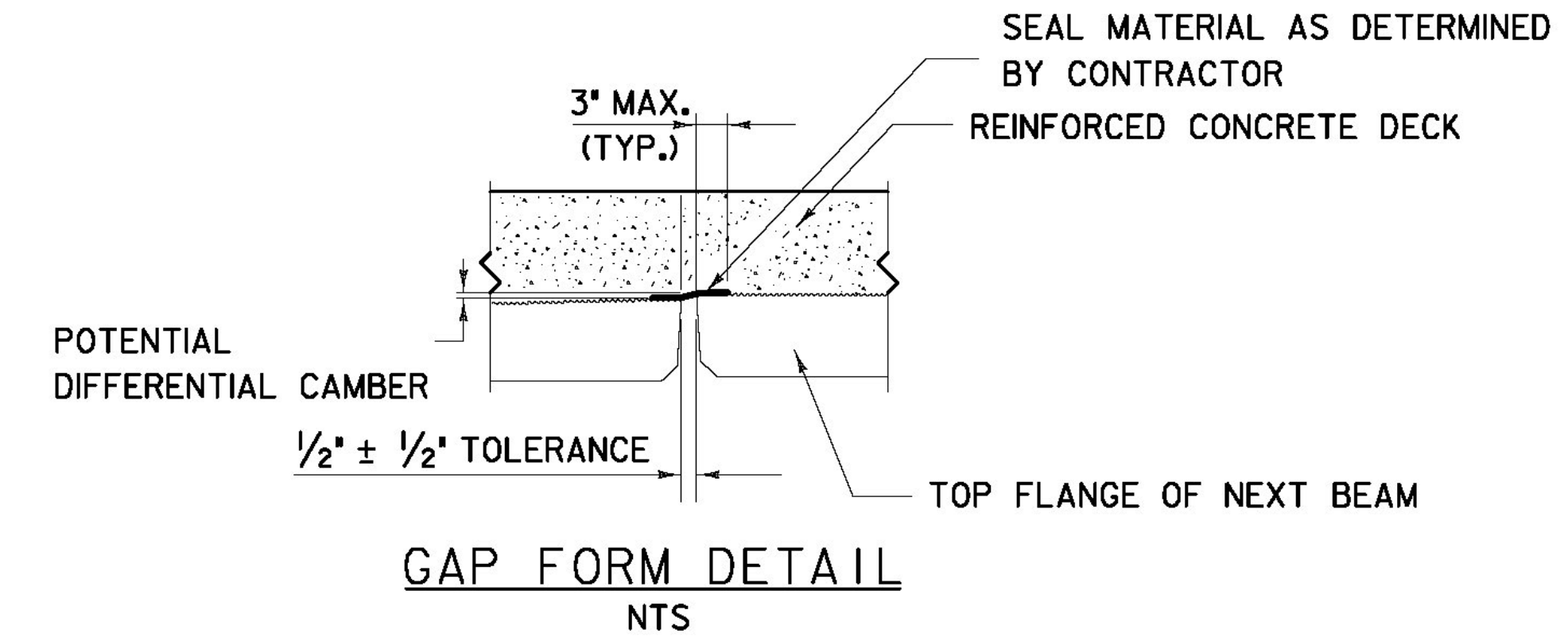
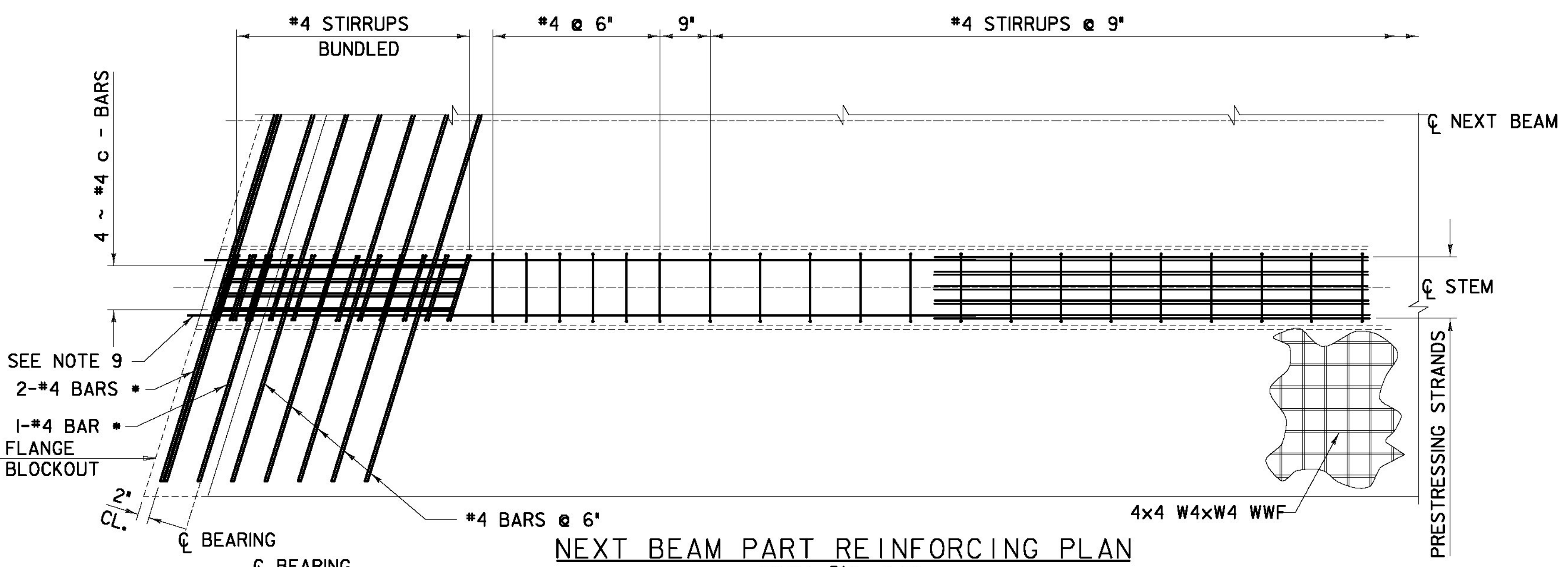


PRECAST CONC. SUPERSTRUCTURE NOTES

1. PRESTRESSING STRANDS TO BE 0.6-IN. DIAMETER.
2. THE TENSIONING FORCE FOR FULLY TENSIONED STRANDS IS 43.94 KIPS PER STRAND.
3. REINFORCING STEEL SHALL HAVE A MINIMUM CONCRETE COVER OF 2 INCHES UNLESS OTHERWISE NOTED.
4. THE TOP SURFACE OF THE PRESTRESSED BEAMS SHALL BE RAKED TO A SURFACE ROUGHNESS OF 1/4, EXCEPT AT LOCATIONS CORRESPONDING TO THE BLOCKING POINTS. AT THESE LOCATIONS A FLATTENED AREA OF SUFFICIENT SIZE SHALL BE FINISHED TO FACILITATE TAKING ELEVATIONS FOR SETTING BOTTOM OF SLAB ELEVATIONS.
5. THE DRILLING OF HOLES IN THE PRESTRESSED BEAMS AND THE USE OF POWER ACTUATED TOOLS ON THE BEAMS WILL NOT BE PERMITTED.
6. ALL REINFORCING EXTENDING INTO THE DECK SHALL BE EPOXY COATED.
7. THE ACUTE CORNERS OF THE FLANGE OVERHANGS SHOULD BE CHAMFERED 6\"/>
- 8. THE CONTRACTOR MAY USE ALTERNATE METHODS OF FORMING THE GAP BETWEEN THE BEAMS.



* FLANGE REINFORCEMENT IN AREA OF FLANGE BLOCKOUT TO BE PLACED DURING DECK CONSTRUCTION.

RFC PLANS - WORK PACKAGE #7
BRIDGE 5N
SEPTEMBER 21, 2011

PROJECT NAME: BRATTLEBORO	PLOT DATE: 9/21/2011
PROJECT NUMBER: IM 091-(K50)	DRAWN BY: J. Greene
FILE NAME: ZB-100-BR5-405.dgn	CHECKED BY: J. E. Krajewski
PROJECT LEADER: Brian W. Clogston P.E.	SHEET ZB-100-BR5-405
DESIGNED BY: Richard Bollinger P.E.	
NEXT BEAM PLAN AND ELEVATION	

**AS BUILT
RECORD PLANS**

BECK & BELLUCCI, INC. **TYLIN INTERNATIONAL**