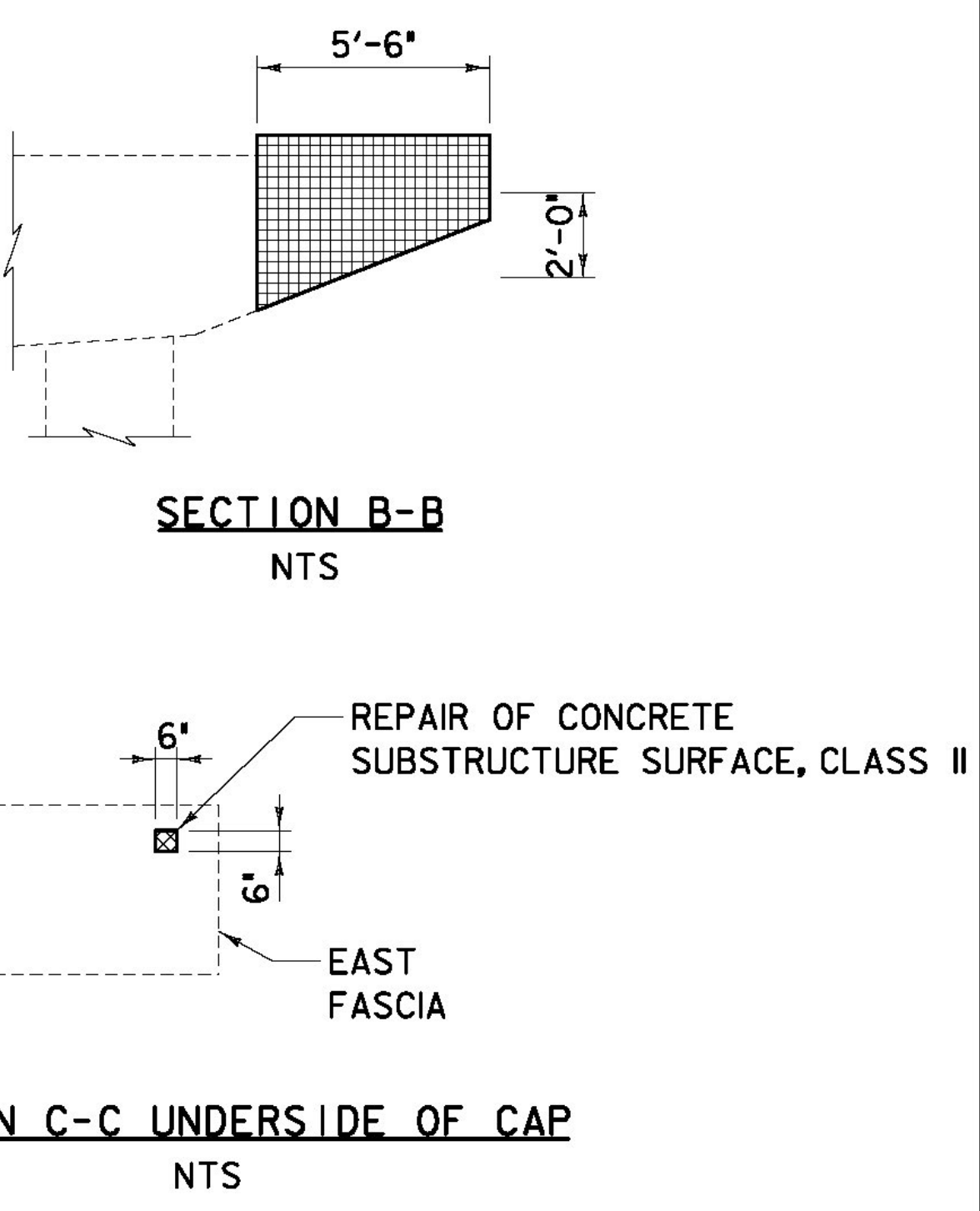
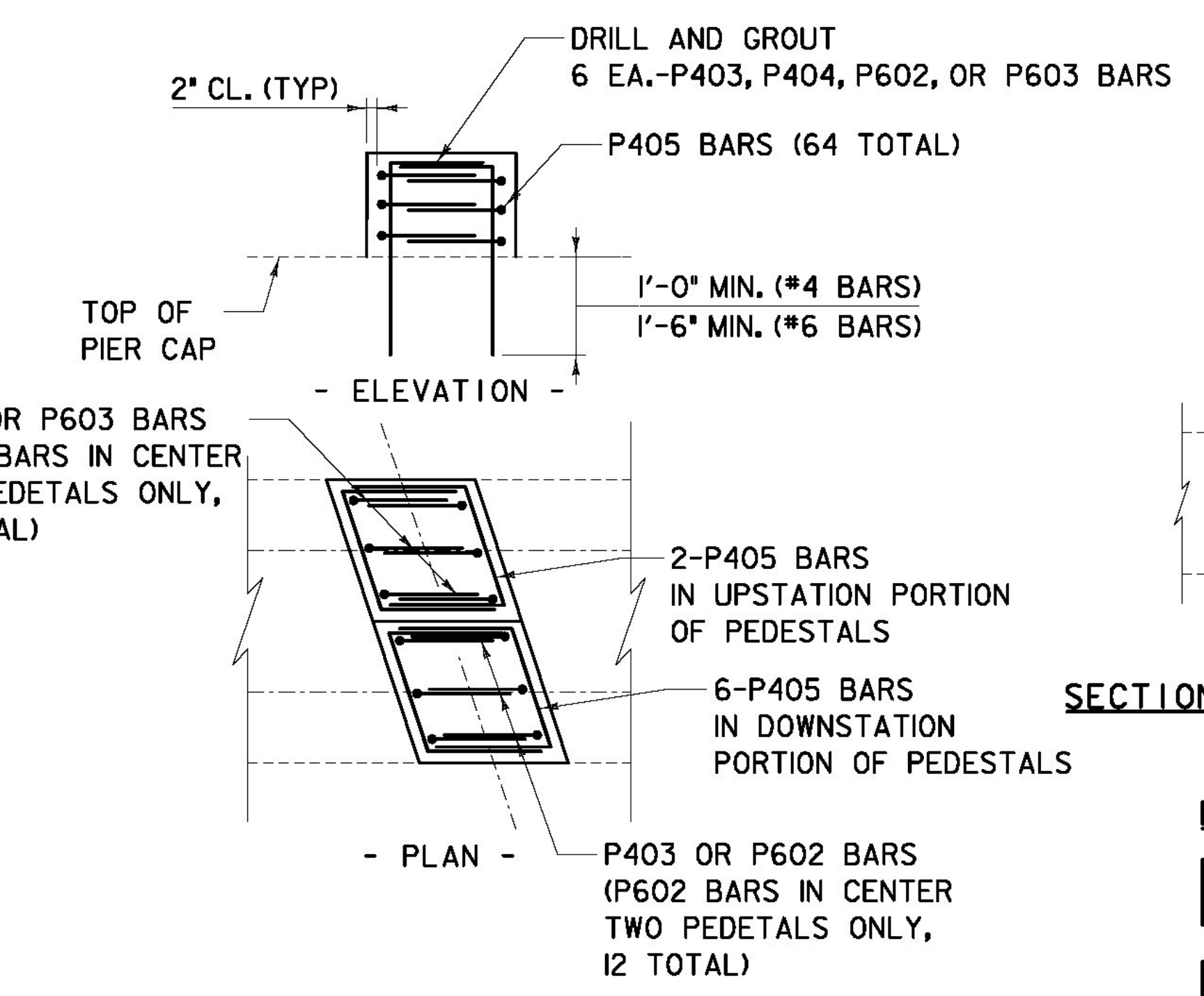
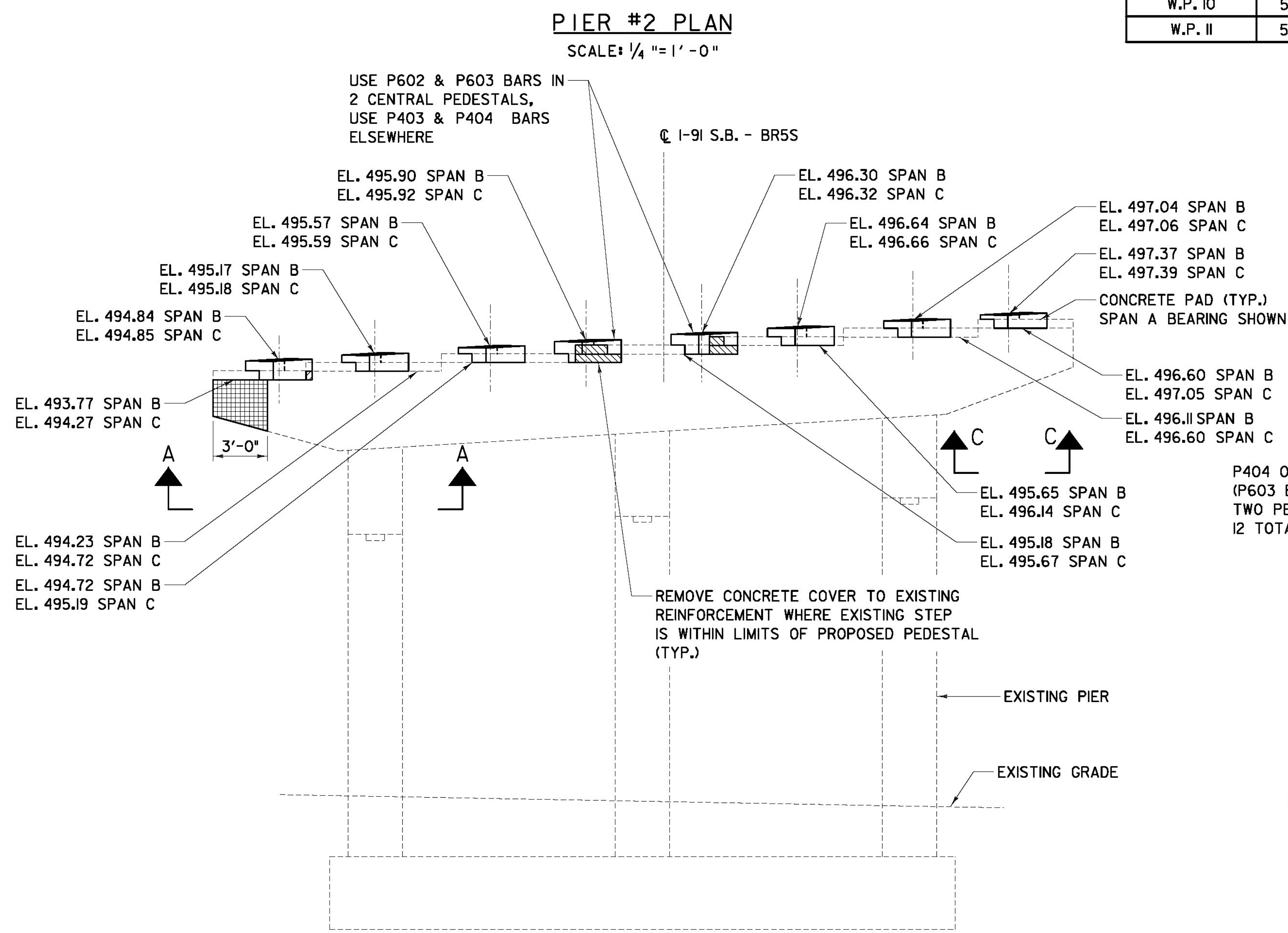
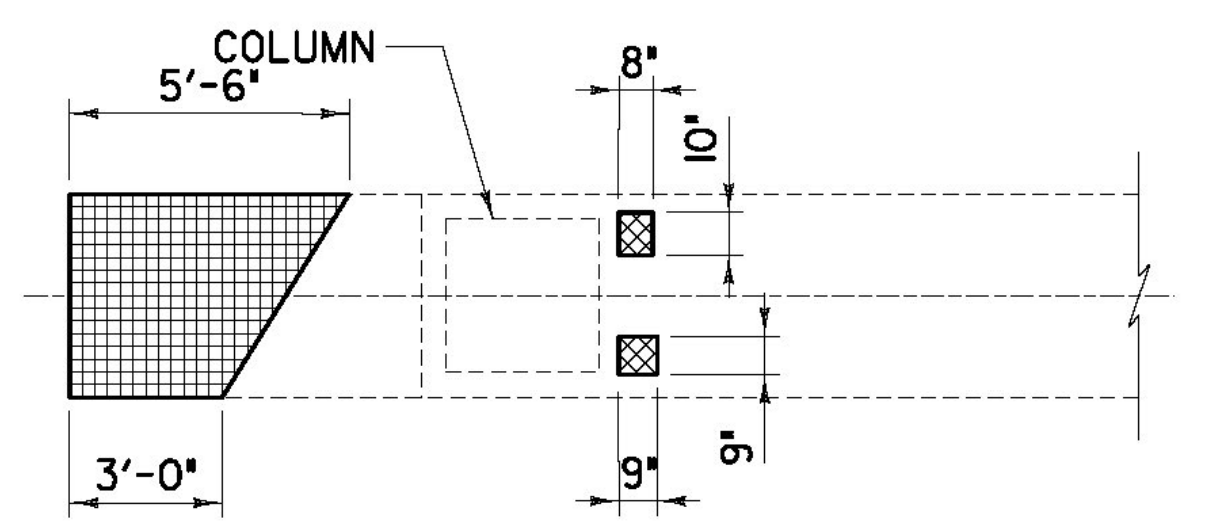


WORK POINT GEOMETRY				
WORK POINT #	STATION	OFFSET	N	E
W.P. 9	541+80.72	0.00'	125587.33	1620746.28
W.P. 10	541+89.33	20.91' LT.	125583.23	1620724.42
W.P. 11	541+73.86	19.13' RT.	125591.07	1620766.27

NOTE:

- SEE SHEET 'ZB-100-BR5-355' FOR NOTES.
- THE CONCRETE WITHIN THE WESTERN PORTION OF THE PIER CAP MARKED FOR 'REPAIR OF CONCRETE SUBSTRUCTURE SURFACE, CLASS III' SHALL BE REMOVED IN ITS ENTIRETY FROM THE WESTERN CAP FASCIA TO THE FULL DEPTH CRACK NEAR THE EASTERN LIMITS OF THE REPAIR AREA NOTED. THE REMOVED CONCRETE SHALL BE REPLACED WITH "CONCRETE, HIGH PERFORMANCE - CLASS B'". EXISTING REINFORCEMENT SHALL BE REUSED.



LEGEND:

- REPAIR OF CONCRETE SUBSTRUCTURE SURFACE, CLASS II
- REPAIR OF CONCRETE SUBSTRUCTURE SURFACE, CLASS III

PEDESTAL REINFORCEMENT DETAILS

SCALE: 1/2" = 1' - 0"

RFC PLANS - WORK PACKAGE #11
BRIDGE 5S
JANUARY 23, 2012

AS BUILT RECORD PLANS

BECK & BELLUCCI, INC. TYLIN INTERNATIONAL

PROJECT NAME: BRATTLEBORO
PROJECT NUMBER: IM 091-(150)
FILE NAME: ZB-100-BR5-356.dgn
PROJECT LEADER: Phillip E. Kendall P.E.
DESIGNED BY: Josh Olund P.E.
BR5S PIER #2 PLAN & ELEVATION
PLOT DATE: 1/23/2012
DRAWN BY: S. A. Morgan
CHECKED BY: D. Myers
SHEET ZB-100-BR5-356