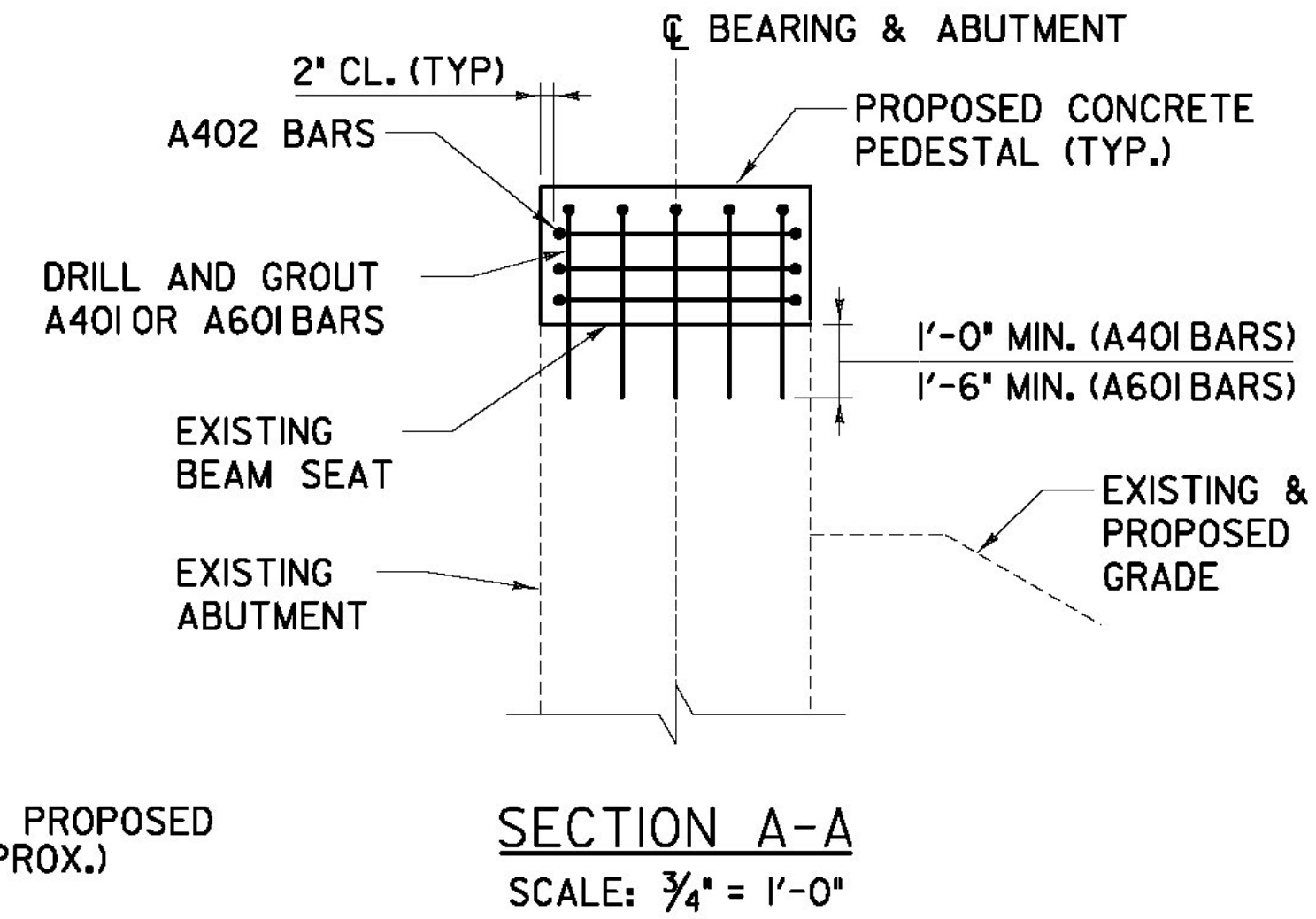
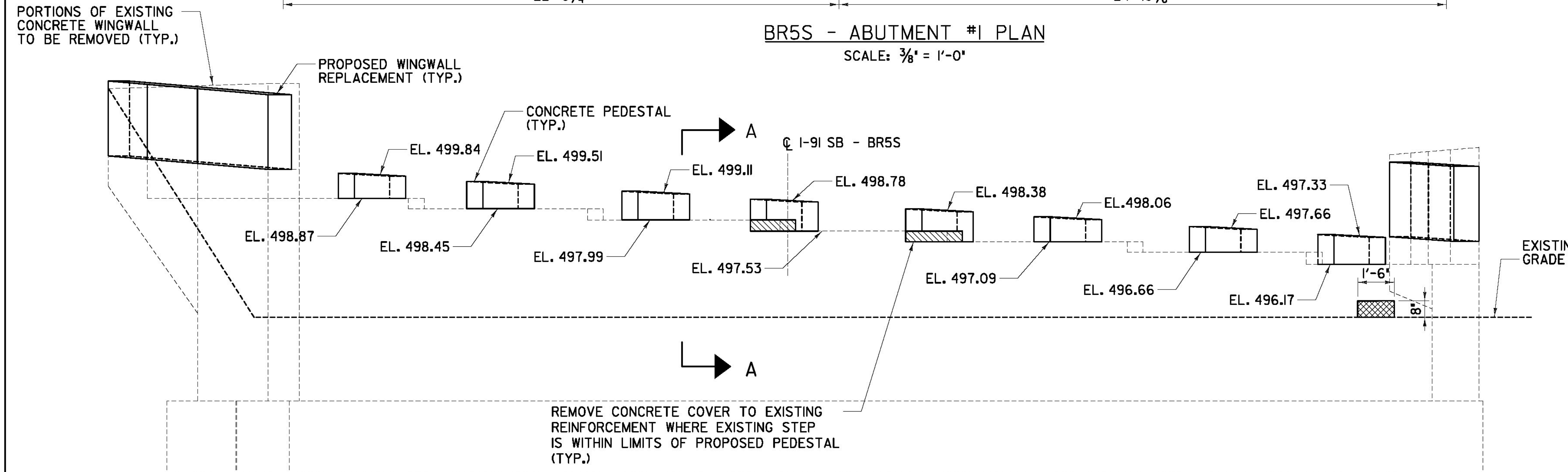


WORK POINT GEOMETRY				
WORK POINT #	STATION	OFFSET	N	E
W.P. 1	540+88.97	0.00'	125507.50	1620791.51
W.P. 2	540+82.00	21.66' RT.	125511.70	1620813.89
W.P. 3	540+61.31	21.67' RT.	125493.35	1620823.76
W.P. 4	540+97.68	23.65' LT.	125502.91	1620767.07
W.P. 5	540+89.11	23.65' LT.	125496.31	1620770.69

- NOTES:**
- EXISTING ABUTMENT SEATS SHALL REMAIN. CONCRETE PEDESTALS SHALL BE CAST TO PROVIDE ADEQUATE BEARING AND APPROPRIATE ELEVATIONS FOR PROPOSED SUPERSTRUCTURE. CONCRETE PEDESTALS LESS THAN 2' THICK SHALL BE REPLACED BY A STEEL PLATE GALVANIZED IN ACCORDANCE WITH AASHTO M311 (ASTM A123).
  - THE CONTRACTOR SHALL ENSURE THAT THE REMOVAL PROCESS IS UNDERTAKEN IN SUCH A MANNER AS TO PROHIBIT DAMAGE TO ANY PORTION OF THE EXISTING STRUCTURE THAT IS TO REMAIN. IF DAMAGE TO THE REMAINING STRUCTURE DOES OCCUR, ALL NECESSARY REPAIRS AS DETERMINED BY THE ENGINEER SHALL BE MADE AT NO EXPENSE TO THE OWNER.
  - CONCRETE PEDESTALS SHALL BE CAST WITH HIGH PERFORMANCE CONCRETE, CLASS AA LOW CEMENT WITH 3/8" MAXIMUM AGGREGATE.
  - CONCRETE REPAIR SHALL BE IN ACCORDANCE WITH VTRANS STD. 580 - STRUCTURAL CONCRETE REPAIR. CONCRETE SHALL BE EITHER 'CONCRETE, HIGH PERFORMANCE CLASS AA, LOW CEMENT' OR MEET THE REQUIREMENTS OF STANDARD SPECIFICATION 780.02, 'OVERHEAD AND VERTICAL CONCRETE REPAIR MATERIAL' AND BE INSTALLED IN STRICT CONFORMANCE WITH THE MANUFACTURERS RECOMMENDATIONS. MINIMUM CONCRETE COVER TO EXISTING REINFORCEMENT STIRRUPS SHALL BE 1/2".
  - DIMENSIONS WITH RESPECT TO THE EXISTING STRUCTURE ARE APPROXIMATE. THE ENGINEER SHALL BE NOTIFIED IF DIMENSIONS, ELEVATIONS, OR LOCATIONS ARE FOUND TO DIFFER FROM THOSE SHOWN HEREIN BY MORE THAN 1".
  - PEDESTAL ELEVATIONS PROVIDED ARE ALONG THE CENTERLINE OF EACH GIRDER STEM.



- LEGEND:**
- REPAIR OF CONCRETE SUBSTRUCTURE SURFACE, CLASS I
  - REPAIR OF CONCRETE SUBSTRUCTURE SURFACE, CLASS II

RFC PLANS - WORK PACKAGE #11  
BRIDGE 55  
JANUARY 23, 2012

PROJECT NAME: BRATTLEBORO	PLOT DATE: 1/23/2012
PROJECT NUMBER: IM 091-(K50)	DRAWN BY: S. A. Morgan
FILE NAME: ZB-100-BR5-351.dgn	CHECKED BY: Daniel Myers
PROJECT LEADER: Phillip E. Kendall P.E.	SHEET ZB-100-BR5-351
DESIGNED BY: Josh Olund P.E.	

**AS BUILT  
RECORD PLANS**

**BECK & BELLUCCI, INC. TYLIN INTERNATIONAL**

EXISTING ABUTMENT PILES  
NOT SHOWN FOR CLARITY.