

NOTES:

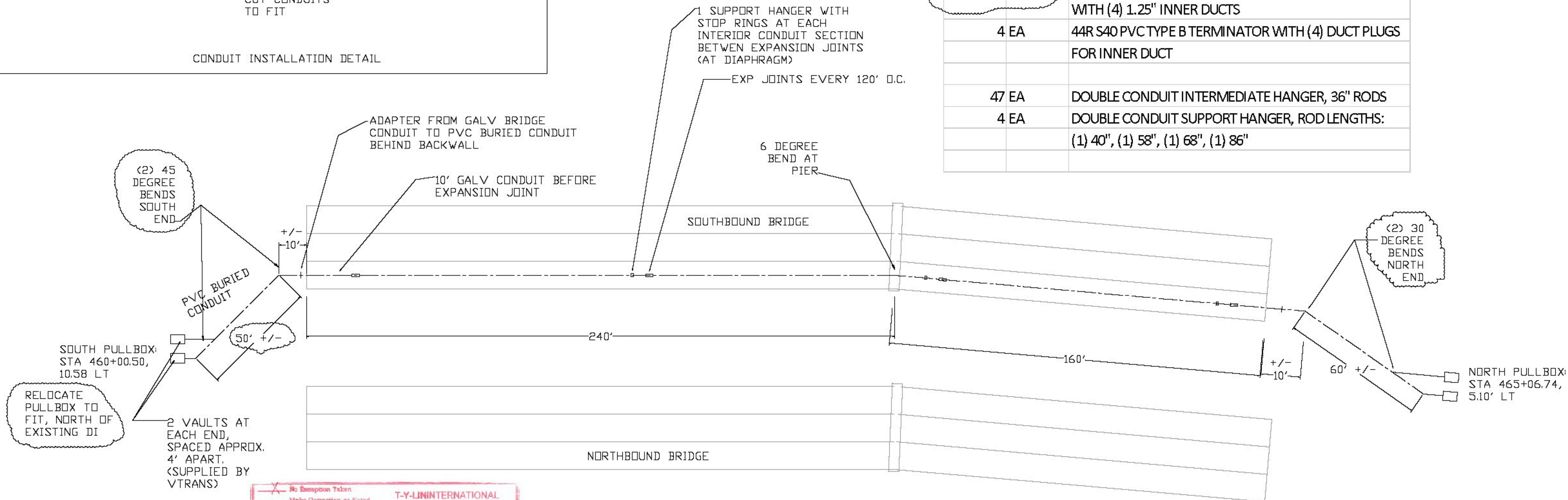
MAX 170 DEGREES OF TOTAL BEND IS ALLOWED. 156 DEGREES IS SHOWN IN THIS DRAWING.

QA IS TO PROVIDE A VISUAL INSPECTION OF THE CONDUIT DURING INSTALLATION.

PULLBOX LAYOUT SHOWN IS SCHEMATIC. INSTALL PULLBOXES AT LOCATIONS AND OFFSETS AS DIRECTED IN THE FIELD.

AT GEFOAM FILL, CUT HOLES IN FOAM TO ACCEPT CONDUITS. FILL VOIDS WITH PEASTONE.

BILL OF MATERIALS		
QTY	UNITS	DESCRIPTION
800	LF	OPTI-COM 44R GALVANIZED MULTI-DUCT CONDUIT, 10' LENGTHS, WITH (4) 1.25" INNER DUCTS
8	EA	44R RIGID GALVANIZED EXPANSION JOINT, 4" TRAVEL WITH GROUNDING JUMPER
2	EA	44R RIGID GALVANIZED BEND, 6 DEGREE, 48" RADIUS, (4) 1.25" INNER DUCTS
12	EA	SPLIT STOP RINGS AT SUPPORT HANGERS
4	EA	OC44R S40 PVC TO OC44R RIGID STEEL ADAPTER
400	LF	44R S40 PVC MULTI-DUCT CONDUIT, 20' LENGTHS, (4) 1.25" INNER DUCTS
4	EA	44R S40 PVC MULTI-DUCT CONDUIT, 30-DEG BEND, WITH (4) 1.25" INNER DUCTS
4	EA	44R S40 PVC MULTI-DUCT CONDUIT, 45-DEG BEND, WITH (4) 1.25" INNER DUCTS
4	EA	44R S40 PVC TYPE B TERMINATOR WITH (4) DUCT PLUGS FOR INNER DUCT
47	EA	DOUBLE CONDUIT INTERMEDIATE HANGER, 36" RODS
4	EA	DOUBLE CONDUIT SUPPORT HANGER, ROD LENGTHS: (1) 40", (1) 58", (1) 68", (1) 86"



T-Y-LIN INTERNATIONAL

No Exception Taken
 Make Correction as Noted
 Submit Specified Item
 Revise and Resubmit as Noted
 Rejected

Checking is for general compliance with the design concept of the project and general compliance with the information given in the contract documents only. Any action shown on a specific item shall not indicate the checking of an assembly of which the item is a component. Contractor is solely responsible for: dimensions which shall be confirmed and correlated at the job site, fabrication processes, techniques of construction, safety precautions, and coordination of its work with that of all other trades and the satisfactory performance of its work.

Reviewed By: *Jd* Date: May 30, 2012

BRATTLEBORO VT
GALVANIZED BRIDGE CONDUIT

REV:
4-18-12: 4
PULLBOXES
5-30-12: 45-DEG AT
SOUTH END

TITLE: CONDUIT PLAN VIEW	
PROJECT: BRATTLEBORO, VT IM 091-1 (50)	
SCALE: 1" = XX'	DATE: FEB 28, 2012
BECK & BELLUCCI, INC. FRANKLIN, NEW HAMPSHIRE	