

BILL OF MATERIAL				JOB NO.	ENGINE NO.	REV.	
ROW INFO	SHOP	QTY	MATERIAL	479	219	▲	
PAGE	LINE	MARK	QTY	MARK	REMARKS	WT	PROCUREMENT NOTES
		219G3E	1	GIRDER		26345	
203	S		1	wa	PL 5/8x93	36	11 5/8
203	U		1	wh	PL 5/8x78 1/2	53	0
202	J		1	lw	PL 1x15 1/2	14	11 7/8
203	E		1	hb	PL 3/4x15 1/2	74	10 3/8
202	J		1	hw	PL 1x15 1/2	14	11 7/8
203	C		1	bb	PL 1x15 1/2	75	0 1/8
208	D		2	x204n	PL 1x7 1/4	4	10
208	M		2	x204v	PL 1x7 1/4	4	9 1/4
208	J		1	x205aa	PL 2x7	5	11
208	K		1	x205ab	PL 2x7	5	4
208	R		1	x205ag	PL 2x7	7	4 1/2
208	T		1	x205am	PL 2x7	6	9 1/2
208	V		1	x205ap	PL 2x7	6	2 1/2
208	M		1	x205at	PL 2x7	5	7 1/2
208	F		1	x205b	PL 2x7	7	9 1/2
208	G		1	x205d	PL 2x7	7	1 1/2
208	H		1	x205g	PL 2x7	6	5 1/2
208	J		1	x205k	PL 2x7	5	11
208	K		1	x205m	PL 2x7	5	4
208	F		1	x205p	PL 2x7	7	8 1/2
208	G		1	x205v	PL 2x7	7	1 1/2
208	H		1	x205y	PL 2x7	6	8 1/2
208	Y		1	x205ca	PL 2x7	5	1

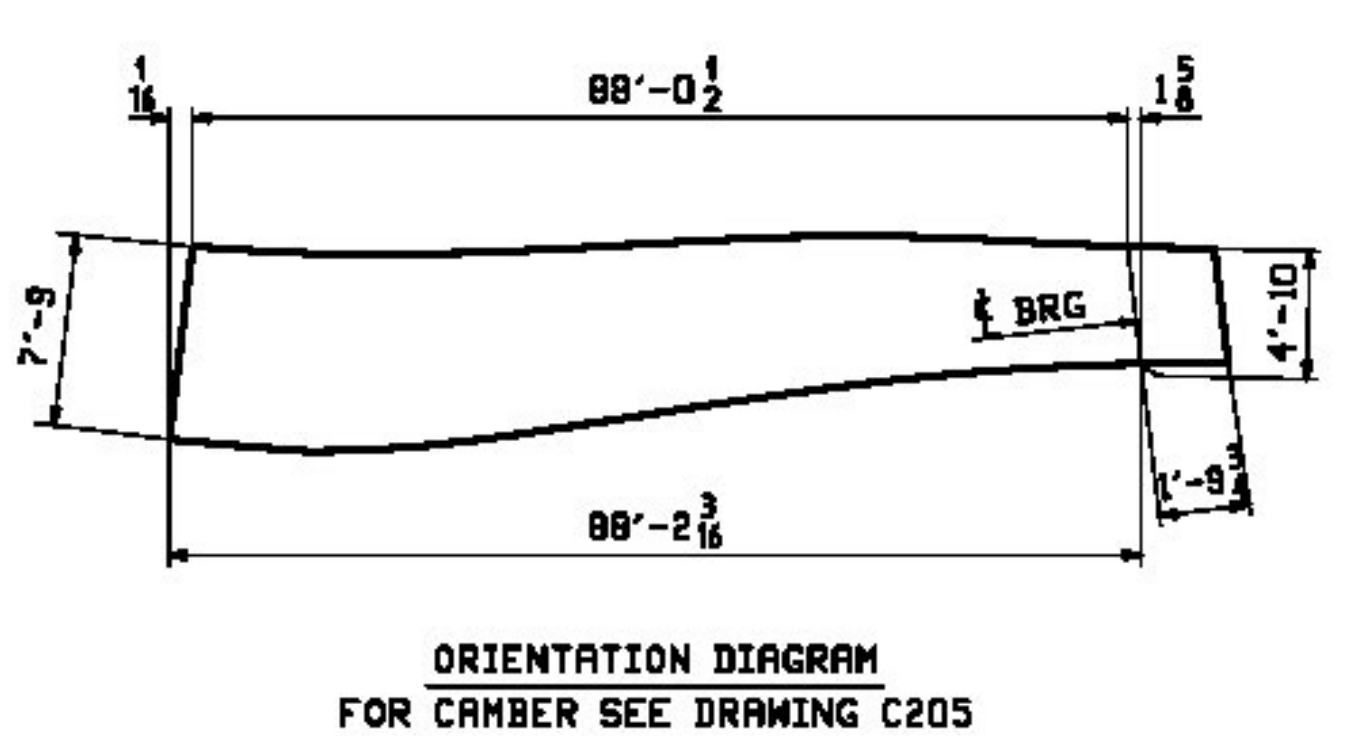
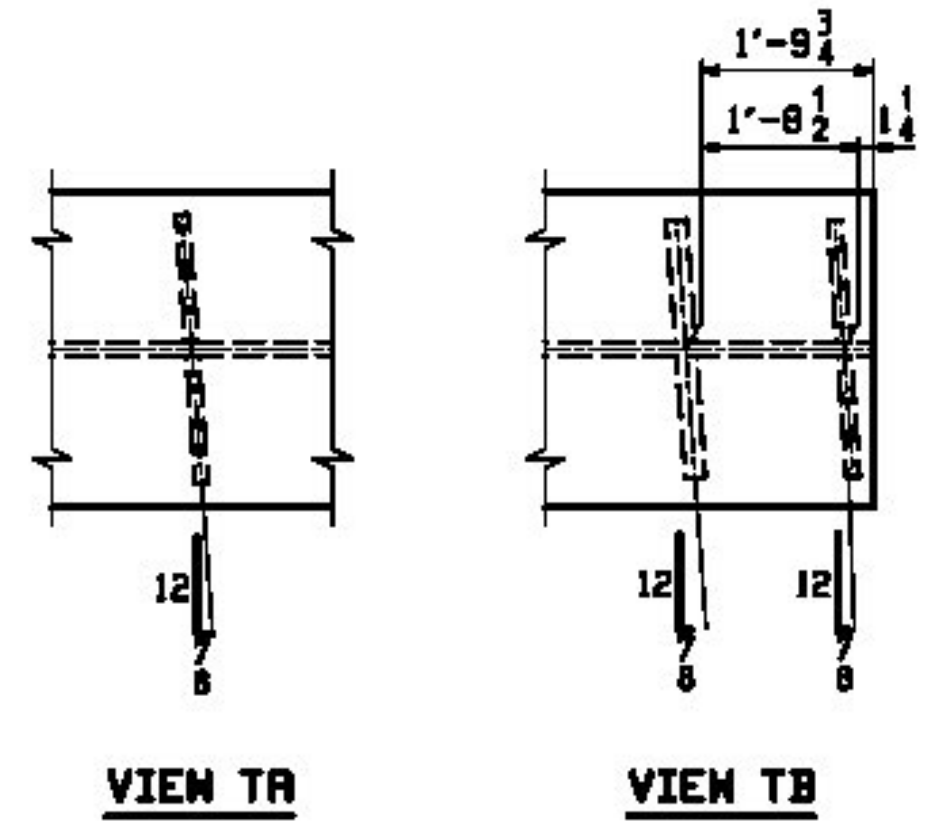
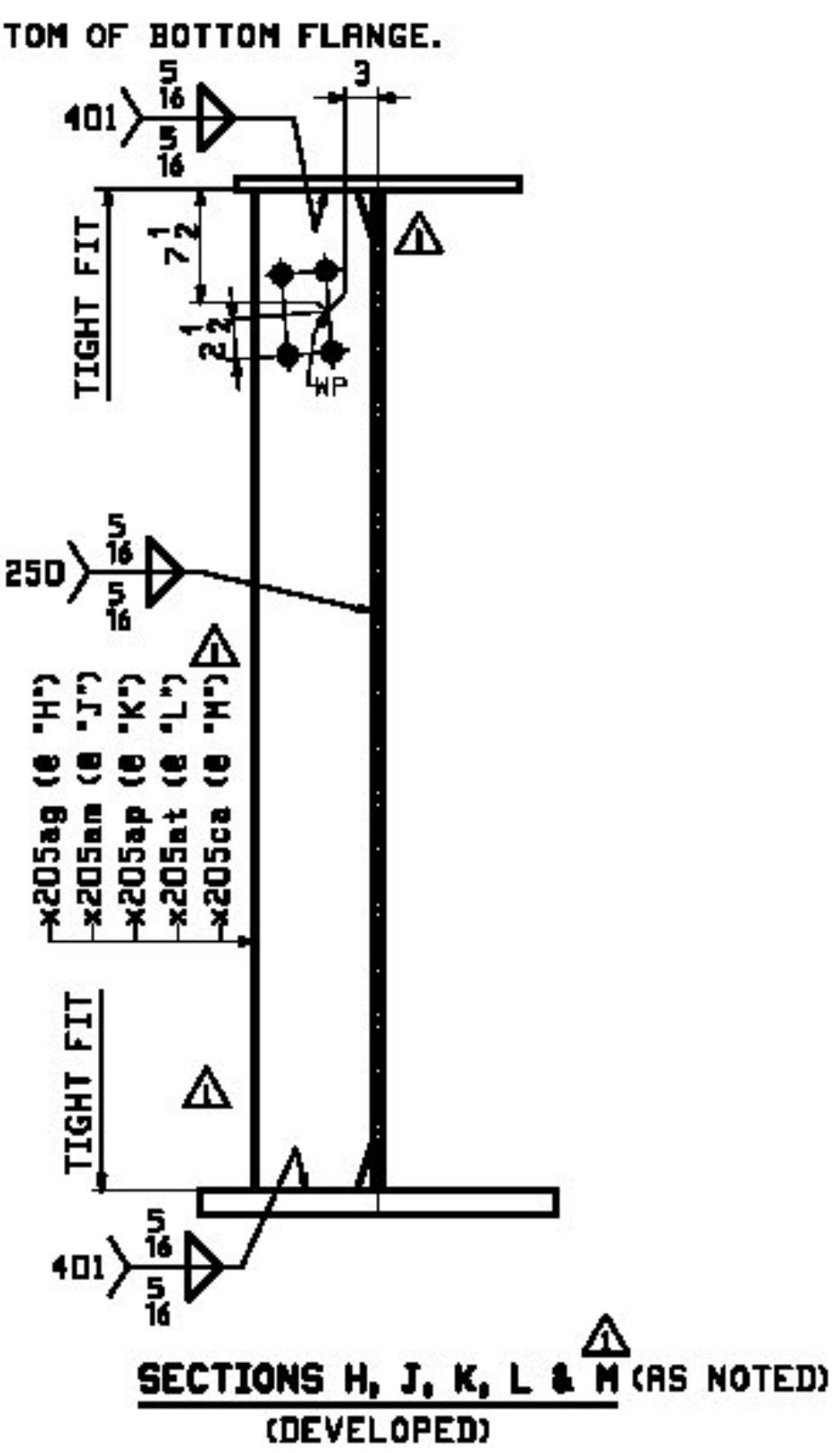
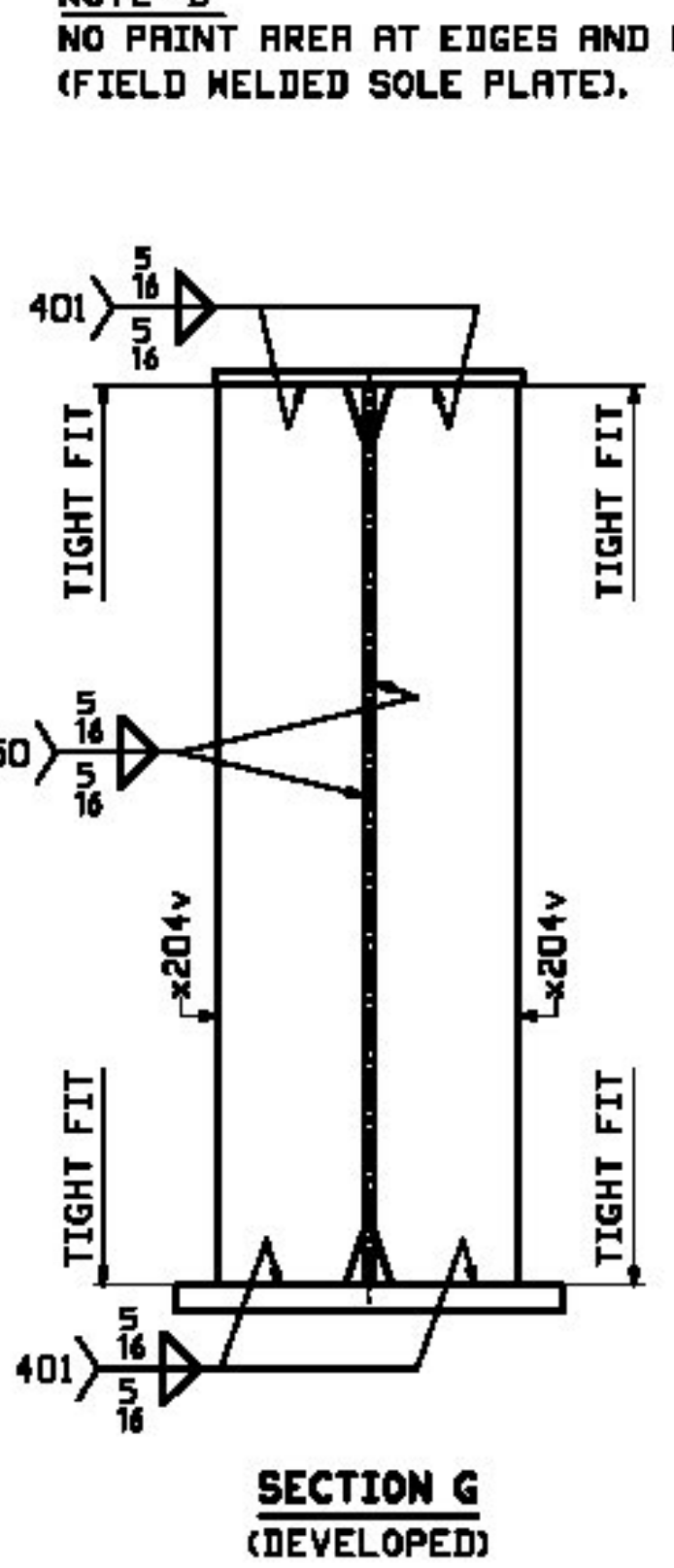
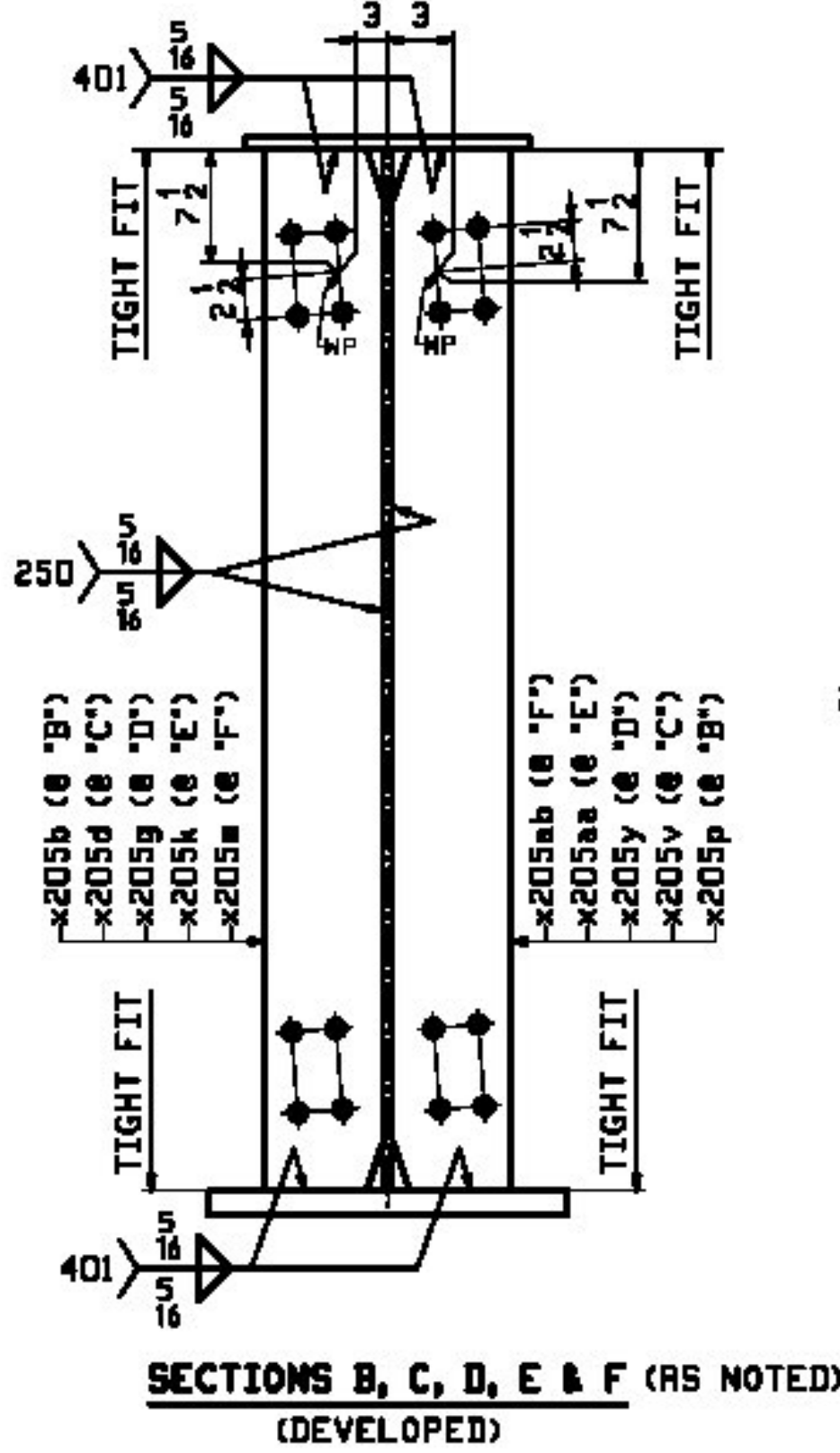
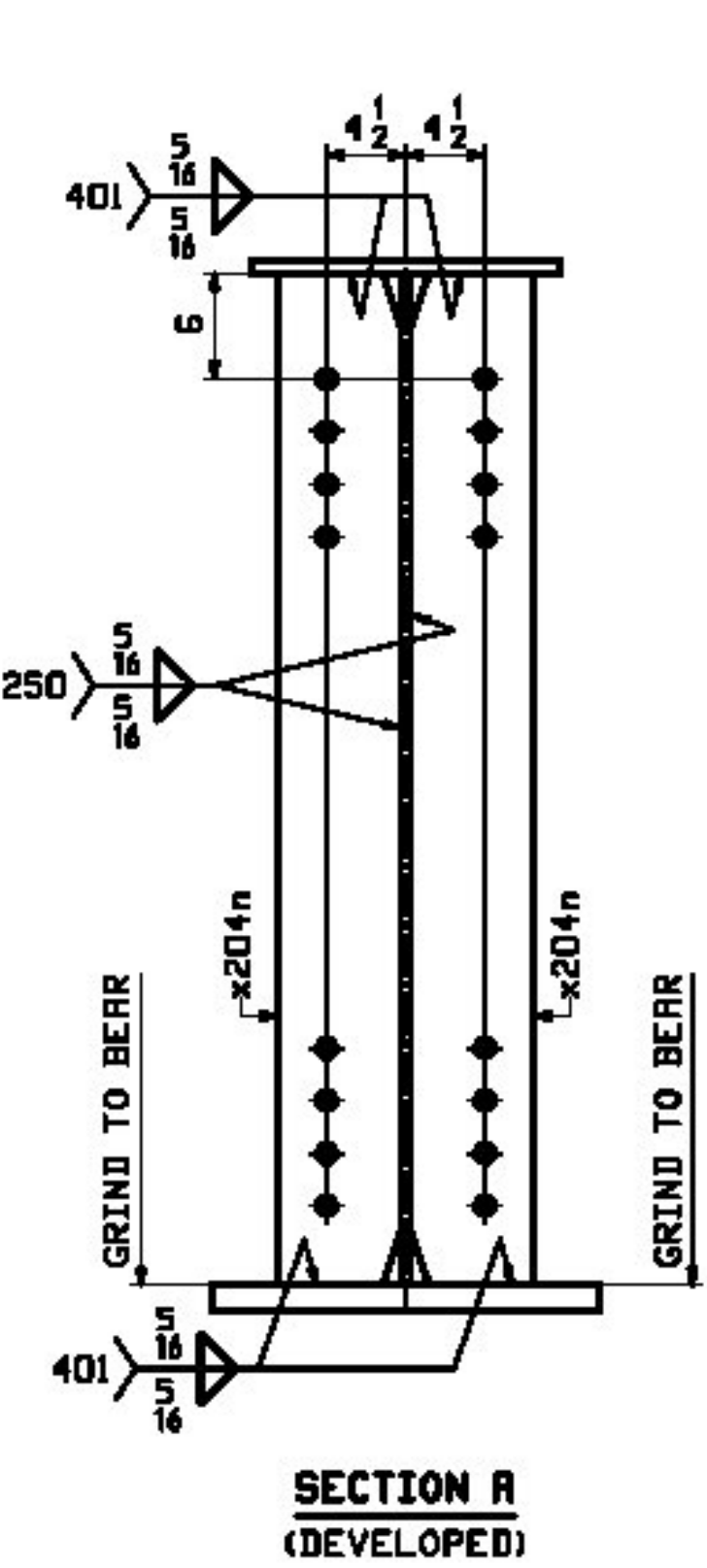
X No Exception Taken  
 — Make Correction as Noted  
 — Submit Specified Item  
 — Revise and Resubmit as Noted  
 — Rejected

T-Y-J INTERNATIONAL  
 Checked for general compliance with the design concept of the project and general compliance with the information given in the contract documents only. Any action shown is not an approval and is subject to the requirements of the plans and specifications. Any action shown on a specific item shall not indicate the checking of an assembly of which the item is a component. Contractor is solely responsible for: dimensions which shall be confirmed and correlated at the job site, fabrication processes, techniques of construction, safety precautions, and coordination of its work with that of all other trades and the satisfactory performance of its work.  
 Reviewed By: *[Signature]* Date: May 29, 2012

**ONE - GIRDER - 219G3E**

FOR FIELD SPlice STANDARD DETAILS SEE DRAWING X203.  
 FOR GIRDER STANDARD DETAILS SEE DRAWINGS X204 & X205.  
 FOR CAMBER & FLANGE DIAGRAMS SEE DRAWING C205.  
 FOR WEB ELEVATION DIAGRAM SEE DRAWING W201.  
 FOR GENERAL NOTES SEE DRAWING GNI.  
 T2 DENOTES MATERIAL SUBJECT TO CHARPY V-NOTCH TESTING.

**NOTE "B"**  
 NO PRINT AREA AT EDGES AND BOTTOM OF BOTTOM FLANGE.  
 (FIELD WELDED SOLE PLATE).



REV.	DATE	REMARKS	DMN	CHK	APVL	SHOP
5/10		REV. DYNAMIC W/DIFF'S (SEC'S F THRU N)	JTB	TJB		
0		ADD STIFF & SECT "M" (EXTRA-TEC-3054001)				
MATERIAL:		SURFACE PREP. & PAINT:	HOLES:		SHOP BOLTS:	
M270-S0W (UN)		SEE DWG GNI	15 1/8" φ		NONE	
DESCRIPTION: GIRDER - 219G3E						
CASCO BAY STEEL STRUCTURES, INC.						
1 WALLACE AVE.			PHONE (207) 780-6722		DRAWN: JTB	
SOUTH PORTLAND, ME 04106			FAX: (207) 780-6726		DATE: 07/11	
STRUCTURE: I-91 BRIDGE 6S OVER WHITESTONE			COUNTY OF MINDHAM		CHKD: TJB	
LOCATION: Town of Brettleboro, VT.			JOB NO. 479		DATE: 07/23	
PROJ NO. IM 091-1(SD)			DWG NO. 219		REV. ▲	
CUSTOMER: BECK & BELLUCCI						