

JOB NO.		DRAWING NO.		REV.			
479		204		△			
ROW INFO	SHOP	QTY	MATERIAL	LENGTH	REMARKS	MT	PROCUREMENT NOTES
				FT			
	204G4R	1	GIRDER			270S	
203	G	1	wa	PL 5/8x93	71	10 5/8	M270-S0W
204	Q	1	tw	PL 3/4x15 1/2	36	10 5/8	M270-S0W
204	L	1	tb	PL 1/2x15 1/2	20	D	M270-S0W
204	C	1	tc	PL 2x15 1/2	14	11 7/8	M270-S0W
203	A	1	ta	PL 1x18	21	7 1/2	M270-S0W
202	M	1	bb	PL 1 1/2x18	15	D	M270-S0W
201	S	1	bc	PL 2x18	34	11 7/8	M270-S0W
208	C	1	x204a	PL 1x7 1/2	6	2 1/2	M270-S0W
208	C	1	x204d	PL 1x7 1/2	6	2 1/2	M270-S0W
208	L	1	x204p	PL 1/2x7	6	1 1/2	M270-S0W
208	L	1	x204t	PL 1/2x7	6	1 1/2	M270-S0W
208	Q	3	x205av	PL 1/2x7 1/2	7	9	M270-S0W
208	S	1	x205ay	PL 1/2x7 1/2	7	2 1/2	M270-S0W
208	U	1	x205bb	PL 1/2x7 1/2	6	6 1/2	M270-S0W
208	E	2	x205n	PL 1/2x7 1/2	7	9	M270-S0W
208	F	1	x205t	PL 1/2x7 1/2	7	9	M270-S0W
208	G	1	x205w	PL 1/2x7 1/2	6	10 5/8	M270-S0W

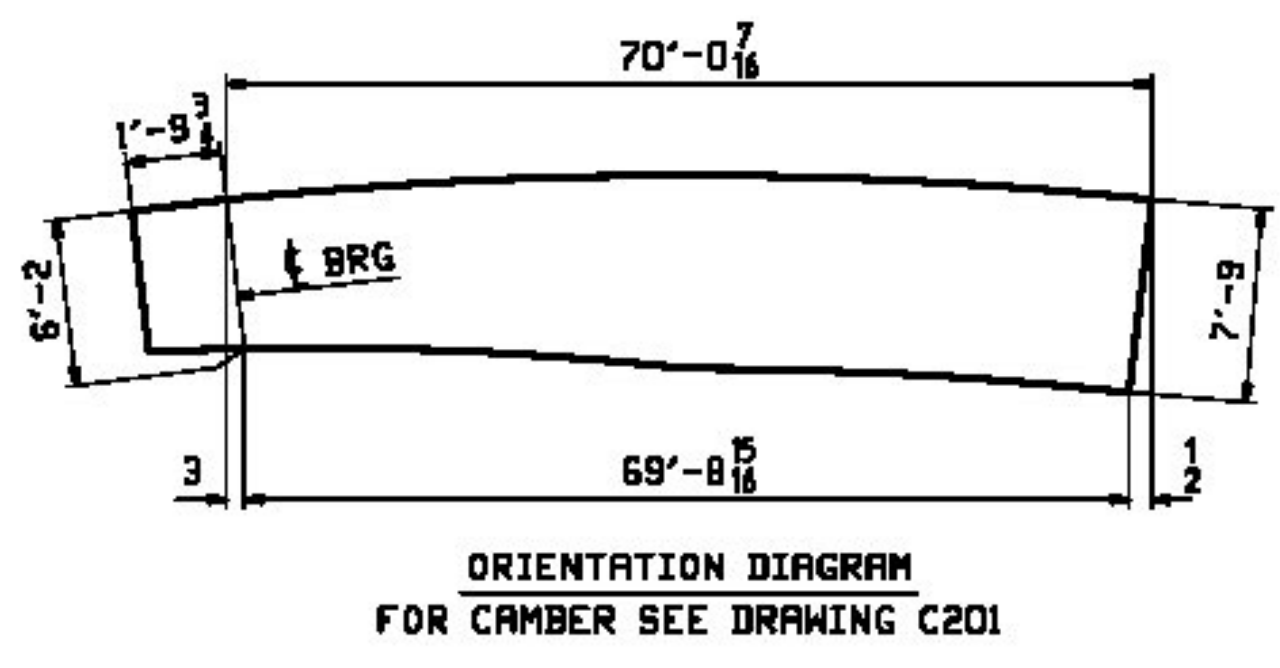
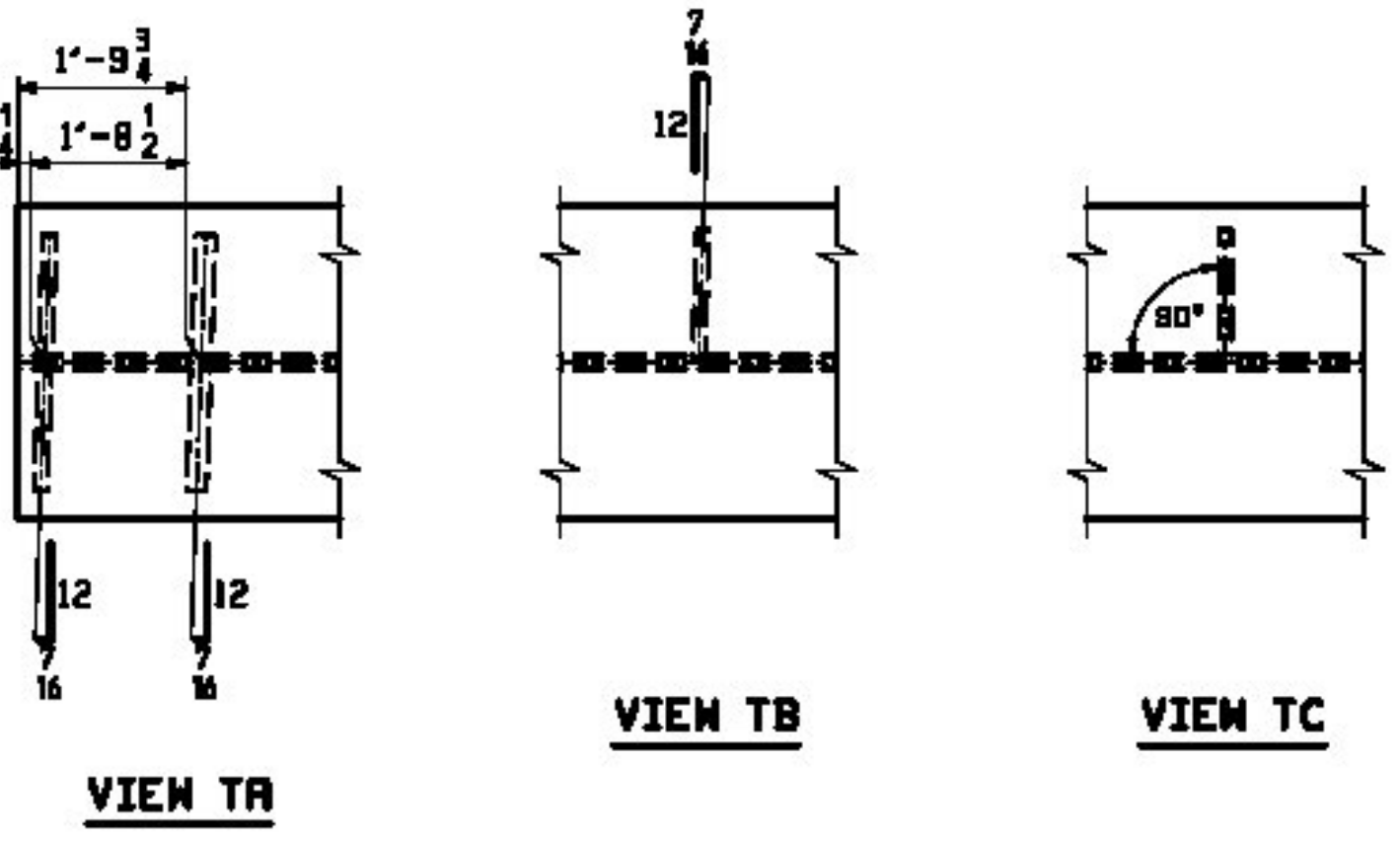
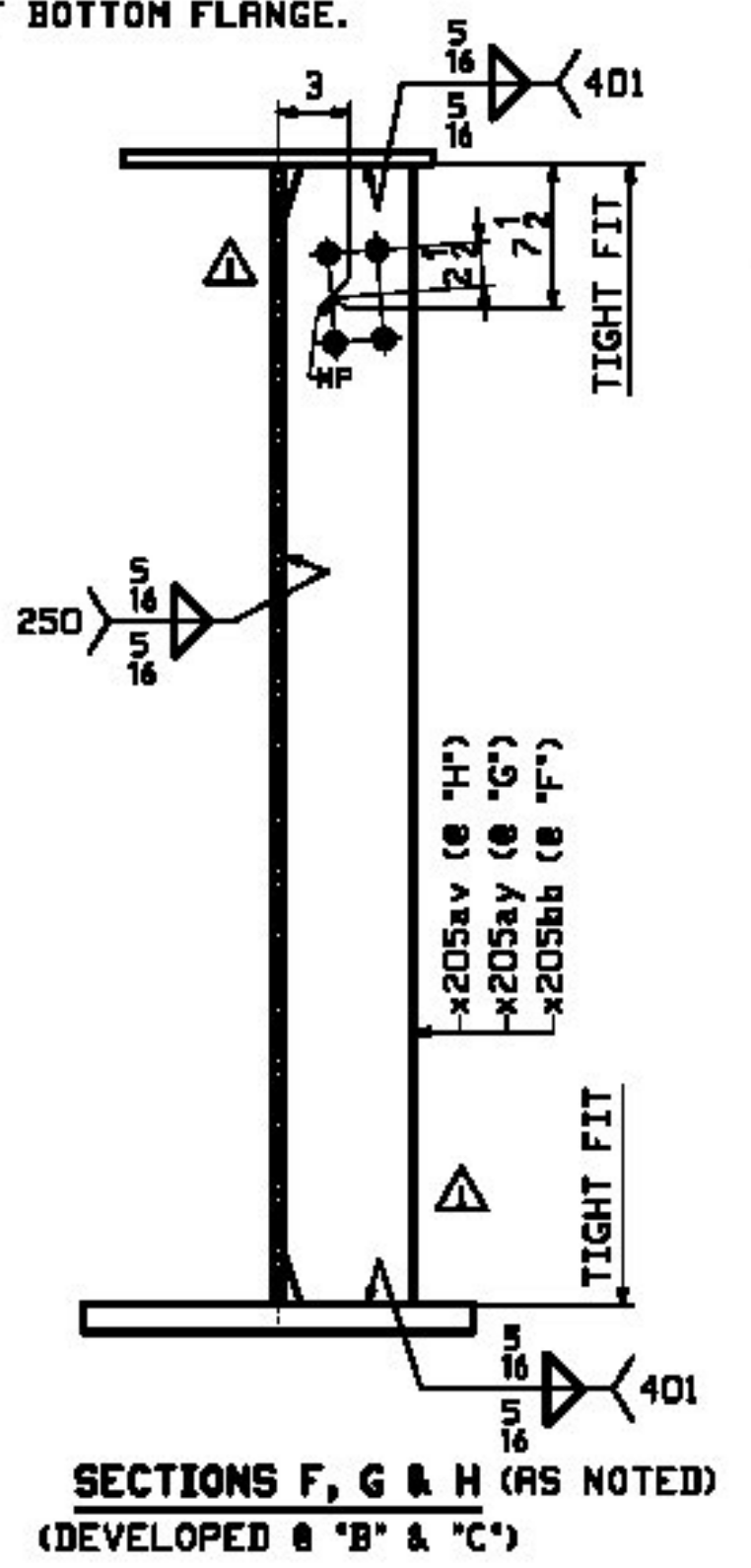
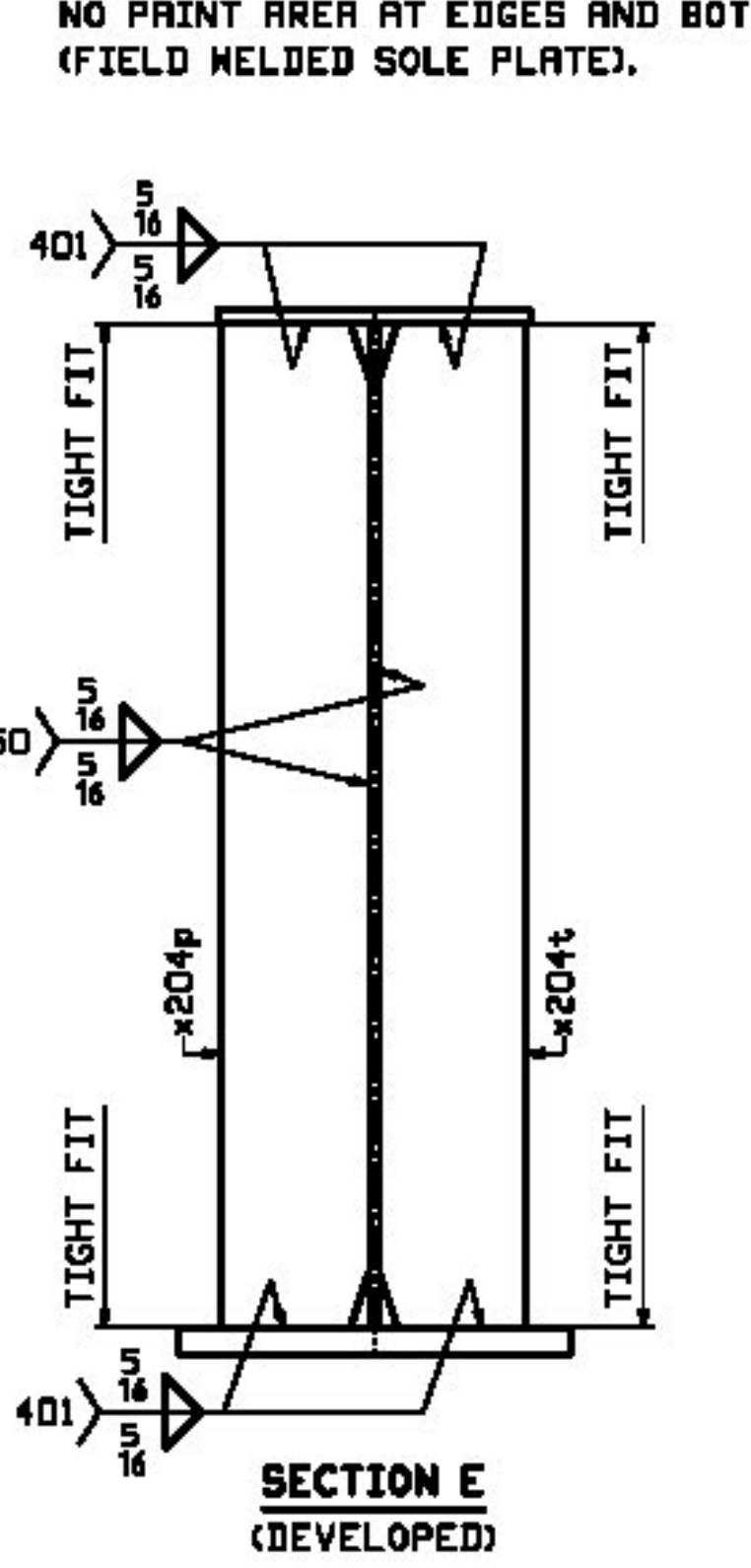
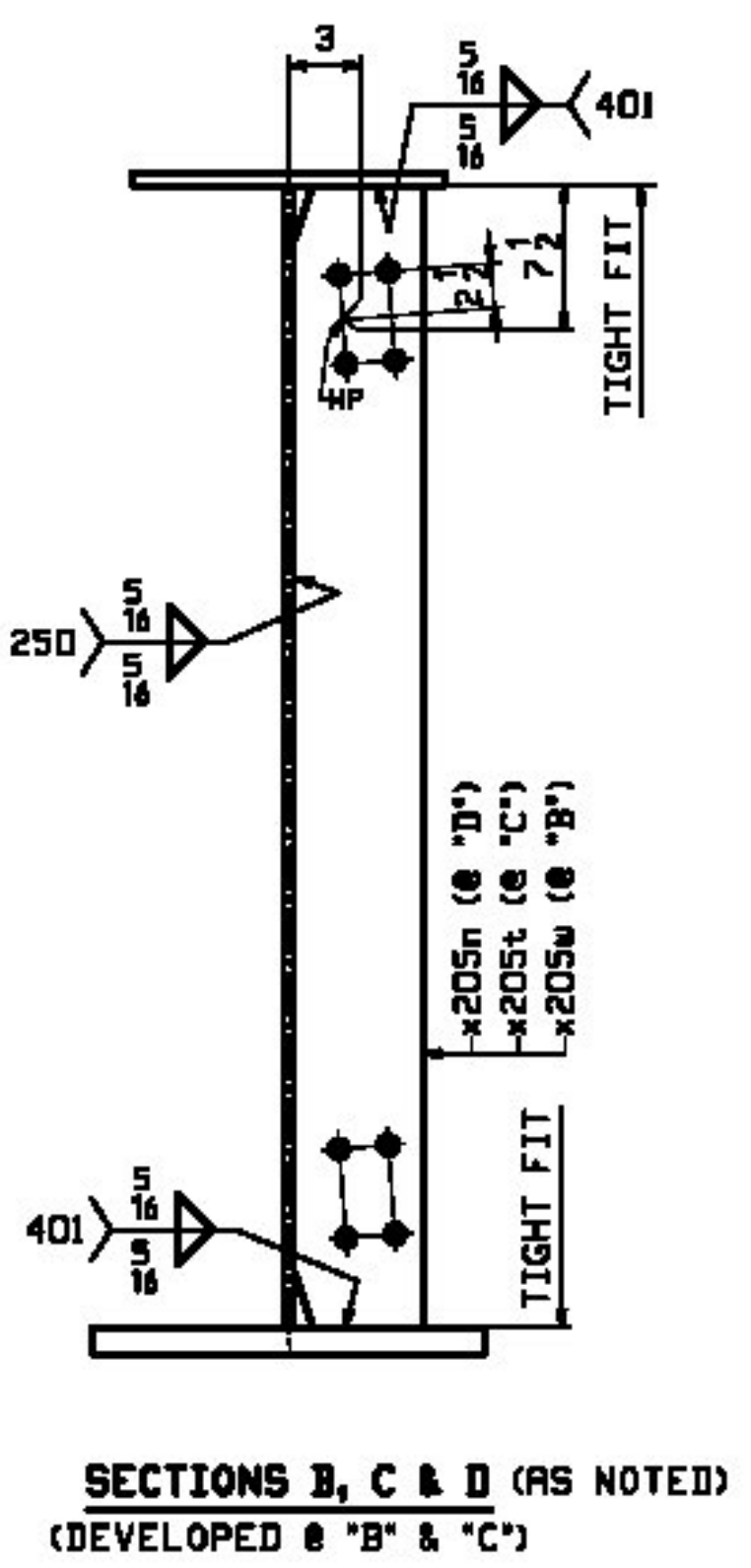
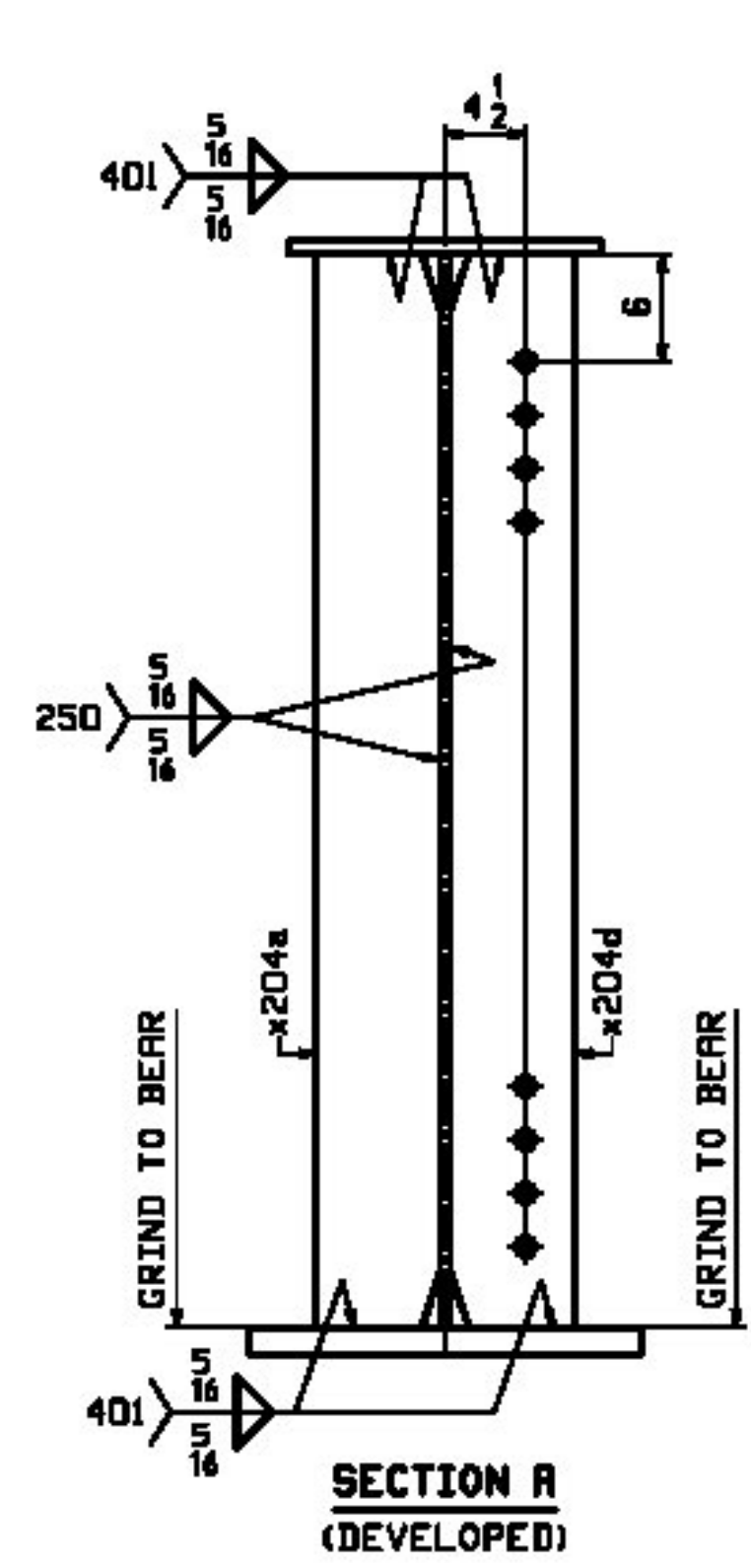
No Exception Taken
 Make Correction as Noted
 Submit Specified Item
 Revise and Resubmit as Noted
 Rejected

T-Y-LIN INTERNATIONAL
 Checked in for general compliance with the design concept of the project and general compliance with the information given in the contract documents only. Any notes shown is not an approval and is subject to the requirements of the plans and specifications. Any section shown on a specific item shall not indicate the checking of an assembly of which the item is a component. Contractor is solely responsible for dimensions which shall be confirmed and controlled at the job site, fabrication processes, techniques of construction, safety precautions, and coordination of its work with that of all other trades and the satisfactory performance of its work.
 Reviewed By: *Jed* Date: May 29, 2012

ONE - GIRDER - 204G4R

FOR FIELD SPICE STANDARD DETAILS SEE DRAWING X201.
 FOR GIRDER STANDARD DETAILS SEE DRAWINGS X204 & X205.
 FOR CAMBER & FLANGE DIAGRAMS SEE DRAWING C201.
 FOR WEB ELEVATION DIAGRAM SEE DRAWING W201.
 FOR GENERAL NOTES SEE DRAWING GNI.
 T2 DENOTES MATERIAL SUBJECT TO CHARPY V-NOTCH TESTING.

NOTE "B"
 NO PRINT AREA AT EDGES AND BOTTOM OF BOTTOM FLANGE.
 (FIELD WELDED SOLE PLATE).



REV.	DATE	REMARKS	DMN	CHK	APVL	SHOP
△	5/10/2012	REV. DUALITY STIFFS (SECT'S F, G & H) (EXTRA-TCC-1054001)	JTB	TJB		
0						

MATERIAL: M270-S0W (UN) SURFACE PREP. & PAINT: SEE DWG GNI HOLES: 15 1/8" φ SHOP BOLTS: NONE

DESCRIPTION: GIRDER - 204G4R

CASCO BAY STEEL STRUCTURES, INC.
 1 WALLACE AVE. PHONE (207) 780-6722
 SOUTH PORTLAND, ME 04106 FAX. (207) 780-6726

STRUCTURE: I-91 BRIDGE 6S OVER WHITESTONE BROOK & WILLIAMS STREET COUNTY OF MINDHAM
 DRAWN: JTB DATE: 07/11
 CHECKED: TJB DATE: 07/23

LOCATION: Town of Brettleboro, VT. JOB NO. 479 DWG NO. 204
 PROJ NO. IM 091-1(SD) CUSTOMER: BECK & BELLUCCI REV. △