

BILL OF MATERIAL						JOB NO.	ENGINE NO.	REV.
						479	203	▲
ROW INFO	SHOP	QTY	MATERIAL	LENGTH	REMARKS	WT	PROCUREMENT	NOTES
PAGE	LINE	MARK		FT				
		203G3A	1	GIRDER		2745		
203	G	1	wa	PL 5x93	71 10 3/8			
204	Q	1	ta	PL 3/4x15 1/2	36 10 5/8			
204	L	1	tb	PL 1/2x15 1/2	20 0			
204	C	1	tc	PL 2x15 1/2	14 11 7/8			
203	A	1	ba	PL 1x18	21 7 1/2			
202	M	1	bb	PL 1 1/2x18	15 0			
201	S	1	bc	PL 2x18	34 11 1/2			
208	C	1	x204c	PL 1x7 1/2	6 2 1/2			
208	C	1	x204d	PL 1x7 1/2	6 2 1/2			
208	L	1	x204p	PL 1/2x7	6 1 1/2			
208	L	1	x204t	PL 2x7	6 1 1/2			
208	E	2	x205a	PL 1/2x7 1/2	7 9			
208	Q	3	x205af	PL 2x7 1/2	7 9			
208	S	1	x205ak	PL 1/2x7 1/2	7 2 1/2			
208	U	1	x205an	PL 1/2x7 1/2	6 5 1/2			
208	F	1	x205c	PL 1/2x7 1/2	7 9 1/2			
208	G	1	x205f	PL 1/2x7 1/2	6 10 1/2			
208	E	2	x205n	PL 1/2x7 1/2	7 9			
208	F	1	x205t	PL 1/2x7 1/2	7 9 1/2			
208	G	1	x205u	PL 1/2x7 1/2	6 10 1/2			

No Exception Taken
 Make Correction as Noted
 Submit Specified Item.
 Revise and Resubmit as Noted
 Rejected

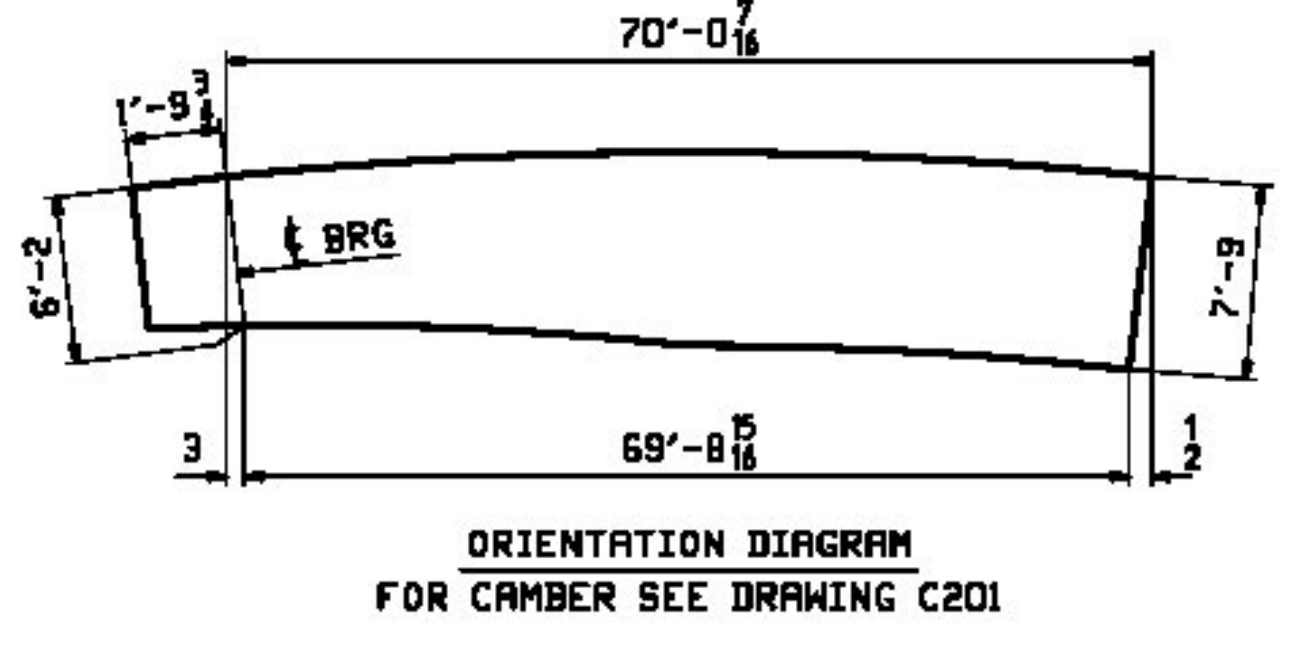
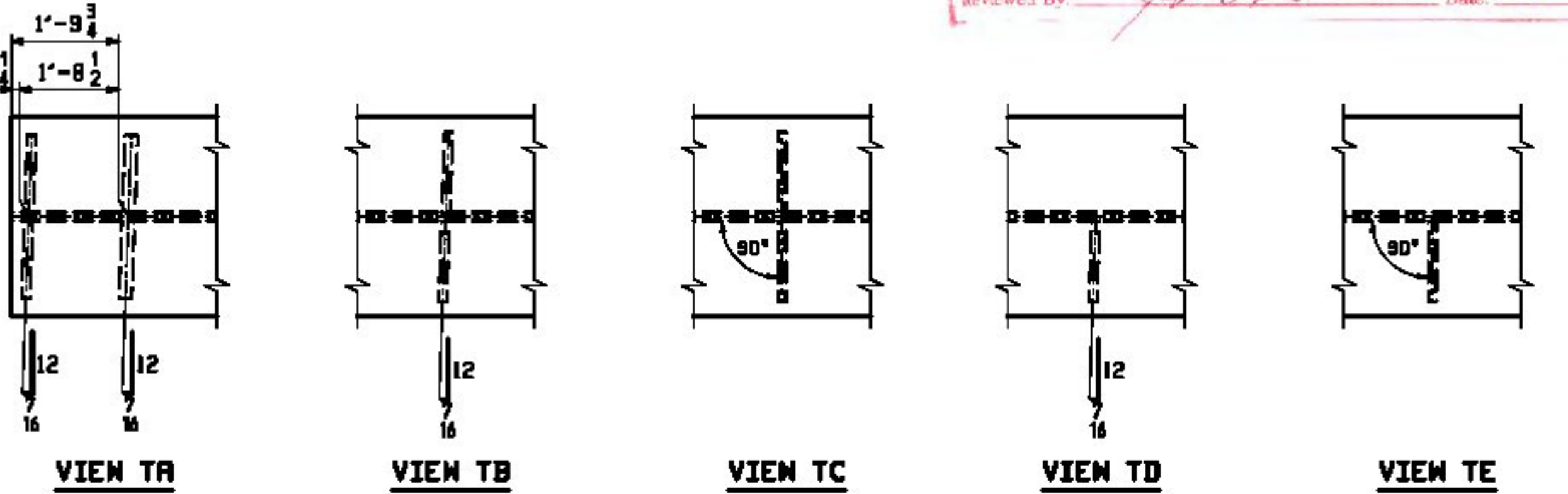
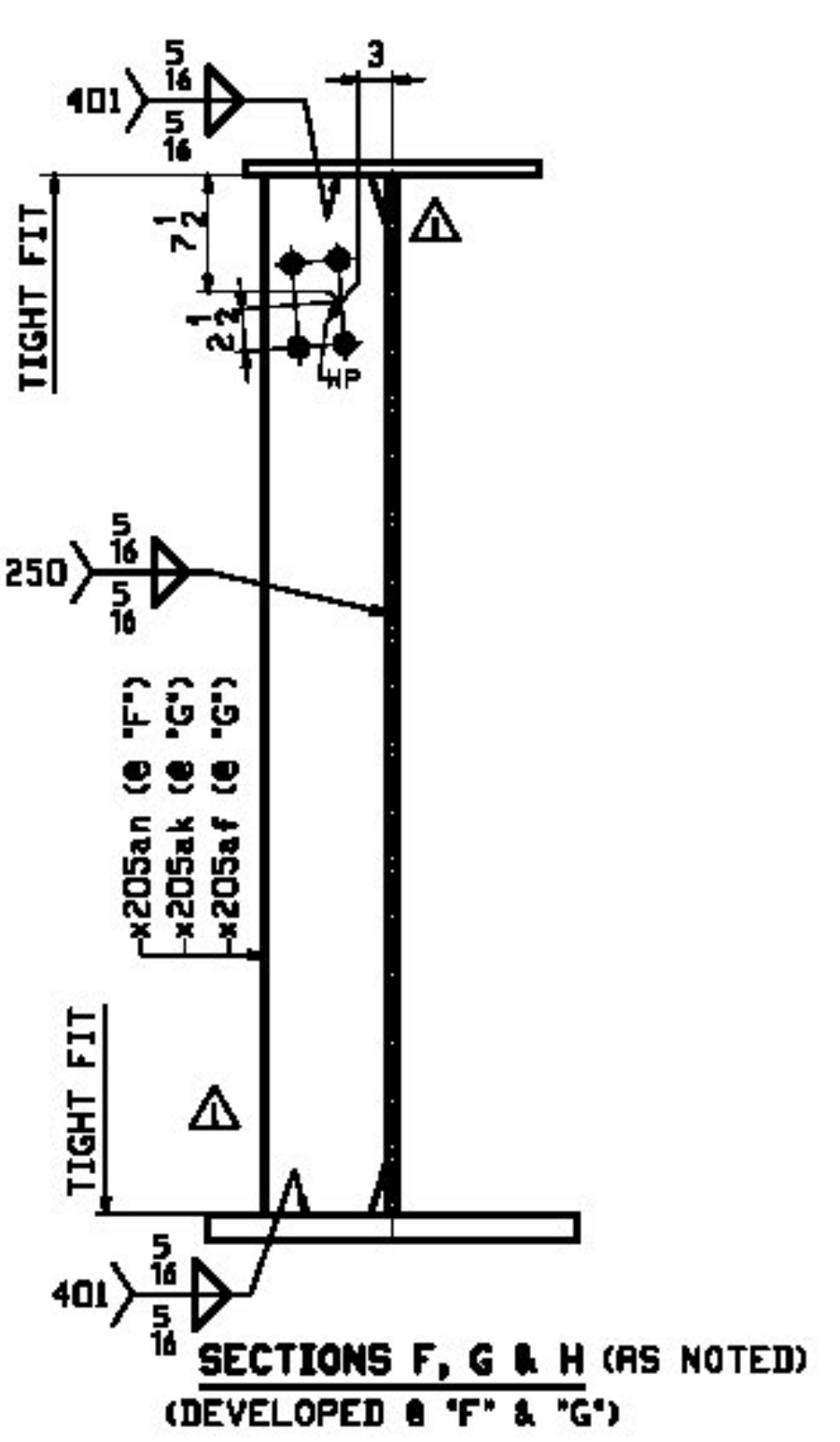
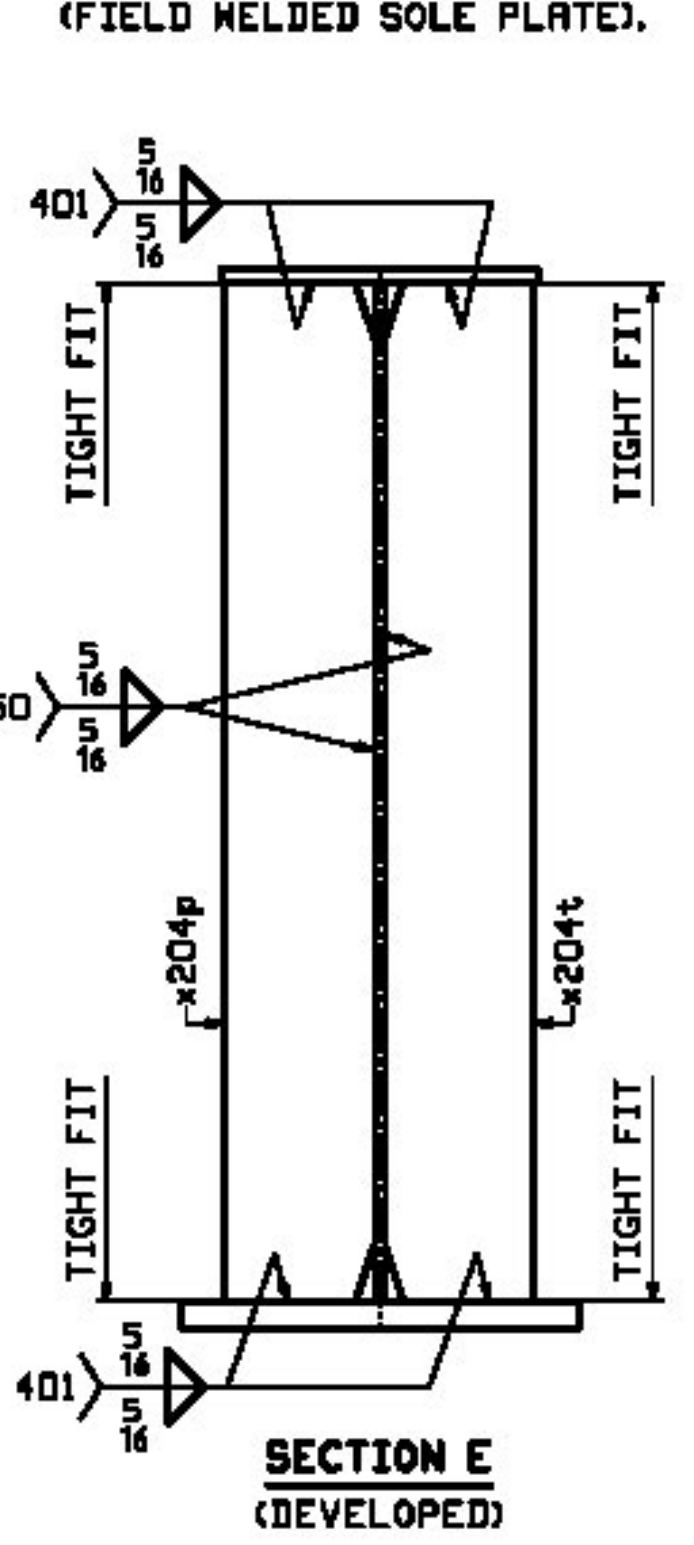
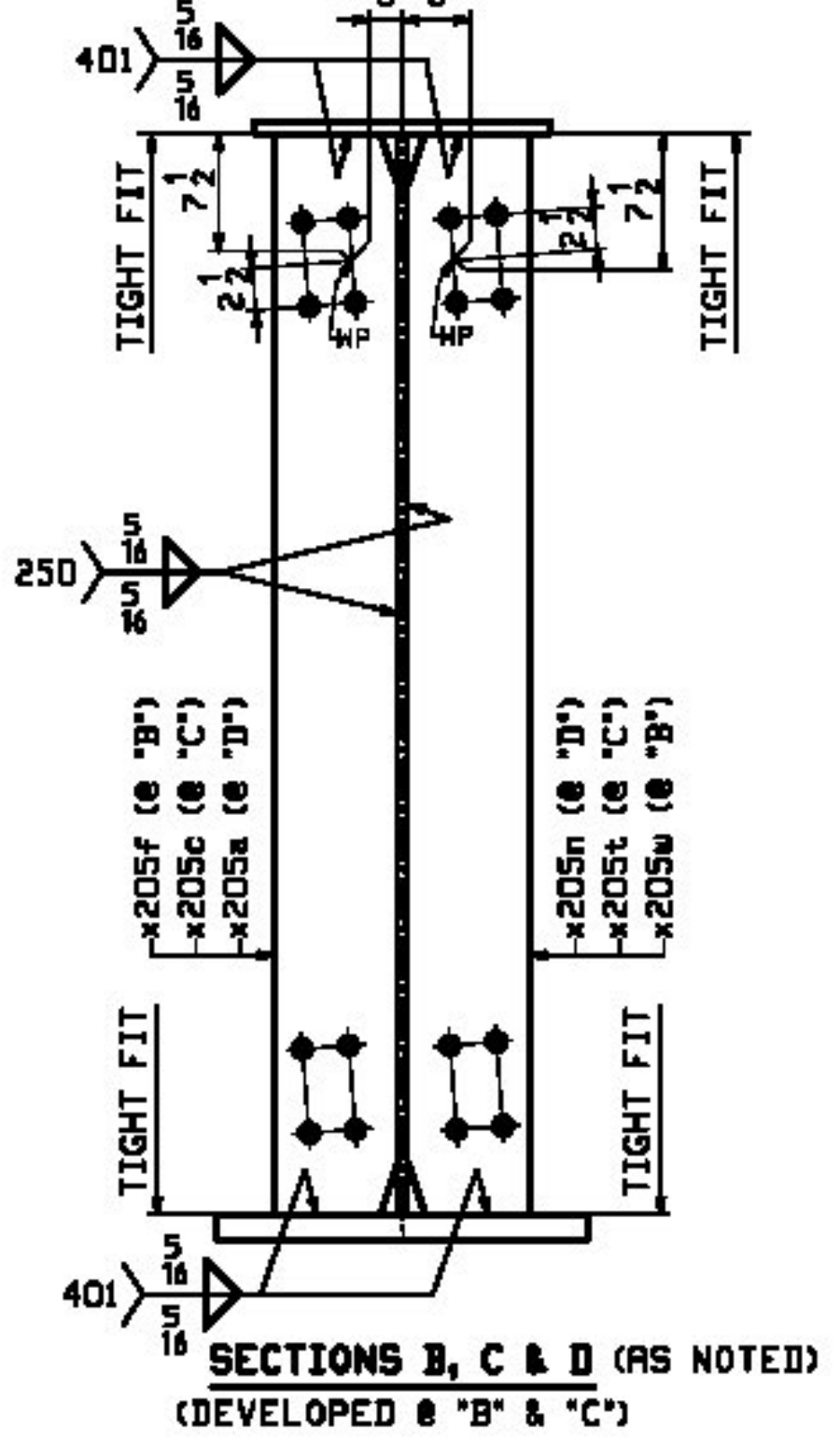
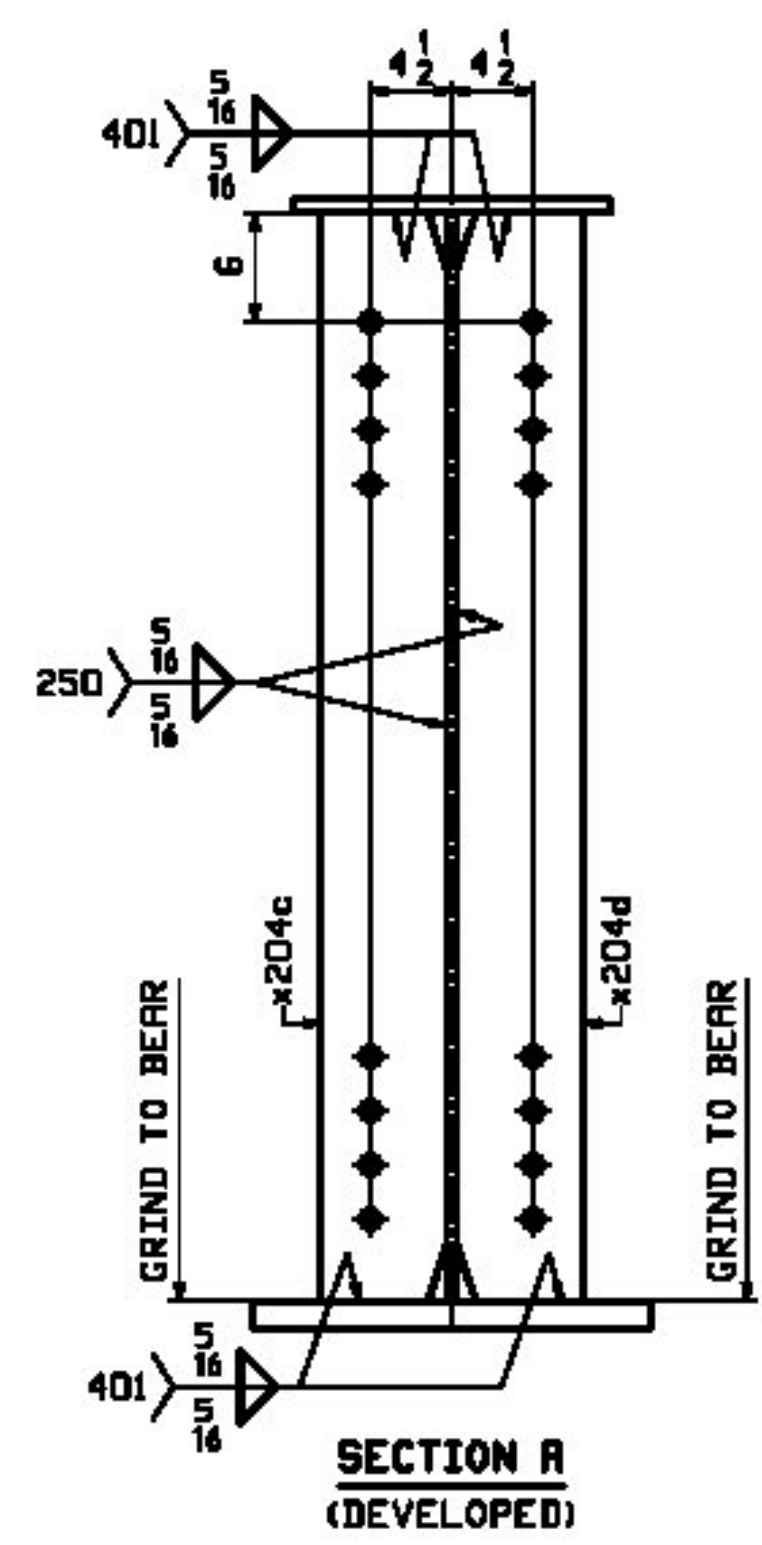
Checking is for general compliance with the design concept of the project and general compliance with the information given in the contract documents only. Any action shown is not an approval and is subject to the requirements of the plans and specifications. Any action shown on a specific item shall not indicate the checking of an assembly of which the item is a component. Contractor is solely responsible for dimensions which shall be confirmed and corrected at the job site, fabrication processes, techniques of construction, safety precautions, and coordination of its work with that of all other trades and the satisfactory performance of its work.

Reviewed By: *J. J. [Signature]* Date: May 29, 2012

ONE - GIRDER - 203G3A

FOR FIELD SPICE STANDARD DETAILS SEE DRAWING X201.
 FOR GIRDER STANDARD DETAILS SEE DRAWINGS X204 & X205.
 FOR CAMBER & FLANGE DIAGRAMS SEE DRAWING C201.
 FOR WEB ELEVATION DIAGRAM SEE DRAWING W201.
 FOR GENERAL NOTES SEE DRAWING GNI.
 T2 DENOTES MATERIAL SUBJECT TO CHARPY V-NOTCH TESTING.

NOTE "B"
 NO PRINT AREA AT EDGES AND BOTTOM OF BOTTOM FLANGE.
 (FIELD WELDED SOLE PLATE).



REV.	DATE	REMARKS	DMN	CHK	APVL	SHOP
5/10/2012		REV. DILLITY STIFFS (SECT'S F, G & H) (EXTRA-TCC-1054001)	JTB	TJB		
MATERIAL:		SURFACE PREP. & PAINT:		HOLES:		SHOP BOLTS:
M270-S0W (UN)		SEE DWG GNI		15/16" φ		NONE
DESCRIPTION: GIRDER - 203G3A						
CASCO BAY STEEL STRUCTURES, INC.						
1 WALLACE AVE.			PHONE (207) 780-6722			
SOUTH PORTLAND, ME 04106			FAX (207) 780-6726			
STRUCTURE: I-91 BRIDGE 6S OVER WHITESTONE BROOK & WILLIAMS STREET COUNTY OF MINDHAM				DRAWN: JTB		DATE: 07/11
				CHKD: TJB		DATE: 07/23
LOCATION: Town of Brattleboro, VT.				JOB NO. 479		DWG NO. 203
PROJ NO. IM 091-1(SD)						REV. ▲
CUSTOMER: BECK & BELLUCCI						