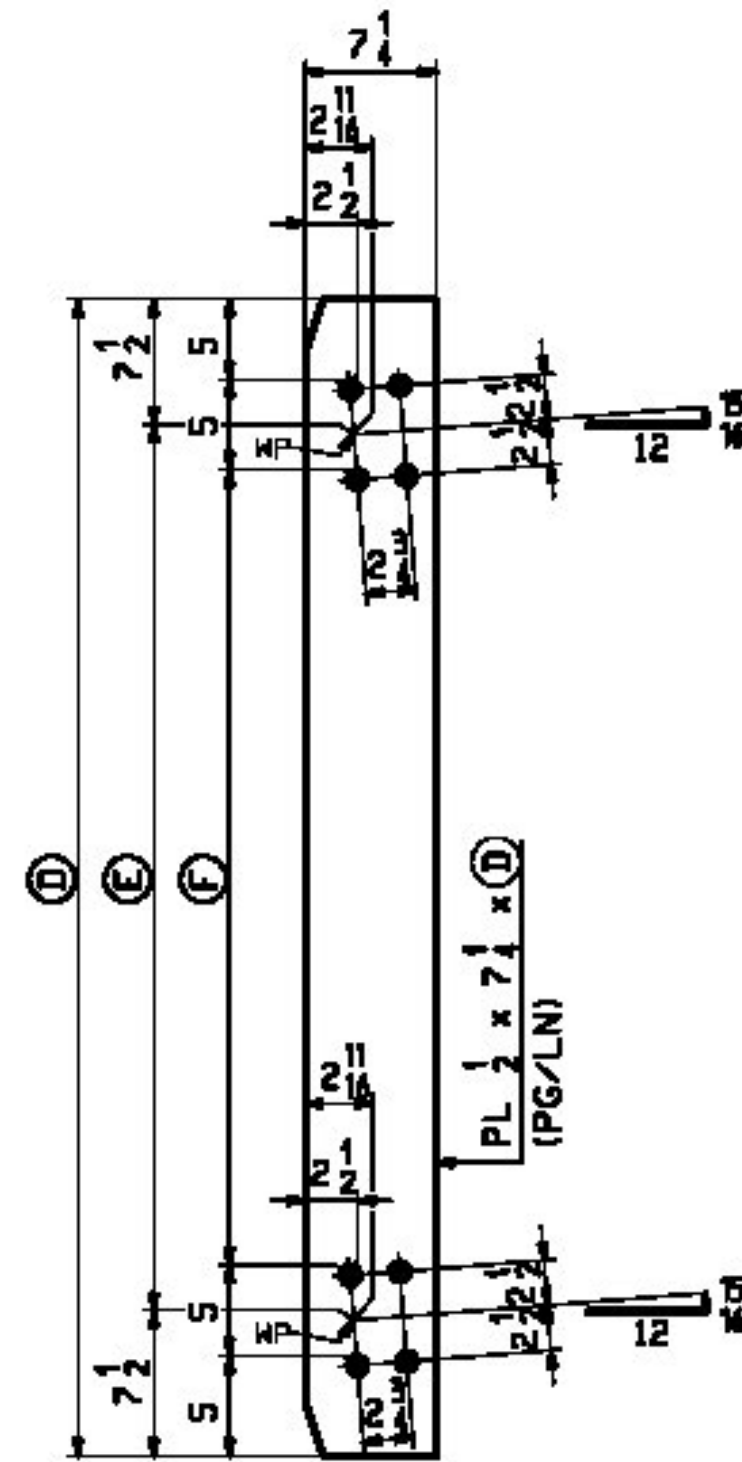
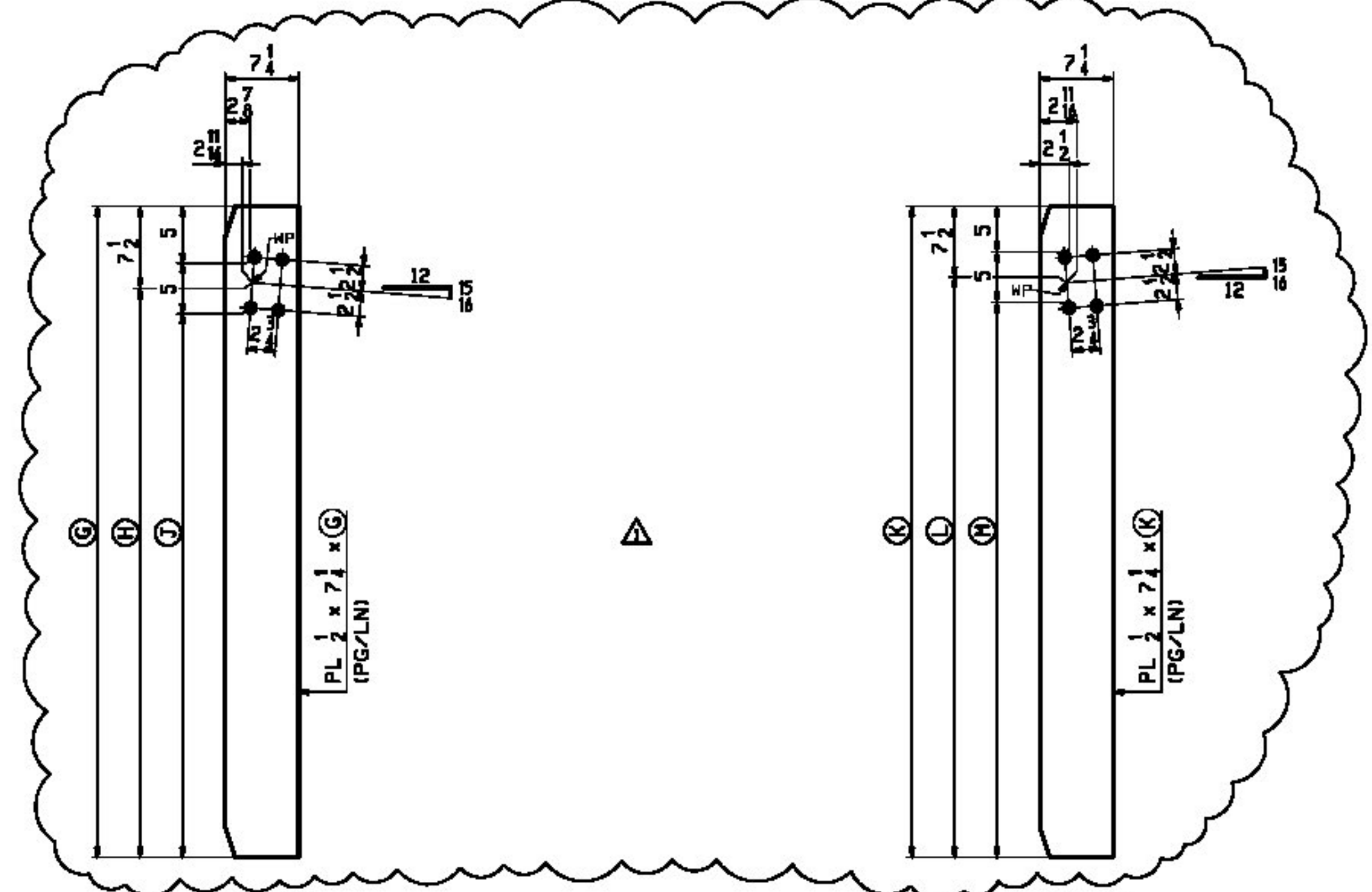


MARK "A"
INT OF (HIGH END)



MARK "B"
INT OF (LOW END)



MARK "C"
UTILITY CONN UI (HIGH END)

MARK "D"
UTILITY CONN UI (LOW END)

MARK "A"	QTY	A	B	C	PG/LN
x205a	57	7'-9	6'-6	6'-1	208/E
x205b	3	7'-8 1/8	6'-5 1/8	6'-0 1/8	208/F
x205c	3	7'-6 9/16	6'-3 9/16	5'-10 9/16	208/F
x205d	3	7'-1 1/8	5'-10 1/8	5'-5 1/8	208/G
x205f	3	6'-10 5/16	5'-7 5/16	5'-2 5/16	208/G
x205g	3	6'-6 1/16	5'-3 1/16	4'-10 1/16	208/H
x205k	3	5'-11	4'-8	4'-3	208/J
x205m	3	5'-4	4'-1	3'-8	208/K

MARK "B"	QTY	D	E	F	PG/LN
x205n	57	7'-9	6'-6	6'-1	208/E
x205p	3	7'-8 1/8	6'-5 1/8	6'-0 1/8	208/F
x205t	3	7'-6 9/16	6'-3 9/16	5'-10 9/16	208/F
x205v	3	7'-1 1/8	5'-10 1/8	5'-5 1/8	208/G
x205w	3	6'-10 5/16	5'-7 5/16	5'-2 5/16	208/G
x205y	3	6'-6 1/16	5'-3 1/16	4'-10 1/16	208/H
x205aa	3	5'-11	4'-8	4'-3	208/J
x205ab	3	5'-4	4'-1	3'-8	208/K

MARK "C"	QTY	G	H	I	PG/LN
x205af	15	7'-9	7'-1 1/2	6'-11	208/Q
x205ag	1	7'-4 5/8	6'-9 1/8	6'-6 5/8	208/R
x205ak	1	7'-2 7/16	6'-6 5/16	6'-4 7/16	208/S
x205am	1	6'-9 9/16	6'-2 1/16	5'-11 9/16	208/T
x205an	1	6'-6 1/8	5'-10 5/8	5'-8 1/8	208/U
x205ap	1	6'-2 9/16	5'-7 1/16	5'-4 9/16	208/V
x205at	1	5'-7 1/2	5'-0	4'-9 1/2	208/W
x205ca	1	5'-1	4'-5 1/2	4'-3	208/Y

MARK "D"	QTY	K	L	M	PG/LN
x205av	15	7'-9	7'-1 1/2	6'-11	208/Q
x205aw	1	7'-4 5/8	6'-9 1/8	6'-6 5/8	208/R
x205ay	1	7'-2 7/16	6'-6 5/16	6'-4 7/16	208/S
x205ba	1	6'-9 9/16	6'-2 1/16	5'-11 9/16	208/T
x205bb	1	6'-6 1/8	5'-10 5/8	5'-8 1/8	208/U
x205bc	1	6'-2 9/16	5'-7 1/16	5'-4 9/16	208/V
x205bd	1	5'-7 1/2	5'-0	4'-9 1/2	208/W
x205cb	1	5'-1	4'-5 1/2	4'-3	208/Y

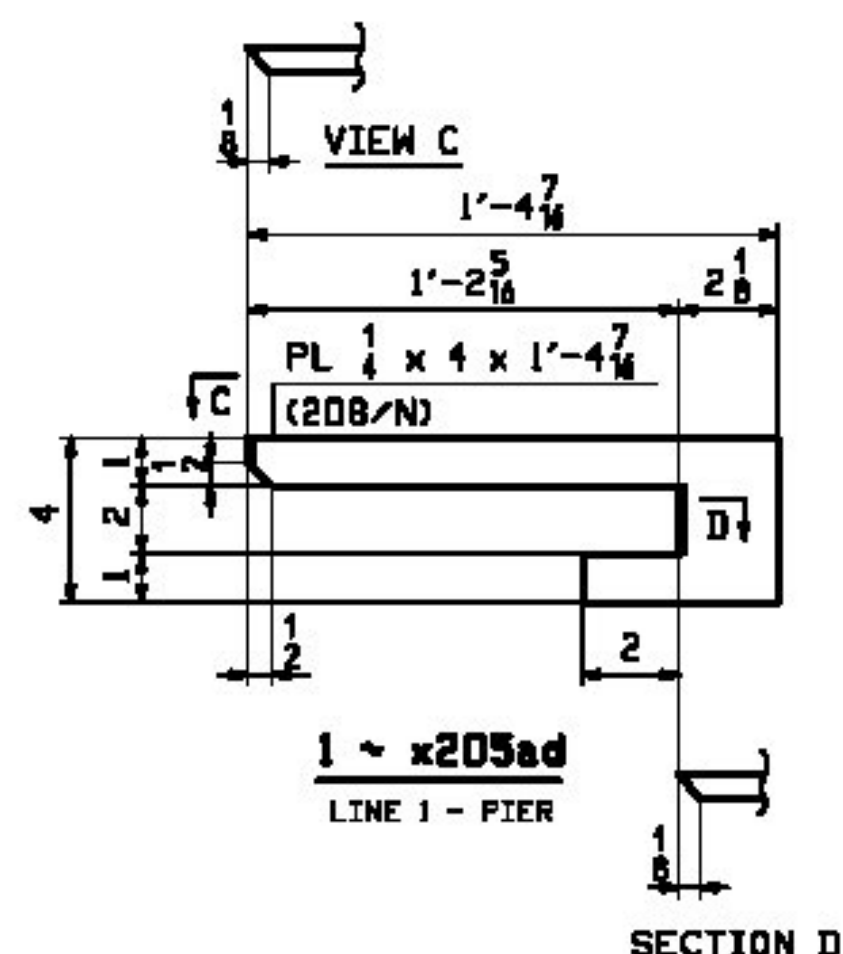
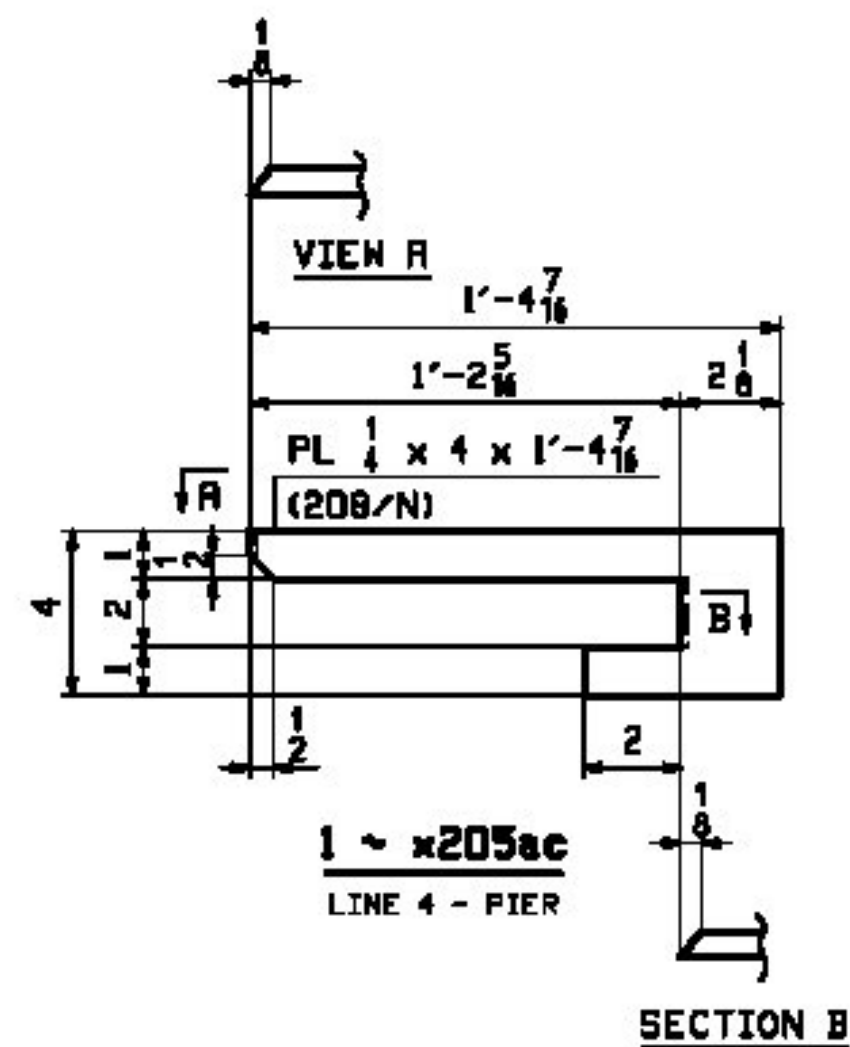
NOTE:
FOR GENERAL NOTES SEE DRAWING GNI.

T-Y-LIN INTERNATIONAL

No Exception Taken
 Make Correction as Noted
 Submit Specified Item
 Revise and Resubmit as Noted
 Rejected

Checking is for general compliance with the design concept; of the project and general compliance with the information given in the contract documents only. Any action shown is not an approval and is subject to the requirements of the plans and specifications. Any action shown on a specific item shall not indicate the checking of an assembly of which the item is a component. Contractor is solely responsible for: dimensions which shall be confirmed and executed at the job site, fabrication processes, techniques of construction, safety precautions, and coordination of its work with that of all other trades and the satisfactory performance of its work.

Reviewed By: *[Signature]* Date: May 29, 2012



REV	DATE	REMARKS	DMN	CHK	APVL	SHOP
5/10/2012		REV. MARKS 'C' & 'D' ADD x205ca, x205cb (EXTRA-TEC-1054001)	JTB	TJB		
MATERIAL:		SURFACE PREP. & PAINT:	HOLES:		SHOP BOLTS:	
M270-50M		SEE DWG GNI	15/16" φ		NONE	
DESCRIPTION: GIRDER STANDARD DETAILS						
CASCO BAY STEEL STRUCTURES, INC.						
1 WALLACE AVE.			PHONE (207) 780-6722			
SOUTH PORTLAND, ME 04106			FAX (207) 780-6726			
STRUCTURE: I-91 BRIDGE 6S OVER WHITESTONE BROOK & WILLIAMS STREET COUNTY OF MINDHAM				DRAWN:	DATE:	
				JTB	4/30	
				CHKD:	DATE:	
				TJB	07/23	
LOCATION: Town of Brattleboro, VT.				JOB NO.	DWG NO.	
PROJ NO. IM 091-1(SD)				479	X205	
CUSTOMER: BECK & BELLUCCI					REV. Δ	