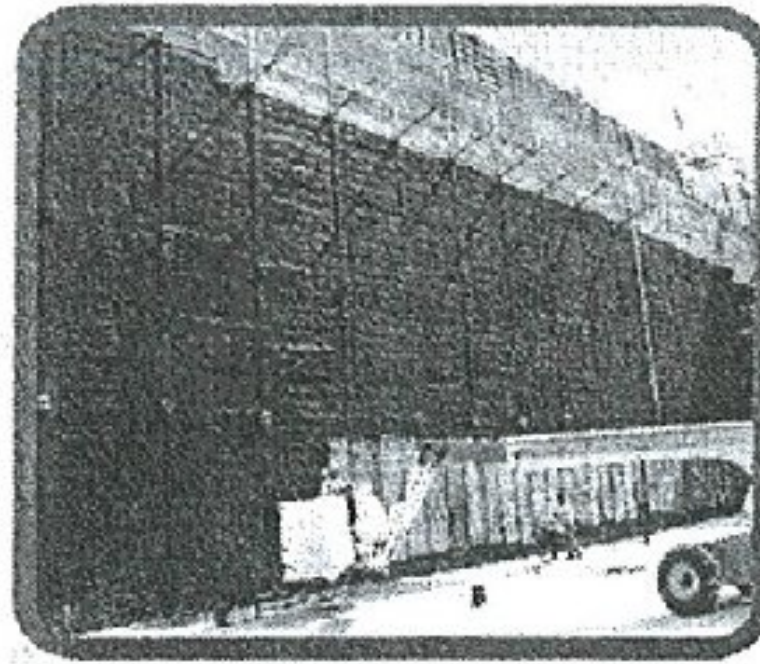


J-DRain®

Prefabricated Drainage Composites



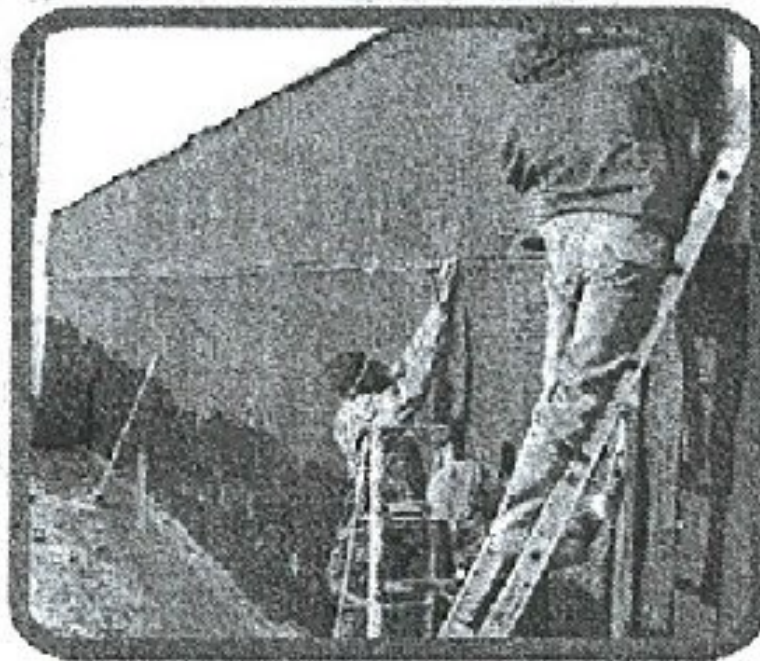
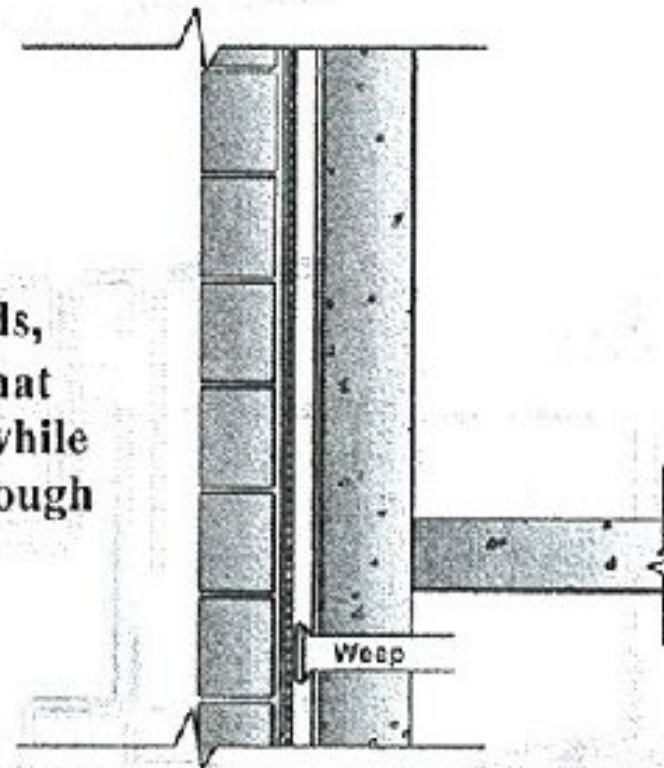
Highway Construction



Lagging Walls

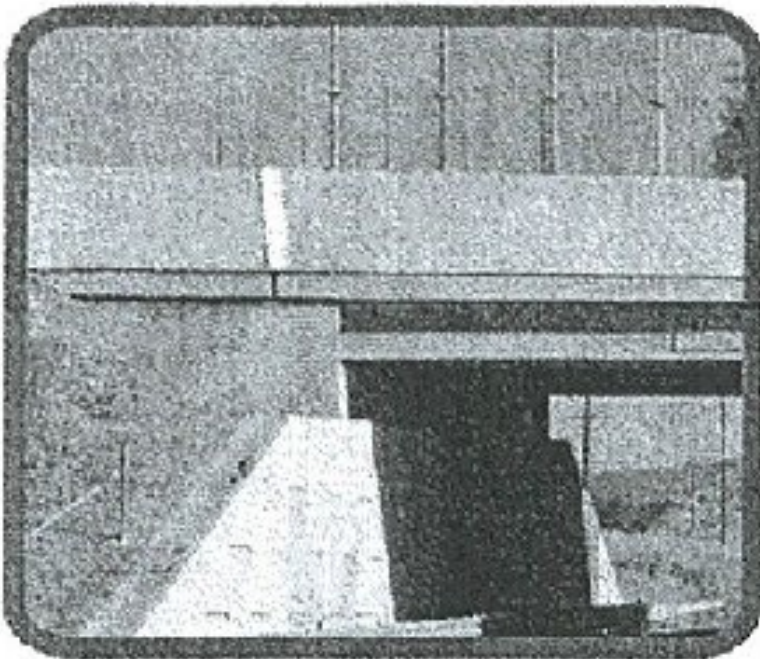
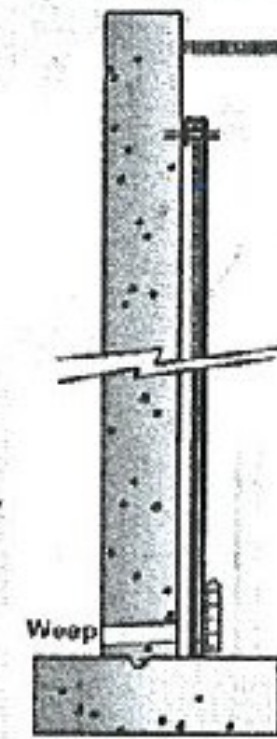
Proper drainage is extremely important when building a lagging wall. In order to avoid the high costs to build the wall to handle heavier loads, **J-DRain 400** series can be installed to reduce the hydrostatic pressure that can build up against the built wall. These products create an air void while the filter fabric retains the soil and particles to allow water to pass through and flow efficiently down the wall to weep holes or the **J-DRain SWD** collection system.

Note: Product can be cut in 1 & 2 ft. widths for chimney application.



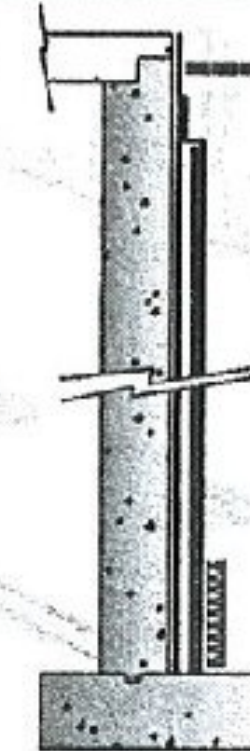
Retaining Walls

J-DRain 200 series, 400 series, & SWD provides a truly unique drainage and collection system when building a retaining wall. Since proper drainage is a critical part of retaining wall construction, the **J-DRain** system consisting of either vertical chimneys or full wall coverage and a base collection system can be installed at a fraction of the cost of pipe and gravel french drains, which can clog and offer low flow rates. These products create an air void while the filter fabric retains the soil and particles to allow water to pass through and flow efficiently down the wall to weep holes or the **J-DRain SWD** collection system. This system helps address hydrostatic pressure or additional pressure caused from water freezes which can cause leaks and failures.



Bridge Abutments

J-DRain 200, 300, & 400 series provides a revolutionary drainage and collection system when constructing bridge abutments. Since proper drainage is a critical part of bridge abutment construction, the **J-DRain** system which combines a wall composite drainage system along with a base collection system can be installed at a fraction of the cost of pipe and gravel french drains, which can clog and offer low flow rates. These products create an air void while the filter fabric retains the soil and particles to allow water to pass through and flow efficiently down the wall to the **J-DRain SWD** collection system. This system helps address hydrostatic pressure or additional pressure caused from water freezes which can cause leaks and failures.



No Reception Taken

Make Corrections noted

Submit Special Form

Revise and Resubmit as Needed

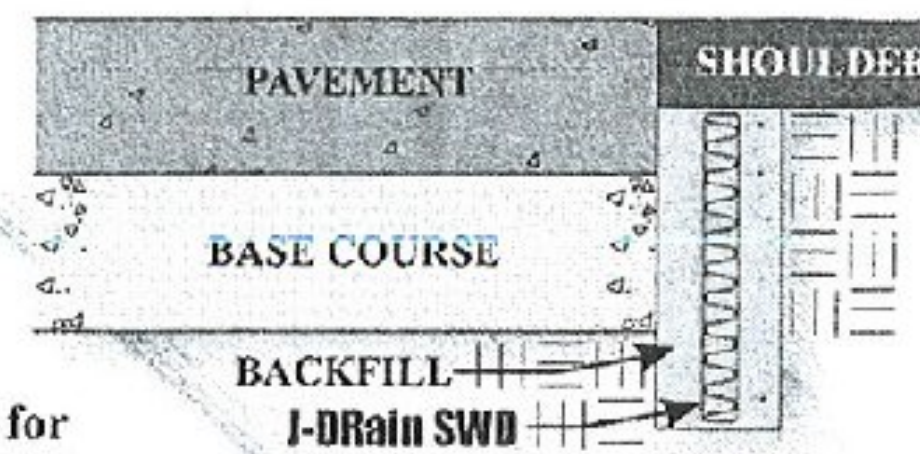
Reorder

Checking in the general contract documents, including the scope of the project and general compliance with the contract documents. Any action shown is not an approval of the contract documents or the requirements of the plans and specifications. Any action shown on this form shall not indicate the checking of an assembly which the manufacturer is responsible for. Dimensions shall be confirmed and correlated at the job site. Construction processes, techniques of construction, safety precautions, and specifications of the work with that of all other trades and the satisfactory performance of the work.

Approved By: *[Signature]* Date: 5/16/11

J-DRain

Most effective drainage system. This composite drainage system is a revolutionary, high strength, high performance drainage system. It eliminates the need for excavation to be made and bonded to the drainage core, preventing intrusion into the drainage system. Soil particles are held back by the filter fabric allowing water to be collected and conveyed to the discharge point.



www.j-drain.com

JDR Enterprises, Inc.

292 S. Main St., Suite 200 Alpharetta, GA 30004
(800) 843-7569 (770) 442-1461 Fax: (770) 664-7951