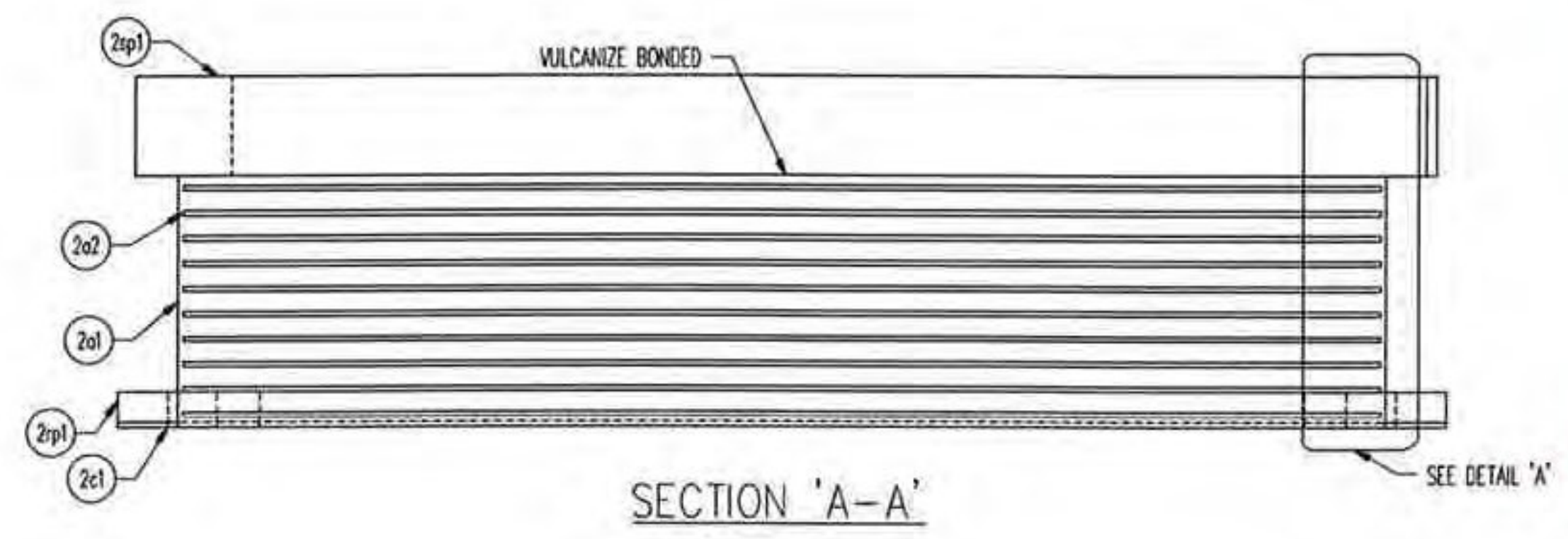
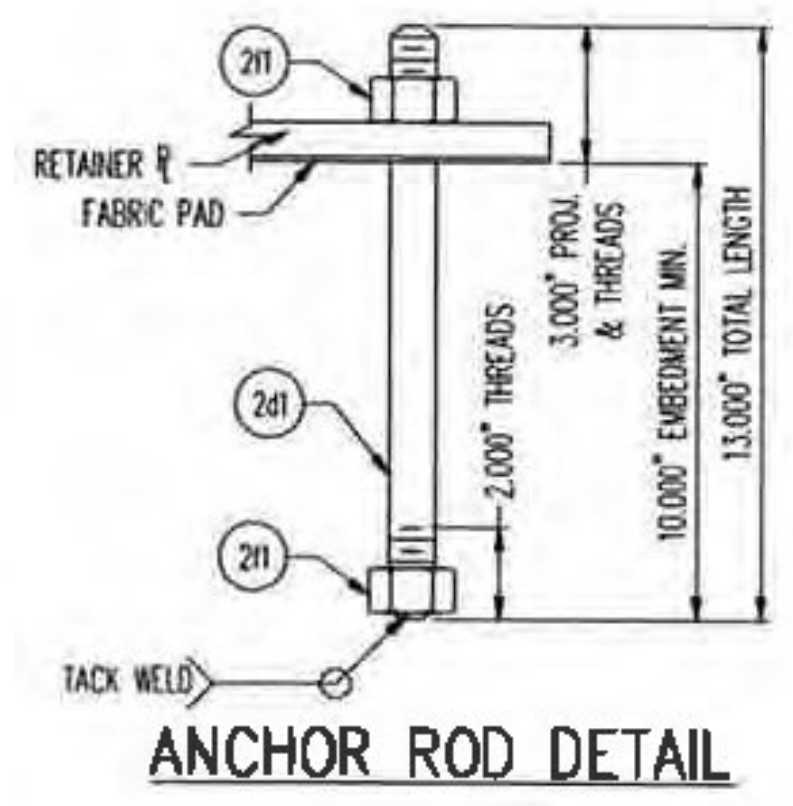


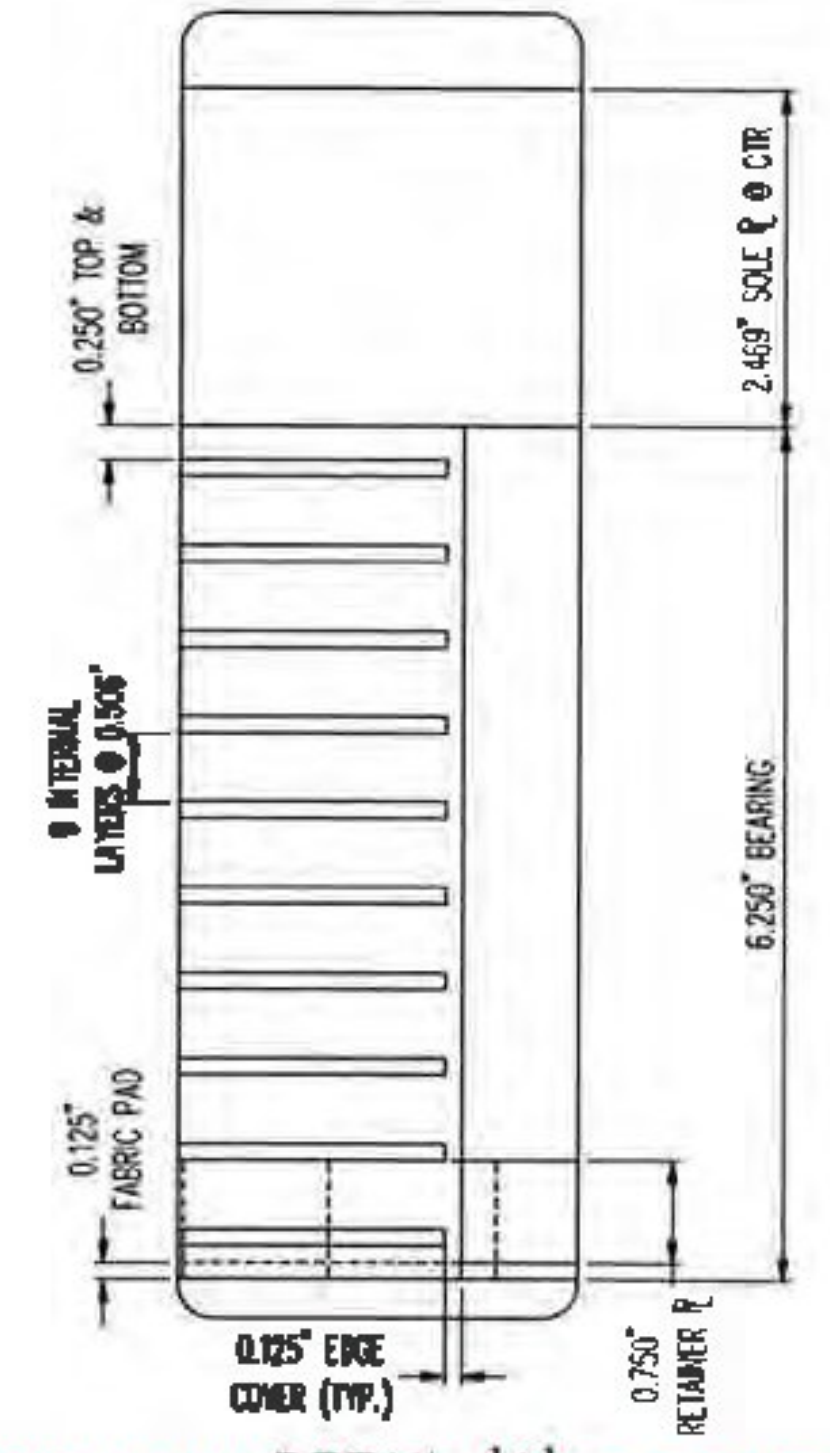
PLAN VIEW
ELASTOMERIC BEARING
(4) REQ'D @ BRIDGE 6 NORTHBOUND, PIER 1
(4) REQ'D @ BRIDGE 6 SOUTHBOUND, PIER 1



SECTION 'A-A'



ANCHOR ROD DETAIL



DETAIL A
T.Y. LIN INTERNATIONAL
SUBMITTAL REVIEW

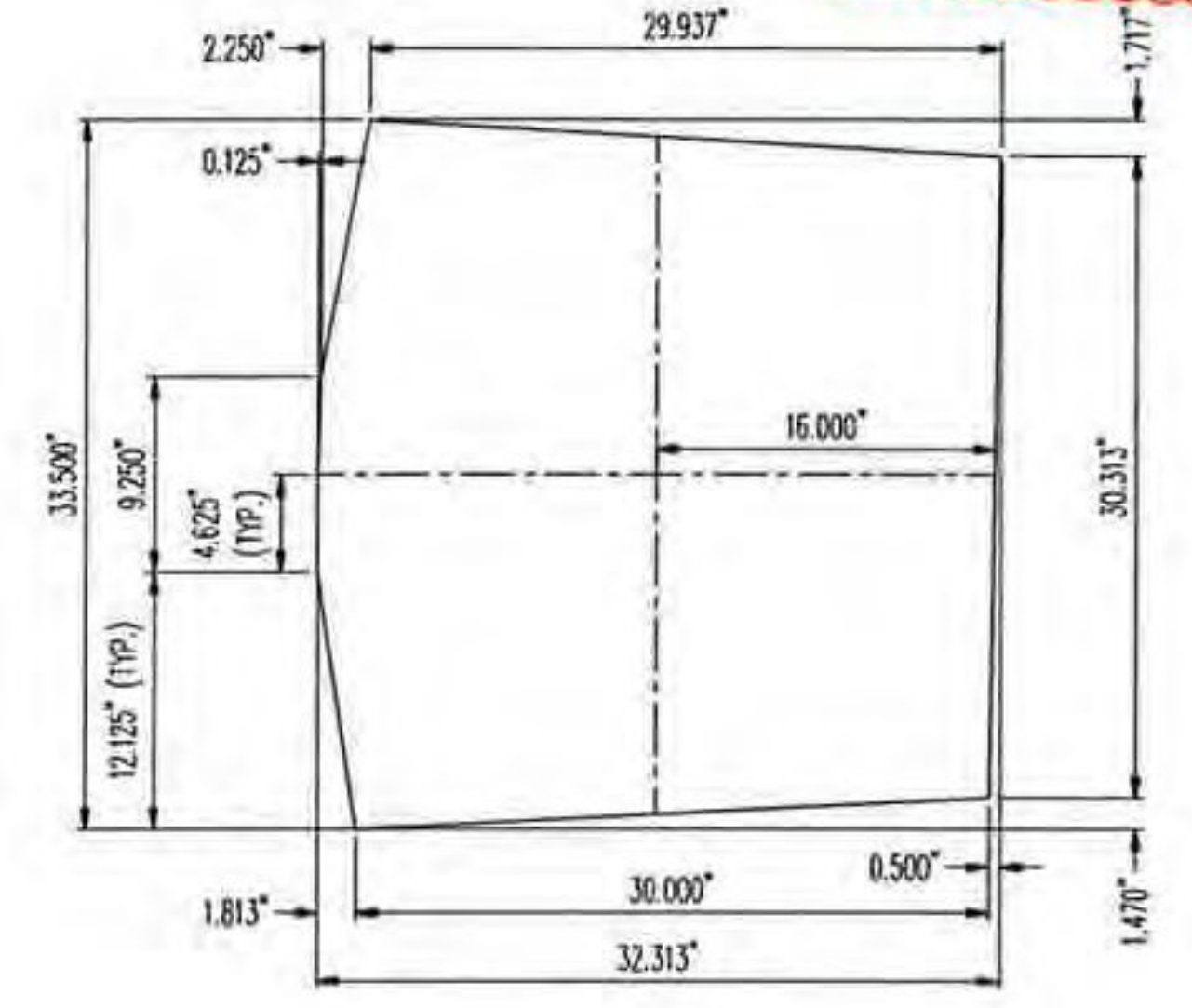
Review is for general conformance with the contract plans. Neither the presence nor the absence of markings or notations on this submittal shall be construed as relieving the contractor from compliance with the contract plans and specifications; nor shall this review serve in any way to alter the contract plans or specifications. The preparer of this submittal is solely responsible for the accuracy of dimensions, selection of proper materials, development of techniques, safety, and proper construction in performance of the work depicted hereon.

- No Exceptions Taken
- Rejected
- Make Corrections Noted
- Review Not Required
- Amend and Resubmit

By: *[Signature]* Date: 6/6/11

MR	QTY	DESCRIPTION	MATERIAL	LENGTH	REMARKS	REV
2A	8	ELASTOMERIC BEARING				
2a1	8	6.250" X 0.30.000"	NATURAL RUBBER		SHEAR MODULUS: 130 ±15%, GR. 4	
2a2	80	11 GA. X 0.29.750"	A1011 GR 36		PLAIN	
2sp1	8	3.023" X 32.313"	M270 GR 50 OR 50W (A709)	33.500"	SHAPE CUT; M111-HDC (A123)	
2B	8	RETAINER PLATE				
2p1	8	0.750" X 33.000"	M270 GR 36 (A709)	33.000"	INSIDE CUT OUT; M111-HDC (A123)	
2C	8	FABRIC PAD				
2c1	8	0.125" X 33.000"	AASHTO (LRFD) 18.10.2	33.000"	INSIDE CUT OUT	
2D	32	DOUBLE END ROD				
2d1	32	Ø1.000" X 13.000" DOUBLE END ROD	M314 GR 36 (F1554)		3" THREADS & 2" THREADS; M232-HDC (A153)	
2F	64	HEAVY HEX NUT				
2f1	64	Ø1.000" HEX NUT	M291-0H OR M292-2H (A563 OR A194)		M232-HDC (A153)	
					6/2/11 2:44:44 PM	

PLEASE VERIFY SEE TRANSMITTAL
Build to shear modulus 130 psi



SOLE P DETAIL

SEE SHT. G01 FOR GENERAL NOTES & COATING LIMITS.

REV.	DESCRIPTION	DATE	DET.	CHKD.
	LOCATION — INTERSTATE 01		ITEM	QUANTITY
	BRIDGE — 6NBS		33065-1104-2	8 OF 8
	PROJECT — AC IN 001-1(50)		33065-1107-2	8 OF 8
	P.O. NO. — BRATTLEBORO			
	DESIGNER — T.Y. LIN INTERNATIONAL			
	CUSTOMER — BECK & BELLUCCI, INC.			
	DESCRIPTION: VERSIFLEX ELASTOMERIC BEARING	SCALE: N.T.S.	DRAWN BY: DA	CHECKED BY: ANO
	WINDHAM CO., VT	DATE: 6/2/11	RELEASE: 1	SHEET: 02
	PROJECT NUMBER: 33065	PRODUCT CODE: 1104		