

JOB NO.		DRAWING NO.		REV.			
479		207		△			
ROW INFO	SHOP	BILL OF MATERIAL			REMARKS	WT	PROCUREMENT NOTES
PAGE LINE	MARK	QTY	MARK	MATERIAL	LENGTH FT		
	207G3B	1		GIRDER		38625	
203	L	1	wa	PL 5/8x93	47 5/8		M270-SOWT2
203	Q	1	wb	PL 5/8x93	42 2/8		M270-SOWT2
204	A	1	tw	PL 2x15 1/2	68 2/8		M270-SOW
204	J	1	tb	PL 1 1/2x15 1/2	21 10 5/8		M270-SOW
201	R	1	ba	PL 2x18	26 2/8		M270-HPSOWT2
201	Q	1	bc	PL 2x18	42 0		M270-HPSOWT2
202	C	1	bb	PL 1 1/2x18	21 9		M270-HPSOWT2
208	E	6	x205a	PL 1 1/2x7 1/4	7 9		M270-SOW
208	Q	6	x205af	PL 1 1/2x7 1/4	7 9		M270-SOW
208	E	6	x205n	PL 1 1/2x7 1/4	7 9		M270-SOW

ONE - GIRDER - 207G3B

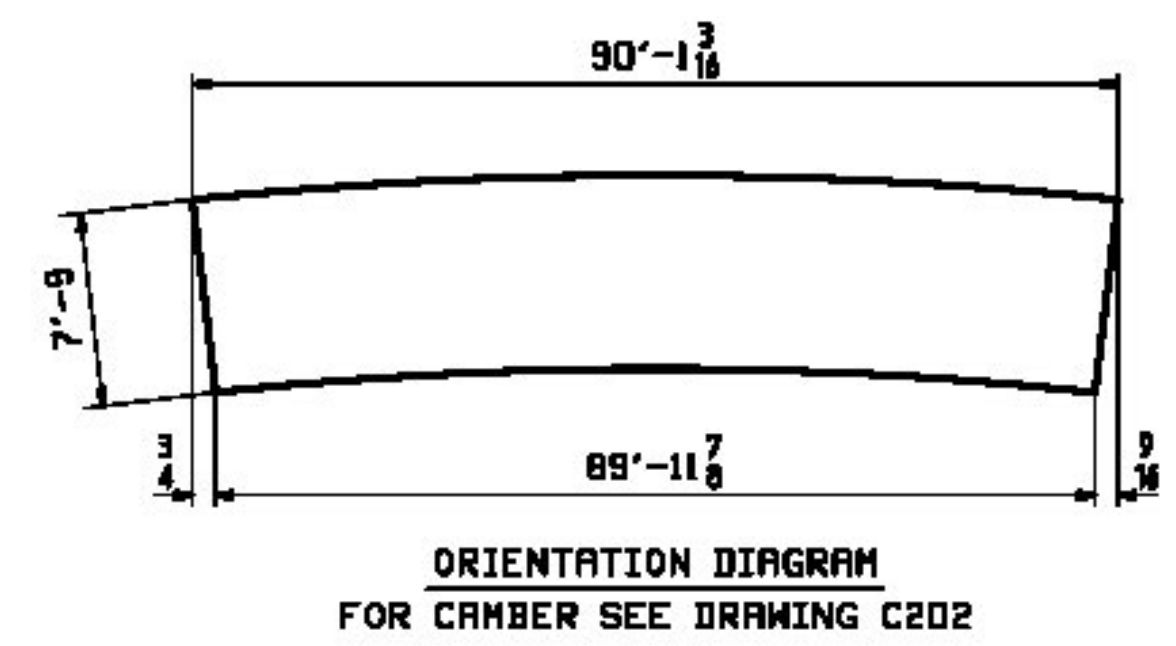
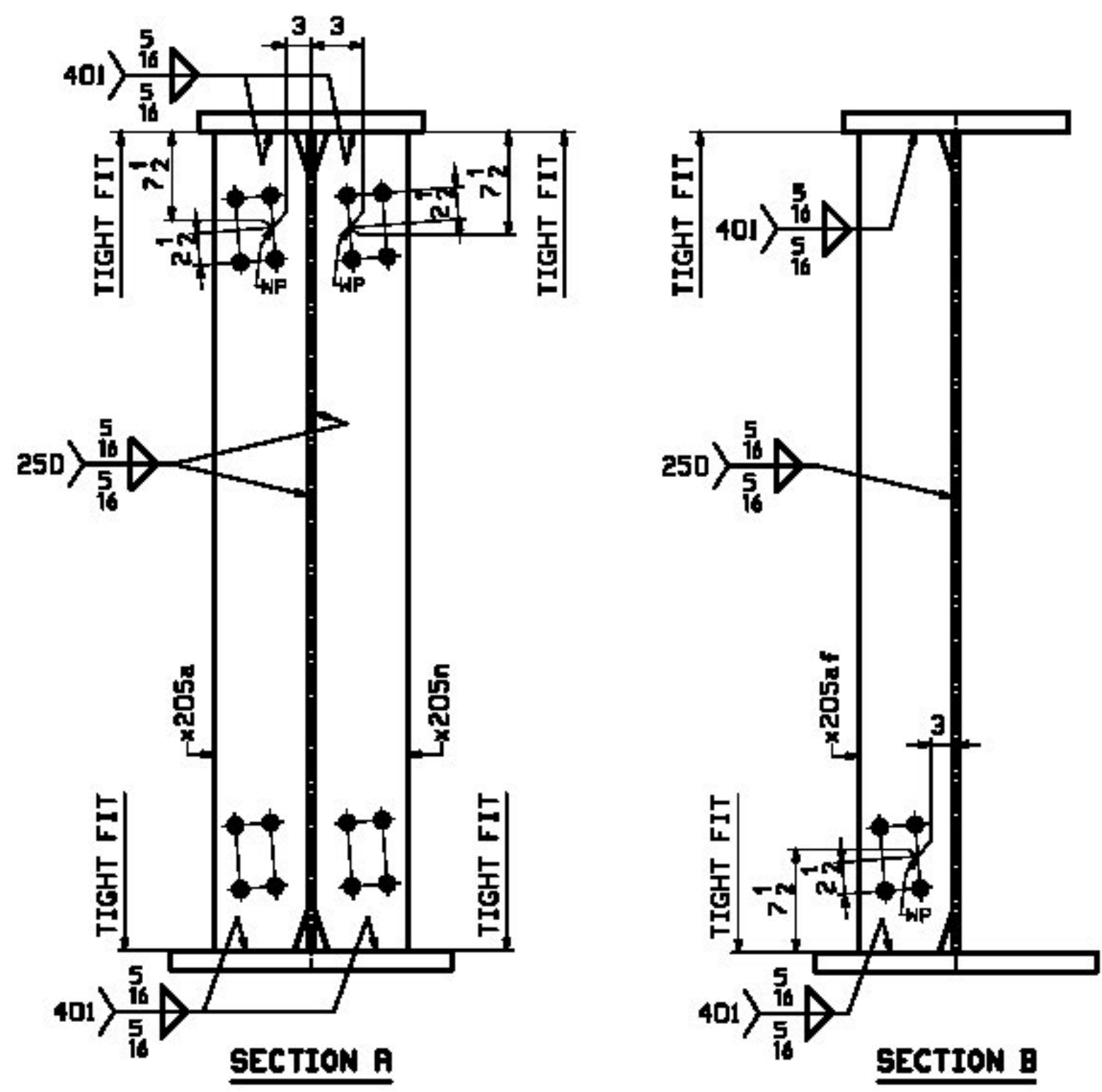
FOR FIELD SPLICE STANDARD DETAILS SEE DRAWINGS X201 & X202.
 FOR GIRDER STANDARD DETAILS SEE DRAWING X205.
 FOR CAMBER & FLANGE DIAGRAMS SEE DRAWING C202.
 FOR GENERAL NOTES SEE DRAWING G01.
 T2 DENOTES MATERIAL SUBJECT TO CHARPY V-NOTCH TESTING.

T-Y-LIN INTERNATIONAL

No Exception Taken
 Make Correction as Noted
 Submit Specified Item
 Revise and Resubmit as Noted
 Rejected

Checking is for general compliance with the design concept of the project and general compliance with the information given in the contract documents only. Any action shown is not an approval and is subject to the requirements of the plans and specifications. Any action shown on a specific item shall indicate the checking of an assembly of which the item is a component. Contractor is solely responsible for: dimensions which shall be confirmed and correlated at the job site, fabrication processes, techniques of construction, safety precautions, and coordination of its work with that of all other trades and the satisfactory performance of its work.

Reviewed By: *[Signature]* Date: 11/28/11



11/17/11	ADD BTM FLG SPLICE, PL bb	KC	ML			
REV.	DATE	REMARKS	DMN	CHK	APVL	SHOP
MATERIAL:	M270-SOW (UN)	SURFACE PREP. & PAINT:	SEE DWG G01	HOLES:	15 1/8 φ	SHOP BOLTS: NONE
DESCRIPTION: GIRDER - 207G3B						
CASCO BAY STEEL STRUCTURES, INC. 1 WALLACE AVE. SOUTH PORTLAND, ME 04106 PHONE (207) 780-6722 FAX. (207) 780-6726						
STRUCTURE: I-91 BRIDGE 6S OVER WHITESTONE BROOK & WILLIAMS STREET COUNTY OF MINDHAM				DRAWN:	JTB	DATE: 07/11
LOCATION: Town of Brattleboro, VT.				CHKD:	TJB	DATE: 07/23
PROJ NO.	IM 091-1(SD)	JOB NO.	479	DWG NO.	207	REV. △
CUSTOMER: BECK & BELLUCI						