

ONE - GIRDER - 206G2B

FOR FIELD SPLICE STANDARD DETAILS SEE DRAWINGS X201 & X202.
 FOR GIRDER STANDARD DETAILS SEE DRAWING X205.
 FOR CAMBER & FLANGE DIAGRAMS SEE DRAWING C202.
 FOR GENERAL NOTES SEE DRAWING GNI.
 T2 DENOTES MATERIAL SUBJECT TO CHARPY V-NOTCH TESTING.

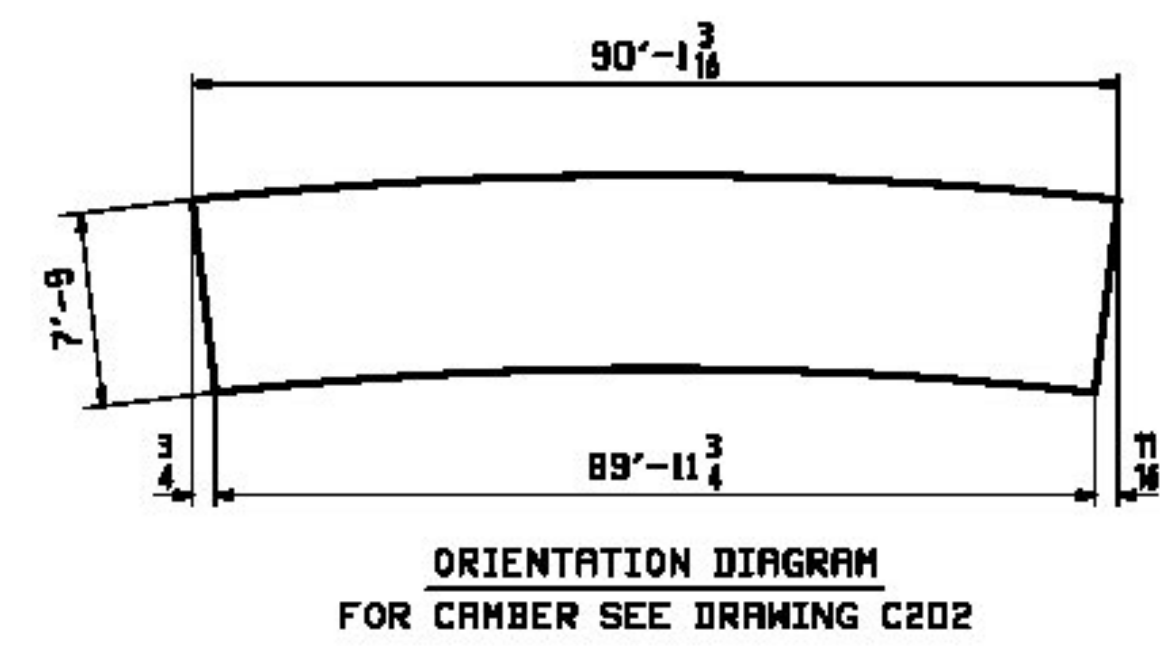
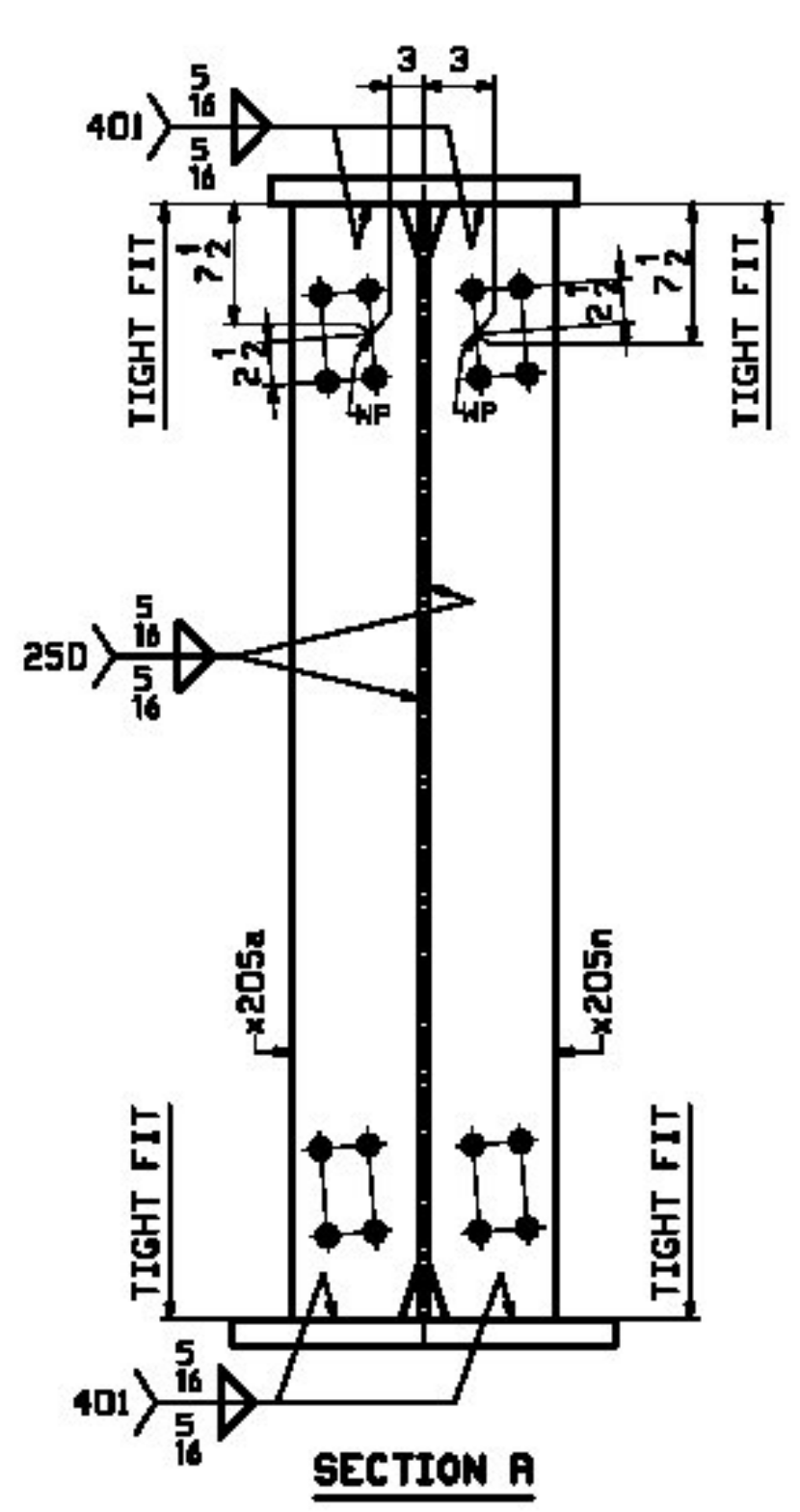
JOB NO.		DRAWING NO.		REV.			
479		206		△			
ROW INFO	SHOP	QTY	MATERIAL	LENGTH	REMARKS	WT	PROCUREMENT NOTES
206G2B	1		GIRDER			38252	
203	L	1	wa	47 5/8	M270-SOWT2		
203	Q	1	wb	42 2/8	M270-SOWT2		
204	A	1	tw	68 2/8	M270-SOW		
204	J	1	tb	21 10 5/8	M270-SOW		
201	R	1	ba	26 2/8	M270-HPSOWT2		
201	Q	1	bc	42 0	M270-HPSOWT2		
202	C	1	bb	21 8 3/8	M270-HPSOWT2		
208	E	6	x205a	7 9	M270-SOW		
208	E	6	x205n	7 9	M270-SOW		

T-Y-LININTERNATIONAL

No Exception Taken
 Make Correction as Noted
 Submit Specified Item
 Revise and Resubmit as Noted
 Rejected

Checking is for general compliance with the design concept of the project and general compliance with the information given in the contract documents only. Any action shown is not an approval and is subject to the requirements of the plans and specifications. Any action shown on a specific item shall not indicate the checking of an assembly of which the item is a component. Contractor is solely responsible for: dimensions which shall be confirmed and correlated at the job site, fabrication processes, techniques of construction, safety precautions, and coordination of its work with that of all other trades and the satisfactory performance of its work.

Reviewed By: *J. J. O'D.* Date: 11/28/11



REV.	DATE	REMARKS	DMN	CHK	APVL	SHOP
△	11/17/11	ADD BTM FLG SPLICE, PL bc	KC	NL		
0						

MATERIAL: M270-SOW (UN) SURFACE PREP. & PAINT: SEE DWG GNI HOLES: 15 1/16" φ SHOP BOLTS: NONE
 DESCRIPTION: GIRDER - 206G2B
CASCO BAY STEEL STRUCTURES, INC.
 1 WALLACE AVE. SOUTH PORTLAND, ME 04106 PHONE (207) 780-6722 FAX (207) 780-6726
 STRUCTURE: I-91 BRIDGE 6S OVER WHITESTONE BROOK & WILLIAMS STREET COUNTY OF MINDHAM
 LOCATION: Town of Brattleboro, VT. JOB NO. 479 DWG NO. 206
 PROJ NO. IM 091-1(SD) CUSTOMER: BECK & BELLUCI