

ONE - GIRDER - 205G1B

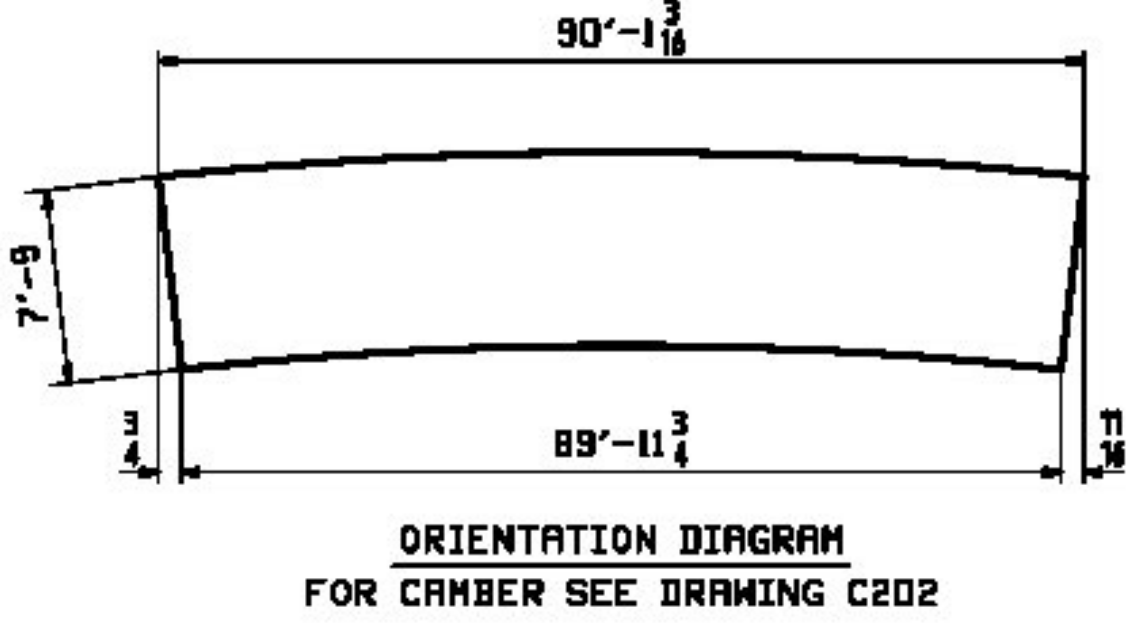
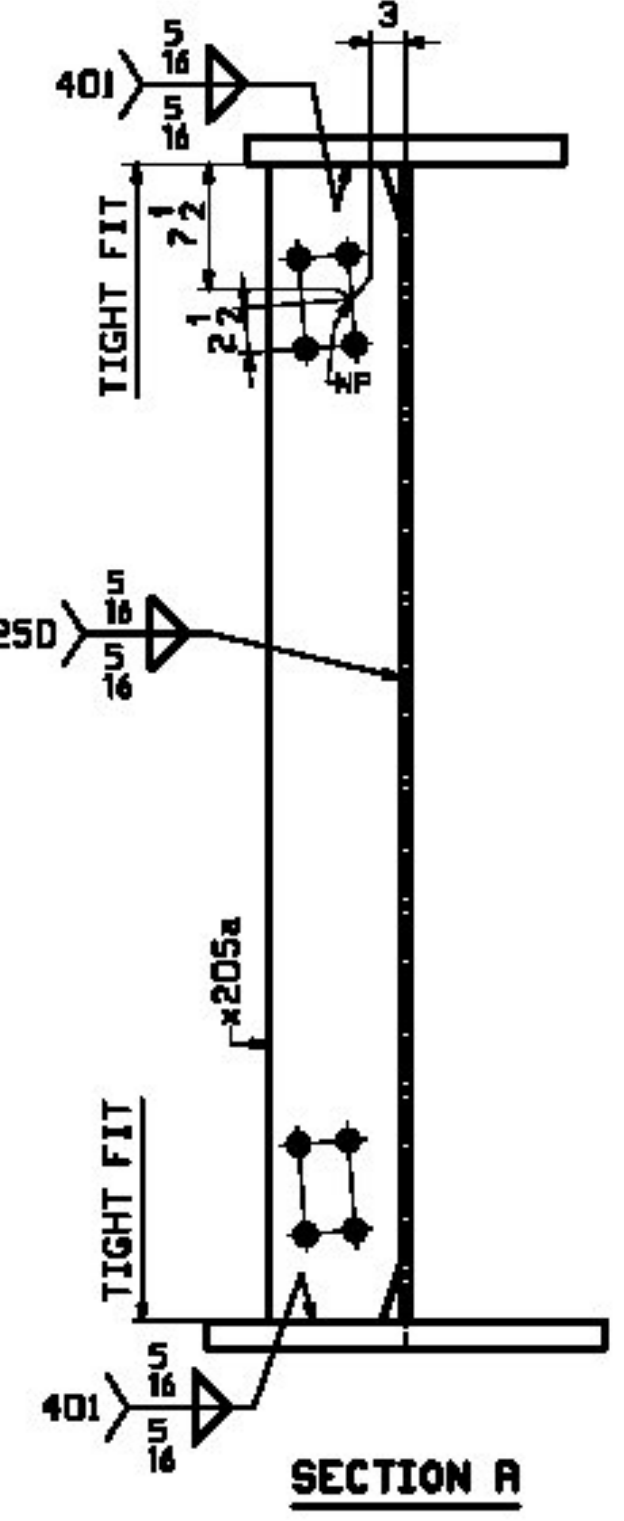
FOR FIELD SPLICE STANDARD DETAILS SEE DRAWINGS X201 & X202.
 FOR GIRDER STANDARD DETAILS SEE DRAWING X205.
 FOR CAMBER & FLANGE DIAGRAMS SEE DRAWING C202.
 FOR GENERAL NOTES SEE DRAWING GNI.
 T2 DENOTES MATERIAL SUBJECT TO CHARPY V-NOTCH TESTING.

BILL OF MATERIAL					JOB NO.	SHOPPING NO.	REV.
					479	205	△
QTY	MARK	MATERIAL	LENGTH	REMARKS	WT	PROCUREMENT	NOTES
NO			FT				
	205G1B	1	GIRDER			41332	
203	L	1	wa	PL 5/8x93	47	5 7/8	M270-SOWT2
203	Q	1	wb	PL 5/8x93	42	2 1/8	M270-SOWT2
203	M	1	tw	PL 2x17 1/2	68	2 1/4	M270-SOW
204	E	1	tb	PL 1 1/2x17 1/2	21	10 5/8	M270-SOW
201	L	1	ba	PL 2x22	26	2 1/4	M270-HPSOWT2
201	M	1	bc	PL 2x22	42	0	M270-HPSOWT2
202	E	1	bb	PL 1 1/2x22	21	8 1/4	M270-HPSOWT2
208	E	6	x205a	PL 1 1/2x7 1/4	7	9	M270-SOW

No Exception Taken
 Make Correction as Noted
 Submit Specified Item
 Revise and Resubmit as Noted
 Rejected

Checking is for general compliance with the design concept of the project and general compliance with the information given in the contract documents only. Any action shown is not an approval and is subject to the requirements of the plans and specifications. Any action shown on a specific item shall not indicate the checking of an assembly of which the item is a component. Contractor is solely responsible for: dimensions which shall be confirmed and correlated at the job site, fabrication processes, techniques of construction, safety precautions, and coordination of its work with that of all other trades and the satisfactory performance of its work.

Reviewed By: *J. J. [Signature]* Date: 11/28/11



REV.	DATE	REMARKS	DMN	CHK	APVL	SHOP
0	11/17/11	ADD BTM FLG SPLICE, PL bc	KC	ML		
MATERIAL:		SURFACE PREP. & PAINT:	HOLES:		SHOP BOLTS:	
M270-SOW (UN)		SEE DWG GNI	15/16" φ		NONE	
DESCRIPTION: GIRDER - 205G1B						
CASCO BAY STEEL STRUCTURES, INC.						
1 WALLACE AVE.			PHONE (207) 780-6722		TENSOR	
SOUTH PORTLAND, ME 04106			FAX: (207) 780-6726		STRUCTURE:	
I-91 BRIDGE 6S OVER WHITESTONE			DRAWN:		DATE:	
BROOK & WILLIAMS STREET			JTB		07/11	
COUNTY OF MINDHAM			CHKD:		DATE:	
			TJB		07/23	
LOCATION: Town of Brattleboro, VT.			JOB NO.		DWG NO.	
PROJ NO. IM 091-1(SD)			479		205	
CUSTOMER: BECK & BELLUCI					REV. △	