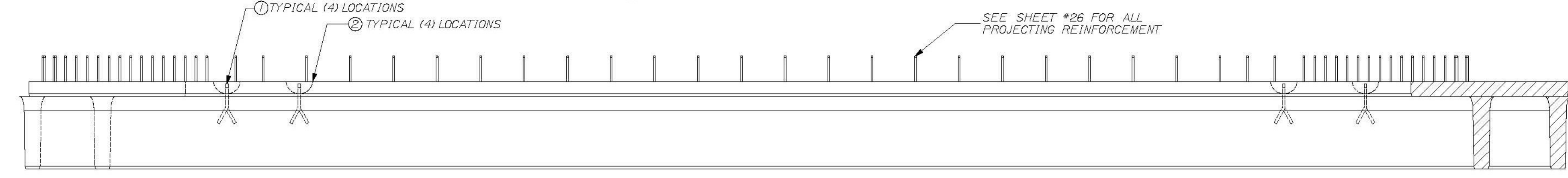
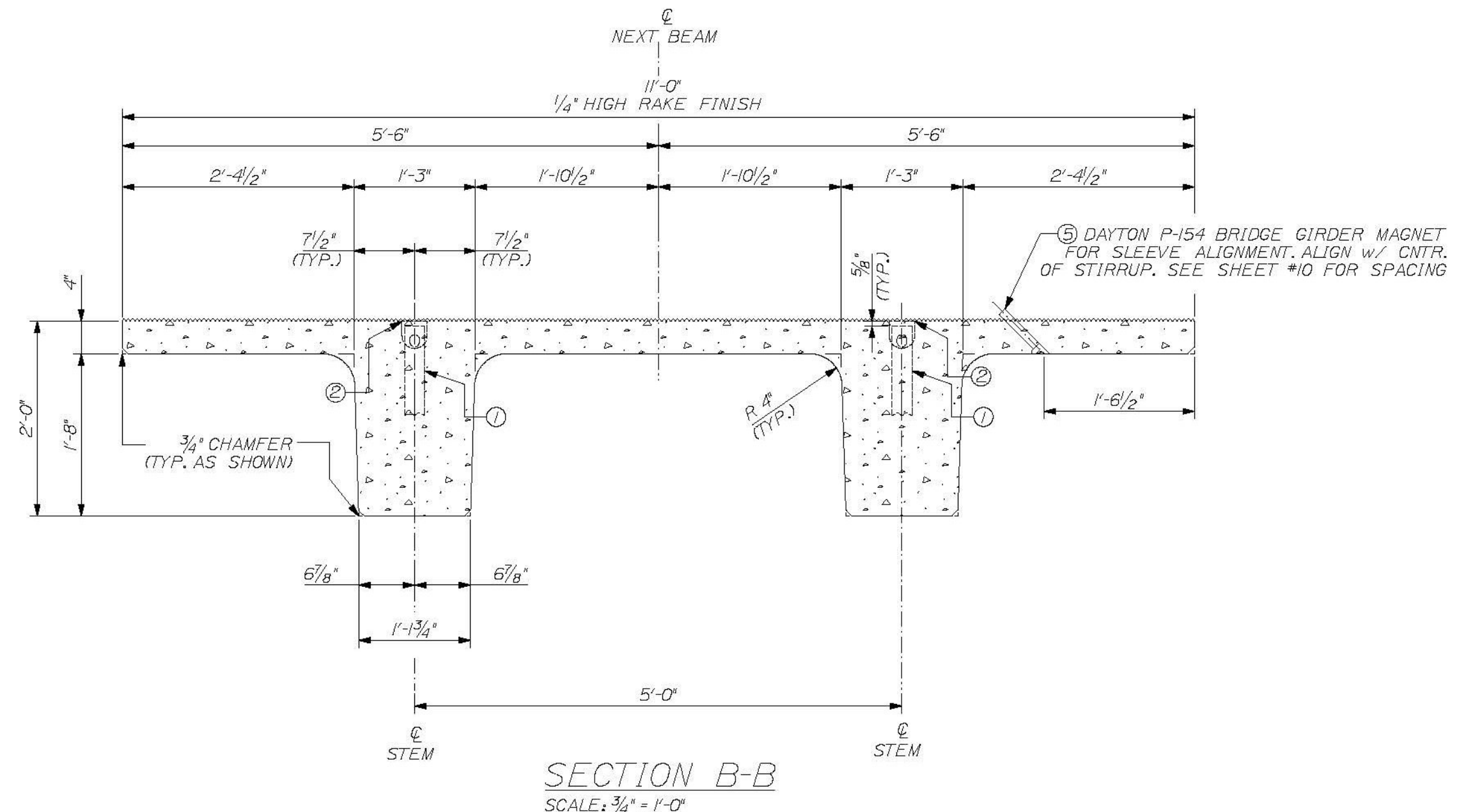


PLAN VIEW ~ BEAM "C4-SB"
SCALE: 1/2" = 1'-0"



VIEW A ~ TYPICAL BOTH SIDES
SCALE: 1/2" = 1'-0"



SECTION B-B
SCALE: 3/4" = 1'-0"

T-Y-LIN INTERNATIONAL

No Exception Taken
 Make Correction as Noted
 Show as Specified Item
 Revise and Resubmit as Noted
 Rejected

Checked for general compliance with the design concept of the project and general compliance with the information given in the contract documents only. Any action shown is not an approval and is subject to the requirements of the plans and specifications. Any notes shown on a specific item shall not indicate the checking of an assembly of which the item is a component. Contractor is solely responsible for dimensions which shall be confirmed and controlled at the job site, fabrication processes, techniques of construction, safety procedures, and coordination of its work with that of all other trades and the satisfactory performance of its work.

Reviewed by: *[Signature]* Date: June 11, 2012

DESIGN NOTES:

CONCRETE f'_c @ TRANSFER = 6000 PSI
 f'_c @ FINAL = 8000 PSI
 CAMBER @ DESTRESS = 1/2 in.
 CAMBER @ ERECTION = 1/2 in.
 FINISH - TOPS OF BEAMS TO RECEIVE RAKE FINISH W/ 1/4" AMPLITUDE
 PATCH RECESS VOIDS FLUSH WITH SURFACE WITH CEMENT MORTAR
 ALL TOLERANCES TO PCI STANDARDS
 (1) "C4-SB" DECK BEAMS REQUIRED
 SEE SHEET #26 FOR REINFORCING
 DUE TO INHERENT VARIABLES, CAMBERS ARE PROVIDED ONLY AS A MEANS OF QUANTIFYING THE CONSISTENCY OF PRODUCTION AND QUALITY CONTROL AND SHOULD NEVER BE CONSIDERED ANY BETTER THAN ESTIMATES.

PRODUCT WEIGHT

PRODUCT	WEIGHT
"C4-SB"	18.9 TONS

BILL OF MATERIALS

REMARKS	#	QTY	TOTAL	DESCRIPTION
SEE SHEET #2	1	4	4	RL-23 SPREAD ANCHOR, 8 TON, (11' LONG), PART# MB79119
	2	4	4	RL-45 REUSABLE RECESS MEMBER, 8TON, PART# MB79121
	5	11	11	DAYTON P-154 BRIDGE GIRDER MAGNET
	6	1	1	9.5 C.Y. CONCRETE MIX

THE PROFESSIONAL ENGINEER'S STAMP WAS PREPARED UNDER THE DIRECT SUPERVISION OF A REGISTERED PROFESSIONAL ENGINEER AND COMPLY WITH THE DESIGN AND DETAILS SHOWN ON THE CONTRACT DRAWING UNLESS REQUESTED OTHERWISE.

CONTRACTOR: BECK & BELLUCCI, INC.
PROJECT: BRATTLEBORO, VERMONT
IM 019-1(60)

STATE OF VERMONT
BRUCE C. DALEY
NO. 87
LICENSED PROFESSIONAL ENGINEER

W.E. DALEY, INC.
PRECAST CONCRETE PRODUCTS
1000 W. 11th St., Brattleboro, VT 05301
TEL: 802-254-4444 FAX: 802-254-4479
DALEY.MARCH 2011 PERMITS & INITIAL SUBMISSIONS
DETAILS ETC.

I-91 BRATTLEBORO, VERMONT
OVER MAPLE ST.

BEAM TYPE "C5-SB"
DIMENSIONAL DETAILS

SHEET NUMBER
25