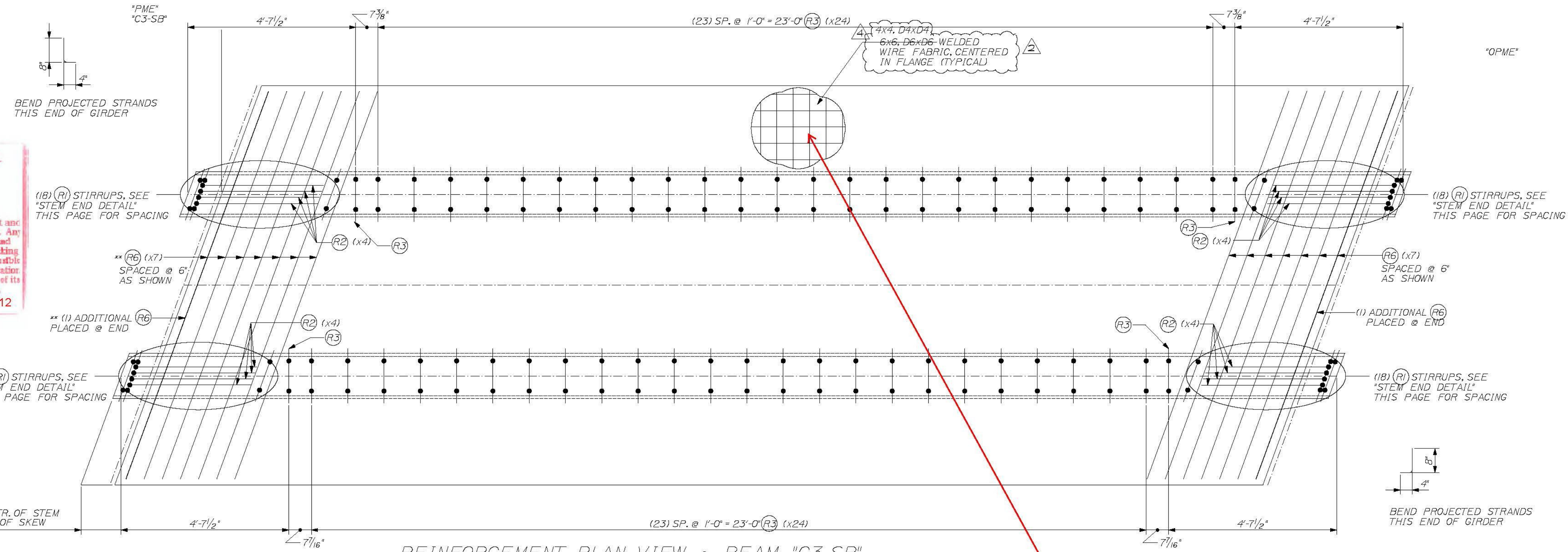


Filename: ... \024\_Beam\_C3-SB\_Reinforcement.dwg Structures Division User: Eric Calderwood Date: 6/11/2012

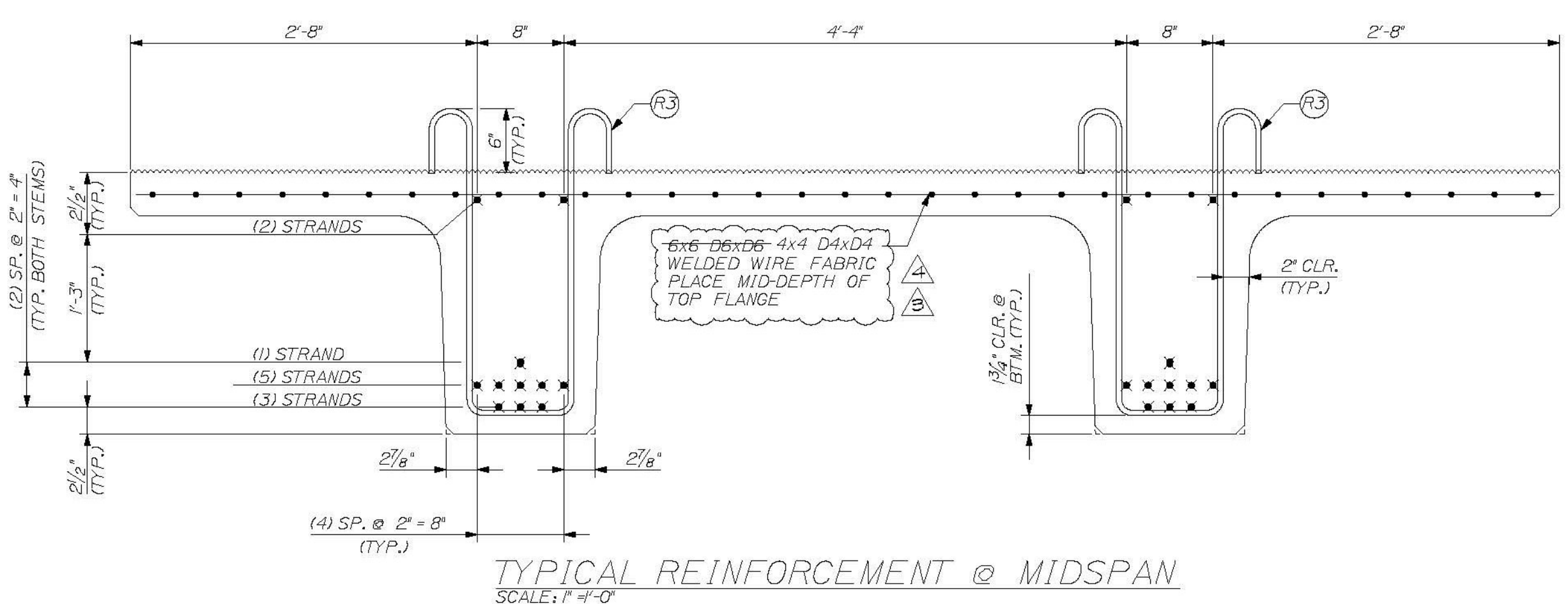
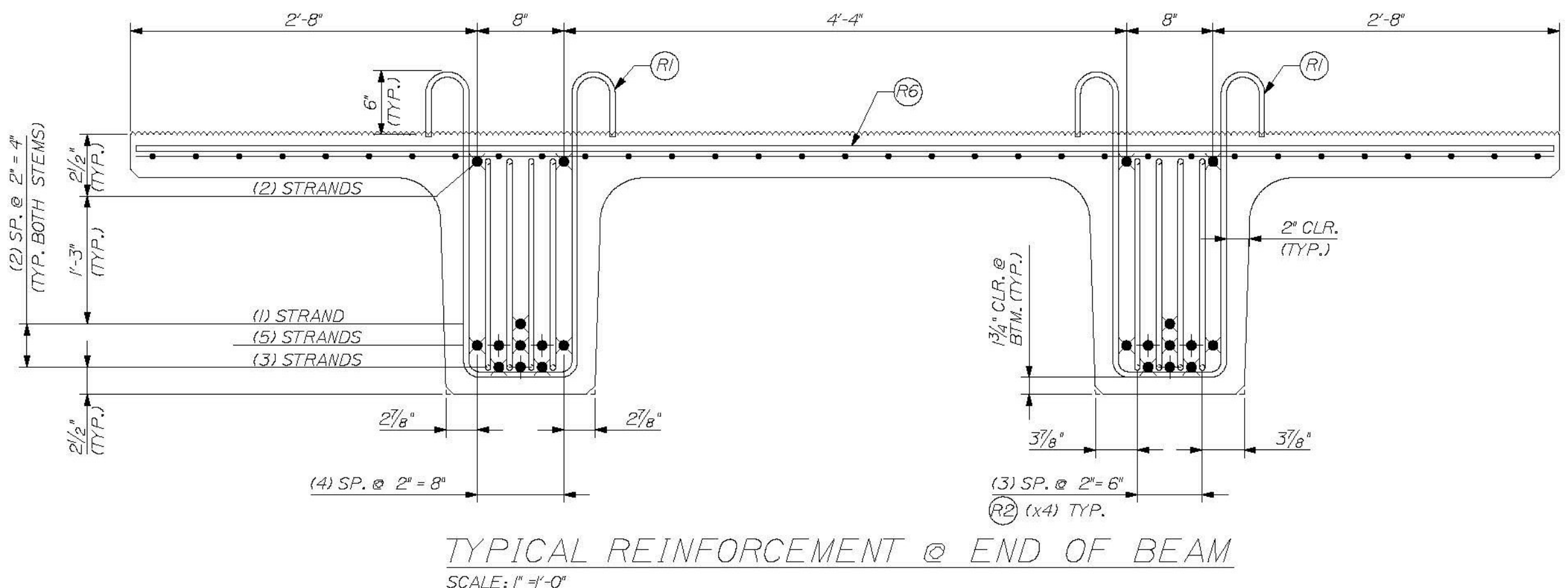
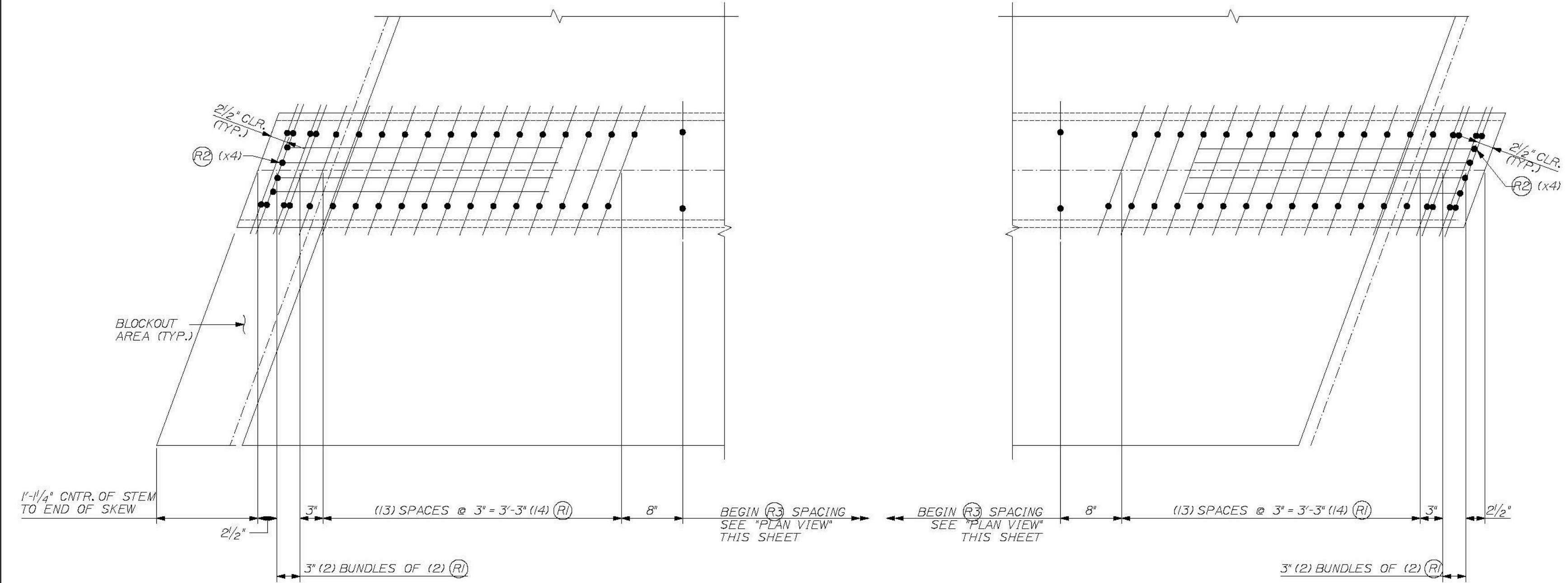
**T-Y-L INTERNATIONAL**  
 No Description taken  
 Make Correction as Noted  
 Submit Specified Item  
 Iterate and Resubmit as Noted  
 Rejected

Checking in for general compliance with the design concept of the project and general compliance with the information given in the contract documents only. Any notes shown in red are approval and is subject to the requirements of the plans and specifications. Any notes shown on a specific item shall not indicate the checking of an assembly of which the item is a component. Contractor is solely responsible for dimensions which shall be confirmed and controlled at the job site, fabrication processes, techniques of construction, safety precautions, and coordination of its work with that of all other trades and the satisfactory performance of its work.

Reviewed by: *[Signature]* Date: June 11, 2012



IF WWF NEEDS TO BE CUT TO PLACE OVER STIRRUPS USE PROCEDURE BELOW:  
 1. FOR CUT TRANSVERSE WIRE, SPLICE A #3 x 45" EPOXY COATED REBAR ORIENTED IN THE SAME DIRECTION OF THE CUT WIRE AND CENTERED.  
 2. FOR CUT LONGITUDINAL WIRE, SPLICE A #3 x 28" EPOXY COATED REBAR ORIENTED IN THE SAME DIRECTION OF THE CUT WIRE AND CENTERED.



STRAND LEGEND

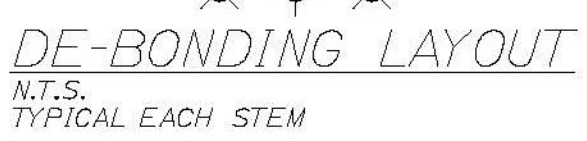
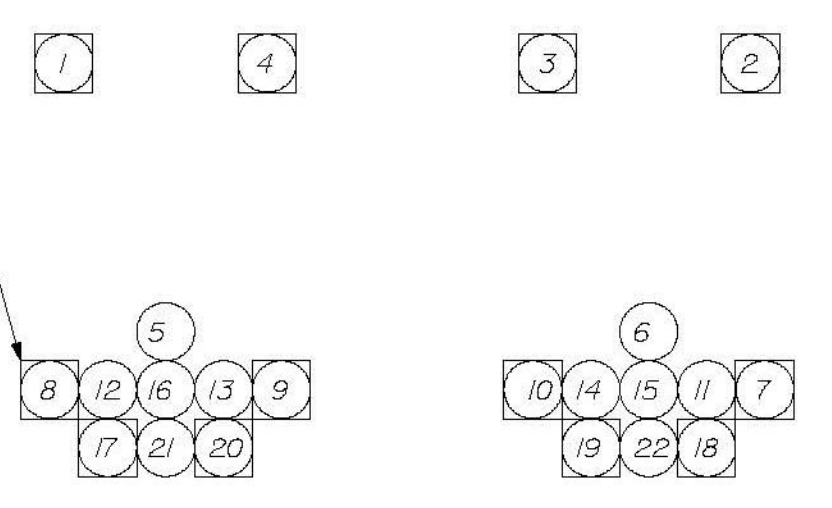
●	0.6" FULLY TENSIONED STRAND
○	0.6" FULLY TENSIONED STRAND (DEBOND 0.50 FEET)
⊗	0.6" FULLY TENSIONED STRAND (DEBOND 6 FEET)
⊕	0.6" FULLY TENSIONED STRAND (DEBOND 12 FEET)

\*EXTEND STRANDS 1,4,8,9,17 & 20 IN THE "LEFT" STEM AND STRANDS 2,3,7,10,18 & 19 IN THE "RIGHT" STEM BY A LENGTH OF 12' BEYOND THE END OF THE BEAM. BEND PER DETAILS NOTED ABOVE.

ALL OTHER STRANDS SHALL EXTEND 4' BEYOND THE END OF THE BEAM.

NOTES:  
 BENT BAR LENGTHS SHOWN REPRESENT BAR LENGTHS BEFORE BENDING.  
 TENSION LOAD = 43.94 KIPS/ STRAND  
 STRAND: 16 #4, 270 KSI LOW RELAXATION, ASTM M203  
 REBAR: AASHTO M51, GRADE 60, EPOXY COATED  
 ALL TOLERANCES TO PCI STANDARDS

(1) "C3-SB" NEXT BEAM BEAM REQUIRED  
 SEE SHEET #23 FOR GEOMETRIC DETAILS  
 SEE SHEET #2 FOR BENT REBAR DETAILS



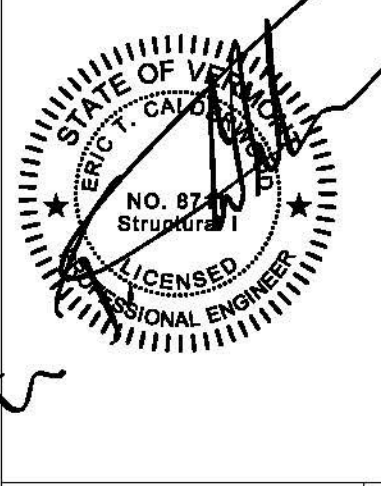
REINFORCING CHART

ITEM	QTY.	TOTAL	SIZE	TYPE	LENGTH
R1	72	72	4	BENT	6'-10"
R2	16	16	4	BENT	8'-3 3/4"
R3	52	52	4	BENT	6'-9 1/2"
R6	16	16	4	STRT.	11'-4 1/2"
---	350 sf.	350 sf.			4x4 D4x04 WELDED WIRE FABRIC

BAR SIZE	WT./BEAM	TOTAL WT.
4	772	772
WWF	300	300

THE PROFESSIONAL ENGINEER'S STAMP WAS PREPARED UNDER THE DIRECT SUPERVISION OF A REGISTERED PROFESSIONAL ENGINEER AND COMPLY WITH THE DESIGN AND DETAILS SHOWN ON THE CONTRACT DRAWING UNLESS REQUESTED OTHERWISE.  
 CONTRACTOR: BECK & BELLUCCI, INC.  
 PROJECT: BRATTLEBORO, VERMONT  
 IM 019-1(60)



W.E. DALEY, INC.  
 PRECAST CONCRETE PRODUCTS  
 1000 W. STATE ST. BRATTLEBORO, VT 05701  
 TEL: 802-442-7178  
 FAX: 802-442-7179  
 WWW.WEDALEY.COM

I-91 BRATTLEBORO, VERMONT  
 OVER MAPLE ST.  
 BEAM TYPE "C3-SB"  
 REINFORCEMENT DETAILS

SHEET NUMBER  
 24